

<b>IH 94: STH 16 TO USH 18 (WAUKESHA COUNTY)</b> <b>NIGHTTIME CLOSURE</b> <b>NO DIVERSION ROUTE (MAX QUEUE METHOD)</b>	<b>OCTOBER</b>
	Analyzed for 2009 Construction Season

**SUMMARY OF TRAFFIC MODEL OUTPUT**

SUNDAY WESTBOUND DIRECTION

TIME OF DAY	FLOWS AND CAPACITY IN VEH/HR						AVERAGE SPEEDS IN MPH			
	MAIN ROUTE		SITE CAPA CITY	FLOW		AV.DEL PER VEH (MINS)	AVERAGE QUEUE (VEH)	MAIN ROUTE		SITE
	DEMAND FLOW	PCT HEAVY		MAIN ROUTE	'DIVER TED'			WITHOUT WORK ZONE	WITH WORK ZONE	
MID-1 AM	757	0.0	3000	757	0	0.35	0	69.8	63.5	49.7
1-2 AM	432	0.0	3000	432	0	0.36	0	70.2	63.8	49.7
2-3 AM	372	0.0	3000	372	0	0.36	0	70.2	63.8	49.7
3-4 AM	240	0.0	3000	240	0	0.36	0	70.2	63.8	49.7
4-5 AM	210	0.0	3000	210	0	0.36	0	70.2	63.8	49.7
5-6 AM	361	0.0	3000	361	0	0.36	0	70.2	63.8	49.7
6-7 AM	598	0.0	3000	598	0	0.36	0	70.0	63.7	49.7
7-8 AM	967	0.0	3000	967	0	0.35	0	69.6	63.4	49.7
8-9 AM	1396	0.0	3000	1396	0	0.34	0	69.0	63.0	49.7
9-10 AM	2047	0.0	OFF	2047	0	0.00	0	68.2	68.2	68.2
10-11 AM	2633	0.0	OFF	2633	0	0.00	0	67.4	67.4	67.4
11AM-NOON	3107	0.0	OFF	3107	0	0.00	0	66.9	66.9	66.9
NOON-1PM	3492	0.0	OFF	3492	0	0.00	0	66.4	66.4	66.4
1-2 PM	3286	0.0	OFF	3286	0	0.00	0	66.6	66.6	66.6
2-3 PM	3224	0.0	OFF	3224	0	0.00	0	66.8	66.8	66.8
3-4 PM	3398	0.0	OFF	3398	0	0.00	0	66.5	66.5	66.5
4-5 PM	3177	0.0	OFF	3177	0	0.00	0	66.8	66.8	66.8
5-6 PM	2833	0.0	OFF	2833	0	0.00	0	67.2	67.2	67.2
6-7 PM	2436	0.0	OFF	2436	0	0.00	0	67.7	67.7	67.7
7-8 PM	1952	0.0	3000	1952	0	0.34	0	68.3	62.6	49.7
8-9 PM	1364	0.0	3000	1364	0	0.34	0	69.1	63.1	49.7
9-10 PM	1058	0.0	3000	1058	0	0.35	0	69.4	63.3	49.7
10-11 PM	854	0.0	3000	854	0	0.35	0	69.7	63.5	49.7
11PM-MID	552	0.0	3000	552	0	0.36	0	70.0	63.7	49.7

"OFF" INDICATES NO ROAD WORK (ALL LANES OPEN TO TRAFFIC)

*----- SITE BREAKDOWN DELAYS -----*	
BREAKDOWN DURATION (MINS)	0
RANGE OF QUEUE DELAY - MIN (VEH-H) MAX	0.0
AV BREAKDOWNS PER DAY	0.00
AV QUEUE DELAY/DAY (VEH-H)	0.0
AV TOTAL DELAY/DAY (VEH-H)	0.0

*----- SITE ACCIDENT DELAYS -----*	
BREAKDOWN DURATION (MINS)	0
RANGE OF QUEUE DELAY - MIN (VEH-H) MAX	0
AV BREAKDOWNS PER DAY	0
AV QUEUE DELAY/DAY (VEH-H)	0
AV TOTAL DELAY/DAY (VEH-H)	0

AVERAGE ACCIDENT NUMBERS (PIA/DAY)	
MAIN ROUTE WITHOUT WORKS	0.0272
MAIN ROUTE WITH WORKS	0.0265
'DIVERSION'	0.0000
PIA: Personal Injury Accidents	
IMPACTS ON ROAD USERS	
ROAD USER COSTS PER DAY	\$874
CONGESTED HOURS PER DAY*	0

\*Delays Exceeding User-Specified Maximum

**IH 94: STH 16 TO USH 18 (WAUKESHA COUNTY)  
NIGHTTIME CLOSURE  
NO DIVERSION ROUTE (MAX QUEUE METHOD)**

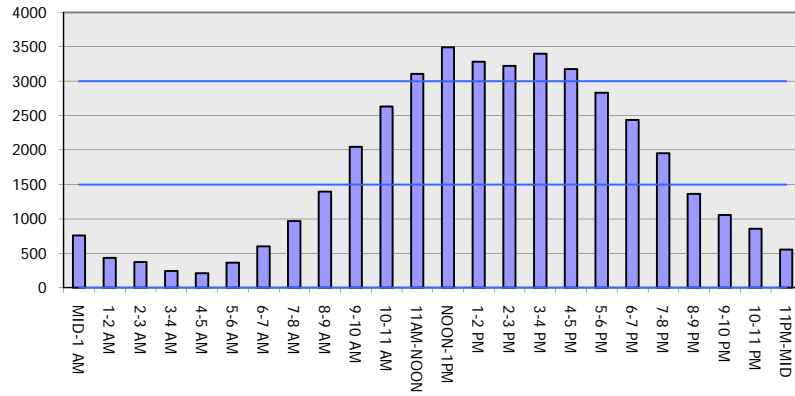
**OCTOBER**

Analyzed for 2009  
Construction Season

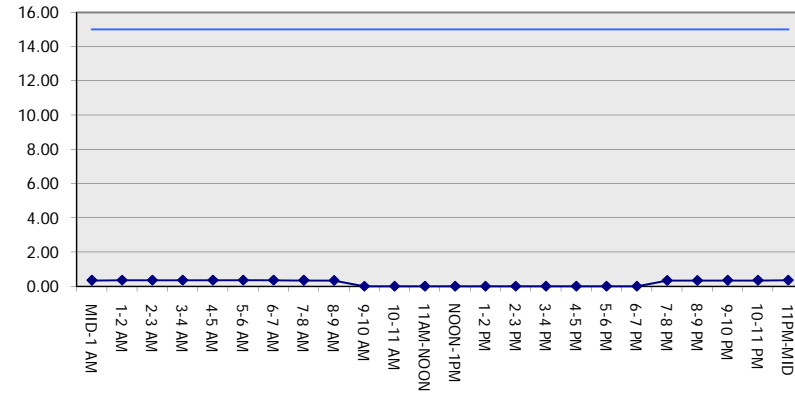
**GRAPHICAL REPRESENTATION OF TRAFFIC MODEL INPUT AND OUTPUT**

**SUNDAY WESTBOUND DIRECTION**

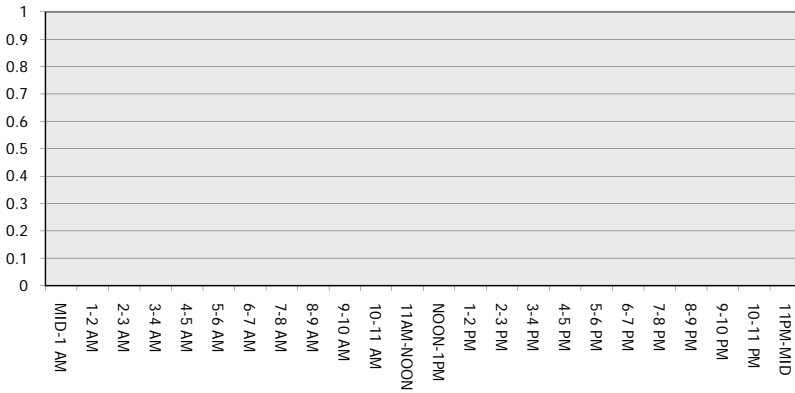
**Main Route - Traffic Demand (Vehicles Per Hour)**



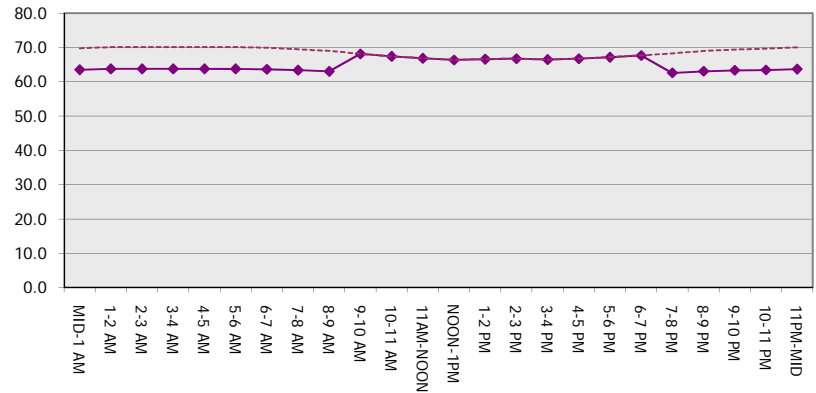
**Main Route Average Delay Per Vehicle (Minutes)**



**Main Route - Average Queue Length (Vehicles)**



**Main Route - Average Speed (MPH)**



<b>IH 94: STH 16 TO USH 18 (WAUKESHA COUNTY)</b> <b>NIGHTTIME CLOSURE</b> <b>NO DIVERSION ROUTE (MAX QUEUE METHOD)</b>	<b>OCTOBER</b>
	Analyzed for 2009 Construction Season

**SUMMARY OF TRAFFIC MODEL OUTPUT**

SUNDAY EASTBOUND DIRECTION

TIME OF DAY	FLOWS AND CAPACITY IN VEH/HR						AVERAGE SPEEDS IN MPH			
	MAIN ROUTE		SITE CAPA CITY	FLOW		AV.DEL PER VEH (MINS)	AVERAGE QUEUE (VEH)	MAIN ROUTE		SITE
	DEMAND FLOW	PCT HEAVY		MAIN ROUTE	'DIVER TED'			WITHOUT WORK ZONE	WITH WORK ZONE	
MID-1 AM	709	0.0	3000	709	0	0.36	0	69.9	63.6	49.7
1-2 AM	397	0.0	3000	397	0	0.36	0	70.2	63.8	49.7
2-3 AM	286	0.0	3000	286	0	0.36	0	70.2	63.8	49.7
3-4 AM	229	0.0	3000	229	0	0.36	0	70.2	63.8	49.7
4-5 AM	257	0.0	3000	257	0	0.36	0	70.2	63.8	49.7
5-6 AM	411	0.0	3000	411	0	0.36	0	70.2	63.8	49.7
6-7 AM	657	0.0	3000	657	0	0.36	0	69.9	63.7	49.7
7-8 AM	983	0.0	3000	983	0	0.35	0	69.5	63.4	49.7
8-9 AM	1437	0.0	3000	1437	0	0.34	0	68.9	63.0	49.7
9-10 AM	2234	0.0	OFF	2234	0	0.00	0	67.9	67.9	67.9
10-11 AM	2973	0.0	OFF	2973	0	0.00	0	67.1	67.1	67.1
11AM-NOON	3590	0.0	OFF	3590	0	0.00	0	66.3	66.3	66.3
NOON-1PM	3815	0.0	OFF	3815	0	0.00	0	64.8	64.8	64.8
1-2 PM	3810	0.0	OFF	3810	0	0.00	0	64.8	64.8	64.8
2-3 PM	3799	0.0	OFF	3799	0	0.00	0	64.9	64.9	64.9
3-4 PM	3917	0.0	OFF	3917	0	0.00	0	64.1	64.1	64.1
4-5 PM	3848	0.0	OFF	3848	0	0.00	0	64.6	64.6	64.6
5-6 PM	3551	0.0	OFF	3551	0	0.00	0	66.3	66.3	66.3
6-7 PM	3206	0.0	OFF	3206	0	0.00	0	66.8	66.8	66.8
7-8 PM	2347	0.0	3000	2347	0	0.33	0	67.8	62.3	49.7
8-9 PM	1797	0.0	3000	1797	0	0.34	0	68.5	62.7	49.7
9-10 PM	1295	0.0	3000	1295	0	0.35	0	69.1	63.2	49.7
10-11 PM	879	0.0	3000	879	0	0.35	0	69.6	63.5	49.7
11PM-MID	491	0.0	3000	491	0	0.36	0	70.1	63.8	49.7

"OFF" INDICATES NO ROAD WORK (ALL LANES OPEN TO TRAFFIC)

*----- SITE BREAKDOWN DELAYS -----*	
BREAKDOWN DURATION (MINS)	0
RANGE OF QUEUE DELAY - MIN (VEH-H) MAX	0.0
AV BREAKDOWNS PER DAY	0.00
AV QUEUE DELAY/DAY (VEH-H)	0.0
AV TOTAL DELAY/DAY (VEH-H)	0.0

*----- SITE ACCIDENT DELAYS -----*	
BREAKDOWN DURATION (MINS)	0
RANGE OF QUEUE DELAY - MIN (VEH-H) MAX	0
AV BREAKDOWNS PER DAY	0
AV QUEUE DELAY/DAY (VEH-H)	0
AV TOTAL DELAY/DAY (VEH-H)	0

AVERAGE ACCIDENT NUMBERS (PIA/DAY)	
MAIN ROUTE WITHOUT WORKS	0.0314
MAIN ROUTE WITH WORKS	0.0306
'DIVERSION'	0.0000

PIA: Personal Injury Accidents

ECONOMIC IMPACT ON ROAD USERS	
ROAD USER COSTS PER DAY	\$952
CONGESTED HOURS PER DAY*	0

\*Delays Exceeding User-Specified Maximum

**IH 94: STH 16 TO USH 18 (WAUKESHA COUNTY)  
NIGHTTIME CLOSURE  
NO DIVERSION ROUTE (MAX QUEUE METHOD)**

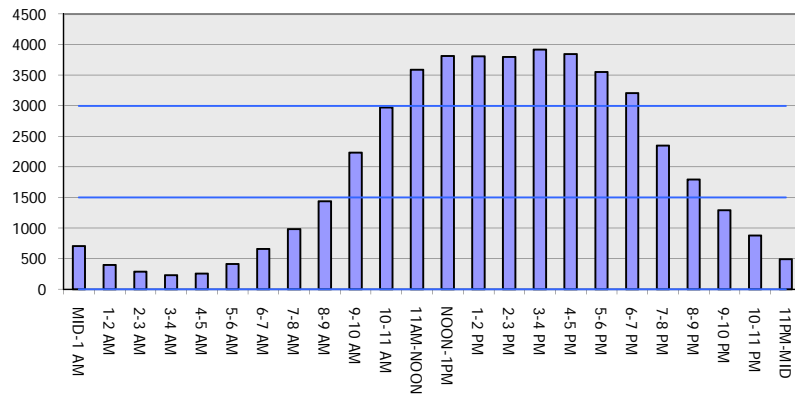
**OCTOBER**

Analyzed for 2009  
Construction Season

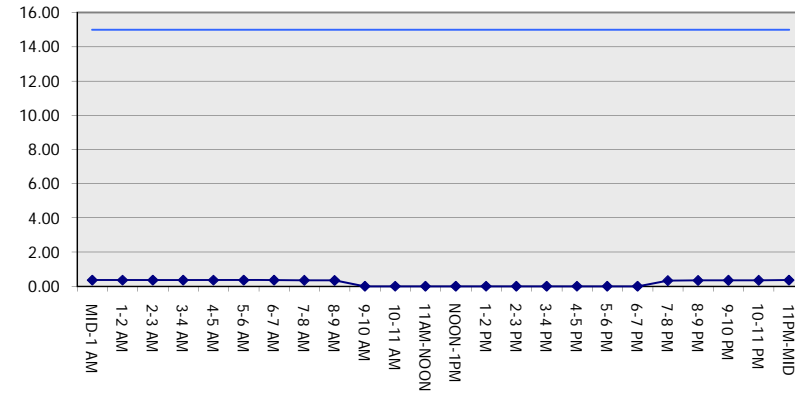
**GRAPHICAL REPRESENTATION OF TRAFFIC MODEL INPUT AND OUTPUT**

**SUNDAY EASTBOUND DIRECTION**

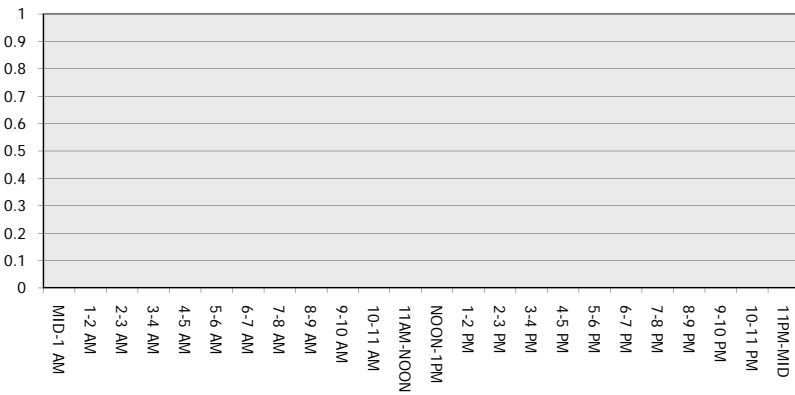
**Main Route - Traffic Demand (Vehicles Per Hour)**



**Main Route Average Delay Per Vehicle (Minutes)**



**Main Route - Average Queue Length (Vehicles)**



**Main Route - Average Speed (MPH)**

