

<b>IH 94: STH 16 TO USH 18 (WAUKESHA COUNTY)</b> <b>NIGHTTIME CLOSURE</b> <b>NO DIVERSION ROUTE (MAX QUEUE METHOD)</b>	<b>OCTOBER</b>
	Analyzed for 2009 Construction Season

**SUMMARY OF TRAFFIC MODEL OUTPUT**

MON-THUR      WESTBOUND DIRECTION

TIME OF DAY	FLOWS AND CAPACITY IN VEH/HR						AVERAGE SPEEDS IN MPH			
	MAIN ROUTE		SITE CAPA CITY	FLOW		AV.DEL PER VEH (MINS)	AVERAGE QUEUE (VEH)	MAIN ROUTE		SITE
	DEMAND FLOW	PCT HEAVY		MAIN ROUTE	'DIVER TED'			WITHOUT WORK ZONE	WITH WORK ZONE	
MID-1 AM	373	0.0	3000	373	0	0.36	0	70.2	63.8	49.7
1-2 AM	241	0.0	3000	241	0	0.36	0	70.2	63.8	49.7
2-3 AM	205	0.0	3000	205	0	0.36	0	70.2	63.8	49.7
3-4 AM	265	0.0	3000	265	0	0.36	0	70.2	63.8	49.7
4-5 AM	509	0.0	3000	509	0	0.36	0	70.1	63.7	49.7
5-6 AM	1402	0.0	OFF	1402	0	0.00	0	69.0	69.0	69.0
6-7 AM	3041	0.0	OFF	3041	0	0.00	0	66.9	66.9	66.9
7-8 AM	4218	0.0	OFF	4218	0	0.00	0	62.0	62.0	62.0
8-9 AM	3640	0.0	OFF	3640	0	0.00	0	66.0	66.0	66.0
9-10 AM	2789	0.0	OFF	2789	0	0.00	0	67.3	67.3	67.3
10-11 AM	2700	0.0	OFF	2700	0	0.00	0	67.4	67.4	67.4
11AM-NOON	3026	0.0	OFF	3026	0	0.00	0	66.9	66.9	66.9
NOON-1PM	3294	0.0	OFF	3294	0	0.00	0	66.6	66.6	66.6
1-2 PM	3411	0.0	OFF	3411	0	0.00	0	66.5	66.5	66.5
2-3 PM	4108	0.0	OFF	4108	0	0.00	0	62.8	62.8	62.8
3-4 PM	5144	0.0	OFF	5144	0	0.00	0	55.7	55.7	55.7
4-5 PM	5595	0.0	OFF	5595	0	0.00	0	52.7	52.7	52.7
5-6 PM	5491	0.0	OFF	5491	0	0.00	0	53.3	53.3	53.3
6-7 PM	3734	0.0	OFF	3734	0	0.00	0	65.3	65.3	65.3
7-8 PM	2547	0.0	3000	2547	0	0.43	0	67.6	60.5	45.7
8-9 PM	2168	0.0	3000	2168	0	0.33	0	68.1	62.4	49.7
9-10 PM	1727	0.0	3000	1727	0	0.34	0	68.6	62.8	49.7
10-11 PM	1098	0.0	3000	1098	0	0.35	0	69.4	63.3	49.7
11PM-MID	671	0.0	3000	671	0	0.36	0	69.9	63.6	49.7

"OFF" INDICATES NO ROAD WORK (ALL LANES OPEN TO TRAFFIC)

*----- SITE BREAKDOWN DELAYS -----*	
BREAKDOWN DURATION (MINS)	0
RANGE OF QUEUE DELAY - MIN (VEH-H) MAX	0.0
AV BREAKDOWNS PER DAY	0.00
AV QUEUE DELAY/DAY (VEH-H)	0.0
AV TOTAL DELAY/DAY (VEH-H)	0.0

*----- SITE ACCIDENT DELAYS -----*	
BREAKDOWN DURATION (MINS)	0
RANGE OF QUEUE DELAY - MIN (VEH-H) MAX	0
AV BREAKDOWNS PER DAY	0
AV QUEUE DELAY/DAY (VEH-H)	0
AV TOTAL DELAY/DAY (VEH-H)	0

AVERAGE ACCIDENT NUMBERS (PIA/DAY)	
MAIN ROUTE WITHOUT WORKS	0.0410
MAIN ROUTE WITH WORKS	0.0404
'DIVERSION'	0.0000
PIA: Personal Injury Accidents	
IMPACTS ON ROAD USERS	
ROAD USER COSTS PER DAY	\$22,697
CONGESTED HOURS PER DAY*	0

\*Delays Exceeding User-Specified Maximum

**IH 94: STH 16 TO USH 18 (WAUKESHA COUNTY)  
NIGHTTIME CLOSURE  
NO DIVERSION ROUTE (MAX QUEUE METHOD)**

**OCTOBER**

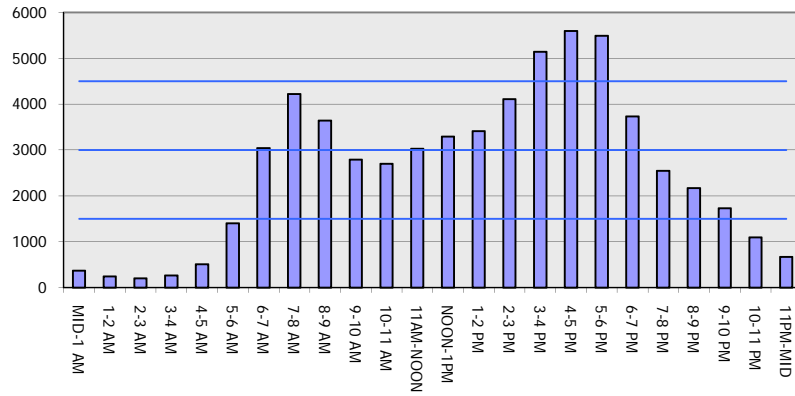
Analyzed for 2009  
Construction Season

**GRAPHICAL REPRESENTATION OF TRAFFIC MODEL INPUT AND OUTPUT**

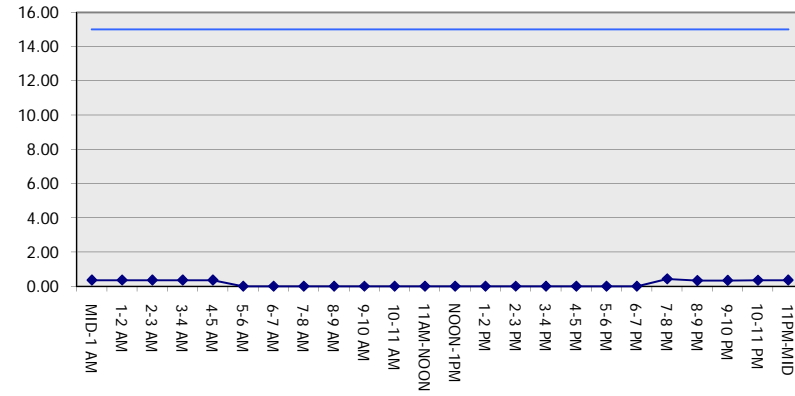
**MON-THUR**

**WESTBOUND DIRECTION**

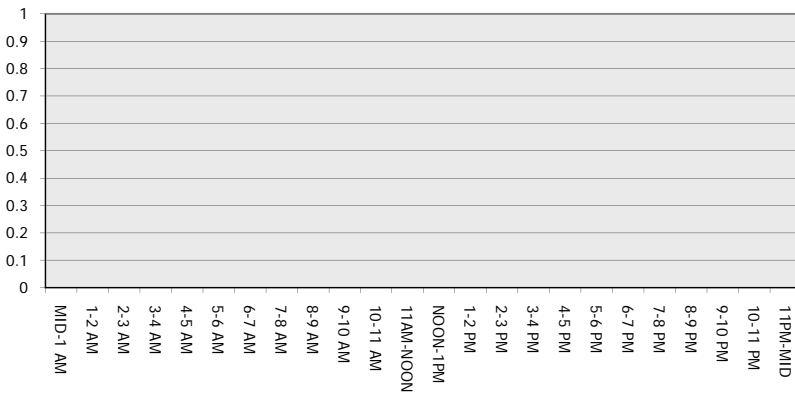
**Main Route - Traffic Demand (Vehicles Per Hour)**



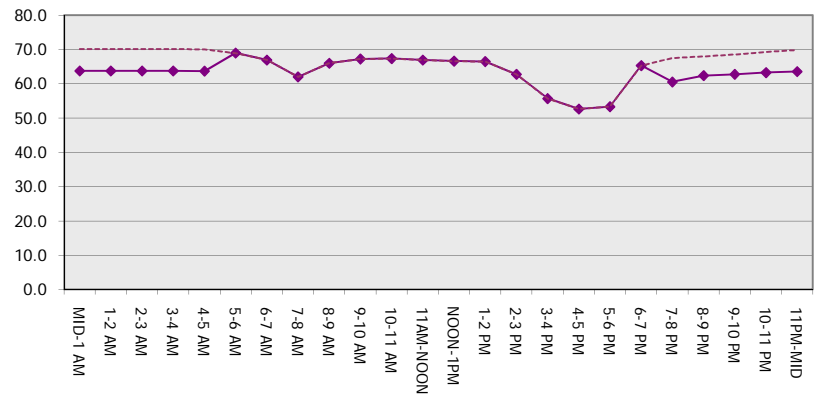
**Main Route Average Delay Per Vehicle (Minutes)**



**Main Route - Average Queue Length (Vehicles)**



**Main Route - Average Speed (MPH)**



<b>IH 94: STH 16 TO USH 18 (WAUKESHA COUNTY)</b> <b>NIGHTTIME CLOSURE</b> <b>NO DIVERSION ROUTE (MAX QUEUE METHOD)</b>	<b>OCTOBER</b>
	Analyzed for 2009 Construction Season

**SUMMARY OF TRAFFIC MODEL OUTPUT**

MON-THUR                      EASTBOUND DIRECTION

TIME OF DAY	FLOWS AND CAPACITY IN VEH/HR						AVERAGE SPEEDS IN MPH			
	MAIN ROUTE		SITE CAPA CITY	FLOW		AV.DEL PER VEH (MINS)	AVERAGE QUEUE (VEH)	MAIN ROUTE		SITE
	DEMAND FLOW	PCT HEAVY		MAIN ROUTE	'DIVER TED'			WITHOUT WORK ZONE	WITH WORK ZONE	
MID-1 AM	275	0.0	3000	275	0	0.36	0	70.2	63.8	49.7
1-2 AM	204	0.0	3000	204	0	0.36	0	70.2	63.8	49.7
2-3 AM	200	0.0	3000	200	0	0.36	0	70.2	63.8	49.7
3-4 AM	307	0.0	3000	307	0	0.36	0	70.2	63.8	49.7
4-5 AM	776	0.0	3000	776	0	0.35	0	69.7	63.5	49.7
5-6 AM	2612	0.0	OFF	2612	0	0.00	0	67.5	67.5	67.5
6-7 AM	5532	0.0	OFF	5532	0	0.00	0	53.0	53.0	53.0
7-8 AM	5533	0.0	OFF	5533	0	0.00	0	53.0	53.0	53.0
8-9 AM	4628	0.0	OFF	4628	0	0.00	0	59.2	59.2	59.2
9-10 AM	3400	0.0	OFF	3400	0	0.00	0	66.5	66.5	66.5
10-11 AM	3105	0.0	OFF	3105	0	0.00	0	66.9	66.9	66.9
11AM-NOON	3250	0.0	OFF	3250	0	0.00	0	66.7	66.7	66.7
NOON-1PM	3253	0.0	OFF	3253	0	0.00	0	66.7	66.7	66.7
1-2 PM	3274	0.0	OFF	3274	0	0.00	0	66.7	66.7	66.7
2-3 PM	3630	0.0	OFF	3630	0	0.00	0	66.1	66.1	66.1
3-4 PM	4323	0.0	OFF	4323	0	0.00	0	61.3	61.3	61.3
4-5 PM	4609	0.0	OFF	4609	0	0.00	0	59.4	59.4	59.4
5-6 PM	4105	0.0	OFF	4105	0	0.00	0	62.8	62.8	62.8
6-7 PM	2916	0.0	OFF	2916	0	0.00	0	67.1	67.1	67.1
7-8 PM	1972	0.0	3000	1972	0	0.34	0	68.3	62.6	49.7
8-9 PM	1710	0.0	3000	1710	0	0.34	0	68.6	62.8	49.7
9-10 PM	1324	0.0	3000	1324	0	0.35	0	69.1	63.1	49.7
10-11 PM	882	0.0	3000	882	0	0.35	0	69.6	63.5	49.7
11PM-MID	518	0.0	3000	518	0	0.36	0	70.1	63.7	49.7

"OFF" INDICATES NO ROAD WORK (ALL LANES OPEN TO TRAFFIC)

*----- SITE BREAKDOWN DELAYS -----*	
BREAKDOWN DURATION (MINS)	0
RANGE OF QUEUE DELAY - MIN (VEH-H) MAX	0.0
AV BREAKDOWNS PER DAY	0.00
AV QUEUE DELAY/DAY (VEH-H)	0.0
AV TOTAL DELAY/DAY (VEH-H)	0.0

*----- SITE ACCIDENT DELAYS -----*	
BREAKDOWN DURATION (MINS)	0
RANGE OF QUEUE DELAY - MIN (VEH-H) MAX	0
AV BREAKDOWNS PER DAY	0
AV QUEUE DELAY/DAY (VEH-H)	0
AV TOTAL DELAY/DAY (VEH-H)	0

AVERAGE ACCIDENT NUMBERS (PIA/DAY)	
MAIN ROUTE WITHOUT WORKS	0.0417
MAIN ROUTE WITH WORKS	0.0411
'DIVERSION'	0.0000

PIA: Personal Injury Accidents

ECONOMIC IMPACT ON ROAD USERS	
ROAD USER COSTS PER DAY	\$17,901
CONGESTED HOURS PER DAY*	0

\*Delays Exceeding User-Specified Maximum

**IH 94: STH 16 TO USH 18 (WAUKESHA COUNTY)  
NIGHTTIME CLOSURE  
NO DIVERSION ROUTE (MAX QUEUE METHOD)**

**OCTOBER**

Analyzed for 2009  
Construction Season

**GRAPHICAL REPRESENTATION OF TRAFFIC MODEL INPUT AND OUTPUT  
MON-THUR EASTBOUND DIRECTION**

