

<b>IH 94: STH 16 TO USH 18 (WAUKESHA COUNTY)</b> <b>NIGHTTIME CLOSURE</b> <b>NO DIVERSION ROUTE (MAX QUEUE METHOD)</b>	<b>OCTOBER</b>
	Analyzed for 2009 Construction Season

**SUMMARY OF TRAFFIC MODEL OUTPUT**

FRIDAY WESTBOUND DIRECTION

TIME OF DAY	FLOWS AND CAPACITY IN VEH/HR						AVERAGE SPEEDS IN MPH			
	MAIN ROUTE		SITE CAPA CITY	FLOW		AV.DEL PER VEH (MINS)	AVERAGE QUEUE (VEH)	MAIN ROUTE		SITE
	DEMAND FLOW	PCT HEAVY		MAIN ROUTE	'DIVER TED'			WITHOUT WORK ZONE	WITH WORK ZONE	
MID-1 AM	554	0.0	3000	554	0	0.36	0	70.0	63.7	49.7
1-2 AM	344	0.0	3000	344	0	0.36	0	70.2	63.8	49.7
2-3 AM	285	0.0	3000	285	0	0.36	0	70.2	63.8	49.7
3-4 AM	286	0.0	3000	286	0	0.36	0	70.2	63.8	49.7
4-5 AM	492	0.0	3000	492	0	0.36	0	70.1	63.8	49.7
5-6 AM	1171	0.0	OFF	1171	0	0.00	0	69.3	69.3	69.3
6-7 AM	2688	0.0	OFF	2688	0	0.00	0	67.4	67.4	67.4
7-8 AM	4058	0.0	OFF	4058	0	0.00	0	63.2	63.2	63.2
8-9 AM	3844	0.0	OFF	3844	0	0.00	0	64.6	64.6	64.6
9-10 AM	3138	0.0	OFF	3138	0	0.00	0	66.8	66.8	66.8
10-11 AM	3319	0.0	OFF	3319	0	0.00	0	66.6	66.6	66.6
11AM-NOON	3717	0.0	OFF	3717	0	0.00	0	65.5	65.5	65.5
NOON-1PM	4123	0.0	OFF	4123	0	0.00	0	62.7	62.7	62.7
1-2 PM	4411	0.0	OFF	4411	0	0.00	0	60.7	60.7	60.7
2-3 PM	4929	0.0	OFF	4929	0	0.00	0	57.2	57.2	57.2
3-4 PM	5815	0.0	OFF	5815	0	0.00	0	51.1	51.1	51.1
4-5 PM	6103	0.0	OFF	6103	0	0.00	0	49.2	49.2	49.2
5-6 PM	5945	0.0	OFF	5945	0	0.00	0	50.2	50.2	50.2
6-7 PM	4554	0.0	OFF	4554	0	0.00	0	59.7	59.7	59.7
7-8 PM	2991	0.0	2999	2991	0	1.80	63	67.0	45.3	38.6
8-9 PM	2387	0.0	3000	2387	0	0.33	0	67.8	62.3	49.7
9-10 PM	2256	0.0	3000	2256	0	0.33	0	67.9	62.3	49.7
10-11 PM	1739	0.0	3000	1739	0	0.34	0	68.6	62.8	49.7
11PM-MID	1187	0.0	3000	1187	0	0.35	0	69.2	63.2	49.7

"OFF" INDICATES NO ROAD WORK (ALL LANES OPEN TO TRAFFIC)

*----- SITE BREAKDOWN DELAYS -----*	
BREAKDOWN DURATION (MINS)	0
RANGE OF QUEUE DELAY - MIN (VEH-H) MAX	0.0
AV BREAKDOWNS PER DAY	0.00
AV QUEUE DELAY/DAY (VEH-H)	0.0
AV TOTAL DELAY/DAY (VEH-H)	0.0

*----- SITE ACCIDENT DELAYS -----*	
BREAKDOWN DURATION (MINS)	0
RANGE OF QUEUE DELAY - MIN (VEH-H) MAX	0
AV BREAKDOWNS PER DAY	0
AV QUEUE DELAY/DAY (VEH-H)	0
AV TOTAL DELAY/DAY (VEH-H)	0

AVERAGE ACCIDENT NUMBERS (PIA/DAY)	
MAIN ROUTE WITHOUT WORKS	0.0470
MAIN ROUTE WITH WORKS	0.0462
'DIVERSION'	0.0000
PIA: Personal Injury Accidents	
IMPACTS ON ROAD USERS	
ROAD USER COSTS PER DAY	\$1,820
CONGESTED HOURS PER DAY*	0

\*Delays Exceeding User-Specified Maximum

**IH 94: STH 16 TO USH 18 (WAUKESHA COUNTY)**  
**NIGHTTIME CLOSURE**  
**NO DIVERSION ROUTE (MAX QUEUE METHOD)**

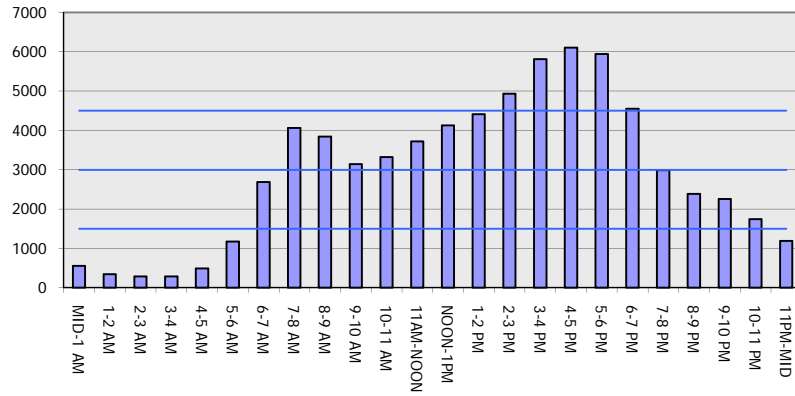
**OCTOBER**

Analyzed for 2009  
 Construction Season

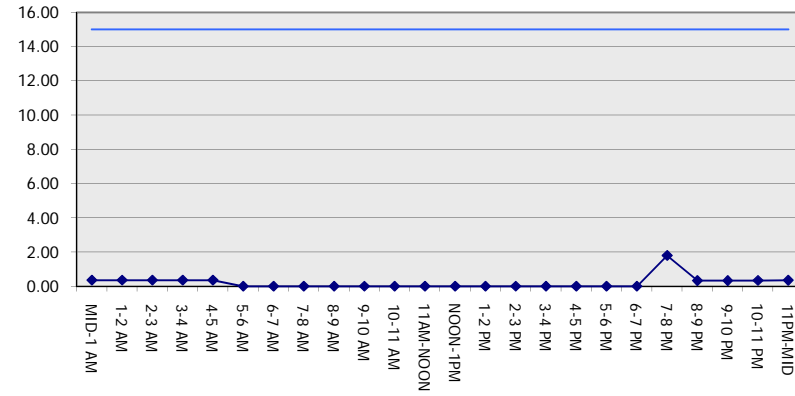
**GRAPHICAL REPRESENTATION OF TRAFFIC MODEL INPUT AND OUTPUT**

**FRIDAY WESTBOUND DIRECTION**

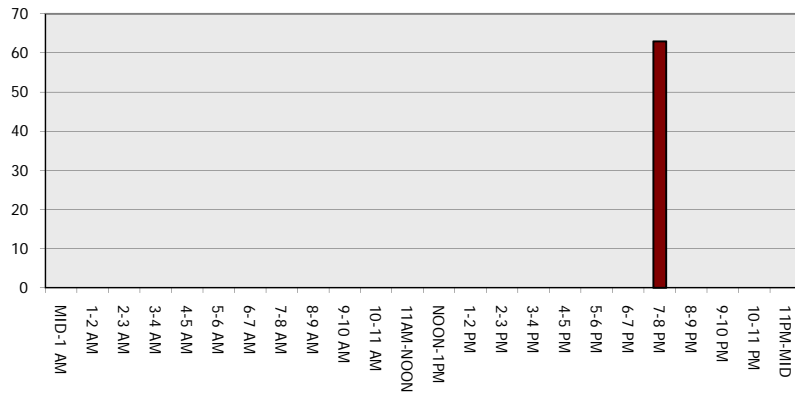
**Main Route - Traffic Demand (Vehicles Per Hour)**



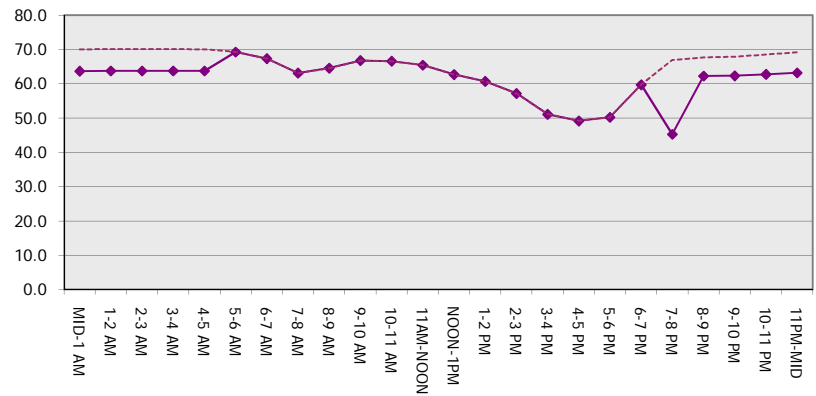
**Main Route Average Delay Per Vehicle (Minutes)**



**Main Route - Average Queue Length (Vehicles)**



**Main Route - Average Speed (MPH)**



<b>IH 94: STH 16 TO USH 18 (WAUKESHA COUNTY)</b> <b>NIGHTTIME CLOSURE</b> <b>NO DIVERSION ROUTE (MAX QUEUE METHOD)</b>	<b>OCTOBER</b>
	Analyzed for 2009 Construction Season

**SUMMARY OF TRAFFIC MODEL OUTPUT**

FRIDAY EASTBOUND DIRECTION

TIME OF DAY	FLOWS AND CAPACITY IN VEH/HR							AVERAGE SPEEDS IN MPH		
	MAIN ROUTE		SITE CAPA CITY	FLOW		AV.DEL PER VEH (MINS)	AVERAGE QUEUE (VEH)	MAIN ROUTE		SITE
	DEMAND FLOW	PCT HEAVY		MAIN ROUTE	'DIVER TED'			WITHOUT WORK ZONE	WITH WORK ZONE	
MID-1 AM	331	0.0	3000	331	0	0.36	0	70.2	63.8	49.7
1-2 AM	243	0.0	3000	243	0	0.36	0	70.2	63.8	49.7
2-3 AM	243	0.0	3000	243	0	0.36	0	70.2	63.8	49.7
3-4 AM	305	0.0	3000	305	0	0.36	0	70.2	63.8	49.7
4-5 AM	652	0.0	3000	652	0	0.36	0	69.9	63.7	49.7
5-6 AM	1994	0.0	OFF	1994	0	0.00	0	68.2	68.2	68.2
6-7 AM	4689	0.0	OFF	4689	0	0.00	0	58.8	58.8	58.8
7-8 AM	5403	0.0	OFF	5403	0	0.00	0	54.0	54.0	54.0
8-9 AM	4500	0.0	OFF	4500	0	0.00	0	60.1	60.1	60.1
9-10 AM	3516	0.0	OFF	3516	0	0.00	0	66.4	66.4	66.4
10-11 AM	3354	0.0	OFF	3354	0	0.00	0	66.6	66.6	66.6
11AM-NOON	3704	0.0	OFF	3704	0	0.00	0	65.6	65.6	65.6
NOON-1PM	3746	0.0	OFF	3746	0	0.00	0	65.3	65.3	65.3
1-2 PM	3695	0.0	OFF	3695	0	0.00	0	65.6	65.6	65.6
2-3 PM	4001	0.0	OFF	4001	0	0.00	0	63.5	63.5	63.5
3-4 PM	4665	0.0	OFF	4665	0	0.00	0	59.0	59.0	59.0
4-5 PM	4896	0.0	OFF	4896	0	0.00	0	57.4	57.4	57.4
5-6 PM	4681	0.0	OFF	4681	0	0.00	0	58.9	58.9	58.9
6-7 PM	3725	0.0	OFF	3725	0	0.00	0	65.4	65.4	65.4
7-8 PM	2492	0.0	3000	2492	0	0.40	0	67.6	61.1	47.0
8-9 PM	1906	0.0	3000	1906	0	0.34	0	68.4	62.7	49.7
9-10 PM	1751	0.0	3000	1751	0	0.34	0	68.6	62.8	49.7
10-11 PM	1410	0.0	3000	1410	0	0.34	0	69.0	63.0	49.7
11PM-MID	992	0.0	3000	992	0	0.35	0	69.5	63.3	49.7

**"OFF" INDICATES NO ROAD WORK (ALL LANES OPEN TO TRAFFIC)**

*----- SITE BREAKDOWN DELAYS -----*	
BREAKDOWN DURATION (MINS)	0
RANGE OF QUEUE DELAY - MIN (VEH-H) MAX	0.0
AV BREAKDOWNS PER DAY	0.00
AV QUEUE DELAY/DAY (VEH-H)	0.0
AV TOTAL DELAY/DAY (VEH-H)	0.0

*----- SITE ACCIDENT DELAYS -----*	
BREAKDOWN DURATION (MINS)	0
RANGE OF QUEUE DELAY - MIN (VEH-H) MAX	0
AV BREAKDOWNS PER DAY	0
AV QUEUE DELAY/DAY (VEH-H)	0
AV TOTAL DELAY/DAY (VEH-H)	0

AVERAGE ACCIDENT NUMBERS (PIA/DAY)	
MAIN ROUTE WITHOUT WORKS	0.0447
MAIN ROUTE WITH WORKS	0.0440
'DIVERSION'	0.0000

PIA: Personal Injury Accidents

ECONOMIC IMPACT ON ROAD USERS	
ROAD USER COSTS PER DAY	\$782
CONGESTED HOURS PER DAY*	0

\*Delays Exceeding User-Specified Maximum

**IH 94: STH 16 TO USH 18 (WAUKESHA COUNTY)  
NIGHTTIME CLOSURE  
NO DIVERSION ROUTE (MAX QUEUE METHOD)**

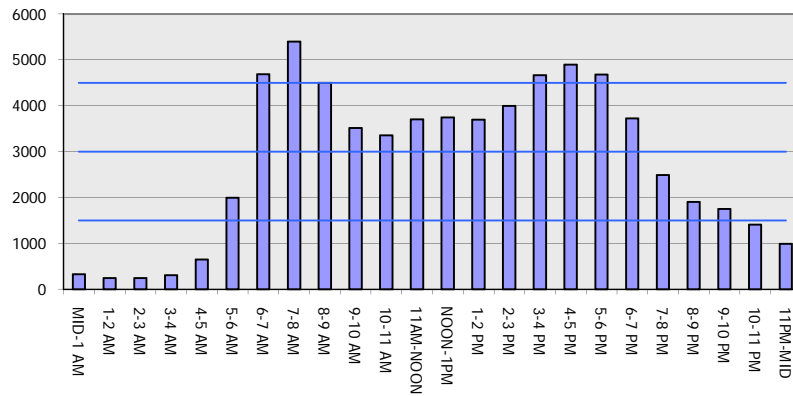
**OCTOBER**

Analyzed for 2009  
Construction Season

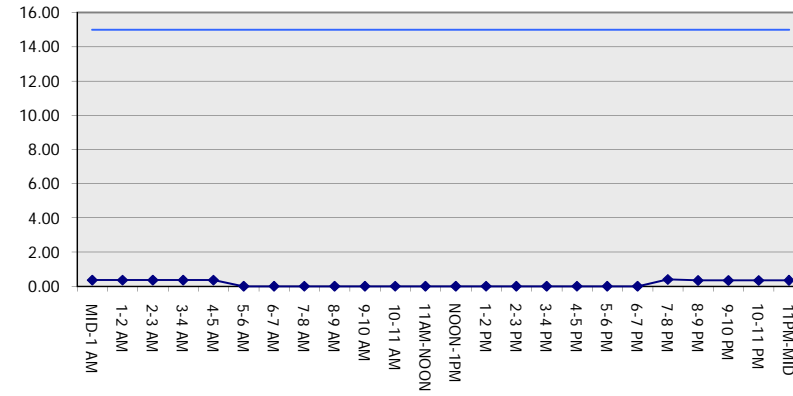
**GRAPHICAL REPRESENTATION OF TRAFFIC MODEL INPUT AND OUTPUT**

**FRIDAY EASTBOUND DIRECTION**

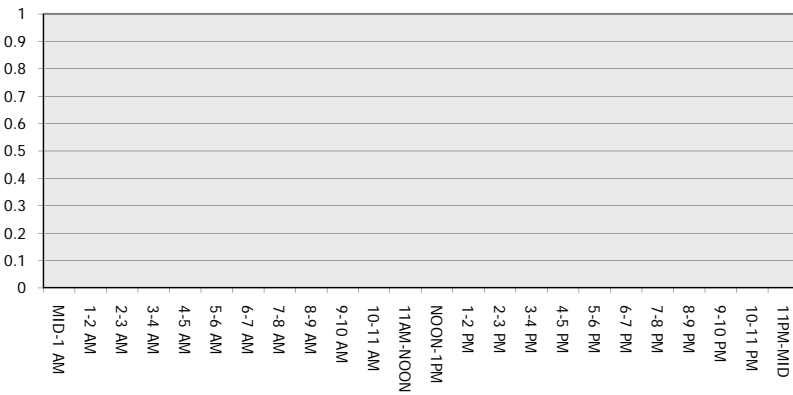
**Main Route - Traffic Demand (Vehicles Per Hour)**



**Main Route Average Delay Per Vehicle (Minutes)**



**Main Route - Average Queue Length (Vehicles)**



**Main Route - Average Speed (MPH)**

