

<b>IH 94: STH 16 TO USH 18 (WAUKESHA COUNTY)</b> <b>NIGHTTIME CLOSURE</b> <b>NO DIVERSION ROUTE (MAX QUEUE METHOD)</b>	<b>AUGUST</b>
	Analyzed for 2009 Construction Season

**SUMMARY OF TRAFFIC MODEL OUTPUT**

MON-THUR                  WESTBOUND DIRECTION

TIME OF DAY	FLOWS AND CAPACITY IN VEH/HR						AVERAGE SPEEDS IN MPH			
	MAIN ROUTE		SITE CAPA CITY	FLOW		AV.DEL PER VEH (MINS)	AVERAGE QUEUE (VEH)	MAIN ROUTE		SITE
	DEMAND FLOW	PCT HEAVY		MAIN ROUTE	'DIVER TED'			WITHOUT WORK ZONE	WITH WORK ZONE	
MID-1 AM	537	0.0	3000	537	0	0.36	0	70.0	63.7	49.7
1-2 AM	315	0.0	3000	315	0	0.36	0	70.2	63.8	49.7
2-3 AM	244	0.0	3000	244	0	0.36	0	70.2	63.8	49.7
3-4 AM	270	0.0	3000	270	0	0.36	0	70.2	63.8	49.7
4-5 AM	455	0.0	3000	455	0	0.36	0	70.2	63.8	49.7
5-6 AM	1108	0.0	OFF	1108	0	0.00	0	69.4	69.4	69.4
6-7 AM	2341	0.0	OFF	2341	0	0.00	0	67.8	67.8	67.8
7-8 AM	3351	0.0	OFF	3351	0	0.00	0	66.6	66.6	66.6
8-9 AM	3073	0.0	OFF	3073	0	0.00	0	66.9	66.9	66.9
9-10 AM	2440	0.0	OFF	2440	0	0.00	0	67.7	67.7	67.7
10-11 AM	2446	0.0	OFF	2446	0	0.00	0	67.7	67.7	67.7
11AM-NOON	2677	0.0	OFF	2677	0	0.00	0	67.4	67.4	67.4
NOON-1PM	2875	0.0	OFF	2875	0	0.00	0	67.1	67.1	67.1
1-2 PM	2962	0.0	OFF	2962	0	0.00	0	67.1	67.1	67.1
2-3 PM	3330	0.0	OFF	3330	0	0.00	0	66.6	66.6	66.6
3-4 PM	3985	0.0	OFF	3985	0	0.00	0	63.7	63.7	63.7
4-5 PM	4421	0.0	OFF	4421	0	0.00	0	60.7	60.7	60.7
5-6 PM	4438	0.0	OFF	4438	0	0.00	0	60.5	60.5	60.5
6-7 PM	3320	0.0	OFF	3320	0	0.00	0	66.6	66.6	66.6
7-8 PM	2399	0.0	3000	2399	0	0.34	0	67.8	62.2	49.4
8-9 PM	2120	0.0	3000	2120	0	0.33	0	68.1	62.5	49.7
9-10 PM	1875	0.0	3000	1875	0	0.34	0	68.4	62.7	49.7
10-11 PM	1461	0.0	3000	1461	0	0.34	0	68.9	63.0	49.7
11PM-MID	1006	0.0	3000	1006	0	0.35	0	69.5	63.3	49.7

"OFF" INDICATES NO ROAD WORK (ALL LANES OPEN TO TRAFFIC)

*----- SITE BREAKDOWN DELAYS -----*	
BREAKDOWN DURATION (MINS)	0
RANGE OF QUEUE DELAY - MIN (VEH-H) MAX	0.0
AV BREAKDOWNS PER DAY	0.00
AV QUEUE DELAY/DAY (VEH-H)	0.0
AV TOTAL DELAY/DAY (VEH-H)	0.0

*----- SITE ACCIDENT DELAYS -----*	
BREAKDOWN DURATION (MINS)	0
RANGE OF QUEUE DELAY - MIN (VEH-H) MAX	0
AV BREAKDOWNS PER DAY	0
AV QUEUE DELAY/DAY (VEH-H)	0
AV TOTAL DELAY/DAY (VEH-H)	0

AVERAGE ACCIDENT NUMBERS (PIA/DAY)	
MAIN ROUTE WITHOUT WORKS	0.0357
MAIN ROUTE WITH WORKS	0.0350
'DIVERSION'	0.0000
PIA: Personal Injury Accidents	
IMPACTS ON ROAD USERS	
ROAD USER COSTS PER DAY	\$727
CONGESTED HOURS PER DAY*	0

\*Delays Exceeding User-Specified Maximum

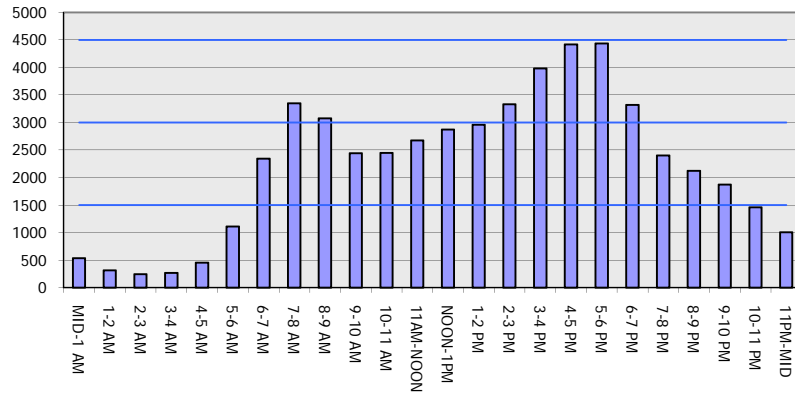
**IH 94: STH 16 TO USH 18 (WAUKESHA COUNTY)  
NIGHTTIME CLOSURE  
NO DIVERSION ROUTE (MAX QUEUE METHOD)**

**AUGUST**  
Analyzed for 2009  
Construction Season

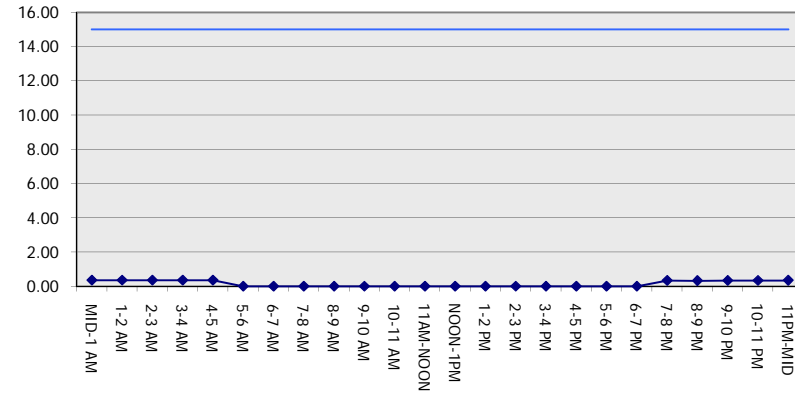
**GRAPHICAL REPRESENTATION OF TRAFFIC MODEL INPUT AND OUTPUT**

**MON-THUR WESTBOUND DIRECTION**

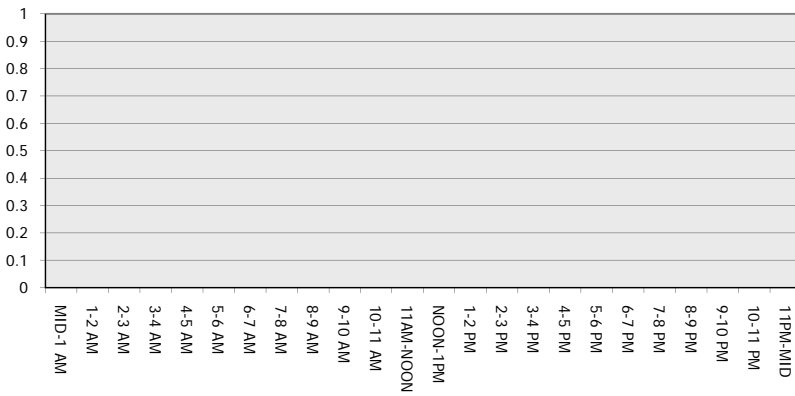
**Main Route - Traffic Demand (Vehicles Per Hour)**



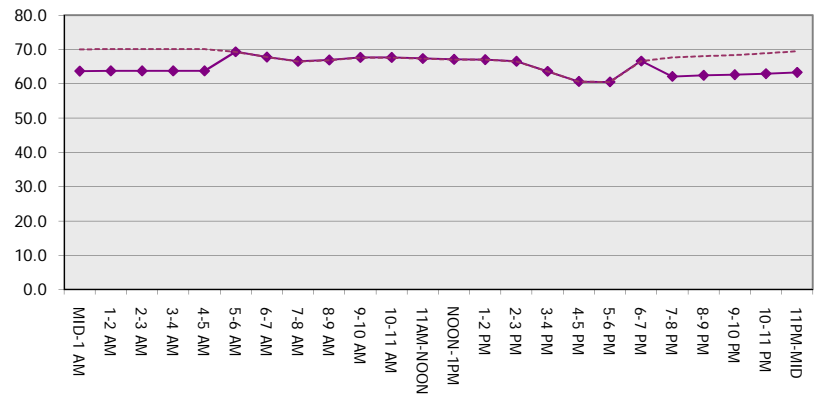
**Main Route Average Delay Per Vehicle (Minutes)**



**Main Route - Average Queue Length (Vehicles)**



**Main Route - Average Speed (MPH)**



<b>IH 94: STH 16 TO USH 18 (WAUKESHA COUNTY)</b> <b>NIGHTTIME CLOSURE</b> <b>NO DIVERSION ROUTE (MAX QUEUE METHOD)</b>	<b>AUGUST</b>
	Analyzed for 2009 Construction Season

**SUMMARY OF TRAFFIC MODEL OUTPUT**

MON-THUR                      EASTBOUND DIRECTION

TIME OF DAY	FLOWS AND CAPACITY IN VEH/HR							AVERAGE SPEEDS IN MPH		
	MAIN ROUTE		SITE CAPA CITY	FLOW		AV.DEL PER VEH (MINS)	AVERAGE QUEUE (VEH)	MAIN ROUTE		SITE
	DEMAND FLOW	PCT HEAVY		MAIN ROUTE	'DIVER TED'			WITHOUT WORK ZONE	WITH WORK ZONE	
MID-1 AM	344	0.0	3000	344	0	0.36	0	70.2	63.8	49.7
1-2 AM	249	0.0	3000	249	0	0.36	0	70.2	63.8	49.7
2-3 AM	209	0.0	3000	209	0	0.36	0	70.2	63.8	49.7
3-4 AM	283	0.0	3000	283	0	0.36	0	70.2	63.8	49.7
4-5 AM	709	0.0	3000	709	0	0.36	0	69.9	63.6	49.7
5-6 AM	2215	0.0	OFF	2215	0	0.00	0	68.0	68.0	68.0
6-7 AM	4932	0.0	OFF	4932	0	0.00	0	57.1	57.1	57.1
7-8 AM	5796	0.0	OFF	5796	0	0.00	0	51.2	51.2	51.2
8-9 AM	4715	0.0	OFF	4715	0	0.00	0	58.6	58.6	58.6
9-10 AM	3676	0.0	OFF	3676	0	0.00	0	65.8	65.8	65.8
10-11 AM	3512	0.0	OFF	3512	0	0.00	0	66.4	66.4	66.4
11AM-NOON	3701	0.0	OFF	3701	0	0.00	0	65.6	65.6	65.6
NOON-1PM	3595	0.0	OFF	3595	0	0.00	0	66.3	66.3	66.3
1-2 PM	3500	0.0	OFF	3500	0	0.00	0	66.4	66.4	66.4
2-3 PM	3721	0.0	OFF	3721	0	0.00	0	65.5	65.5	65.5
3-4 PM	4220	0.0	OFF	4220	0	0.00	0	62.0	62.0	62.0
4-5 PM	4618	0.0	OFF	4618	0	0.00	0	59.3	59.3	59.3
5-6 PM	4423	0.0	OFF	4423	0	0.00	0	60.6	60.6	60.6
6-7 PM	3231	0.0	OFF	3231	0	0.00	0	66.7	66.7	66.7
7-8 PM	2292	0.0	3000	2292	0	0.33	0	67.9	62.3	49.7
8-9 PM	1959	0.0	3000	1959	0	0.34	0	68.3	62.6	49.7
9-10 PM	1586	0.0	3000	1586	0	0.34	0	68.7	62.9	49.7
10-11 PM	1083	0.0	3000	1083	0	0.35	0	69.4	63.3	49.7
11PM-MID	723	0.0	3000	723	0	0.35	0	69.9	63.6	49.7

"OFF" INDICATES NO ROAD WORK (ALL LANES OPEN TO TRAFFIC)

*----- SITE BREAKDOWN DELAYS -----*	
BREAKDOWN DURATION (MINS)	0
RANGE OF QUEUE DELAY - MIN	0.0
(VEH-H) MAX	0.0
AV BREAKDOWNS PER DAY	0.00
AV QUEUE DELAY/DAY (VEH-H)	0.0
AV TOTAL DELAY/DAY (VEH-H)	0.0

*----- SITE ACCIDENT DELAYS -----*	
BREAKDOWN DURATION (MINS)	0
RANGE OF QUEUE DELAY - MIN	0
(VEH-H) MAX	0
AV BREAKDOWNS PER DAY	0
AV QUEUE DELAY/DAY (VEH-H)	0
AV TOTAL DELAY/DAY (VEH-H)	0

AVERAGE ACCIDENT NUMBERS (PIA/DAY)	
MAIN ROUTE WITHOUT WORKS	0.0436
MAIN ROUTE WITH WORKS	0.0430
'DIVERSION'	0.0000

PIA: Personal Injury Accidents

ECONOMIC IMPACT ON ROAD USERS	
ROAD USER COSTS PER DAY	\$644
CONGESTED HOURS PER DAY*	0

\*Delays Exceeding User-Specified Maximum

**IH 94: STH 16 TO USH 18 (WAUKESHA COUNTY)  
NIGHTTIME CLOSURE  
NO DIVERSION ROUTE (MAX QUEUE METHOD)**

**AUGUST**

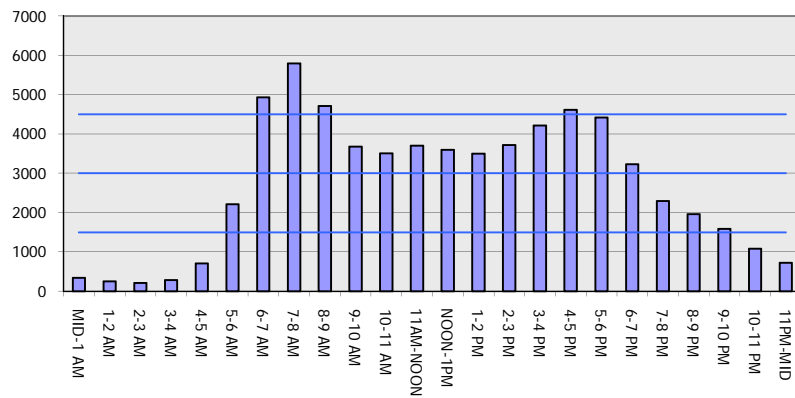
Analyzed for 2009  
Construction Season

**GRAPHICAL REPRESENTATION OF TRAFFIC MODEL INPUT AND OUTPUT**

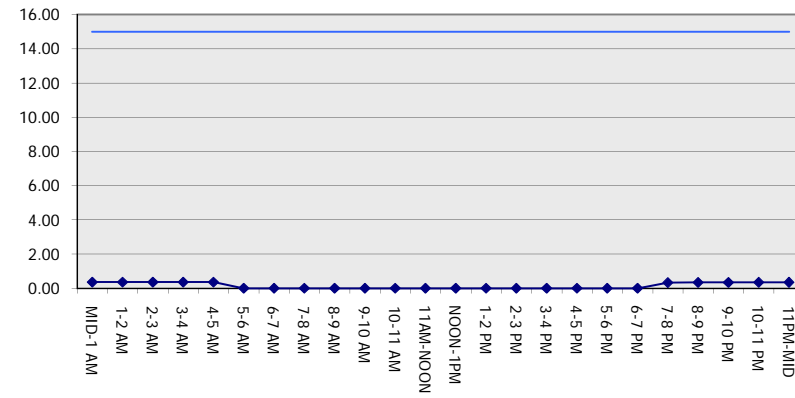
**MON-THUR**

**EASTBOUND DIRECTION**

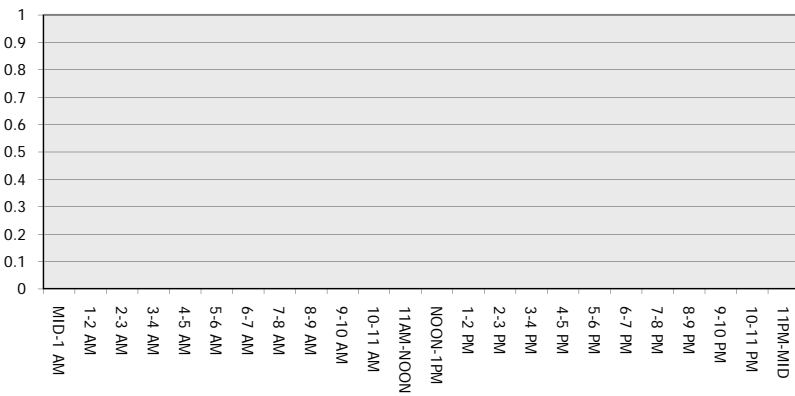
**Main Route - Traffic Demand (Vehicles Per Hour)**



**Main Route Average Delay Per Vehicle (Minutes)**



**Main Route - Average Queue Length (Vehicles)**



**Main Route - Average Speed (MPH)**

