

<b>IH 94: STH 16 TO USH 18 (WAUKESHA COUNTY)</b> <b>NIGHTTIME CLOSURE</b> <b>NO DIVERSION ROUTE (MAX QUEUE METHOD)</b>	<b>AUGUST</b>
	Analyzed for 2009 Construction Season

**SUMMARY OF TRAFFIC MODEL OUTPUT**

FRIDAY WESTBOUND DIRECTION

TIME OF DAY	FLOWS AND CAPACITY IN VEH/HR						AVERAGE SPEEDS IN MPH			
	MAIN ROUTE		SITE CAPA CITY	FLOW		AV.DEL PER VEH (MINS)	AVERAGE QUEUE (VEH)	MAIN ROUTE		SITE
	DEMAND FLOW	PCT HEAVY		MAIN ROUTE	'DIVER TED'			WITHOUT WORK ZONE	WITH WORK ZONE	
MID-1 AM	663	0.0	3000	663	0	0.36	0	69.9	63.7	49.7
1-2 AM	416	0.0	3000	416	0	0.36	0	70.2	63.8	49.7
2-3 AM	318	0.0	3000	318	0	0.36	0	70.2	63.8	49.7
3-4 AM	327	0.0	3000	327	0	0.36	0	70.2	63.8	49.7
4-5 AM	459	0.0	3000	459	0	0.36	0	70.2	63.8	49.7
5-6 AM	1099	0.0	OFF	1099	0	0.00	0	69.4	69.4	69.4
6-7 AM	2353	0.0	OFF	2353	0	0.00	0	67.8	67.8	67.8
7-8 AM	3249	0.0	OFF	3249	0	0.00	0	66.7	66.7	66.7
8-9 AM	3027	0.0	OFF	3027	0	0.00	0	66.9	66.9	66.9
9-10 AM	2604	0.0	OFF	2604	0	0.00	0	67.5	67.5	67.5
10-11 AM	2777	0.0	OFF	2777	0	0.00	0	67.3	67.3	67.3
11AM-NOON	3125	0.0	OFF	3125	0	0.00	0	66.8	66.8	66.8
NOON-1PM	3482	0.0	OFF	3482	0	0.00	0	66.4	66.4	66.4
1-2 PM	3570	0.0	OFF	3570	0	0.00	0	66.3	66.3	66.3
2-3 PM	3963	0.0	OFF	3963	0	0.00	0	63.8	63.8	63.8
3-4 PM	4423	0.0	OFF	4423	0	0.00	0	60.6	60.6	60.6
4-5 PM	4610	0.0	OFF	4610	0	0.00	0	59.4	59.4	59.4
5-6 PM	4513	0.0	OFF	4513	0	0.00	0	60.1	60.1	60.1
6-7 PM	3658	0.0	OFF	3658	0	0.00	0	65.9	65.9	65.9
7-8 PM	2650	0.0	3000	2650	0	0.50	0	67.4	59.5	43.5
8-9 PM	2229	0.0	3000	2229	0	0.33	0	67.9	62.4	49.7
9-10 PM	2261	0.0	3000	2261	0	0.33	0	67.9	62.3	49.7
10-11 PM	2228	0.0	3000	2228	0	0.33	0	67.9	62.4	49.7
11PM-MID	1485	0.0	3000	1485	0	0.34	0	68.9	63.0	49.7

"OFF" INDICATES NO ROAD WORK (ALL LANES OPEN TO TRAFFIC)

*----- SITE BREAKDOWN DELAYS -----*	
BREAKDOWN DURATION (MINS)	0
RANGE OF QUEUE DELAY - MIN	0.0
(VEH-H) MAX	0.0
AV BREAKDOWNS PER DAY	0.00
AV QUEUE DELAY/DAY (VEH-H)	0.0
AV TOTAL DELAY/DAY (VEH-H)	0.0

*----- SITE ACCIDENT DELAYS -----*	
BREAKDOWN DURATION (MINS)	0
RANGE OF QUEUE DELAY - MIN	0
(VEH-H) MAX	0
AV BREAKDOWNS PER DAY	0
AV QUEUE DELAY/DAY (VEH-H)	0
AV TOTAL DELAY/DAY (VEH-H)	0

AVERAGE ACCIDENT NUMBERS (PIA/DAY)	
MAIN ROUTE WITHOUT WORKS	0.0398
MAIN ROUTE WITH WORKS	0.0389
'DIVERSION'	0.0000
<small>PIA: Personal Injury Accidents</small>	
IMPACTS ON ROAD USERS	
ROAD USER COSTS PER DAY	\$37,133
CONGESTED HOURS PER DAY*	0

\*Delays Exceeding User-Specified Maximum

**IH 94: STH 16 TO USH 18 (WAUKESHA COUNTY)  
NIGHTTIME CLOSURE  
NO DIVERSION ROUTE (MAX QUEUE METHOD)**

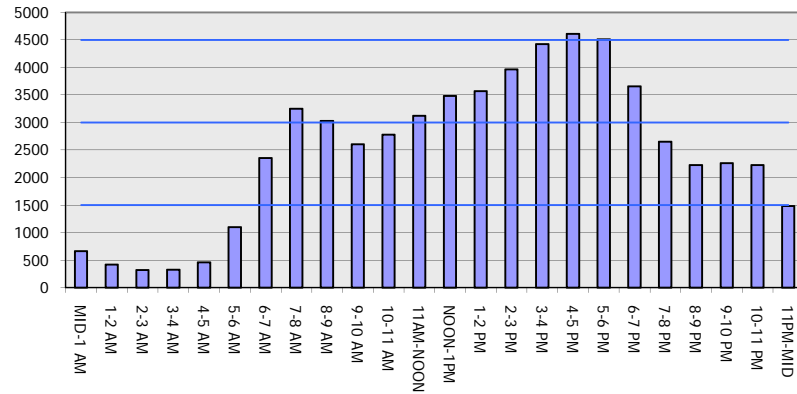
**AUGUST**

Analyzed for 2009  
Construction Season

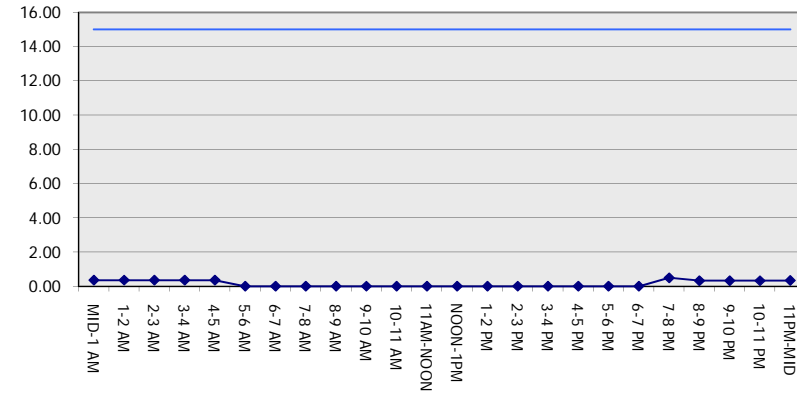
**GRAPHICAL REPRESENTATION OF TRAFFIC MODEL INPUT AND OUTPUT**

**FRIDAY WESTBOUND DIRECTION**

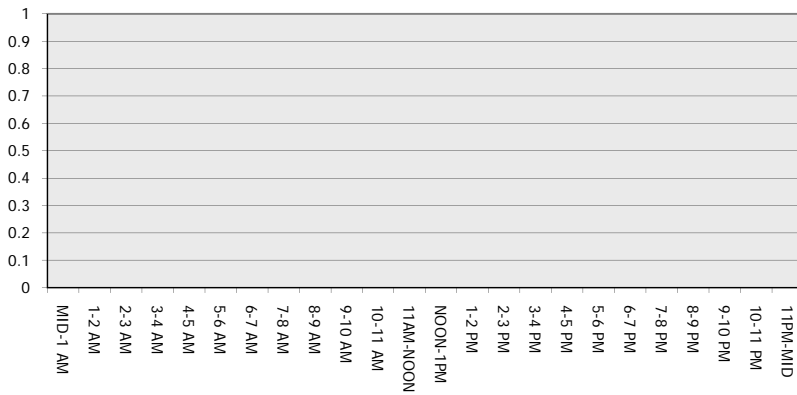
**Main Route - Traffic Demand (Vehicles Per Hour)**



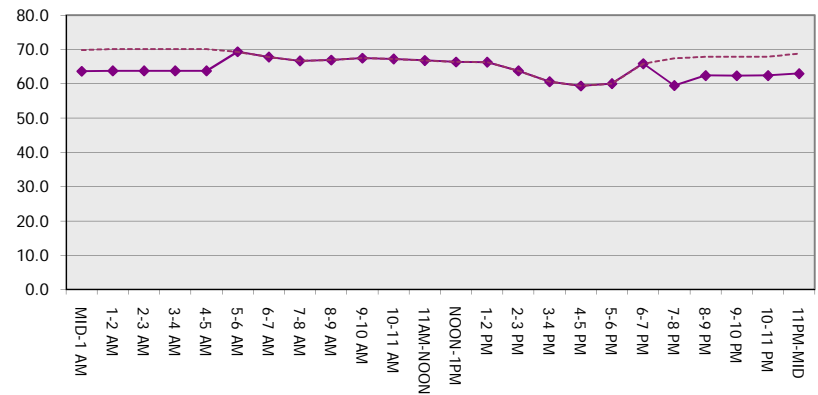
**Main Route Average Delay Per Vehicle (Minutes)**



**Main Route - Average Queue Length (Vehicles)**



**Main Route - Average Speed (MPH)**



<b>IH 94: STH 16 TO USH 18 (WAUKESHA COUNTY)</b> <b>NIGHTTIME CLOSURE</b> <b>NO DIVERSION ROUTE (MAX QUEUE METHOD)</b>	<b>AUGUST</b>
	Analyzed for 2009 Construction Season

**SUMMARY OF TRAFFIC MODEL OUTPUT**

FRIDAY EASTBOUND DIRECTION

TIME OF DAY	FLOWS AND CAPACITY IN VEH/HR						AVERAGE SPEEDS IN MPH			
	MAIN ROUTE		SITE CAPA CITY	FLOW		AV.DEL PER VEH (MINS)	AVERAGE QUEUE (VEH)	MAIN ROUTE		SITE
	DEMAND FLOW	PCT HEAVY		MAIN ROUTE	'DIVER TED'			WITHOUT WORK ZONE	WITH WORK ZONE	
MID-1 AM	396	0.0	3000	396	0	0.36	0	70.2	63.8	49.7
1-2 AM	292	0.0	3000	292	0	0.36	0	70.2	63.8	49.7
2-3 AM	259	0.0	3000	259	0	0.36	0	70.2	63.8	49.7
3-4 AM	294	0.0	3000	294	0	0.36	0	70.2	63.8	49.7
4-5 AM	675	0.0	3000	675	0	0.36	0	69.9	63.6	49.7
5-6 AM	2010	0.0	OFF	2010	0	0.00	0	68.2	68.2	68.2
6-7 AM	4400	0.0	OFF	4400	0	0.00	0	60.8	60.8	60.8
7-8 AM	5481	0.0	OFF	5481	0	0.00	0	53.4	53.4	53.4
8-9 AM	4443	0.0	OFF	4443	0	0.00	0	60.5	60.5	60.5
9-10 AM	3689	0.0	OFF	3689	0	0.00	0	65.6	65.6	65.6
10-11 AM	3682	0.0	OFF	3682	0	0.00	0	65.7	65.7	65.7
11AM-NOON	3826	0.0	OFF	3826	0	0.00	0	64.7	64.7	64.7
NOON-1PM	3849	0.0	OFF	3849	0	0.00	0	64.6	64.6	64.6
1-2 PM	3903	0.0	OFF	3903	0	0.00	0	64.2	64.2	64.2
2-3 PM	4163	0.0	OFF	4163	0	0.00	0	62.4	62.4	62.4
3-4 PM	4782	0.0	OFF	4782	0	0.00	0	58.2	58.2	58.2
4-5 PM	4908	0.0	OFF	4908	0	0.00	0	57.3	57.3	57.3
5-6 PM	4595	0.0	OFF	4595	0	0.00	0	59.5	59.5	59.5
6-7 PM	3797	0.0	OFF	3797	0	0.00	0	64.9	64.9	64.9
7-8 PM	2666	0.0	3000	2666	0	0.51	0	67.4	59.3	43.1
8-9 PM	2196	0.0	3000	2196	0	0.33	0	68.0	62.4	49.7
9-10 PM	1888	0.0	3000	1888	0	0.34	0	68.4	62.7	49.7
10-11 PM	1497	0.0	3000	1497	0	0.34	0	68.9	63.0	49.7
11PM-MID	1081	0.0	3000	1081	0	0.35	0	69.4	63.3	49.7

"OFF" INDICATES NO ROAD WORK (ALL LANES OPEN TO TRAFFIC)

*----- SITE BREAKDOWN DELAYS -----*	
BREAKDOWN DURATION (MINS)	0
RANGE OF QUEUE DELAY - MIN (VEH-H) MAX	0.0
AV BREAKDOWNS PER DAY	0.00
AV QUEUE DELAY/DAY (VEH-H)	0.0
AV TOTAL DELAY/DAY (VEH-H)	0.0

*----- SITE ACCIDENT DELAYS -----*	
BREAKDOWN DURATION (MINS)	0
RANGE OF QUEUE DELAY - MIN (VEH-H) MAX	0
AV BREAKDOWNS PER DAY	0
AV QUEUE DELAY/DAY (VEH-H)	0
AV TOTAL DELAY/DAY (VEH-H)	0

AVERAGE ACCIDENT NUMBERS (PIA/DAY)	
MAIN ROUTE WITHOUT WORKS	0.0460
MAIN ROUTE WITH WORKS	0.0452
'DIVERSION'	0.0000

PIA: Personal Injury Accidents

ECONOMIC IMPACT ON ROAD USERS	
ROAD USER COSTS PER DAY	\$33,066
CONGESTED HOURS PER DAY*	0

\*Delays Exceeding User-Specified Maximum

**IH 94: STH 16 TO USH 18 (WAUKESHA COUNTY)  
NIGHTTIME CLOSURE  
NO DIVERSION ROUTE (MAX QUEUE METHOD)**

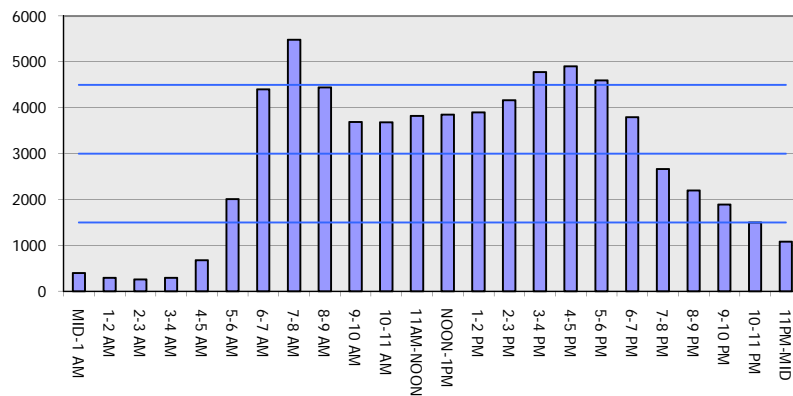
**AUGUST**

Analyzed for 2009  
Construction Season

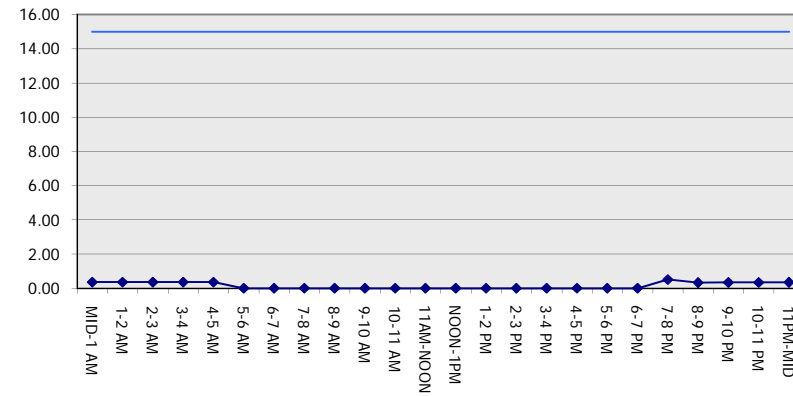
**GRAPHICAL REPRESENTATION OF TRAFFIC MODEL INPUT AND OUTPUT**

**FRIDAY EASTBOUND DIRECTION**

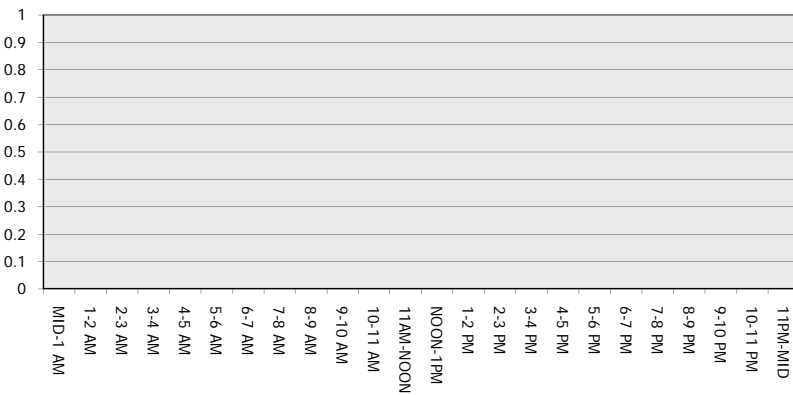
**Main Route - Traffic Demand (Vehicles Per Hour)**



**Main Route Average Delay Per Vehicle (Minutes)**



**Main Route - Average Queue Length (Vehicles)**



**Main Route - Average Speed (MPH)**

