

USH 41/45: CTH Q TO STH 145 (WAUKESHA AND MILWAUKEE COUNTIES) NIGHTTIME 2 LANE CLOSURE NO DIVERSION ROUTE (MAX QUEUE METHOD)	OCTOBER
	Analyzed for 2009 Construction Season

SUMMARY OF TRAFFIC MODEL OUTPUT

SUNDAY SOUTHBOUND DIRECTION

TIME OF DAY	FLOWS AND CAPACITY IN VEH/HR						AVERAGE SPEEDS IN MPH				
	MAIN ROUTE		SITE CAPA CITY	FLOW		AV.DEL PER VEH (MINS)	AVERAGE QUEUE (VEH)	MAIN ROUTE		SITE	
	DEMAND FLOW	PCT HEAVY		MAIN ROUTE	'DIVER TED'			WITHOUT WORK ZONE	WITH WORK ZONE		
MID-1 AM	661	0.0	1500	661	0	0.55	0	69.9	61.4	42.9	
1-2 AM	396	0.0	1500	396	0	0.52	0	70.2	62.0	43.9	
2-3 AM	299	0.0	1500	299	0	0.51	0	70.2	62.1	44.3	
3-4 AM	213	0.0	1500	213	0	0.50	0	70.2	62.3	44.6	
4-5 AM	217	0.0	1500	217	0	0.50	0	70.2	62.3	44.6	
5-6 AM	374	0.0	1500	374	0	0.52	0	70.2	62.0	44.0	
6-7 AM	640	0.0	1500	640	0	0.55	0	69.9	61.4	43.0	
7-8 AM	916	0.0	1500	916	0	0.58	0	69.6	60.7	42.0	
8-9 AM	1271	0.0	1499	1271	0	0.79	0	69.2	57.7	36.8	
9-10 AM	2080	0.0	OFF	2080	0	0.00	0	68.1	68.1	68.1	
10-11 AM	2676	0.0	OFF	2676	0	0.00	0	67.4	67.4	67.4	
11AM-NOON	3255	0.0	OFF	3255	0	0.00	0	66.7	66.7	66.7	
NOON-1PM	3540	0.0	OFF	3540	0	0.00	0	66.3	66.3	66.3	
1-2 PM	3537	0.0	OFF	3537	0	0.00	0	66.3	66.3	66.3	
2-3 PM	3680	0.0	OFF	3680	0	0.00	0	65.7	65.7	65.7	
3-4 PM	3785	0.0	OFF	3785	0	0.00	0	65.0	65.0	65.0	
4-5 PM	3892	0.0	OFF	3892	0	0.00	0	64.3	64.3	64.3	
5-6 PM	3716	0.0	OFF	3716	0	0.00	0	65.5	65.5	65.5	
6-7 PM	3354	0.0	OFF	3354	0	0.00	0	66.6	66.6	66.6	
7-8 PM	2636	0.0	1499	1691	945	13.94+	352	67.4	15.3	35.6	
8-9 PM	1828	0.0	1499	1702	126	14.28+	352	68.4	15.1	30.8	
9-10 PM	1289	0.0	1499	1289	0	12.91	318	69.1	16.3	31.1	
10-11 PM	856	0.0	1500	856	0	1.29	30	69.7	52.5	42.0	
11PM-MID	509	0.0	1500	509	0	0.53	0	70.1	61.7	43.5	

"OFF" INDICATES NO ROAD WORK (ALL LANES OPEN TO TRAFFIC)

+ INDICATES QUEUEING EXCEEDS USER-SPECIFIED MAXIMUM LIMIT

BREAKDOWN DURATION (MINS)	0
RANGE OF QUEUE DELAY - MIN (VEH-H) MAX	0.0
AV BREAKDOWNS PER DAY	0.00
AV QUEUE DELAY/DAY (VEH-H)	0.0
AV TOTAL DELAY/DAY (VEH-H)	0.0

BREAKDOWN DURATION (MINS)	0
RANGE OF QUEUE DELAY - MIN (VEH-H) MAX	0
AV BREAKDOWNS PER DAY	0
AV QUEUE DELAY/DAY (VEH-H)	0
AV TOTAL DELAY/DAY (VEH-H)	0

MAIN ROUTE WITHOUT WORKS	0.0334
MAIN ROUTE WITH WORKS	0.0319
'DIVERSION'	0.0018
<small>PIA: Personal Injury Accidents</small>	
IMPACTS ON ROAD USERS	
ROAD USER COSTS PER DAY	\$21,968
CONGESTED HOURS PER DAY*	2

*Delays Exceeding User-Specified Maximum

USH 41/45: CTH Q TO STH 145 (WAUKESHA AND MILWAUKEE COUNTIES)
NIGHTTIME 2 LANE CLOSURE
NO DIVERSION ROUTE (MAX QUEUE METHOD)

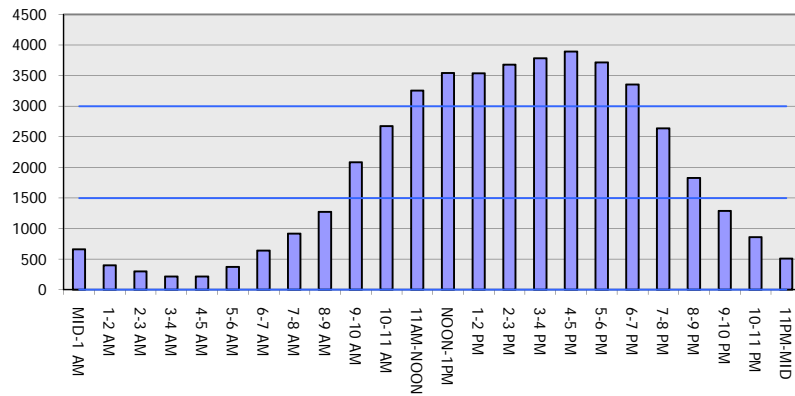
OCTOBER

Analyzed for 2009
 Construction Season

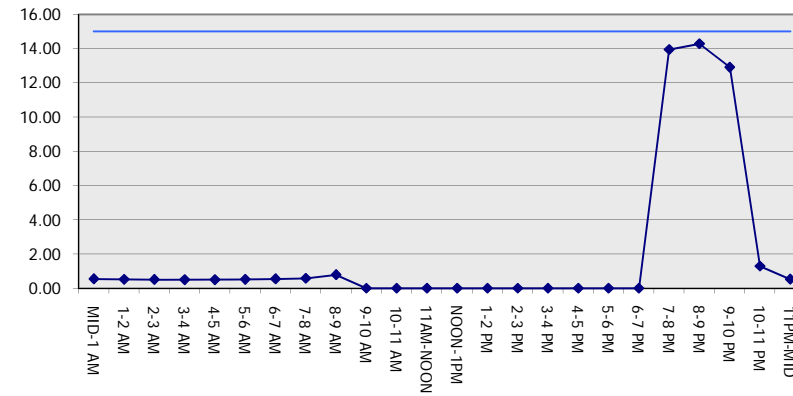
GRAPHICAL REPRESENTATION OF TRAFFIC MODEL INPUT AND OUTPUT

SUNDAY SOUTHBOUND DIRECTION

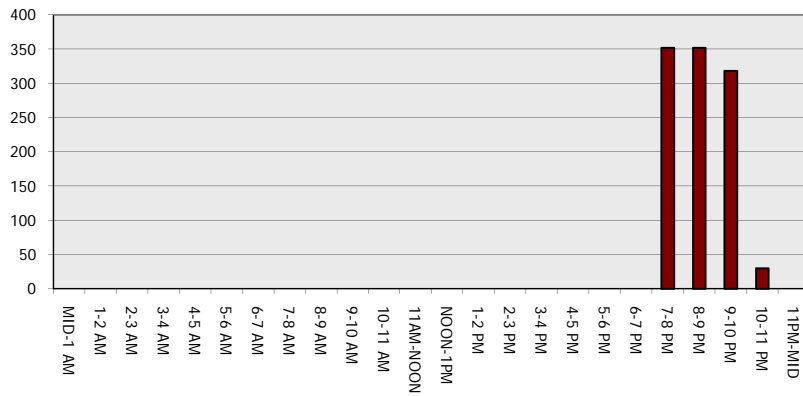
Main Route - Traffic Demand (Vehicles Per Hour)



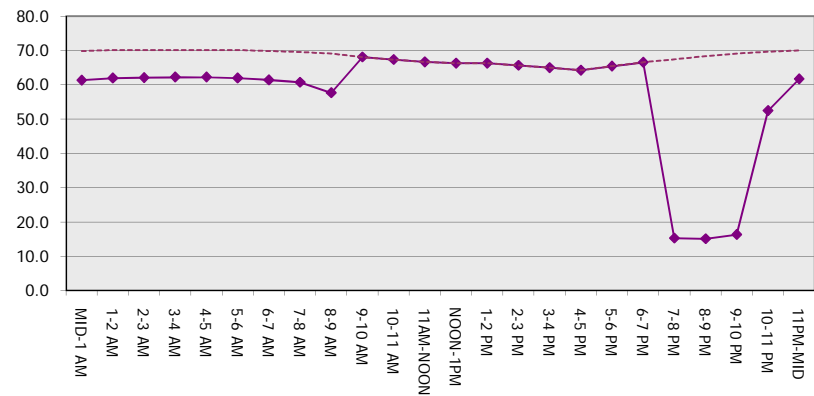
Main Route Average Delay Per Vehicle (Minutes)



Main Route - Average Queue Length (Vehicles)



Main Route - Average Speed (MPH)



USH 41/45: CTH Q TO STH 145 (WAUKESHA AND MILWAUKEE COUNTIES) NIGHTTIME 2 LANE CLOSURE NO DIVERSION ROUTE (MAX QUEUE METHOD)	OCTOBER
	Analyzed for 2009 Construction Season

SUMMARY OF TRAFFIC MODEL OUTPUT

SUNDAY NORTHBOUND DIRECTION

TIME OF DAY	FLOWS AND CAPACITY IN VEH/HR						AVERAGE SPEEDS IN MPH			
	MAIN ROUTE		SITE CAPA CITY	FLOW		AV.DEL PER VEH (MINS)	AVERAGE QUEUE (VEH)	MAIN ROUTE		SITE
	DEMAND FLOW	PCT HEAVY		MAIN ROUTE	'DIVER TED'			WITHOUT WORK ZONE	WITH WORK ZONE	
MID-1 AM	714	0.0	1500	714	0	0.56	0	69.9	61.2	42.7
1-2 AM	415	0.0	1500	415	0	0.52	0	70.2	61.9	43.8
2-3 AM	367	0.0	1500	367	0	0.52	0	70.2	62.0	44.0
3-4 AM	245	0.0	1500	245	0	0.50	0	70.2	62.2	44.5
4-5 AM	231	0.0	1500	231	0	0.50	0	70.2	62.2	44.6
5-6 AM	442	0.0	1500	442	0	0.53	0	70.2	61.9	43.7
6-7 AM	563	0.0	1500	563	0	0.54	0	70.0	61.6	43.3
7-8 AM	932	0.0	1500	932	0	0.58	0	69.6	60.7	41.9
8-9 AM	1345	0.0	1499	1345	0	0.89	0	69.1	56.4	34.6
9-10 AM	1909	0.0	OFF	1909	0	0.00	0	68.4	68.4	68.4
10-11 AM	2502	0.0	OFF	2502	0	0.00	0	67.6	67.6	67.6
11AM-NOON	3035	0.0	OFF	3035	0	0.00	0	66.9	66.9	66.9
NOON-1PM	3286	0.0	OFF	3286	0	0.00	0	66.6	66.6	66.6
1-2 PM	3229	0.0	OFF	3229	0	0.00	0	66.7	66.7	66.7
2-3 PM	2986	0.0	OFF	2986	0	0.00	0	67.0	67.0	67.0
3-4 PM	3203	0.0	OFF	3203	0	0.00	0	66.8	66.8	66.8
4-5 PM	3058	0.0	OFF	3058	0	0.00	0	66.9	66.9	66.9
5-6 PM	2647	0.0	OFF	2647	0	0.00	0	67.4	67.4	67.4
6-7 PM	2313	0.0	OFF	2313	0	0.00	0	67.9	67.9	67.9
7-8 PM	1789	0.0	1499	1789	0	7.19	176	68.5	24.6	30.8
8-9 PM	1285	0.0	1499	1285	0	8.37	204	69.1	22.3	32.0
9-10 PM	1073	0.0	1500	1073	0	0.82	7	69.4	57.5	41.0
10-11 PM	904	0.0	1500	904	0	0.58	0	69.6	60.8	42.0
11PM-MID	548	0.0	1500	548	0	0.54	0	70.0	61.6	43.3

"OFF" INDICATES NO ROAD WORK (ALL LANES OPEN TO TRAFFIC)

----- SITE BREAKDOWN DELAYS -----	
BREAKDOWN DURATION (MINS)	0
RANGE OF QUEUE DELAY - MIN (VEH-H) MAX	0.0
AV BREAKDOWNS PER DAY	0.00
AV QUEUE DELAY/DAY (VEH-H)	0.0
AV TOTAL DELAY/DAY (VEH-H)	0.0

----- SITE ACCIDENT DELAYS -----	
BREAKDOWN DURATION (MINS)	0
RANGE OF QUEUE DELAY - MIN (VEH-H) MAX	0
AV BREAKDOWNS PER DAY	0
AV QUEUE DELAY/DAY (VEH-H)	0
AV TOTAL DELAY/DAY (VEH-H)	0

AVERAGE ACCIDENT NUMBERS (PIA/DAY)	
MAIN ROUTE WITHOUT WORKS	0.0286
MAIN ROUTE WITH WORKS	0.0278
'DIVERSION'	0.0000

PIA: Personal Injury Accidents

ECONOMIC IMPACT ON ROAD USERS	
ROAD USER COSTS PER DAY	\$7,500
CONGESTED HOURS PER DAY*	0

*Delays Exceeding User-Specified Maximum

USH 41/45: CTH Q TO STH 145 (WAUKESHA AND MILWAUKEE COUNTIES)
NIGHTTIME 2 LANE CLOSURE
NO DIVERSION ROUTE (MAX QUEUE METHOD)

OCTOBER

Analyzed for 2009
 Construction Season

GRAPHICAL REPRESENTATION OF TRAFFIC MODEL INPUT AND OUTPUT
SUNDAY NORTHBOUND DIRECTION

