

USH 41/45: CTH Q TO STH 145 (WAUKESHA AND MILWAUKEE COUNTIES) NIGHTTIME CLOSURE NO DIVERSION ROUTE (MAX QUEUE METHOD)	OCTOBER
	Analyzed for 2009 Construction Season

SUMMARY OF TRAFFIC MODEL OUTPUT

SUNDAY SOUTHBOUND DIRECTION

TIME OF DAY	FLOWS AND CAPACITY IN VEH/HR						AVERAGE SPEEDS IN MPH			
	MAIN ROUTE		SITE CAPA CITY	FLOW		AV.DEL PER VEH (MINS)	AVERAGE QUEUE (VEH)	MAIN ROUTE		SITE
	DEMAND FLOW	PCT HEAVY		MAIN ROUTE	'DIVER TED'			WITHOUT WORK ZONE	WITH WORK ZONE	
MID-1 AM	661	0.0	3000	661	0	0.36	0	69.9	64.1	49.7
1-2 AM	396	0.0	3000	396	0	0.36	0	70.2	64.3	49.7
2-3 AM	299	0.0	3000	299	0	0.36	0	70.2	64.3	49.7
3-4 AM	213	0.0	3000	213	0	0.36	0	70.2	64.3	49.7
4-5 AM	217	0.0	3000	217	0	0.36	0	70.2	64.3	49.7
5-6 AM	374	0.0	3000	374	0	0.36	0	70.2	64.3	49.7
6-7 AM	640	0.0	3000	640	0	0.36	0	69.9	64.1	49.7
7-8 AM	916	0.0	3000	916	0	0.35	0	69.6	63.9	49.7
8-9 AM	1271	0.0	3000	1271	0	0.35	0	69.2	63.7	49.7
9-10 AM	2080	0.0	OFF	2080	0	0.00	0	68.1	68.1	68.1
10-11 AM	2676	0.0	OFF	2676	0	0.00	0	67.4	67.4	67.4
11AM-NOON	3255	0.0	OFF	3255	0	0.00	0	66.7	66.7	66.7
NOON-1PM	3540	0.0	OFF	3540	0	0.00	0	66.3	66.3	66.3
1-2 PM	3537	0.0	OFF	3537	0	0.00	0	66.3	66.3	66.3
2-3 PM	3680	0.0	OFF	3680	0	0.00	0	65.7	65.7	65.7
3-4 PM	3785	0.0	OFF	3785	0	0.00	0	65.0	65.0	65.0
4-5 PM	3892	0.0	OFF	3892	0	0.00	0	64.3	64.3	64.3
5-6 PM	3716	0.0	OFF	3716	0	0.00	0	65.5	65.5	65.5
6-7 PM	3354	0.0	OFF	3354	0	0.00	0	66.6	66.6	66.6
7-8 PM	2636	0.0	3000	2636	0	0.49	0	67.4	60.2	43.8
8-9 PM	1828	0.0	3000	1828	0	0.34	0	68.4	63.2	49.7
9-10 PM	1289	0.0	3000	1289	0	0.35	0	69.1	63.6	49.7
10-11 PM	856	0.0	3000	856	0	0.35	0	69.7	64.0	49.7
11PM-MID	509	0.0	3000	509	0	0.36	0	70.1	64.3	49.7

"OFF" INDICATES NO ROAD WORK (ALL LANES OPEN TO TRAFFIC)

----- SITE BREAKDOWN DELAYS -----	
BREAKDOWN DURATION (MINS)	0
RANGE OF QUEUE DELAY - MIN (VEH-H) MAX	0.0
AV BREAKDOWNS PER DAY	0.00
AV QUEUE DELAY/DAY (VEH-H)	0.0
AV TOTAL DELAY/DAY (VEH-H)	0.0

----- SITE ACCIDENT DELAYS -----	
BREAKDOWN DURATION (MINS)	0
RANGE OF QUEUE DELAY - MIN (VEH-H) MAX	0
AV BREAKDOWNS PER DAY	0
AV QUEUE DELAY/DAY (VEH-H)	0
AV TOTAL DELAY/DAY (VEH-H)	0

AVERAGE ACCIDENT NUMBERS (PIA/DAY)	
MAIN ROUTE WITHOUT WORKS	0.0334
MAIN ROUTE WITH WORKS	0.0326
'DIVERSION'	0.0000
<small>PIA: Personal Injury Accidents</small>	
IMPACTS ON ROAD USERS	
ROAD USER COSTS PER DAY	\$1,050
CONGESTED HOURS PER DAY*	0

*Delays Exceeding User-Specified Maximum

USH 41/45: CTH Q TO STH 145 (WAUKESHA AND MILWAUKEE COUNTIES)
NIGHTTIME CLOSURE
NO DIVERSION ROUTE (MAX QUEUE METHOD)

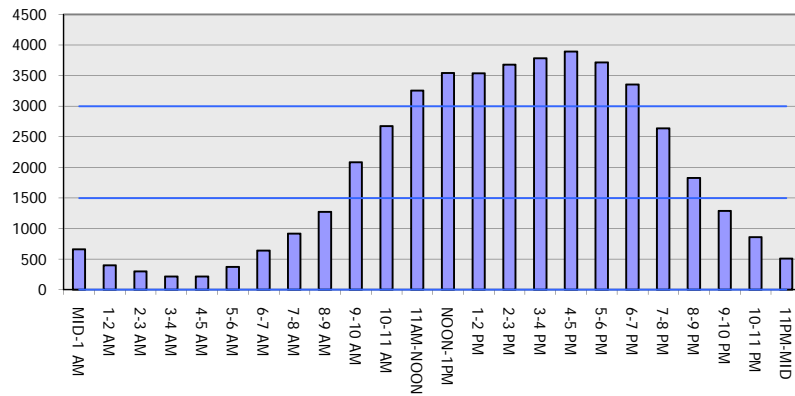
OCTOBER

Analyzed for 2009
 Construction Season

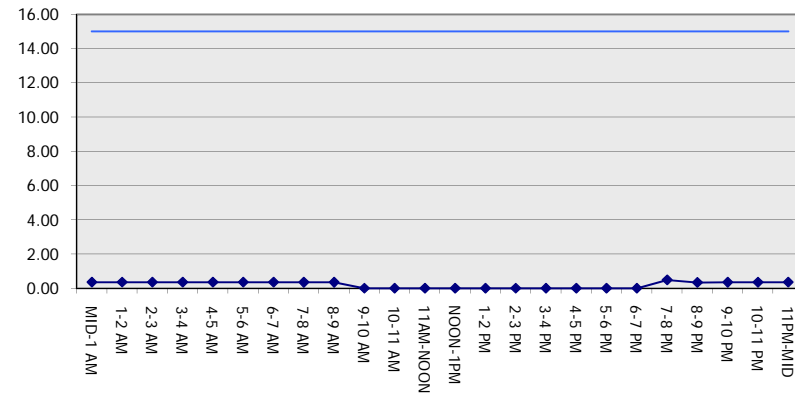
GRAPHICAL REPRESENTATION OF TRAFFIC MODEL INPUT AND OUTPUT

SUNDAY SOUTHBOUND DIRECTION

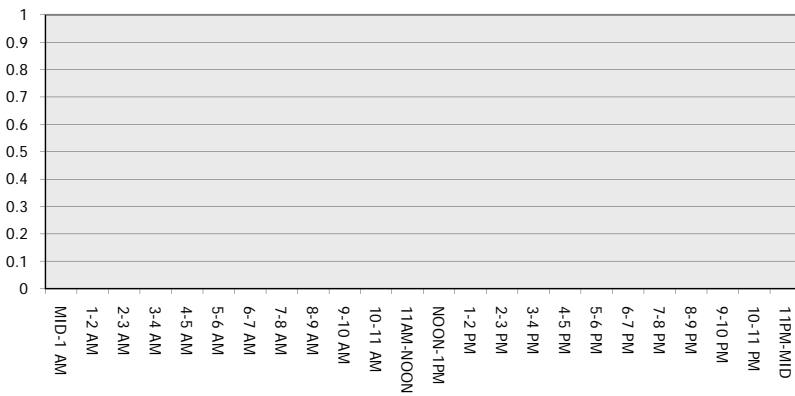
Main Route - Traffic Demand (Vehicles Per Hour)



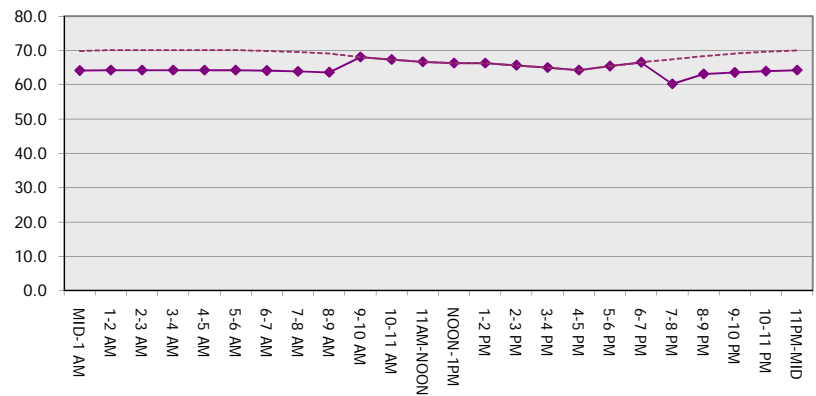
Main Route Average Delay Per Vehicle (Minutes)



Main Route - Average Queue Length (Vehicles)



Main Route - Average Speed (MPH)



USH 41/45: CTH Q TO STH 145 (WAUKESHA AND MILWAUKEE COUNTIES) NIGHTTIME CLOSURE NO DIVERSION ROUTE (MAX QUEUE METHOD)	OCTOBER
	Analyzed for 2009 Construction Season

SUMMARY OF TRAFFIC MODEL OUTPUT

SUNDAY NORTHBOUND DIRECTION

TIME OF DAY	FLOWS AND CAPACITY IN VEH/HR						AVERAGE SPEEDS IN MPH			
	MAIN ROUTE		SITE CAPA CITY	FLOW		AV.DEL PER VEH (MINS)	AVERAGE QUEUE (VEH)	MAIN ROUTE		SITE
	DEMAND FLOW	PCT HEAVY		MAIN ROUTE	'DIVER TED'			WITHOUT WORK ZONE	WITH WORK ZONE	
MID-1 AM	714	0.0	3000	714	0	0.36	0	69.9	64.1	49.7
1-2 AM	415	0.0	3000	415	0	0.36	0	70.2	64.3	49.7
2-3 AM	367	0.0	3000	367	0	0.36	0	70.2	64.3	49.7
3-4 AM	245	0.0	3000	245	0	0.36	0	70.2	64.3	49.7
4-5 AM	231	0.0	3000	231	0	0.36	0	70.2	64.3	49.7
5-6 AM	442	0.0	3000	442	0	0.36	0	70.2	64.3	49.7
6-7 AM	563	0.0	3000	563	0	0.36	0	70.0	64.2	49.7
7-8 AM	932	0.0	3000	932	0	0.35	0	69.6	63.9	49.7
8-9 AM	1345	0.0	3000	1345	0	0.35	0	69.1	63.6	49.7
9-10 AM	1909	0.0	OFF	1909	0	0.00	0	68.4	68.4	68.4
10-11 AM	2502	0.0	OFF	2502	0	0.00	0	67.6	67.6	67.6
11AM-NOON	3035	0.0	OFF	3035	0	0.00	0	66.9	66.9	66.9
NOON-1PM	3286	0.0	OFF	3286	0	0.00	0	66.6	66.6	66.6
1-2 PM	3229	0.0	OFF	3229	0	0.00	0	66.7	66.7	66.7
2-3 PM	2986	0.0	OFF	2986	0	0.00	0	67.0	67.0	67.0
3-4 PM	3203	0.0	OFF	3203	0	0.00	0	66.8	66.8	66.8
4-5 PM	3058	0.0	OFF	3058	0	0.00	0	66.9	66.9	66.9
5-6 PM	2647	0.0	OFF	2647	0	0.00	0	67.4	67.4	67.4
6-7 PM	2313	0.0	OFF	2313	0	0.00	0	67.9	67.9	67.9
7-8 PM	1789	0.0	3000	1789	0	0.34	0	68.5	63.2	49.7
8-9 PM	1285	0.0	3000	1285	0	0.35	0	69.1	63.6	49.7
9-10 PM	1073	0.0	3000	1073	0	0.35	0	69.4	63.8	49.7
10-11 PM	904	0.0	3000	904	0	0.35	0	69.6	63.9	49.7
11PM-MID	548	0.0	3000	548	0	0.36	0	70.0	64.2	49.7

"OFF" INDICATES NO ROAD WORK (ALL LANES OPEN TO TRAFFIC)

----- SITE BREAKDOWN DELAYS -----	
BREAKDOWN DURATION (MINS)	0
RANGE OF QUEUE DELAY - MIN (VEH-H) MAX	0.0
AV BREAKDOWNS PER DAY	0.00
AV QUEUE DELAY/DAY (VEH-H)	0.0
AV TOTAL DELAY/DAY (VEH-H)	0.0

----- SITE ACCIDENT DELAYS -----	
BREAKDOWN DURATION (MINS)	0
RANGE OF QUEUE DELAY - MIN (VEH-H) MAX	0
AV BREAKDOWNS PER DAY	0
AV QUEUE DELAY/DAY (VEH-H)	0
AV TOTAL DELAY/DAY (VEH-H)	0

AVERAGE ACCIDENT NUMBERS (PIA/DAY)	
MAIN ROUTE WITHOUT WORKS	0.0286
MAIN ROUTE WITH WORKS	0.0278
'DIVERSION'	0.0000

PIA: Personal Injury Accidents

ECONOMIC IMPACT ON ROAD USERS	
ROAD USER COSTS PER DAY	\$867
CONGESTED HOURS PER DAY*	0

*Delays Exceeding User-Specified Maximum

USH 41/45: CTH Q TO STH 145 (WAUKESHA AND MILWAUKEE COUNTIES)
NIGHTTIME CLOSURE
NO DIVERSION ROUTE (MAX QUEUE METHOD)

OCTOBER

Analyzed for 2009
 Construction Season

GRAPHICAL REPRESENTATION OF TRAFFIC MODEL INPUT AND OUTPUT
SUNDAY NORTHBOUND DIRECTION

