

USH 41/45: CTH Q TO STH 145 (WAUKESHA AND MILWAUKEE COUNTIES) NIGHTTIME CLOSURE NO DIVERSION ROUTE (MAX QUEUE METHOD)	OCTOBER
	Analyzed for 2009 Construction Season

SUMMARY OF TRAFFIC MODEL OUTPUT

SATURDAY SOUTHBOUND DIRECTION

TIME OF DAY	FLOWS AND CAPACITY IN VEH/HR							AVERAGE SPEEDS IN MPH			
	MAIN ROUTE		SITE CAPA CITY	FLOW		AV.DEL PER VEH (MINS)	AVERAGE QUEUE (VEH)	MAIN ROUTE		SITE	
	DEMAND FLOW	PCT HEAVY		MAIN ROUTE	'DIVER TED'			WITHOUT WORK ZONE	WITH WORK ZONE		
MID-1 AM	616	0.0	3000	616	0	0.36	0	70.0	64.1	49.7	
1-2 AM	338	0.0	3000	338	0	0.36	0	70.2	64.3	49.7	
2-3 AM	265	0.0	3000	265	0	0.36	0	70.2	64.3	49.7	
3-4 AM	286	0.0	3000	286	0	0.36	0	70.2	64.3	49.7	
4-5 AM	404	0.0	3000	404	0	0.36	0	70.2	64.3	49.7	
5-6 AM	831	0.0	3000	831	0	0.35	0	69.7	64.0	49.7	
6-7 AM	1289	0.0	3000	1289	0	0.35	0	69.1	63.6	49.7	
7-8 AM	1784	0.0	3000	1784	0	0.34	0	68.5	63.2	49.7	
8-9 AM	2305	0.0	OFF	2305	0	0.00	0	67.9	67.9	67.9	
9-10 AM	2812	0.0	OFF	2812	0	0.00	0	67.3	67.3	67.3	
10-11 AM	3164	0.0	OFF	3164	0	0.00	0	66.8	66.8	66.8	
11AM-NOON	3439	0.0	OFF	3439	0	0.00	0	66.4	66.4	66.4	
NOON-1PM	3500	0.0	OFF	3500	0	0.00	0	66.4	66.4	66.4	
1-2 PM	3354	0.0	OFF	3354	0	0.00	0	66.6	66.6	66.6	
2-3 PM	3411	0.0	OFF	3411	0	0.00	0	66.5	66.5	66.5	
3-4 PM	3371	0.0	OFF	3371	0	0.00	0	66.6	66.6	66.6	
4-5 PM	3448	0.0	OFF	3448	0	0.00	0	66.4	66.4	66.4	
5-6 PM	3275	0.0	OFF	3275	0	0.00	0	66.6	66.6	66.6	
6-7 PM	2934	0.0	2999	2934	0	0.83	9	67.1	55.8	38.8	
7-8 PM	2291	0.0	3000	2291	0	0.33	0	67.9	62.8	49.7	
8-9 PM	1838	0.0	3000	1838	0	0.34	0	68.4	63.2	49.7	
9-10 PM	1734	0.0	3000	1734	0	0.34	0	68.6	63.2	49.7	
10-11 PM	1311	0.0	3000	1311	0	0.35	0	69.1	63.6	49.7	
11PM-MID	1018	0.0	3000	1018	0	0.35	0	69.5	63.8	49.7	

"OFF" INDICATES NO ROAD WORK (ALL LANES OPEN TO TRAFFIC)

----- SITE BREAKDOWN DELAYS -----	
BREAKDOWN DURATION (MINS)	0
RANGE OF QUEUE DELAY - MIN	0.0
(VEH-H) MAX	0.0
AV BREAKDOWNS PER DAY	0.00
AV QUEUE DELAY/DAY (VEH-H)	0.0
AV TOTAL DELAY/DAY (VEH-H)	0.0

----- SITE ACCIDENT DELAYS -----	
BREAKDOWN DURATION (MINS)	0
RANGE OF QUEUE DELAY - MIN	0
(VEH-H) MAX	0
AV BREAKDOWNS PER DAY	0
AV QUEUE DELAY/DAY (VEH-H)	0
AV TOTAL DELAY/DAY (VEH-H)	0

AVERAGE ACCIDENT NUMBERS (PIA/DAY)	
MAIN ROUTE WITHOUT WORKS	0.0359
MAIN ROUTE WITH WORKS	0.0348
'DIVERSION'	0.0000
<small>PIA: Personal Injury Accidents</small>	
IMPACTS ON ROAD USERS	
ROAD USER COSTS PER DAY	\$1,661
CONGESTED HOURS PER DAY*	0

*Delays Exceeding User-Specified Maximum

USH 41/45: CTH Q TO STH 145 (WAUKESHA AND MILWAUKEE COUNTIES)
NIGHTTIME CLOSURE
NO DIVERSION ROUTE (MAX QUEUE METHOD)

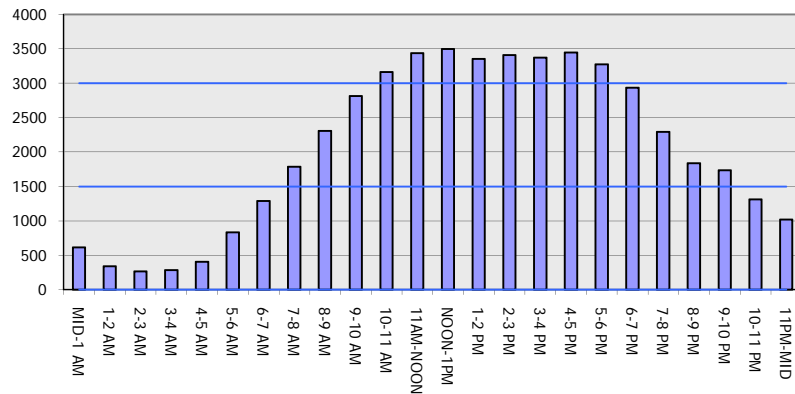
OCTOBER

Analyzed for 2009
 Construction Season

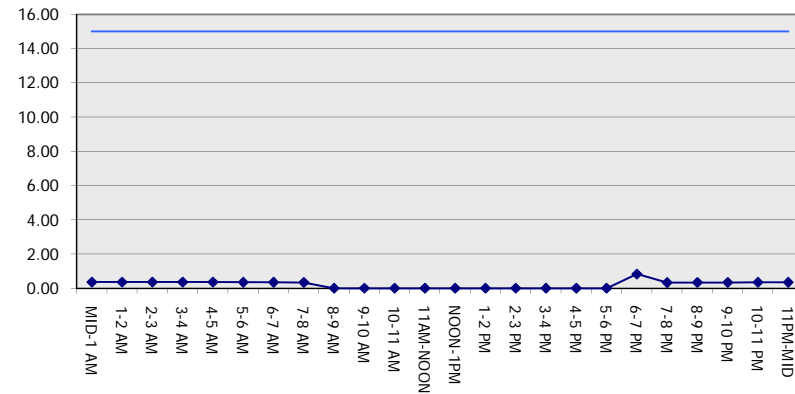
GRAPHICAL REPRESENTATION OF TRAFFIC MODEL INPUT AND OUTPUT

SATURDAY SOUTHBOUND DIRECTION

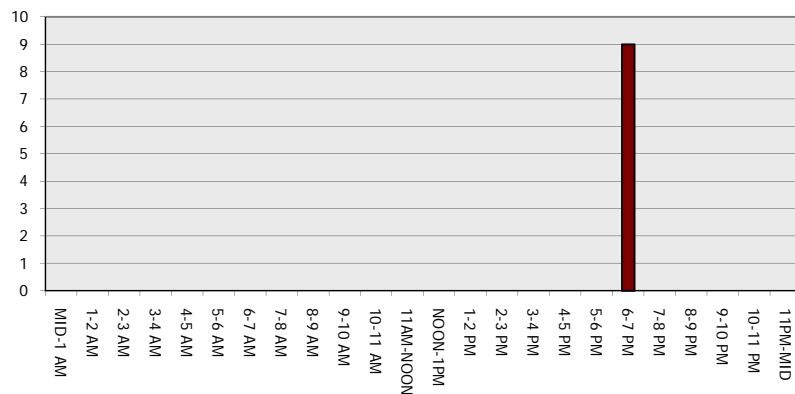
Main Route - Traffic Demand (Vehicles Per Hour)



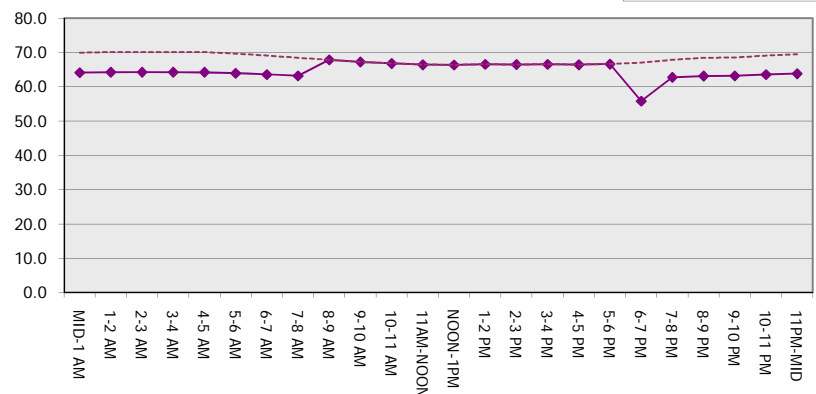
Main Route Average Delay Per Vehicle (Minutes)



Main Route - Average Queue Length (Vehicles)



Main Route - Average Speed (MPH)



USH 41/45: CTH Q TO STH 145 (WAUKESHA AND MILWAUKEE COUNTIES) NIGHTTIME CLOSURE NO DIVERSION ROUTE (MAX QUEUE METHOD)	OCTOBER
	Analyzed for 2009 Construction Season

SUMMARY OF TRAFFIC MODEL OUTPUT

SATURDAY NORTHBOUND DIRECTION

TIME OF DAY	FLOWS AND CAPACITY IN VEH/HR							AVERAGE SPEEDS IN MPH		
	MAIN ROUTE		SITE CAPA CITY	FLOW		AV.DEL PER VEH (MINS)	AVERAGE QUEUE (VEH)	MAIN ROUTE		SITE
	DEMAND FLOW	PCT HEAVY		MAIN ROUTE	'DIVER TED'			WITHOUT WORK ZONE	WITH WORK ZONE	
MID-1 AM	702	0.0	3000	702	0	0.36	0	69.9	64.1	49.7
1-2 AM	445	0.0	3000	445	0	0.36	0	70.2	64.3	49.7
2-3 AM	359	0.0	3000	359	0	0.36	0	70.2	64.3	49.7
3-4 AM	298	0.0	3000	298	0	0.36	0	70.2	64.3	49.7
4-5 AM	469	0.0	3000	469	0	0.36	0	70.2	64.3	49.7
5-6 AM	828	0.0	3000	828	0	0.35	0	69.7	64.0	49.7
6-7 AM	1263	0.0	3000	1263	0	0.35	0	69.2	63.7	49.7
7-8 AM	1729	0.0	3000	1729	0	0.34	0	68.6	63.3	49.7
8-9 AM	2348	0.0	OFF	2348	0	0.00	0	67.8	67.8	67.8
9-10 AM	2822	0.0	OFF	2822	0	0.00	0	67.3	67.3	67.3
10-11 AM	3270	0.0	OFF	3270	0	0.00	0	66.7	66.7	66.7
11AM-NOON	3548	0.0	OFF	3548	0	0.00	0	66.3	66.3	66.3
NOON-1PM	3646	0.0	OFF	3646	0	0.00	0	66.0	66.0	66.0
1-2 PM	3627	0.0	OFF	3627	0	0.00	0	66.1	66.1	66.1
2-3 PM	3565	0.0	OFF	3565	0	0.00	0	66.3	66.3	66.3
3-4 PM	3670	0.0	OFF	3670	0	0.00	0	65.8	65.8	65.8
4-5 PM	3433	0.0	OFF	3433	0	0.00	0	66.4	66.4	66.4
5-6 PM	3076	0.0	OFF	3076	0	0.00	0	66.9	66.9	66.9
6-7 PM	2675	0.0	3000	2675	0	0.52	0	67.4	59.9	43.0
7-8 PM	2155	0.0	3000	2155	0	0.33	0	68.1	62.9	49.7
8-9 PM	1856	0.0	3000	1856	0	0.34	0	68.4	63.2	49.7
9-10 PM	1716	0.0	3000	1716	0	0.34	0	68.6	63.3	49.7
10-11 PM	1437	0.0	3000	1437	0	0.34	0	68.9	63.5	49.7
11PM-MID	1052	0.0	3000	1052	0	0.35	0	69.4	63.8	49.7

"OFF" INDICATES NO ROAD WORK (ALL LANES OPEN TO TRAFFIC)

----- SITE BREAKDOWN DELAYS -----	
BREAKDOWN DURATION (MINS)	0
RANGE OF QUEUE DELAY - MIN (VEH-H) MAX	0.0
AV BREAKDOWNS PER DAY	0.00
AV QUEUE DELAY/DAY (VEH-H)	0.0
AV TOTAL DELAY/DAY (VEH-H)	0.0

----- SITE ACCIDENT DELAYS -----	
BREAKDOWN DURATION (MINS)	0
RANGE OF QUEUE DELAY - MIN (VEH-H) MAX	0
AV BREAKDOWNS PER DAY	0
AV QUEUE DELAY/DAY (VEH-H)	0
AV TOTAL DELAY/DAY (VEH-H)	0

AVERAGE ACCIDENT NUMBERS (PIA/DAY)	
MAIN ROUTE WITHOUT WORKS	0.0366
MAIN ROUTE WITH WORKS	0.0355
'DIVERSION'	0.0000

PIA: Personal Injury Accidents

ECONOMIC IMPACT ON ROAD USERS	
ROAD USER COSTS PER DAY	\$1,445
CONGESTED HOURS PER DAY*	0

*Delays Exceeding User-Specified Maximum

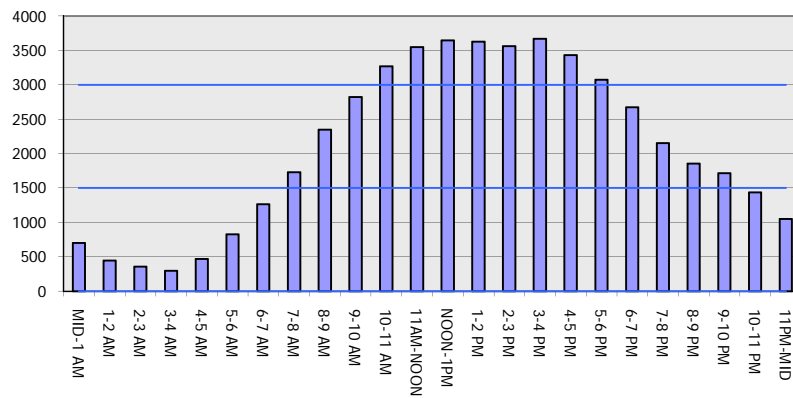
USH 41/45: CTH Q TO STH 145 (WAUKESHA AND MILWAUKEE COUNTIES)
NIGHTTIME CLOSURE
NO DIVERSION ROUTE (MAX QUEUE METHOD)

OCTOBER

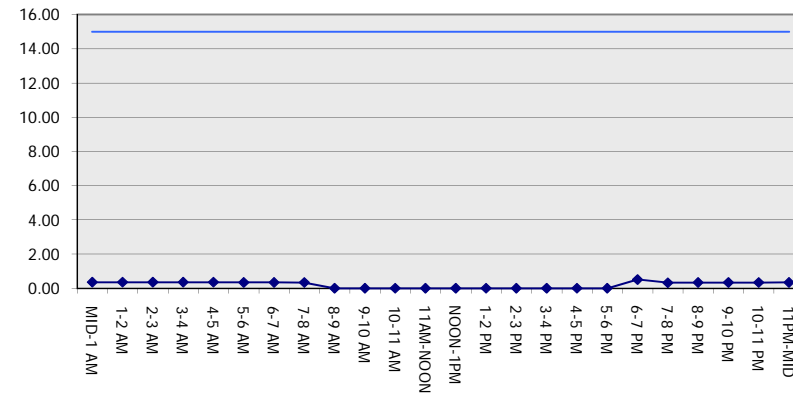
Analyzed for 2009
 Construction Season

GRAPHICAL REPRESENTATION OF TRAFFIC MODEL INPUT AND OUTPUT
SATURDAY NORTHBOUND DIRECTION

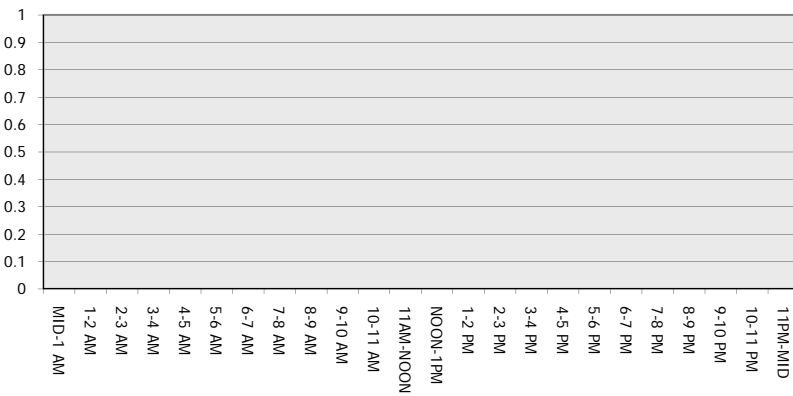
Main Route - Traffic Demand (Vehicles Per Hour)



Main Route Average Delay Per Vehicle (Minutes)



Main Route - Average Queue Length (Vehicles)



Main Route - Average Speed (MPH)

