

USH 41/45: CTH Q TO STH 145 (WAUKESHA AND MILWAUKEE COUNTIES) NIGHTTIME 2 LANE CLOSURE NO DIVERSION ROUTE (MAX QUEUE METHOD)	OCTOBER
	Analyzed for 2009 Construction Season

SUMMARY OF TRAFFIC MODEL OUTPUT

MON-THUR SOUTHBOUND DIRECTION

TIME OF DAY	FLOWS AND CAPACITY IN VEH/HR						AVERAGE SPEEDS IN MPH			
	MAIN ROUTE		SITE CAPA CITY	FLOW		AV.DEL PER VEH (MINS)	AVERAGE QUEUE (VEH)	MAIN ROUTE		SITE
	DEMAND FLOW	PCT HEAVY		MAIN ROUTE	'DIVER TED'			WITHOUT WORK ZONE	WITH WORK ZONE	
MID-1 AM	371	0.0	1500	371	0	0.52	0	70.2	62.0	44.0
1-2 AM	260	0.0	1500	260	0	0.50	0	70.2	62.2	44.5
2-3 AM	275	0.0	1500	275	0	0.51	0	70.2	62.2	44.4
3-4 AM	411	0.0	1500	411	0	0.52	0	70.2	61.9	43.8
4-5 AM	859	0.0	1500	859	0	0.57	0	69.7	60.9	42.2
5-6 AM	2985	0.0	OFF	2985	0	0.00	0	67.0	67.0	67.0
6-7 AM	6126	0.0	OFF	6126	0	0.00	0	49.0	49.0	49.0
7-8 AM	6548	0.0	OFF	6548	0	0.00	0	46.1	46.1	46.1
8-9 AM	4403	0.0	OFF	4403	0	0.00	0	60.8	60.8	60.8
9-10 AM	3159	0.0	OFF	3159	0	0.00	0	66.8	66.8	66.8
10-11 AM	2884	0.0	OFF	2884	0	0.00	0	67.1	67.1	67.1
11AM-NOON	2972	0.0	OFF	2972	0	0.00	0	67.1	67.1	67.1
NOON-1PM	3113	0.0	OFF	3113	0	0.00	0	66.9	66.9	66.9
1-2 PM	3162	0.0	OFF	3162	0	0.00	0	66.8	66.8	66.8
2-3 PM	3658	0.0	OFF	3658	0	0.00	0	65.9	65.9	65.9
3-4 PM	4007	0.0	OFF	4007	0	0.00	0	63.5	63.5	63.5
4-5 PM	3937	0.0	OFF	3937	0	0.00	0	64.0	64.0	64.0
5-6 PM	3395	0.0	OFF	3395	0	0.00	0	66.5	66.5	66.5
6-7 PM	2625	0.0	OFF	2625	0	0.00	0	67.4	67.4	67.4
7-8 PM	1871	0.0	1499	1871	0	8.53	219	68.4	22.0	30.8
8-9 PM	1529	0.0	1499	1515	14	16.12+	393	68.8	13.7	30.8
9-10 PM	1340	0.0	1499	1340	0	13.20	321	69.1	16.0	30.8
10-11 PM	1042	0.0	1499	1042	0	2.25	65	69.4	44.3	38.6
11PM-MID	771	0.0	1500	771	0	0.56	0	69.8	61.1	42.5

"OFF" INDICATES NO ROAD WORK (ALL LANES OPEN TO TRAFFIC)

+ INDICATES QUEUEING EXCEEDS USER-SPECIFIED MAXIMUM LIMIT

----- SITE BREAKDOWN DELAYS -----	
BREAKDOWN DURATION (MINS)	0
RANGE OF QUEUE DELAY - MIN (VEH-H) MAX	0.0
AV BREAKDOWNS PER DAY	0.00
AV QUEUE DELAY/DAY (VEH-H)	0.0
AV TOTAL DELAY/DAY (VEH-H)	0.0

----- SITE ACCIDENT DELAYS -----	
BREAKDOWN DURATION (MINS)	0
RANGE OF QUEUE DELAY - MIN (VEH-H) MAX	0
AV BREAKDOWNS PER DAY	0
AV QUEUE DELAY/DAY (VEH-H)	0
AV TOTAL DELAY/DAY (VEH-H)	0

AVERAGE ACCIDENT NUMBERS (PIA/DAY)	
MAIN ROUTE WITHOUT WORKS	0.0452
MAIN ROUTE WITH WORKS	0.0446
'DIVERSION'	0.0000
<small>PIA: Personal Injury Accidents</small>	
IMPACTS ON ROAD USERS	
ROAD USER COSTS PER DAY	\$14,457
CONGESTED HOURS PER DAY*	1

*Delays Exceeding User-Specified Maximum

**USH 41/45: CTH Q TO STH 145 (WAUKESHA AND MILWAUKEE COUNTIES)
 NIGHTTIME 2 LANE CLOSURE
 NO DIVERSION ROUTE (MAX QUEUE METHOD)**

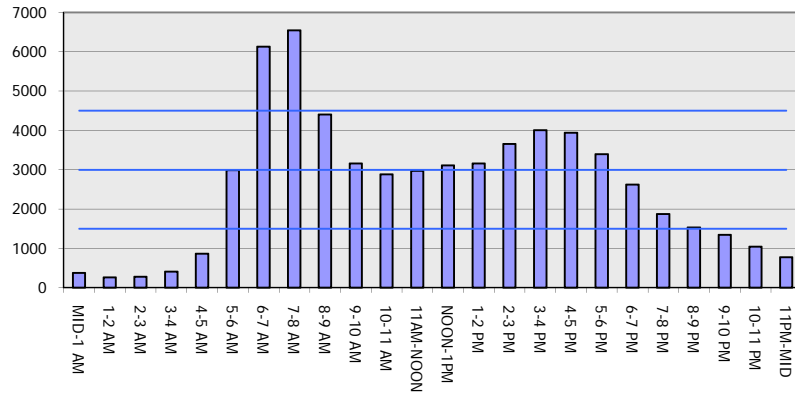
OCTOBER

Analyzed for 2009
 Construction Season

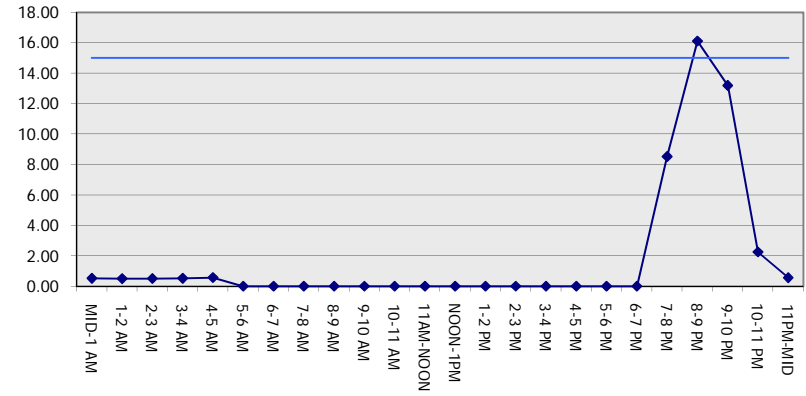
GRAPHICAL REPRESENTATION OF TRAFFIC MODEL INPUT AND OUTPUT

MON-THUR SOUTHBOUND DIRECTION

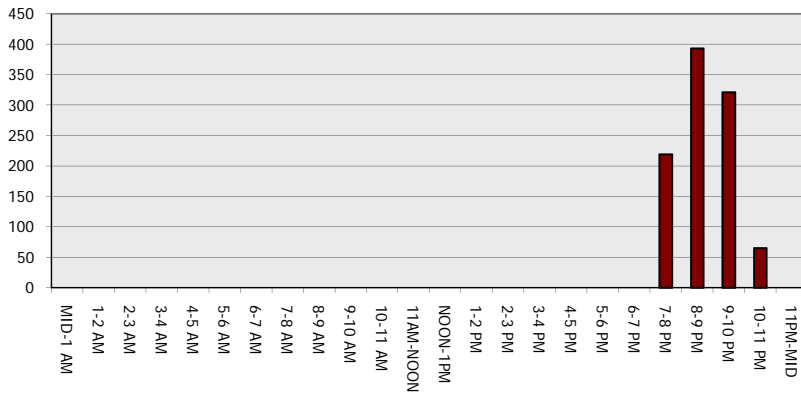
Main Route - Traffic Demand (Vehicles Per Hour)



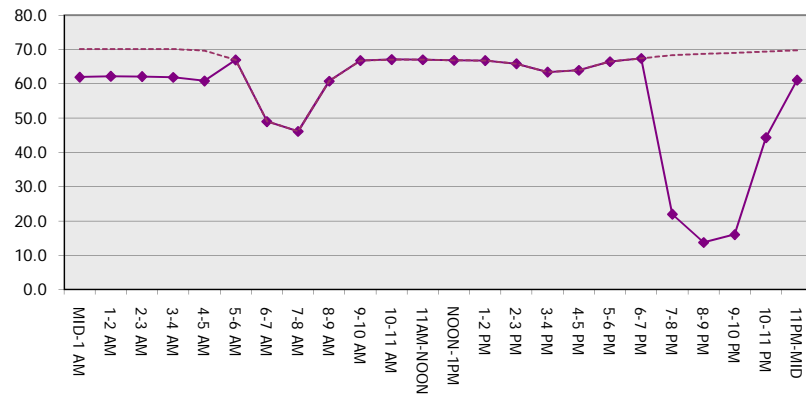
Main Route Average Delay Per Vehicle (Minutes)



Main Route - Average Queue Length (Vehicles)



Main Route - Average Speed (MPH)



USH 41/45: CTH Q TO STH 145 (WAUKESHA AND MILWAUKEE COUNTIES) NIGHTTIME 2 LANE CLOSURE NO DIVERSION ROUTE (MAX QUEUE METHOD)	OCTOBER
	Analyzed for 2009 Construction Season

SUMMARY OF TRAFFIC MODEL OUTPUT

MON-THUR NORTHBOUND DIRECTION

TIME OF DAY	FLOWS AND CAPACITY IN VEH/HR							AVERAGE SPEEDS IN MPH		
	MAIN ROUTE		SITE CAPA CITY	FLOW		AV.DEL PER VEH (MINS)	AVERAGE QUEUE (VEH)	MAIN ROUTE		SITE
	DEMAND FLOW	PCT HEAVY		MAIN ROUTE	'DIVER TED'			WITHOUT WORK ZONE	WITH WORK ZONE	
MID-1 AM	394	0.0	1500	394	0	0.52	0	70.2	62.0	43.9
1-2 AM	276	0.0	1500	276	0	0.51	0	70.2	62.2	44.4
2-3 AM	270	0.0	1500	270	0	0.51	0	70.2	62.2	44.4
3-4 AM	305	0.0	1500	305	0	0.51	0	70.2	62.1	44.3
4-5 AM	695	0.0	1500	695	0	0.55	0	69.9	61.3	42.8
5-6 AM	1795	0.0	OFF	1795	0	0.00	0	68.5	68.5	68.5
6-7 AM	3106	0.0	OFF	3106	0	0.00	0	66.9	66.9	66.9
7-8 AM	3154	0.0	OFF	3154	0	0.00	0	66.8	66.8	66.8
8-9 AM	2827	0.0	OFF	2827	0	0.00	0	67.2	67.2	67.2
9-10 AM	2457	0.0	OFF	2457	0	0.00	0	67.7	67.7	67.7
10-11 AM	2596	0.0	OFF	2596	0	0.00	0	67.5	67.5	67.5
11AM-NOON	2863	0.0	OFF	2863	0	0.00	0	67.2	67.2	67.2
NOON-1PM	3003	0.0	OFF	3003	0	0.00	0	67.0	67.0	67.0
1-2 PM	3199	0.0	OFF	3199	0	0.00	0	66.8	66.8	66.8
2-3 PM	4383	0.0	OFF	4383	0	0.00	0	60.9	60.9	60.9
3-4 PM	5620	0.0	OFF	5620	0	0.00	0	52.5	52.5	52.5
4-5 PM	6566	0.0	OFF	6566	0	0.00	0	46.0	46.0	46.0
5-6 PM	5969	0.0	OFF	5969	0	0.00	0	50.1	50.1	50.1
6-7 PM	3499	0.0	OFF	3499	0	0.00	0	66.4	66.4	66.4
7-8 PM	2251	0.0	1499	1920	331	12.57+	314	67.9	16.6	30.9
8-9 PM	1851	0.0	1499	1500	351	16.35+	399	68.4	13.5	30.8
9-10 PM	1613	0.0	1500	1468	145	16.23+	396	68.7	13.6	30.8
10-11 PM	1245	0.0	1499	1245	0	11.47	287	69.2	17.8	31.8
11PM-MID	761	0.0	1500	761	0	0.91	14	69.8	56.8	42.5

"OFF" INDICATES NO ROAD WORK (ALL LANES OPEN TO TRAFFIC)

+ INDICATES QUEUEING EXCEEDS USER-SPECIFIED MAXIMUM LIMIT

----- SITE BREAKDOWN DELAYS -----	
BREAKDOWN DURATION (MINS)	0
RANGE OF QUEUE DELAY - MIN (VEH-H) MAX	0.0
AV BREAKDOWNS PER DAY	0.00
AV QUEUE DELAY/DAY (VEH-H)	0.0
AV TOTAL DELAY/DAY (VEH-H)	0.0

----- SITE ACCIDENT DELAYS -----	
BREAKDOWN DURATION (MINS)	0
RANGE OF QUEUE DELAY - MIN (VEH-H) MAX	0
AV BREAKDOWNS PER DAY	0
AV QUEUE DELAY/DAY (VEH-H)	0
AV TOTAL DELAY/DAY (VEH-H)	0

AVERAGE ACCIDENT NUMBERS (PIA/DAY)	
MAIN ROUTE WITHOUT WORKS	0.0444
MAIN ROUTE WITH WORKS	0.0432
'DIVERSION'	0.0014

PIA: Personal Injury Accidents

ECONOMIC IMPACT ON ROAD USERS	
ROAD USER COSTS PER DAY	\$23,399
CONGESTED HOURS PER DAY*	3

*Delays Exceeding User-Specified Maximum

USH 41/45: CTH Q TO STH 145 (WAUKESHA AND MILWAUKEE COUNTIES)
NIGHTTIME 2 LANE CLOSURE
NO DIVERSION ROUTE (MAX QUEUE METHOD)

OCTOBER

Analyzed for 2009
 Construction Season

GRAPHICAL REPRESENTATION OF TRAFFIC MODEL INPUT AND OUTPUT
MON-THUR NORTHBOUND DIRECTION

