

<b>USH 41/45: CTH Q TO STH 145 (WAUKESHA AND MILWAUKEE COUNTIES)</b> <b>NIGHTTIME 2 LANE CLOSURE</b> <b>NO DIVERSION ROUTE (MAX QUEUE METHOD)</b>	<b>MAY</b>
	Analyzed for 2009 Construction Season

**SUMMARY OF TRAFFIC MODEL OUTPUT**

MON-THUR                  SOUTHBOUND DIRECTION

TIME OF DAY	FLOWS AND CAPACITY IN VEH/HR						AVERAGE SPEEDS IN MPH				
	MAIN ROUTE		SITE CAPA CITY	FLOW		AV.DEL PER VEH (MINS)	AVERAGE QUEUE (VEH)	MAIN ROUTE		SITE	
	DEMAND FLOW	PCT HEAVY		MAIN ROUTE	'DIVER TED'			WITHOUT WORK ZONE	WITH WORK ZONE		
MID-1 AM	385	0.0	1500	385	0	0.52	0	70.2	62.0	44.0	
1-2 AM	243	0.0	1500	243	0	0.50	0	70.2	62.2	44.5	
2-3 AM	235	0.0	1500	235	0	0.50	0	70.2	62.2	44.5	
3-4 AM	381	0.0	1500	381	0	0.52	0	70.2	62.0	44.0	
4-5 AM	814	0.0	1500	814	0	0.57	0	69.7	61.0	42.4	
5-6 AM	2664	0.0	OFF	2664	0	0.00	0	67.4	67.4	67.4	
6-7 AM	5500	0.0	OFF	5500	0	0.00	0	53.3	53.3	53.3	
7-8 AM	6342	0.0	OFF	6342	0	0.00	0	47.5	47.5	47.5	
8-9 AM	4109	0.0	OFF	4109	0	0.00	0	62.8	62.8	62.8	
9-10 AM	3074	0.0	OFF	3074	0	0.00	0	66.9	66.9	66.9	
10-11 AM	2959	0.0	OFF	2959	0	0.00	0	67.1	67.1	67.1	
11AM-NOON	2988	0.0	OFF	2988	0	0.00	0	67.0	67.0	67.0	
NOON-1PM	3077	0.0	OFF	3077	0	0.00	0	66.9	66.9	66.9	
1-2 PM	3121	0.0	OFF	3121	0	0.00	0	66.9	66.9	66.9	
2-3 PM	3620	0.0	OFF	3620	0	0.00	0	66.1	66.1	66.1	
3-4 PM	3995	0.0	OFF	3995	0	0.00	0	63.6	63.6	63.6	
4-5 PM	3945	0.0	OFF	3945	0	0.00	0	63.9	63.9	63.9	
5-6 PM	3502	0.0	OFF	3502	0	0.00	0	66.4	66.4	66.4	
6-7 PM	2653	0.0	OFF	2653	0	0.00	0	67.4	67.4	67.4	
7-8 PM	1976	0.0	1499	1932	43	9.79+	260	68.2	19.9	30.8	
8-9 PM	1711	0.0	1500	1474	237	16.25+	397	68.6	13.6	30.8	
9-10 PM	1465	0.0	1499	1443	22	15.88+	387	68.9	13.8	30.8	
10-11 PM	1128	0.0	1499	1128	0	6.22	182	69.3	27.0	34.7	
11PM-MID	834	0.0	1500	834	0	0.57	0	69.7	60.9	42.3	

"OFF" INDICATES NO ROAD WORK (ALL LANES OPEN TO TRAFFIC)

+ INDICATES QUEUEING EXCEEDS USER-SPECIFIED MAXIMUM LIMIT

*----- SITE BREAKDOWN DELAYS -----*	
BREAKDOWN DURATION (MINS)	0
RANGE OF QUEUE DELAY - MIN (VEH-H) MAX	0.0
AV BREAKDOWNS PER DAY	0.00
AV QUEUE DELAY/DAY (VEH-H)	0.0
AV TOTAL DELAY/DAY (VEH-H)	0.0

*----- SITE ACCIDENT DELAYS -----*	
BREAKDOWN DURATION (MINS)	0
RANGE OF QUEUE DELAY - MIN (VEH-H) MAX	0
AV BREAKDOWNS PER DAY	0
AV QUEUE DELAY/DAY (VEH-H)	0
AV TOTAL DELAY/DAY (VEH-H)	0

AVERAGE ACCIDENT NUMBERS (PIA/DAY)	
MAIN ROUTE WITHOUT WORKS	0.0444
MAIN ROUTE WITH WORKS	0.0436
'DIVERSION'	0.0005
PIA: Personal Injury Accidents	
IMPACTS ON ROAD USERS	
ROAD USER COSTS PER DAY	\$18,540
CONGESTED HOURS PER DAY*	3

\*Delays Exceeding User-Specified Maximum

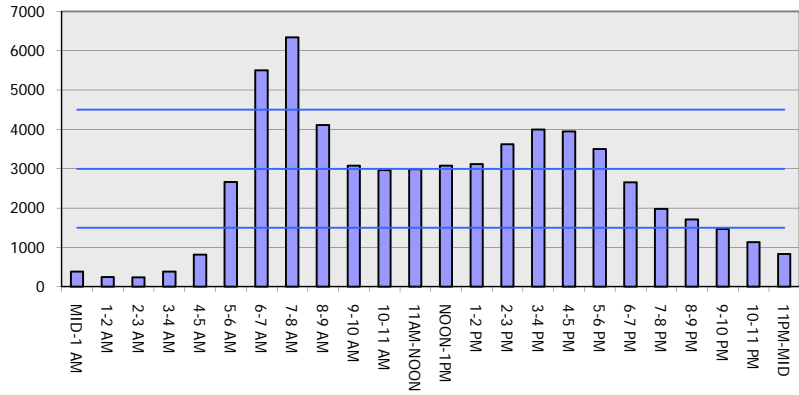
**USH 41/45: CTH Q TO STH 145 (WAUKESHA AND MILWAUKEE COUNTIES)**  
**NIGHTTIME 2 LANE CLOSURE**  
**NO DIVERSION ROUTE (MAX QUEUE METHOD)**

**MAY**  
 Analyzed for 2009  
 Construction Season

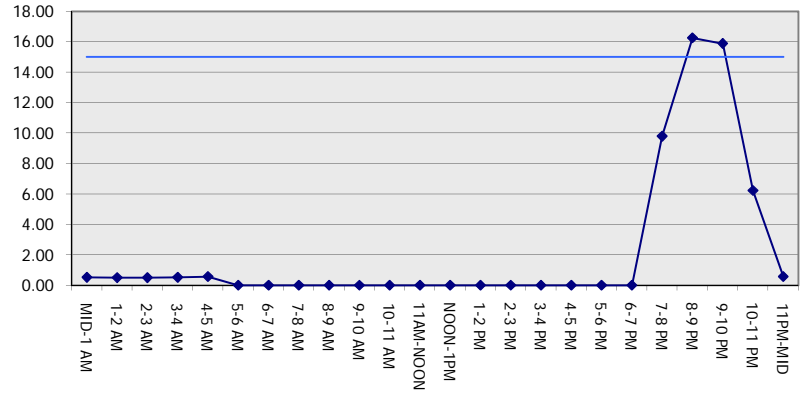
**GRAPHICAL REPRESENTATION OF TRAFFIC MODEL INPUT AND OUTPUT**

**MON-THUR SOUTHBOUND DIRECTION**

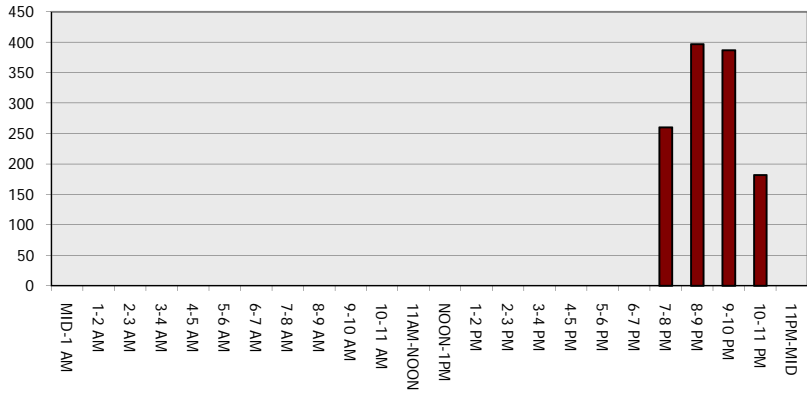
**Main Route - Traffic Demand (Vehicles Per Hour)**



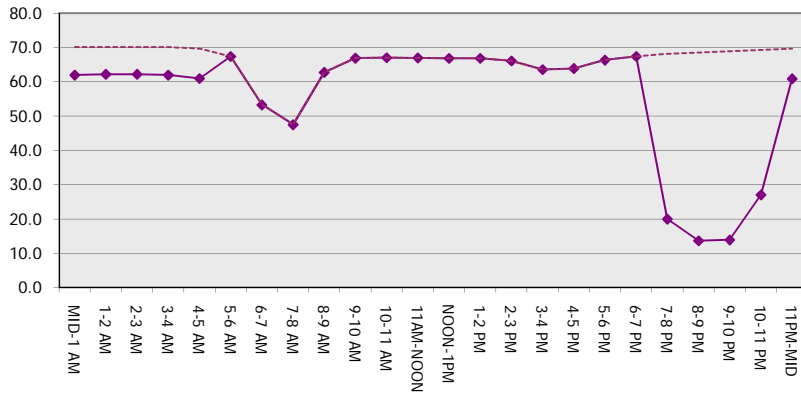
**Main Route Average Delay Per Vehicle (Minutes)**



**Main Route - Average Queue Length (Vehicles)**



**Main Route - Average Speed (MPH)**



<b>USH 41/45: CTH Q TO STH 145 (WAUKESHA AND MILWAUKEE COUNTIES)</b> <b>NIGHTTIME 2 LANE CLOSURE</b> <b>NO DIVERSION ROUTE (MAX QUEUE METHOD)</b>	<b>MAY</b>
	Analyzed for 2009 Construction Season

**SUMMARY OF TRAFFIC MODEL OUTPUT**

MON-THUR                      NORTHBOUND DIRECTION

TIME OF DAY	FLOWS AND CAPACITY IN VEH/HR						AVERAGE SPEEDS IN MPH			
	MAIN ROUTE		SITE CAPA CITY	FLOW		AV.DEL PER VEH (MINS)	AVERAGE QUEUE (VEH)	MAIN ROUTE		SITE
	DEMAND FLOW	PCT HEAVY		MAIN ROUTE	'DIVER TED'			WITHOUT WORK ZONE	WITH WORK ZONE	
MID-1 AM	408	0.0	1500	408	0	0.52	0	70.2	61.9	43.8
1-2 AM	275	0.0	1500	275	0	0.51	0	70.2	62.2	44.4
2-3 AM	242	0.0	1500	242	0	0.50	0	70.2	62.2	44.5
3-4 AM	294	0.0	1500	294	0	0.51	0	70.2	62.2	44.3
4-5 AM	615	0.0	1500	615	0	0.55	0	70.0	61.5	43.1
5-6 AM	1694	0.0	OFF	1694	0	0.00	0	68.6	68.6	68.6
6-7 AM	3052	0.0	OFF	3052	0	0.00	0	66.9	66.9	66.9
7-8 AM	3029	0.0	OFF	3029	0	0.00	0	66.9	66.9	66.9
8-9 AM	2765	0.0	OFF	2765	0	0.00	0	67.3	67.3	67.3
9-10 AM	2470	0.0	OFF	2470	0	0.00	0	67.7	67.7	67.7
10-11 AM	2546	0.0	OFF	2546	0	0.00	0	67.6	67.6	67.6
11AM-NOON	2867	0.0	OFF	2867	0	0.00	0	67.2	67.2	67.2
NOON-1PM	2988	0.0	OFF	2988	0	0.00	0	67.0	67.0	67.0
1-2 PM	3177	0.0	OFF	3177	0	0.00	0	66.8	66.8	66.8
2-3 PM	4257	0.0	OFF	4257	0	0.00	0	61.8	61.8	61.8
3-4 PM	5427	0.0	OFF	5427	0	0.00	0	53.8	53.8	53.8
4-5 PM	6262	0.0	OFF	6262	0	0.00	0	48.1	48.1	48.1
5-6 PM	5754	0.0	OFF	5754	0	0.00	0	51.5	51.5	51.5
6-7 PM	3248	0.0	OFF	3248	0	0.00	0	66.7	66.7	66.7
7-8 PM	2242	0.0	1499	1955	287	12.41+	313	67.9	16.8	30.8
8-9 PM	1904	0.0	1499	1475	429	16.25+	397	68.4	13.6	30.8
9-10 PM	1664	0.0	1499	1474	190	16.26+	397	68.7	13.6	30.8
10-11 PM	1404	0.0	1499	1392	12	15.27+	372	69.0	14.3	30.8
11PM-MID	799	0.0	1499	799	0	2.21	76	69.7	44.7	41.4

"OFF" INDICATES NO ROAD WORK (ALL LANES OPEN TO TRAFFIC)

+ INDICATES QUEUEING EXCEEDS USER-SPECIFIED MAXIMUM LIMIT

*----- SITE BREAKDOWN DELAYS -----*	
BREAKDOWN DURATION (MINS)	0
RANGE OF QUEUE DELAY - MIN (VEH-H) MAX	0.0
AV BREAKDOWNS PER DAY	0.00
AV QUEUE DELAY/DAY (VEH-H)	0.0
AV TOTAL DELAY/DAY (VEH-H)	0.0

*----- SITE ACCIDENT DELAYS -----*	
BREAKDOWN DURATION (MINS)	0
RANGE OF QUEUE DELAY - MIN (VEH-H) MAX	0
AV BREAKDOWNS PER DAY	0
AV QUEUE DELAY/DAY (VEH-H)	0
AV TOTAL DELAY/DAY (VEH-H)	0

AVERAGE ACCIDENT NUMBERS (PIA/DAY)	
MAIN ROUTE WITHOUT WORKS	0.0435
MAIN ROUTE WITH WORKS	0.0422
'DIVERSION'	0.0016

PIA: Personal Injury Accidents

ECONOMIC IMPACT ON ROAD USERS	
ROAD USER COSTS PER DAY	\$25,811
CONGESTED HOURS PER DAY*	4

\*Delays Exceeding User-Specified Maximum

**USH 41/45: CTH Q TO STH 145 (WAUKESHA AND MILWAUKEE COUNTIES)**  
**NIGHTTIME 2 LANE CLOSURE**  
**NO DIVERSION ROUTE (MAX QUEUE METHOD)**

**MAY**  
 Analyzed for 2009  
 Construction Season

**GRAPHICAL REPRESENTATION OF TRAFFIC MODEL INPUT AND OUTPUT**  
**MON-THUR NORTHBOUND DIRECTION**

