

**IH 94: CTH O TO STH 100 (WAUKESHA COUNTY)  
NIGHTTIME 2 LANE CLOSURE  
NO DIVERSION ROUTE (MAX QUEUE METHOD)**

**OCTOBER**  
Analyzed for 2009  
Construction Season

**SUMMARY OF TRAFFIC MODEL OUTPUT**  
SUNDAY WESTBOUND DIRECTION

TIME OF DAY	FLOWS AND CAPACITY IN VEH/HR							AVERAGE SPEEDS IN MPH			
	MAIN ROUTE		SITE CAPA CITY	FLOW		AV.DEL PER VEH (MINS)	AVERAGE QUEUE (VEH)	MAIN ROUTE		SITE	
	DEMAND FLOW	PCT HEAVY		MAIN ROUTE	'DIVER TED'			WITHOUT WORK ZONE	WITH WORK ZONE		
MID-1 AM	1123	0.0	1500	1123	0	0.61	0	69.4	56.6	41.0	
1-2 AM	704	0.0	1500	704	0	0.55	0	69.9	57.8	42.7	
2-3 AM	594	0.0	1500	594	0	0.54	0	70.0	58.1	43.2	
3-4 AM	383	0.0	1500	383	0	0.52	0	70.2	58.7	44.0	
4-5 AM	262	0.0	1500	262	0	0.50	0	70.2	58.9	44.4	
5-6 AM	424	0.0	1500	424	0	0.52	0	70.2	58.6	43.8	
6-7 AM	856	0.0	1500	856	0	0.57	0	69.7	57.4	42.2	
7-8 AM	1128	0.0	1499	1128	0	0.65	0	69.3	55.8	39.9	
8-9 AM	1467	0.0	1499	1467	0	1.40	13	68.9	45.3	32.8	
9-10 AM	2266	0.0	OFF	2266	0	0.01	0	67.9	67.8	67.8	
10-11 AM	3122	0.0	OFF	3122	0	0.00	0	66.9	66.9	66.9	
11AM-NOON	3826	0.0	OFF	3826	0	0.00	0	64.7	64.7	64.7	
NOON-1PM	3687	0.0	OFF	3687	0	0.00	0	65.6	65.6	65.6	
1-2 PM	3372	0.0	OFF	3372	0	0.00	0	66.6	66.6	66.6	
2-3 PM	3246	0.0	OFF	3246	0	0.00	0	66.7	66.7	66.7	
3-4 PM	3524	0.0	OFF	3524	0	0.00	0	66.4	66.4	66.4	
4-5 PM	3839	0.0	OFF	3839	0	0.00	0	64.6	64.6	64.6	
5-6 PM	3288	0.0	OFF	3288	0	0.00	0	66.6	66.6	66.6	
6-7 PM	2881	0.0	OFF	2881	0	0.00	0	67.1	67.1	67.1	
7-8 PM	2403	0.0	1499	1903	500	12.88+	320	67.8	11.9	32.0	
8-9 PM	1830	0.0	1499	1500	330	16.36+	399	68.4	9.7	30.8	
9-10 PM	1495	0.0	1500	1473	22	16.17+	394	68.9	9.9	30.8	
10-11 PM	1437	0.0	1500	1437	0	15.15+	368	68.9	10.4	30.8	
11PM-MID	697	0.0	1500	697	0	1.62	63	69.9	43.5	42.4	

"OFF" INDICATES NO ROAD WORK (ALL LANES OPEN TO TRAFFIC)

+ INDICATES QUEUEING EXCEEDS USER-SPECIFIED MAXIMUM LIMIT

*----- SITE BREAKDOWN DELAYS -----*	
BREAKDOWN DURATION (MINS)	0
RANGE OF QUEUE DELAY - MIN (VEH-H) MAX	0.0
AV BREAKDOWNS PER DAY	0.00
AV QUEUE DELAY/DAY (VEH-H)	0.0
AV TOTAL DELAY/DAY (VEH-H)	0.0

*----- SITE ACCIDENT DELAYS -----*	
BREAKDOWN DURATION (MINS)	0
RANGE OF QUEUE DELAY - MIN (VEH-H) MAX	0
AV BREAKDOWNS PER DAY	0
AV QUEUE DELAY/DAY (VEH-H)	0
AV TOTAL DELAY/DAY (VEH-H)	0

AVERAGE ACCIDENT NUMBERS (PIA/DAY)	
MAIN ROUTE WITHOUT WORKS	0.0236
MAIN ROUTE WITH WORKS	0.0223
'DIVERSION'	0.0010
PIA: Personal Injury Accidents	
IMPACTS ON ROAD USERS	
ROAD USER COSTS PER DAY	\$29,346
CONGESTED HOURS PER DAY*	4

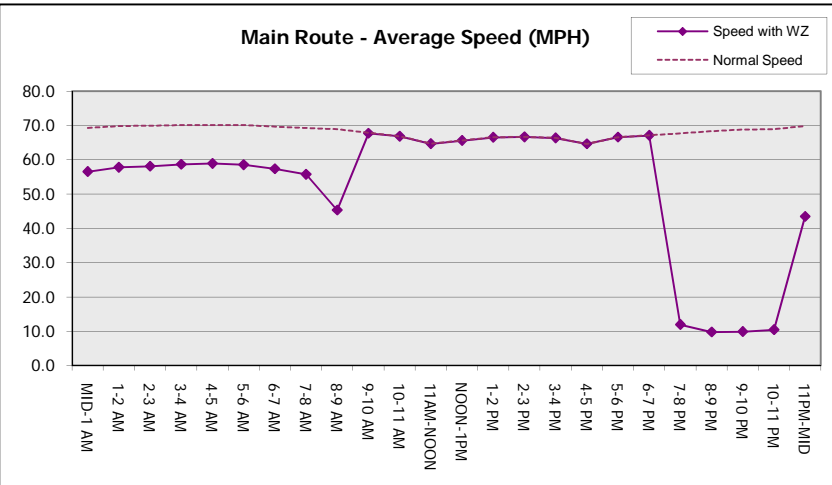
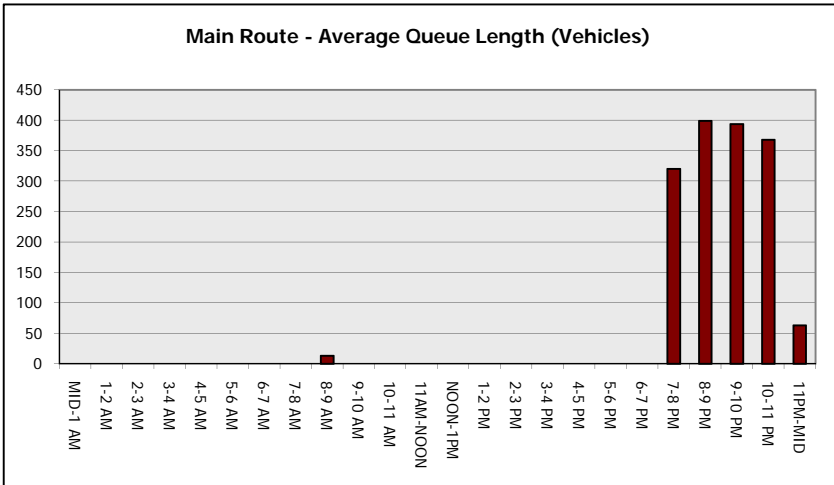
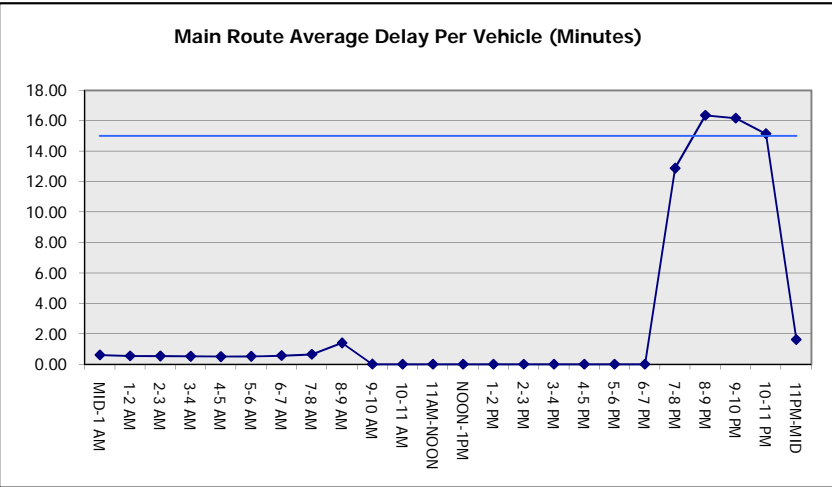
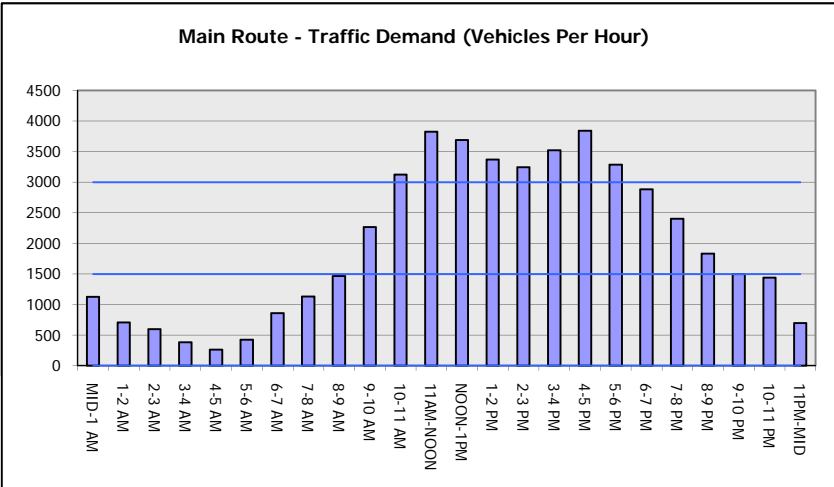
\*Delays Exceeding User-Specified Maximum

**IH 94: CTH O TO STH 100 (WAUKESHA COUNTY)  
 NIGHTTIME 2 LANE CLOSURE  
 NO DIVERSION ROUTE (MAX QUEUE METHOD)**

**OCTOBER**  
 Analyzed for 2009  
 Construction Season

**GRAPHICAL REPRESENTATION OF TRAFFIC MODEL INPUT AND OUTPUT**

**SUNDAY WESTBOUND DIRECTION**



<b>IH 94: CTH 0 TO STH 100 (WAUKESHA COUNTY)</b> <b>NIGHTTIME 2 LANE CLOSURE</b> <b>NO DIVERSION ROUTE (MAX QUEUE METHOD)</b>	<b>OCTOBER</b>
	Analyzed for 2009 Construction Season

**SUMMARY OF TRAFFIC MODEL OUTPUT**

SUNDAY EASTBOUND DIRECTION

TIME OF DAY	FLOWS AND CAPACITY IN VEH/HR							AVERAGE SPEEDS IN MPH			
	MAIN ROUTE		SITE CAPA CITY	FLOW		AV.DEL PER VEH (MINS)	AVERAGE QUEUE (VEH)	MAIN ROUTE		SITE	
	DEMAND FLOW	PCT HEAVY		MAIN ROUTE	'DIVER TED'			WITHOUT WORK ZONE	WITH WORK ZONE		
MID-1 AM	1107	0.0	1500	1107	0	0.60	0	69.4	56.7	41.3	
1-2 AM	573	0.0	1500	573	0	0.54	0	70.0	58.2	43.2	
2-3 AM	399	0.0	1500	399	0	0.52	0	70.2	58.6	43.9	
3-4 AM	261	0.0	1500	261	0	0.50	0	70.2	58.9	44.5	
4-5 AM	277	0.0	1500	277	0	0.51	0	70.2	58.9	44.4	
5-6 AM	382	0.0	1500	382	0	0.52	0	70.2	58.7	44.0	
6-7 AM	843	0.0	1500	843	0	0.57	0	69.7	57.4	42.2	
7-8 AM	1239	0.0	1499	1239	0	0.75	0	69.2	54.0	37.4	
8-9 AM	1594	0.0	1499	1594	0	1.88	27	68.7	40.6	31.1	
9-10 AM	2235	0.0	OFF	2235	0	0.02	1	67.9	67.4	67.4	
10-11 AM	2956	0.0	OFF	2956	0	0.00	0	67.1	67.1	67.1	
11AM-NOON	3785	0.0	OFF	3785	0	0.00	0	65.0	65.0	65.0	
NOON-1PM	3841	0.0	OFF	3841	0	0.00	0	64.6	64.6	64.6	
1-2 PM	3605	0.0	OFF	3605	0	0.00	0	66.2	66.2	66.2	
2-3 PM	3685	0.0	OFF	3685	0	0.00	0	65.7	65.7	65.7	
3-4 PM	3762	0.0	OFF	3762	0	0.00	0	65.1	65.1	65.1	
4-5 PM	3474	0.0	OFF	3474	0	0.00	0	66.4	66.4	66.4	
5-6 PM	3251	0.0	OFF	3251	0	0.00	0	66.7	66.7	66.7	
6-7 PM	3768	0.0	OFF	3768	0	0.00	0	65.1	65.1	65.1	
7-8 PM	2906	0.0	1499	1550	1356	16.51+	412	67.1	9.6	36.6	
8-9 PM	2167	0.0	1499	1902	265	12.63+	325	68.1	12.1	30.8	
9-10 PM	1794	0.0	1499	1454	341	16.18+	395	68.5	9.8	30.8	
10-11 PM	1188	0.0	1499	1188	0	10.86	284	69.2	13.7	33.0	
11PM-MID	672	0.0	1500	672	0	0.68	5	69.9	55.7	42.8	

"OFF" INDICATES NO ROAD WORK (ALL LANES OPEN TO TRAFFIC)

+ INDICATES QUEUEING EXCEEDS USER-SPECIFIED MAXIMUM LIMIT

BREAKDOWN DURATION (MINS)	0
RANGE OF QUEUE DELAY - MIN (VEH-H) MAX	0.0
AV BREAKDOWNS PER DAY	0.00
AV QUEUE DELAY/DAY (VEH-H)	0.0
AV TOTAL DELAY/DAY (VEH-H)	0.0

BREAKDOWN DURATION (MINS)	0
RANGE OF QUEUE DELAY - MIN (VEH-H) MAX	0
AV BREAKDOWNS PER DAY	0
AV QUEUE DELAY/DAY (VEH-H)	0
AV TOTAL DELAY/DAY (VEH-H)	0

MAIN ROUTE WITHOUT WORKS	0.0246
MAIN ROUTE WITH WORKS	0.0227
'DIVERSION'	0.0022

PIA: Personal Injury Accidents

ROAD USER COSTS PER DAY	\$32,102
CONGESTED HOURS PER DAY*	3

\*Delays Exceeding User-Specified Maximum

**IH 94: CTH O TO STH 100 (WAUKESHA COUNTY)  
 NIGHTTIME 2 LANE CLOSURE  
 NO DIVERSION ROUTE (MAX QUEUE METHOD)**

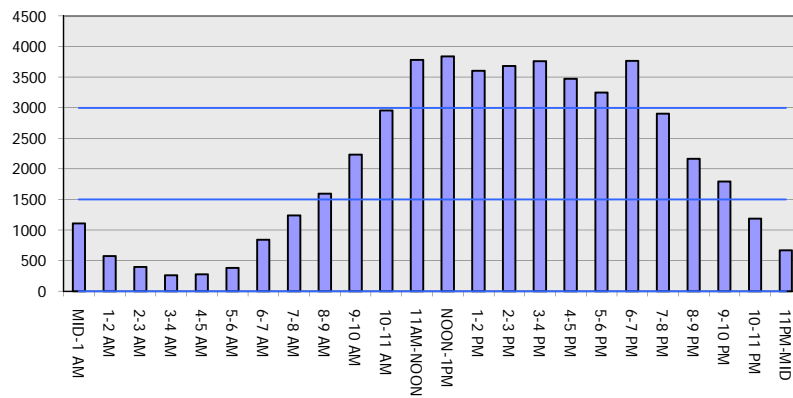
**OCTOBER**

Analyzed for 2009  
 Construction Season

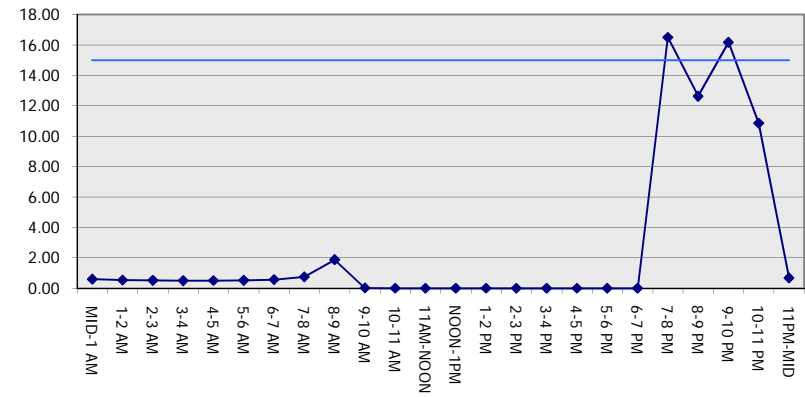
**GRAPHICAL REPRESENTATION OF TRAFFIC MODEL INPUT AND OUTPUT**

**SUNDAY EASTBOUND DIRECTION**

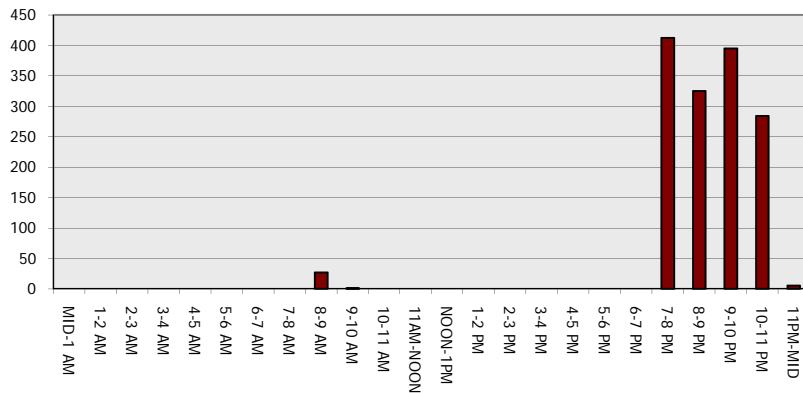
**Main Route - Traffic Demand (Vehicles Per Hour)**



**Main Route Average Delay Per Vehicle (Minutes)**



**Main Route - Average Queue Length (Vehicles)**



**Main Route - Average Speed (MPH)**

