

IH 94: CTH O TO STH 100 (WAUKESHA COUNTY) NIGHTTIME CLOSURE NO DIVERSION ROUTE (MAX QUEUE METHOD)	OCTOBER
	Analyzed for 2009 Construction Season

SUMMARY OF TRAFFIC MODEL OUTPUT

SUNDAY WESTBOUND DIRECTION

TIME OF DAY	FLOWS AND CAPACITY IN VEH/HR						AVERAGE SPEEDS IN MPH			
	MAIN ROUTE		SITE CAPA CITY	FLOW		AV.DEL PER VEH (MINS)	AVERAGE QUEUE (VEH)	MAIN ROUTE		SITE
	DEMAND FLOW	PCT HEAVY		MAIN ROUTE	'DIVER TED'			WITHOUT WORK ZONE	WITH WORK ZONE	
MID-1 AM	1123	0.0	3000	1123	0	0.35	0	69.4	61.4	49.7
1-2 AM	704	0.0	3000	704	0	0.36	0	69.9	61.6	49.7
2-3 AM	594	0.0	3000	594	0	0.36	0	70.0	61.7	49.7
3-4 AM	383	0.0	3000	383	0	0.36	0	70.2	61.8	49.7
4-5 AM	262	0.0	3000	262	0	0.36	0	70.2	61.8	49.7
5-6 AM	424	0.0	3000	424	0	0.36	0	70.2	61.8	49.7
6-7 AM	856	0.0	3000	856	0	0.35	0	69.7	61.5	49.7
7-8 AM	1128	0.0	3000	1128	0	0.35	0	69.3	61.4	49.7
8-9 AM	1467	0.0	3000	1467	0	0.34	0	68.9	61.1	49.7
9-10 AM	2266	0.0	OFF	2266	0	0.00	0	67.9	67.9	67.9
10-11 AM	3122	0.0	OFF	3122	0	0.00	0	66.9	66.9	66.9
11AM-NOON	3826	0.0	OFF	3826	0	0.00	0	64.7	64.7	64.7
NOON-1PM	3687	0.0	OFF	3687	0	0.00	0	65.6	65.6	65.6
1-2 PM	3372	0.0	OFF	3372	0	0.00	0	66.6	66.6	66.6
2-3 PM	3246	0.0	OFF	3246	0	0.00	0	66.7	66.7	66.7
3-4 PM	3524	0.0	OFF	3524	0	0.00	0	66.4	66.4	66.4
4-5 PM	3839	0.0	OFF	3839	0	0.00	0	64.6	64.6	64.6
5-6 PM	3288	0.0	OFF	3288	0	0.00	0	66.6	66.6	66.6
6-7 PM	2881	0.0	OFF	2881	0	0.00	0	67.1	67.1	67.1
7-8 PM	2403	0.0	3000	2403	0	0.34	0	67.8	60.3	49.2
8-9 PM	1830	0.0	3000	1830	0	0.34	0	68.4	60.9	49.7
9-10 PM	1495	0.0	3000	1495	0	0.34	0	68.9	61.1	49.7
10-11 PM	1437	0.0	3000	1437	0	0.34	0	68.9	61.2	49.7
11PM-MID	697	0.0	3000	697	0	0.36	0	69.9	61.7	49.7

"OFF" INDICATES NO ROAD WORK (ALL LANES OPEN TO TRAFFIC)

----- SITE BREAKDOWN DELAYS -----	
BREAKDOWN DURATION (MINS)	0
RANGE OF QUEUE DELAY - MIN (VEH-H) MAX	0.0
AV BREAKDOWNS PER DAY	0.00
AV QUEUE DELAY/DAY (VEH-H)	0.0
AV TOTAL DELAY/DAY (VEH-H)	0.0

----- SITE ACCIDENT DELAYS -----	
BREAKDOWN DURATION (MINS)	0
RANGE OF QUEUE DELAY - MIN (VEH-H) MAX	0
AV BREAKDOWNS PER DAY	0
AV QUEUE DELAY/DAY (VEH-H)	0
AV TOTAL DELAY/DAY (VEH-H)	0

AVERAGE ACCIDENT NUMBERS (PIA/DAY)	
MAIN ROUTE WITHOUT WORKS	0.0236
MAIN ROUTE WITH WORKS	0.0226
'DIVERSION'	0.0000
<small>PIA: Personal Injury Accidents</small>	
IMPACTS ON ROAD USERS	
ROAD USER COSTS PER DAY	\$1,177
CONGESTED HOURS PER DAY*	0

*Delays Exceeding User-Specified Maximum

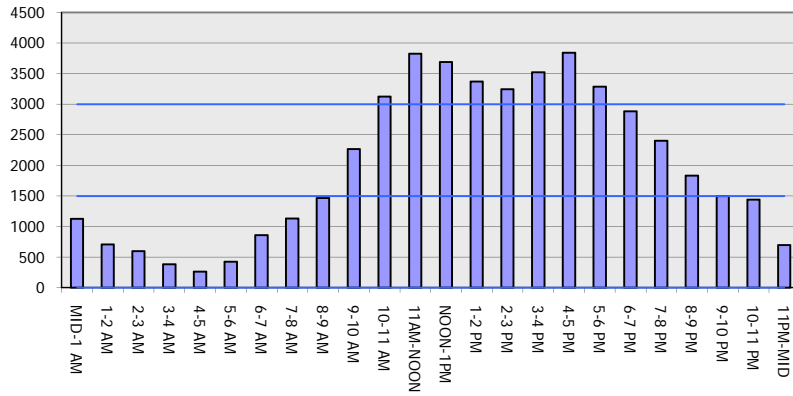
IH 94: CTH O TO STH 100 (WAUKESHA COUNTY)
NIGHTTIME CLOSURE
NO DIVERSION ROUTE (MAX QUEUE METHOD)

OCTOBER
 Analyzed for 2009
 Construction Season

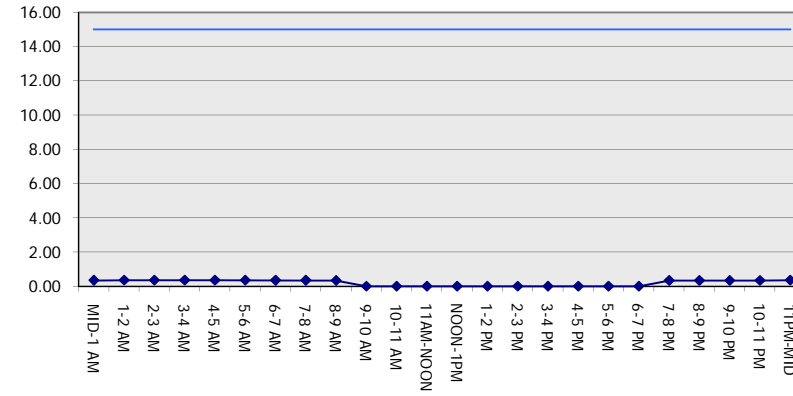
GRAPHICAL REPRESENTATION OF TRAFFIC MODEL INPUT AND OUTPUT

SUNDAY WESTBOUND DIRECTION

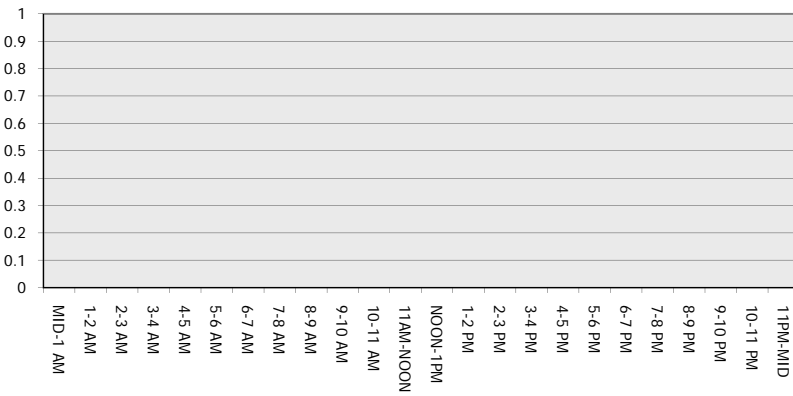
Main Route - Traffic Demand (Vehicles Per Hour)



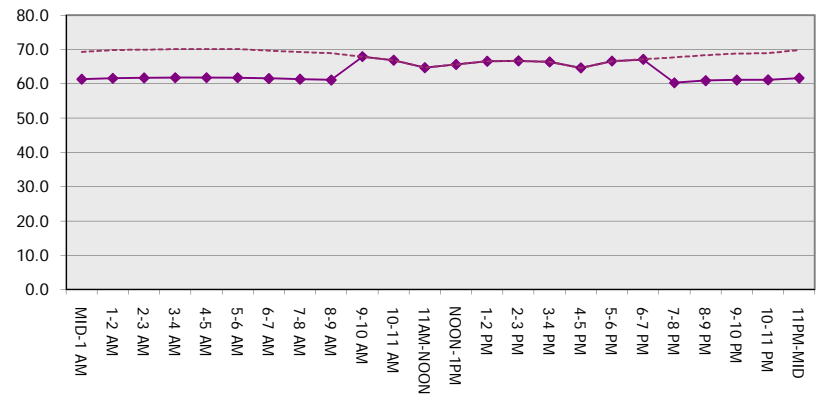
Main Route Average Delay Per Vehicle (Minutes)



Main Route - Average Queue Length (Vehicles)



Main Route - Average Speed (MPH)



IH 94: CTH O TO STH 100 (WAUKESHA COUNTY) NIGHTTIME CLOSURE NO DIVERSION ROUTE (MAX QUEUE METHOD)	OCTOBER
	Analyzed for 2009 Construction Season

SUMMARY OF TRAFFIC MODEL OUTPUT

SUNDAY EASTBOUND DIRECTION

TIME OF DAY	FLOWS AND CAPACITY IN VEH/HR							AVERAGE SPEEDS IN MPH		
	MAIN ROUTE		SITE CAPA CITY	FLOW		AV.DEL PER VEH (MINS)	AVERAGE QUEUE (VEH)	MAIN ROUTE		SITE
	DEMAND FLOW	PCT HEAVY		MAIN ROUTE	'DIVER TED'			WITHOUT WORK ZONE	WITH WORK ZONE	
MID-1 AM	1107	0.0	3000	1107	0	0.35	0	69.4	61.4	49.7
1-2 AM	573	0.0	3000	573	0	0.36	0	70.0	61.7	49.7
2-3 AM	399	0.0	3000	399	0	0.36	0	70.2	61.8	49.7
3-4 AM	261	0.0	3000	261	0	0.36	0	70.2	61.8	49.7
4-5 AM	277	0.0	3000	277	0	0.36	0	70.2	61.8	49.7
5-6 AM	382	0.0	3000	382	0	0.36	0	70.2	61.8	49.7
6-7 AM	843	0.0	3000	843	0	0.35	0	69.7	61.5	49.7
7-8 AM	1239	0.0	3000	1239	0	0.35	0	69.2	61.3	49.7
8-9 AM	1594	0.0	3000	1594	0	0.34	0	68.7	61.0	49.7
9-10 AM	2235	0.0	OFF	2235	0	0.00	0	67.9	67.9	67.9
10-11 AM	2956	0.0	OFF	2956	0	0.00	0	67.1	67.1	67.1
11AM-NOON	3785	0.0	OFF	3785	0	0.00	0	65.0	65.0	65.0
NOON-1PM	3841	0.0	OFF	3841	0	0.00	0	64.6	64.6	64.6
1-2 PM	3605	0.0	OFF	3605	0	0.00	0	66.2	66.2	66.2
2-3 PM	3685	0.0	OFF	3685	0	0.00	0	65.7	65.7	65.7
3-4 PM	3762	0.0	OFF	3762	0	0.00	0	65.1	65.1	65.1
4-5 PM	3474	0.0	OFF	3474	0	0.00	0	66.4	66.4	66.4
5-6 PM	3251	0.0	OFF	3251	0	0.00	0	66.7	66.7	66.7
6-7 PM	3768	0.0	OFF	3768	0	0.00	0	65.1	65.1	65.1
7-8 PM	2906	0.0	2999	2906	0	0.94	18	67.1	50.2	39.6
8-9 PM	2167	0.0	3000	2167	0	0.33	0	68.1	60.7	49.7
9-10 PM	1794	0.0	3000	1794	0	0.34	0	68.5	60.9	49.7
10-11 PM	1188	0.0	3000	1188	0	0.35	0	69.2	61.3	49.7
11PM-MID	672	0.0	3000	672	0	0.36	0	69.9	61.7	49.7

"OFF" INDICATES NO ROAD WORK (ALL LANES OPEN TO TRAFFIC)

----- SITE BREAKDOWN DELAYS -----	
BREAKDOWN DURATION (MINS)	0
RANGE OF QUEUE DELAY - MIN	0.0
(VEH-H) MAX	0.0
AV BREAKDOWNS PER DAY	0.00
AV QUEUE DELAY/DAY (VEH-H)	0.0
AV TOTAL DELAY/DAY (VEH-H)	0.0

----- SITE ACCIDENT DELAYS -----	
BREAKDOWN DURATION (MINS)	0
RANGE OF QUEUE DELAY - MIN	0
(VEH-H) MAX	0
AV BREAKDOWNS PER DAY	0
AV QUEUE DELAY/DAY (VEH-H)	0
AV TOTAL DELAY/DAY (VEH-H)	0

AVERAGE ACCIDENT NUMBERS (PIA/DAY)	
MAIN ROUTE WITHOUT WORKS	0.0246
MAIN ROUTE WITH WORKS	0.0235
'DIVERSION'	0.0000

PIA: Personal Injury Accidents

ECONOMIC IMPACT ON ROAD USERS	
ROAD USER COSTS PER DAY	\$1,621
CONGESTED HOURS PER DAY*	0

*Delays Exceeding User-Specified Maximum

**IH 94: CTH O TO STH 100 (WAUKESHA COUNTY)
NIGHTTIME CLOSURE
NO DIVERSION ROUTE (MAX QUEUE METHOD)**

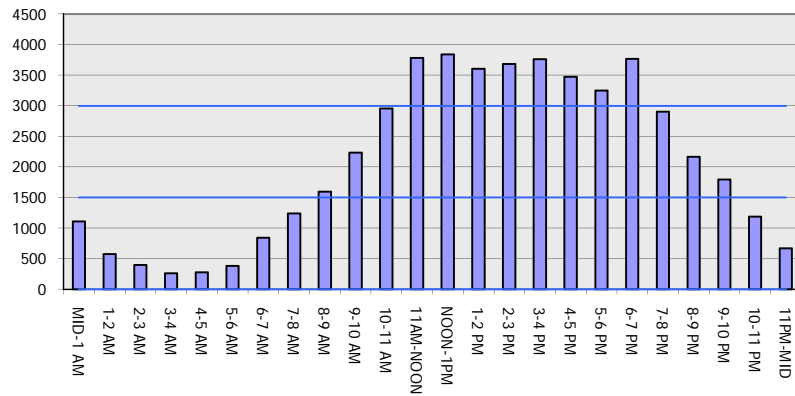
OCTOBER

Analyzed for 2009
Construction Season

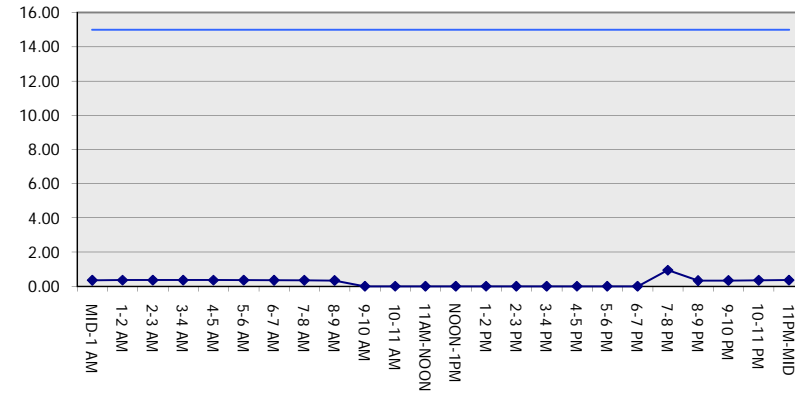
GRAPHICAL REPRESENTATION OF TRAFFIC MODEL INPUT AND OUTPUT

SUNDAY EASTBOUND DIRECTION

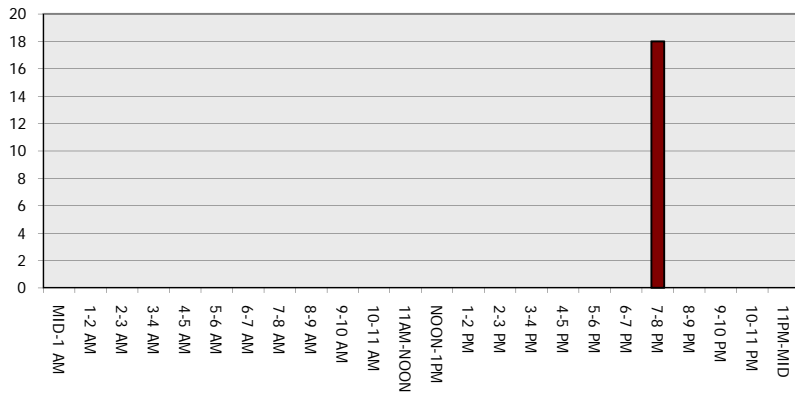
Main Route - Traffic Demand (Vehicles Per Hour)



Main Route Average Delay Per Vehicle (Minutes)



Main Route - Average Queue Length (Vehicles)



Main Route - Average Speed (MPH)

