

IH 94: CTH O TO STH 100 (WAUKESHA COUNTY) NIGHTTIME CLOSURE NO DIVERSION ROUTE (MAX QUEUE METHOD)	OCTOBER
	Analyzed for 2009 Construction Season

SUMMARY OF TRAFFIC MODEL OUTPUT

SATURDAY WESTBOUND DIRECTION

TIME OF DAY	FLOWS AND CAPACITY IN VEH/HR						AVERAGE SPEEDS IN MPH			
	MAIN ROUTE		SITE CAPA CITY	FLOW		AV.DEL PER VEH (MINS)	AVERAGE QUEUE (VEH)	MAIN ROUTE		SITE
	DEMAND FLOW	PCT HEAVY		MAIN ROUTE	'DIVER TED'			WITHOUT WORK ZONE	WITH WORK ZONE	
MID-1 AM	990	0.0	3000	990	0	0.35	0	69.5	61.4	49.7
1-2 AM	600	0.0	3000	600	0	0.36	0	70.0	61.7	49.7
2-3 AM	589	0.0	3000	589	0	0.36	0	70.0	61.7	49.7
3-4 AM	451	0.0	3000	451	0	0.36	0	70.2	61.8	49.7
4-5 AM	568	0.0	3000	568	0	0.36	0	70.0	61.7	49.7
5-6 AM	1054	0.0	3000	1054	0	0.35	0	69.4	61.4	49.7
6-7 AM	1673	0.0	3000	1673	0	0.34	0	68.7	61.0	49.7
7-8 AM	2450	0.0	2999	2450	0	0.41	0	67.7	58.8	46.5
8-9 AM	3320	0.0	OFF	3320	0	0.00	0	66.6	66.6	66.6
9-10 AM	3771	0.0	OFF	3771	0	0.00	0	65.1	65.1	65.1
10-11 AM	4077	0.0	OFF	4077	0	0.00	0	63.0	63.0	63.0
11AM-NOON	4492	0.0	OFF	4492	0	0.00	0	60.2	60.2	60.2
NOON-1PM	4750	0.0	OFF	4750	0	0.00	0	58.4	58.4	58.4
1-2 PM	4600	0.0	OFF	4600	0	0.00	0	59.4	59.4	59.4
2-3 PM	4471	0.0	OFF	4471	0	0.00	0	60.3	60.3	60.3
3-4 PM	4146	0.0	OFF	4146	0	0.00	0	62.5	62.5	62.5
4-5 PM	4154	0.0	OFF	4154	0	0.00	0	62.5	62.5	62.5
5-6 PM	3565	0.0	OFF	3565	0	0.00	0	66.3	66.3	66.3
6-7 PM	3621	0.0	2999	3621	0	6.02	339	66.1	21.1	37.3
7-8 PM	2652	0.0	2999	2652	0	9.33	488	67.4	15.6	37.6
8-9 PM	2311	0.0	3000	2311	0	1.04	57	67.9	49.1	47.6
9-10 PM	2291	0.0	3000	2291	0	0.33	0	67.9	60.6	49.7
10-11 PM	2494	0.0	3000	2494	0	0.40	0	67.6	59.1	46.9
11PM-MID	1596	0.0	3000	1596	0	0.34	0	68.7	61.0	49.7

"OFF" INDICATES NO ROAD WORK (ALL LANES OPEN TO TRAFFIC)

----- SITE BREAKDOWN DELAYS -----	
BREAKDOWN DURATION (MINS)	0
RANGE OF QUEUE DELAY - MIN	0.0
(VEH-H) MAX	0.0
AV BREAKDOWNS PER DAY	0.00
AV QUEUE DELAY/DAY (VEH-H)	0.0
AV TOTAL DELAY/DAY (VEH-H)	0.0

----- SITE ACCIDENT DELAYS -----	
BREAKDOWN DURATION (MINS)	0
RANGE OF QUEUE DELAY - MIN	0
(VEH-H) MAX	0
AV BREAKDOWNS PER DAY	0
AV QUEUE DELAY/DAY (VEH-H)	0
AV TOTAL DELAY/DAY (VEH-H)	0

AVERAGE ACCIDENT NUMBERS (PIA/DAY)	
MAIN ROUTE WITHOUT WORKS	0.0319
MAIN ROUTE WITH WORKS	0.0304
'DIVERSION'	0.0000
<small>PIA: Personal Injury Accidents</small>	
IMPACTS ON ROAD USERS	
ROAD USER COSTS PER DAY	\$15,004
CONGESTED HOURS PER DAY*	0

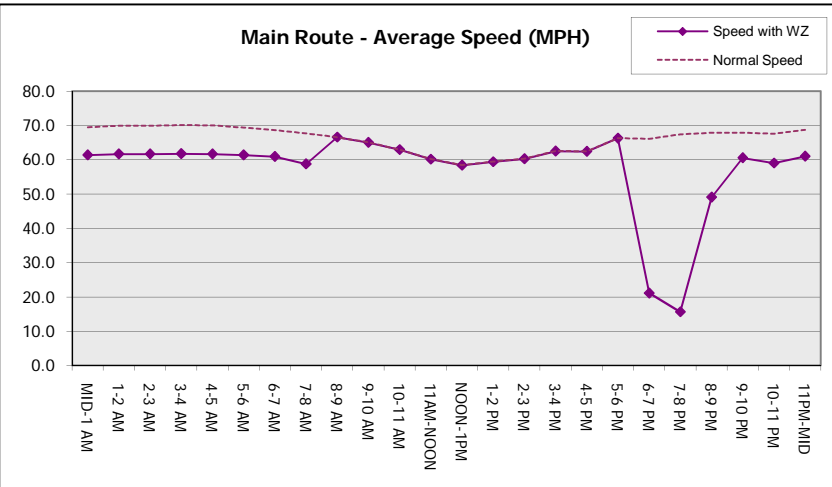
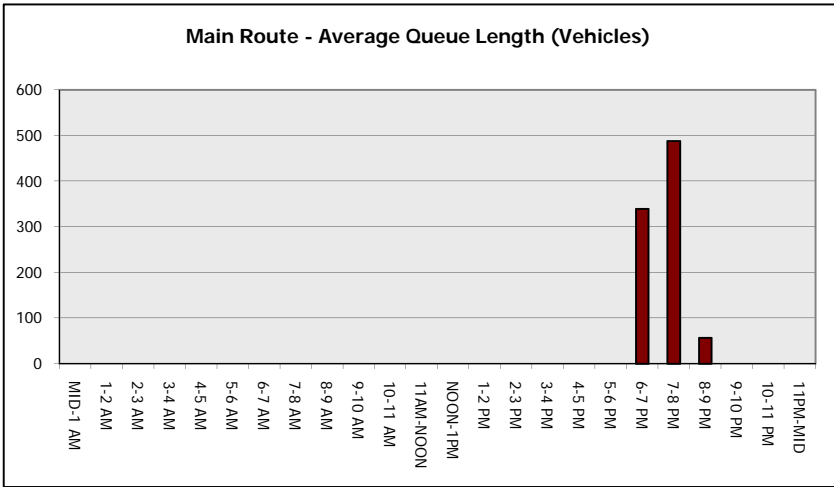
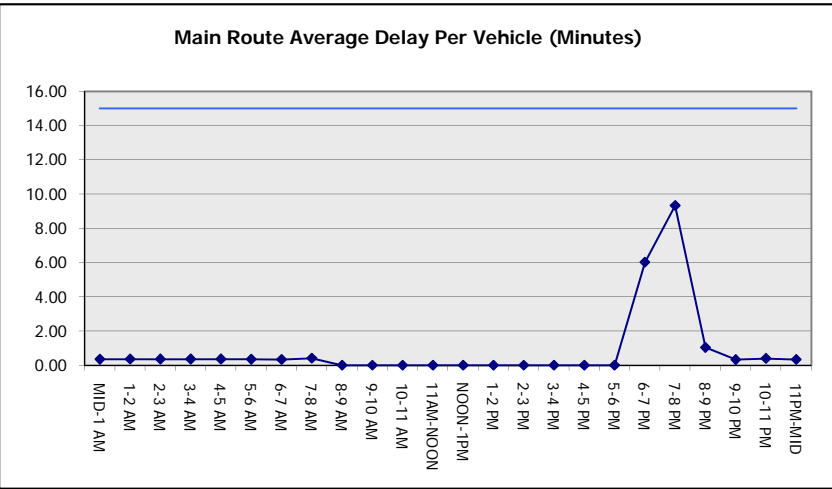
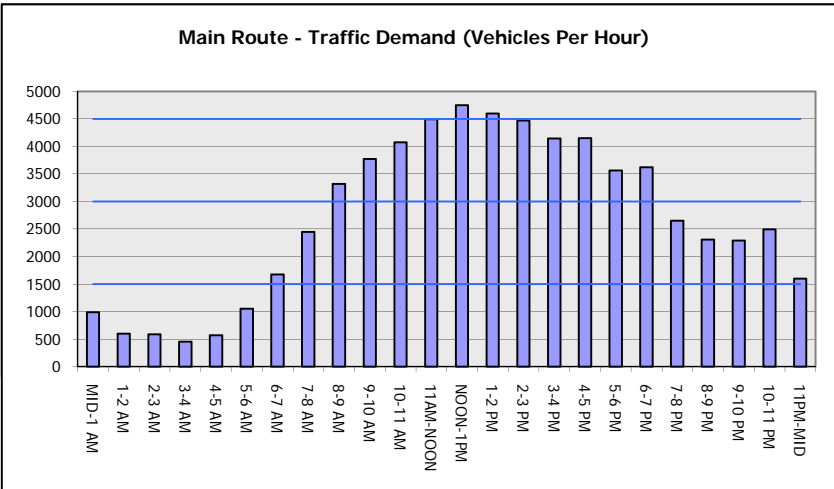
*Delays Exceeding User-Specified Maximum

IH 94: CTH O TO STH 100 (WAUKESHA COUNTY)
NIGHTTIME CLOSURE
NO DIVERSION ROUTE (MAX QUEUE METHOD)

OCTOBER
 Analyzed for 2009
 Construction Season

GRAPHICAL REPRESENTATION OF TRAFFIC MODEL INPUT AND OUTPUT

SATURDAY WESTBOUND DIRECTION



IH 94: CTH O TO STH 100 (WAUKESHA COUNTY) NIGHTTIME CLOSURE NO DIVERSION ROUTE (MAX QUEUE METHOD)	OCTOBER
	Analyzed for 2009 Construction Season

SUMMARY OF TRAFFIC MODEL OUTPUT

SATURDAY EASTBOUND DIRECTION

TIME OF DAY	FLOWS AND CAPACITY IN VEH/HR							AVERAGE SPEEDS IN MPH		
	MAIN ROUTE		SITE CAPA CITY	FLOW		AV.DEL PER VEH (MINS)	AVERAGE QUEUE (VEH)	MAIN ROUTE		SITE
	DEMAND FLOW	PCT HEAVY		MAIN ROUTE	'DIVER TED'			WITHOUT WORK ZONE	WITH WORK ZONE	
MID-1 AM	1057	0.0	3000	1057	0	0.35	0	69.4	61.4	49.7
1-2 AM	530	0.0	3000	530	0	0.36	0	70.0	61.7	49.7
2-3 AM	411	0.0	3000	411	0	0.36	0	70.2	61.8	49.7
3-4 AM	276	0.0	3000	276	0	0.36	0	70.2	61.8	49.7
4-5 AM	383	0.0	3000	383	0	0.36	0	70.2	61.8	49.7
5-6 AM	874	0.0	3000	874	0	0.35	0	69.7	61.5	49.7
6-7 AM	1437	0.0	3000	1437	0	0.34	0	68.9	61.2	49.7
7-8 AM	1952	0.0	2999	1952	0	0.34	0	68.3	60.8	49.7
8-9 AM	2898	0.0	OFF	2898	0	0.00	0	67.1	67.1	67.1
9-10 AM	3342	0.0	OFF	3342	0	0.00	0	66.6	66.6	66.6
10-11 AM	3600	0.0	OFF	3600	0	0.00	0	66.3	66.3	66.3
11AM-NOON	4029	0.0	OFF	4029	0	0.00	0	63.3	63.3	63.3
NOON-1PM	4355	0.0	OFF	4355	0	0.00	0	61.1	61.1	61.1
1-2 PM	4277	0.0	OFF	4277	0	0.00	0	61.7	61.7	61.7
2-3 PM	4387	0.0	OFF	4387	0	0.00	0	60.9	60.9	60.9
3-4 PM	4352	0.0	OFF	4352	0	0.00	0	61.1	61.1	61.1
4-5 PM	4482	0.0	OFF	4482	0	0.00	0	60.2	60.2	60.2
5-6 PM	4752	0.0	OFF	4752	0	0.00	0	58.4	58.4	58.4
6-7 PM	4382	0.0	2999	3837	545	10.80+	625	60.9	14.7	37.3
7-8 PM	3510	0.0	3000	3004	507	16.11+	849	66.4	11.7	37.3
8-9 PM	2652	0.0	2999	2652	0	13.09+	687	67.4	12.9	37.3
9-10 PM	2837	0.0	3000	2837	0	8.29	419	67.2	16.8	37.3
10-11 PM	2361	0.0	2999	2361	0	1.62	105	67.8	42.6	45.3
11PM-MID	1753	0.0	3000	1753	0	0.34	0	68.6	60.9	49.7

"OFF" INDICATES NO ROAD WORK (ALL LANES OPEN TO TRAFFIC)

+ INDICATES QUEUEING EXCEEDS USER-SPECIFIED MAXIMUM LIMIT

BREAKDOWN DURATION (MINS)	0
RANGE OF QUEUE DELAY - MIN (VEH-H) MAX	0.0
AV BREAKDOWNS PER DAY	0.00
AV QUEUE DELAY/DAY (VEH-H)	0.0
AV TOTAL DELAY/DAY (VEH-H)	0.0

BREAKDOWN DURATION (MINS)	0
RANGE OF QUEUE DELAY - MIN (VEH-H) MAX	0
AV BREAKDOWNS PER DAY	0
AV QUEUE DELAY/DAY (VEH-H)	0
AV TOTAL DELAY/DAY (VEH-H)	0

MAIN ROUTE WITHOUT WORKS	0.0320
MAIN ROUTE WITH WORKS	0.0300
'DIVERSION'	0.0012

PIA: Personal Injury Accidents

ROAD USER COSTS PER DAY	\$46,655
CONGESTED HOURS PER DAY*	3

*Delays Exceeding User-Specified Maximum

**IH 94: CTH O TO STH 100 (WAUKESHA COUNTY)
NIGHTTIME CLOSURE
NO DIVERSION ROUTE (MAX QUEUE METHOD)**

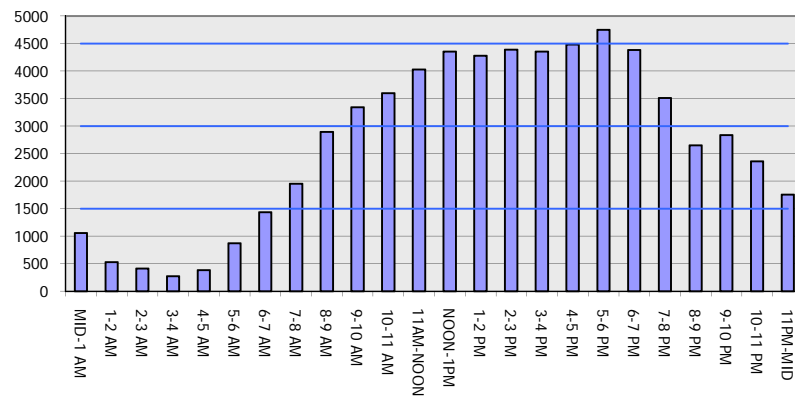
OCTOBER

Analyzed for 2009
Construction Season

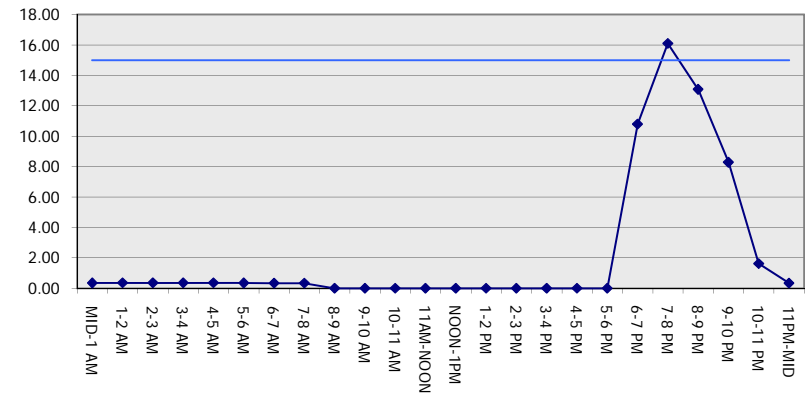
GRAPHICAL REPRESENTATION OF TRAFFIC MODEL INPUT AND OUTPUT

SATURDAY EASTBOUND DIRECTION

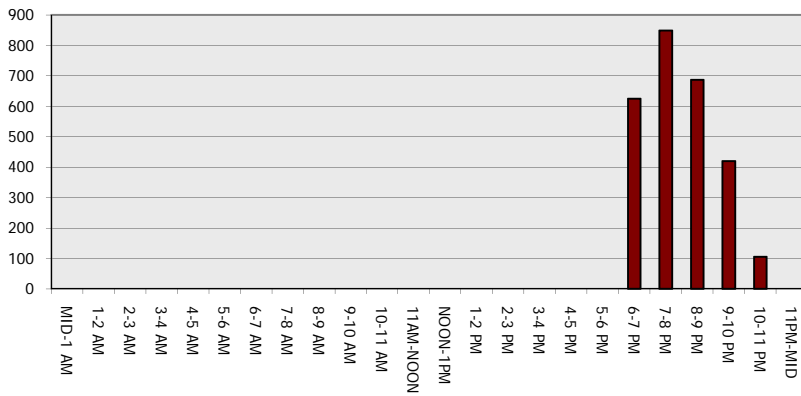
Main Route - Traffic Demand (Vehicles Per Hour)



Main Route Average Delay Per Vehicle (Minutes)



Main Route - Average Queue Length (Vehicles)



Main Route - Average Speed (MPH)

