

<b>IH 94: CTH O TO STH 100 (WAUKESHA COUNTY)</b> <b>NIGHTTIME CLOSURE</b> <b>NO DIVERSION ROUTE (MAX QUEUE METHOD)</b>	<b>OCTOBER</b>
	Analyzed for 2009 Construction Season

**SUMMARY OF TRAFFIC MODEL OUTPUT**

FRIDAY WESTBOUND DIRECTION

TIME OF DAY	FLOWS AND CAPACITY IN VEH/HR						AVERAGE SPEEDS IN MPH			
	MAIN ROUTE		SITE CAPA CITY	FLOW		AV.DEL PER VEH (MINS)	AVERAGE QUEUE (VEH)	MAIN ROUTE		SITE
	DEMAND FLOW	PCT HEAVY		MAIN ROUTE	'DIVER TED'			WITHOUT WORK ZONE	WITH WORK ZONE	
MID-1 AM	355	0.0	3000	355	0	0.36	0	70.2	61.8	49.7
1-2 AM	260	0.0	3000	260	0	0.36	0	70.2	61.8	49.7
2-3 AM	302	0.0	3000	302	0	0.36	0	70.2	61.8	49.7
3-4 AM	447	0.0	3000	447	0	0.36	0	70.2	61.8	49.7
4-5 AM	829	0.0	3000	829	0	0.35	0	69.7	61.5	49.7
5-6 AM	2169	0.0	OFF	2169	0	0.00	0	68.1	68.1	68.1
6-7 AM	4576	0.0	OFF	4576	0	0.00	0	59.6	59.6	59.6
7-8 AM	5783	0.0	OFF	5783	0	0.00	0	51.4	51.4	51.4
8-9 AM	5099	0.0	OFF	5099	0	0.00	0	56.0	56.0	56.0
9-10 AM	4134	0.0	OFF	4134	0	0.00	0	62.6	62.6	62.6
10-11 AM	4297	0.0	OFF	4297	0	0.00	0	61.5	61.5	61.5
11AM-NOON	4756	0.0	OFF	4756	0	0.00	0	58.4	58.4	58.4
NOON-1PM	5042	0.0	OFF	5042	0	0.00	0	56.4	56.4	56.4
1-2 PM	5324	0.0	OFF	5324	0	0.00	0	54.5	54.5	54.5
2-3 PM	5857	0.0	OFF	5857	0	0.00	0	50.9	50.9	50.9
3-4 PM	6185	0.0	OFF	6185	0	0.00	0	48.6	48.6	48.6
4-5 PM	5612	0.0	OFF	5612	0	0.00	0	52.5	52.5	52.5
5-6 PM	5356	0.0	OFF	5356	0	0.00	0	54.3	54.3	54.3
6-7 PM	5292	0.0	OFF	5292	0	0.00	0	54.7	54.7	54.7
7-8 PM	3550	0.0	2999	3550	0	6.71	364	66.3	19.6	37.3
8-9 PM	2444	0.0	2999	2444	0	5.09	303	67.7	23.8	41.0
9-10 PM	2549	0.0	3000	2549	0	0.43	0	67.6	58.4	45.6
10-11 PM	2173	0.0	3000	2173	0	0.33	0	68.1	60.7	49.7
11PM-MID	1580	0.0	3000	1580	0	0.34	0	68.7	61.0	49.7

"OFF" INDICATES NO ROAD WORK (ALL LANES OPEN TO TRAFFIC)

*----- SITE BREAKDOWN DELAYS -----*	
BREAKDOWN DURATION (MINS)	0
RANGE OF QUEUE DELAY - MIN (VEH-H) MAX	0.0
AV BREAKDOWNS PER DAY	0.00
AV QUEUE DELAY/DAY (VEH-H)	0.0
AV TOTAL DELAY/DAY (VEH-H)	0.0

*----- SITE ACCIDENT DELAYS -----*	
BREAKDOWN DURATION (MINS)	0
RANGE OF QUEUE DELAY - MIN (VEH-H) MAX	0
AV BREAKDOWNS PER DAY	0
AV QUEUE DELAY/DAY (VEH-H)	0
AV TOTAL DELAY/DAY (VEH-H)	0

AVERAGE ACCIDENT NUMBERS (PIA/DAY)	
MAIN ROUTE WITHOUT WORKS	0.0414
MAIN ROUTE WITH WORKS	0.0405
'DIVERSION'	0.0000
<small>PIA: Personal Injury Accidents</small>	
IMPACTS ON ROAD USERS	
ROAD USER COSTS PER DAY	\$9,968
CONGESTED HOURS PER DAY*	0

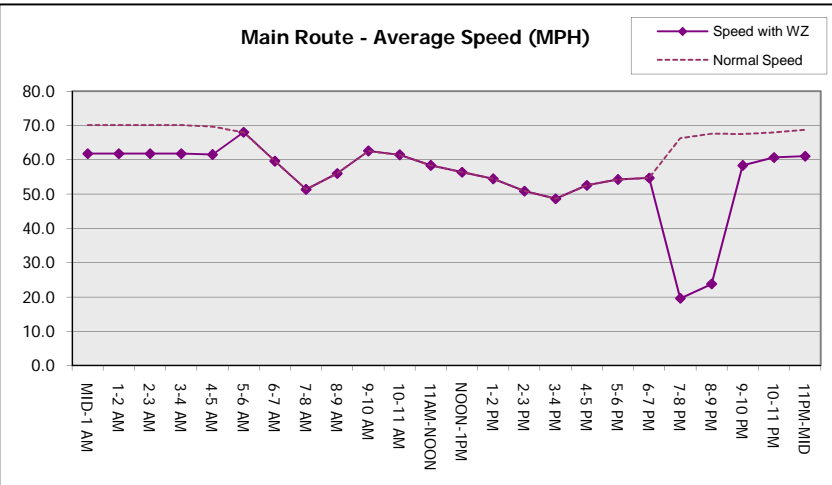
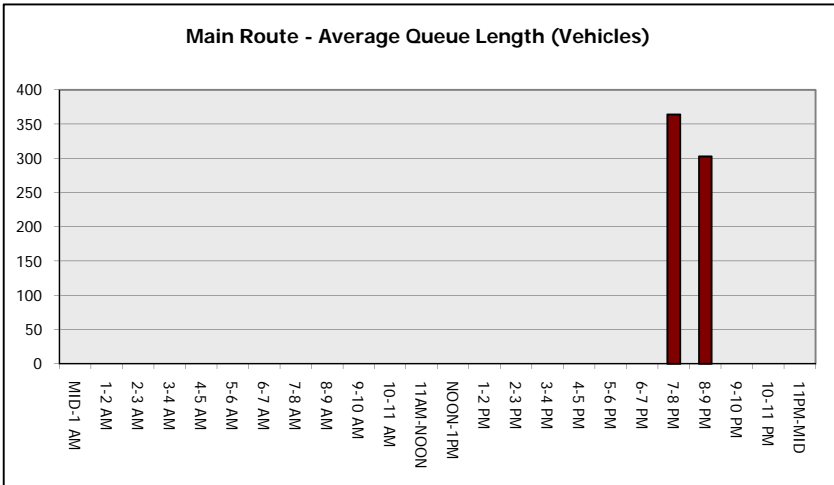
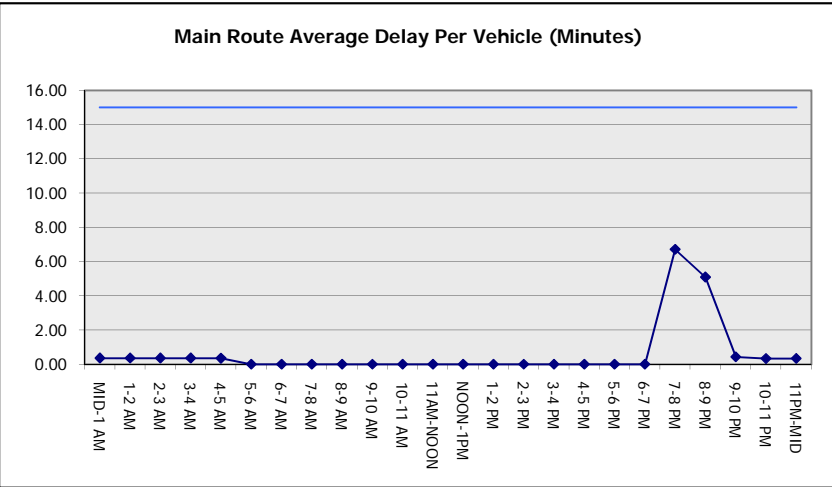
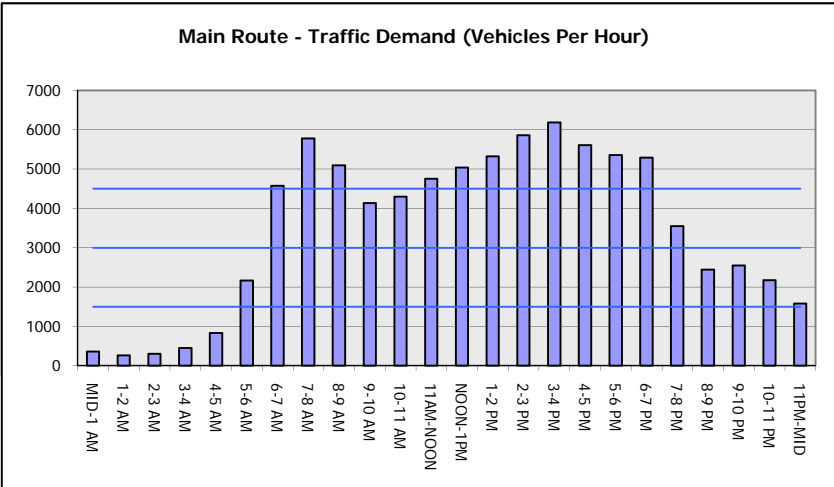
\*Delays Exceeding User-Specified Maximum

**IH 94: CTH O TO STH 100 (WAUKESHA COUNTY)**  
**NIGHTTIME CLOSURE**  
**NO DIVERSION ROUTE (MAX QUEUE METHOD)**

**OCTOBER**  
 Analyzed for 2009  
 Construction Season

**GRAPHICAL REPRESENTATION OF TRAFFIC MODEL INPUT AND OUTPUT**

**FRIDAY WESTBOUND DIRECTION**



<b>IH 94: CTH O TO STH 100 (WAUKESHA COUNTY)</b> <b>NIGHTTIME CLOSURE</b> <b>NO DIVERSION ROUTE (MAX QUEUE METHOD)</b>	<b>OCTOBER</b>
	Analyzed for 2009 Construction Season

**SUMMARY OF TRAFFIC MODEL OUTPUT**

FRIDAY EASTBOUND DIRECTION

TIME OF DAY	FLOWS AND CAPACITY IN VEH/HR						AVERAGE SPEEDS IN MPH			
	MAIN ROUTE		SITE CAPA CITY	FLOW		AV.DEL PER VEH (MINS)	AVERAGE QUEUE (VEH)	MAIN ROUTE		SITE
	DEMAND FLOW	PCT HEAVY		MAIN ROUTE	'DIVER TED'			WITHOUT WORK ZONE	WITH WORK ZONE	
MID-1 AM	312	0.0	3000	312	0	0.36	0	70.2	61.8	49.7
1-2 AM	223	0.0	3000	223	0	0.36	0	70.2	61.8	49.7
2-3 AM	264	0.0	3000	264	0	0.36	0	70.2	61.8	49.7
3-4 AM	402	0.0	3000	402	0	0.36	0	70.2	61.8	49.7
4-5 AM	711	0.0	3000	711	0	0.36	0	69.9	61.6	49.7
5-6 AM	2226	0.0	OFF	2226	0	0.00	0	67.9	67.9	67.9
6-7 AM	5331	0.0	OFF	5331	0	0.00	0	54.5	54.5	54.5
7-8 AM	6102	0.0	OFF	6102	0	0.00	0	49.2	49.2	49.2
8-9 AM	5154	0.0	OFF	5154	0	0.00	0	55.6	55.6	55.6
9-10 AM	4412	0.0	OFF	4412	0	0.00	0	60.7	60.7	60.7
10-11 AM	4082	0.0	OFF	4082	0	0.00	0	63.0	63.0	63.0
11AM-NOON	4440	0.0	OFF	4440	0	0.00	0	60.5	60.5	60.5
NOON-1PM	4689	0.0	OFF	4689	0	0.00	0	58.8	58.8	58.8
1-2 PM	4845	0.0	OFF	4845	0	0.00	0	57.8	57.8	57.8
2-3 PM	5593	0.0	OFF	5593	0	0.00	0	52.7	52.7	52.7
3-4 PM	5942	0.0	OFF	5942	0	0.00	0	50.2	50.2	50.2
4-5 PM	5705	0.0	OFF	5705	0	0.00	0	51.9	51.9	51.9
5-6 PM	5445	0.0	OFF	5445	0	0.00	0	53.7	53.7	53.7
6-7 PM	4751	0.0	OFF	4751	0	0.00	0	58.4	58.4	58.4
7-8 PM	3729	0.0	2999	3729	0	7.44	424	65.4	18.5	37.3
8-9 PM	2843	0.0	2999	2843	0	13.01	677	67.2	12.9	37.3
9-10 PM	2872	0.0	3000	2872	0	10.17	521	67.2	14.6	37.3
10-11 PM	2430	0.0	2999	2430	0	3.03	206	67.7	32.2	43.0
11PM-MID	1737	0.0	3000	1737	0	0.34	0	68.6	61.0	49.7

"OFF" INDICATES NO ROAD WORK (ALL LANES OPEN TO TRAFFIC)

*----- SITE BREAKDOWN DELAYS -----*	
BREAKDOWN DURATION (MINS)	0
RANGE OF QUEUE DELAY - MIN (VEH-H) MAX	0.0
AV BREAKDOWNS PER DAY	0.00
AV QUEUE DELAY/DAY (VEH-H)	0.0
AV TOTAL DELAY/DAY (VEH-H)	0.0

*----- SITE ACCIDENT DELAYS -----*	
BREAKDOWN DURATION (MINS)	0
RANGE OF QUEUE DELAY - MIN (VEH-H) MAX	0
AV BREAKDOWNS PER DAY	0
AV QUEUE DELAY/DAY (VEH-H)	0
AV TOTAL DELAY/DAY (VEH-H)	0

AVERAGE ACCIDENT NUMBERS (PIA/DAY)	
MAIN ROUTE WITHOUT WORKS	0.0416
MAIN ROUTE WITH WORKS	0.0405
'DIVERSION'	0.0000

PIA: Personal Injury Accidents

ECONOMIC IMPACT ON ROAD USERS	
ROAD USER COSTS PER DAY	\$25,958
CONGESTED HOURS PER DAY*	0

\*Delays Exceeding User-Specified Maximum

**IH 94: CTH O TO STH 100 (WAUKESHA COUNTY)  
NIGHTTIME CLOSURE  
NO DIVERSION ROUTE (MAX QUEUE METHOD)**

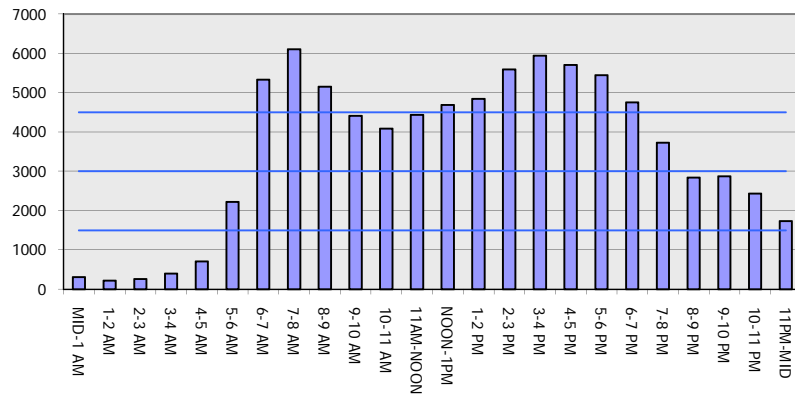
**OCTOBER**

Analyzed for 2009  
Construction Season

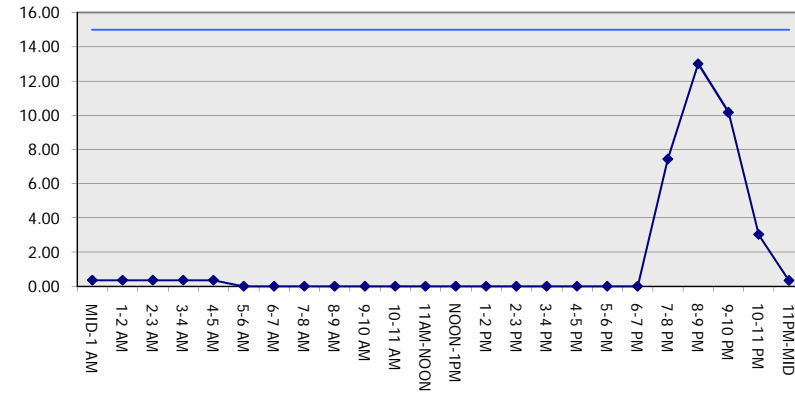
**GRAPHICAL REPRESENTATION OF TRAFFIC MODEL INPUT AND OUTPUT**

**FRIDAY EASTBOUND DIRECTION**

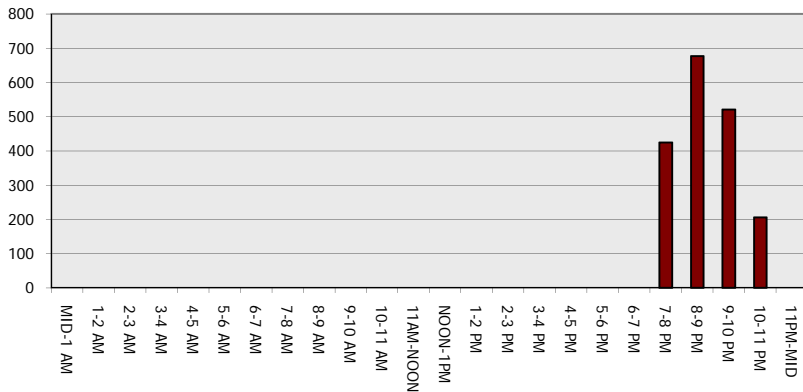
**Main Route - Traffic Demand (Vehicles Per Hour)**



**Main Route Average Delay Per Vehicle (Minutes)**



**Main Route - Average Queue Length (Vehicles)**



**Main Route - Average Speed (MPH)**

