

IH 94: CTH O TO STH 100 (WAUKESHA COUNTY) NIGHTTIME CLOSURE NO DIVERSION ROUTE (MAX QUEUE METHOD)	AUGUST
	Analyzed for 2009 Construction Season

SUMMARY OF TRAFFIC MODEL OUTPUT

SATURDAY WESTBOUND DIRECTION

TIME OF DAY	FLOWS AND CAPACITY IN VEH/HR						AVERAGE SPEEDS IN MPH			
	MAIN ROUTE		SITE CAPA CITY	FLOW		AV.DEL PER VEH (MINS)	AVERAGE QUEUE (VEH)	MAIN ROUTE		SITE
	DEMAND FLOW	PCT HEAVY		MAIN ROUTE	'DIVER TED'			WITHOUT WORK ZONE	WITH WORK ZONE	
MID-1 AM	751	0.0	3000	751	0	0.35	0	69.8	61.6	49.7
1-2 AM	677	0.0	3000	677	0	0.36	0	69.9	61.7	49.7
2-3 AM	621	0.0	3000	621	0	0.36	0	70.0	61.7	49.7
3-4 AM	449	0.0	3000	449	0	0.36	0	70.2	61.8	49.7
4-5 AM	538	0.0	3000	538	0	0.36	0	70.0	61.7	49.7
5-6 AM	667	0.0	3000	667	0	0.36	0	69.9	61.7	49.7
6-7 AM	1041	0.0	3000	1041	0	0.35	0	69.4	61.4	49.7
7-8 AM	1143	0.0	3000	1143	0	0.35	0	69.3	61.4	49.7
8-9 AM	2423	0.0	OFF	2423	0	0.00	0	67.8	67.8	67.8
9-10 AM	2113	0.0	OFF	2113	0	0.00	0	68.1	68.1	68.1
10-11 AM	2264	0.0	OFF	2264	0	0.00	0	67.9	67.9	67.9
11AM-NOON	3629	0.0	OFF	3629	0	0.00	0	66.1	66.1	66.1
NOON-1PM	4364	0.0	OFF	4364	0	0.00	0	61.0	61.0	61.0
1-2 PM	3542	0.0	OFF	3542	0	0.00	0	66.3	66.3	66.3
2-3 PM	2530	0.0	OFF	2530	0	0.00	0	67.6	67.6	67.6
3-4 PM	4503	0.0	OFF	4503	0	0.00	0	60.1	60.1	60.1
4-5 PM	4097	0.0	OFF	4097	0	0.00	0	62.8	62.8	62.8
5-6 PM	3673	0.0	OFF	3673	0	0.00	0	65.8	65.8	65.8
6-7 PM	3162	0.0	2999	3162	0	2.68	113	66.8	34.0	37.3
7-8 PM	2647	0.0	2999	2647	0	1.22	50	67.4	46.8	42.2
8-9 PM	2410	0.0	2999	2410	0	0.35	0	67.8	60.0	48.7
9-10 PM	3079	0.0	2999	3079	0	1.55	47	66.9	42.9	37.3
10-11 PM	2166	0.0	3000	2166	0	0.43	5	68.1	58.7	48.9
11PM-MID	968	0.0	3000	968	0	0.35	0	69.6	61.5	49.7

"OFF" INDICATES NO ROAD WORK (ALL LANES OPEN TO TRAFFIC)

----- SITE BREAKDOWN DELAYS -----	
BREAKDOWN DURATION (MINS)	0
RANGE OF QUEUE DELAY - MIN (VEH-H) MAX	0.0
AV BREAKDOWNS PER DAY	0.00
AV QUEUE DELAY/DAY (VEH-H)	0.0
AV TOTAL DELAY/DAY (VEH-H)	0.0

----- SITE ACCIDENT DELAYS -----	
BREAKDOWN DURATION (MINS)	0
RANGE OF QUEUE DELAY - MIN (VEH-H) MAX	0
AV BREAKDOWNS PER DAY	0
AV QUEUE DELAY/DAY (VEH-H)	0
AV TOTAL DELAY/DAY (VEH-H)	0

AVERAGE ACCIDENT NUMBERS (PIA/DAY)	
MAIN ROUTE WITHOUT WORKS	0.0264
MAIN ROUTE WITH WORKS	0.0250
'DIVERSION'	0.0000
PIA: Personal Injury Accidents	
IMPACTS ON ROAD USERS	
ROAD USER COSTS PER DAY	\$5,659
CONGESTED HOURS PER DAY*	0

*Delays Exceeding User-Specified Maximum

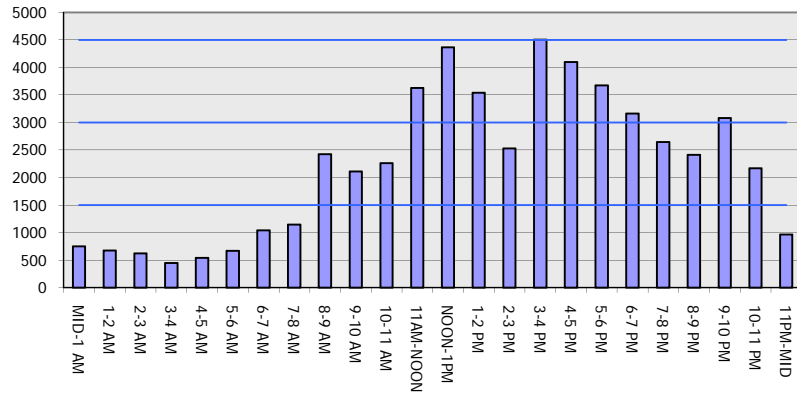
IH 94: CTH O TO STH 100 (WAUKESHA COUNTY)
NIGHTTIME CLOSURE
NO DIVERSION ROUTE (MAX QUEUE METHOD)

AUGUST
 Analyzed for 2009
 Construction Season

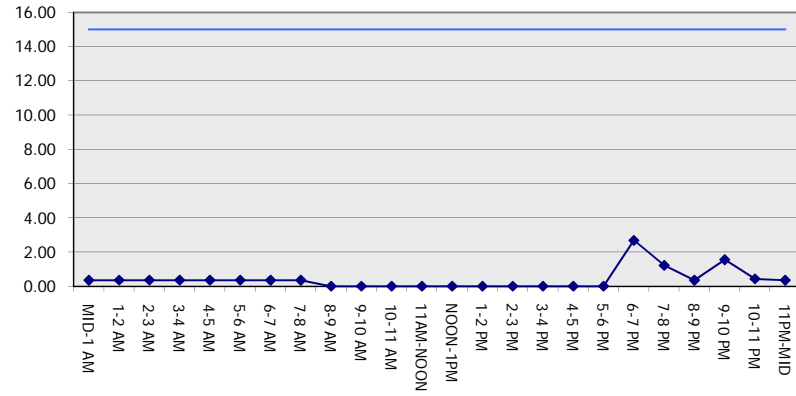
GRAPHICAL REPRESENTATION OF TRAFFIC MODEL INPUT AND OUTPUT

SATURDAY WESTBOUND DIRECTION

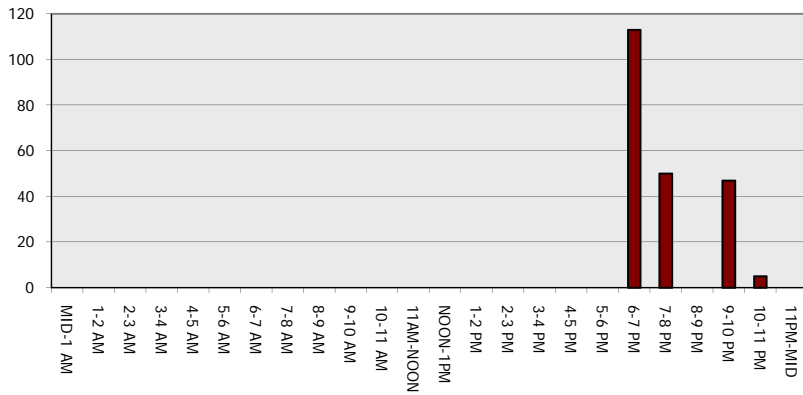
Main Route - Traffic Demand (Vehicles Per Hour)



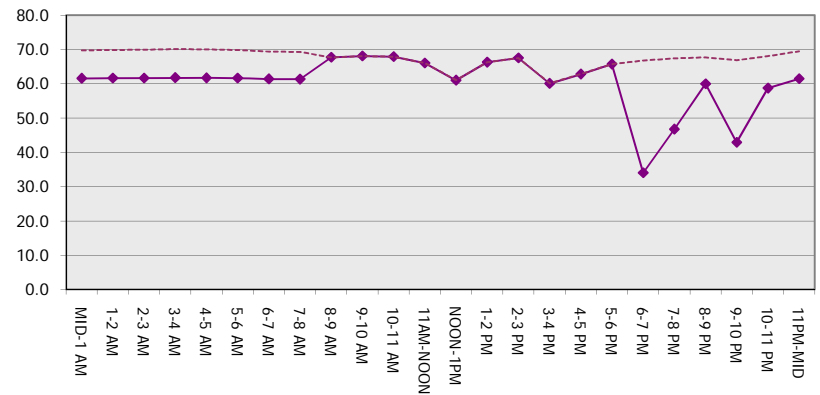
Main Route Average Delay Per Vehicle (Minutes)



Main Route - Average Queue Length (Vehicles)



Main Route - Average Speed (MPH)



IH 94: CTH O TO STH 100 (WAUKESHA COUNTY) NIGHTTIME CLOSURE NO DIVERSION ROUTE (MAX QUEUE METHOD)	AUGUST
	Analyzed for 2009 Construction Season

SUMMARY OF TRAFFIC MODEL OUTPUT

SATURDAY EASTBOUND DIRECTION

TIME OF DAY	FLOWS AND CAPACITY IN VEH/HR							AVERAGE SPEEDS IN MPH		
	MAIN ROUTE		SITE CAPA CITY	FLOW		AV.DEL PER VEH (MINS)	AVERAGE QUEUE (VEH)	MAIN ROUTE		SITE
	DEMAND FLOW	PCT HEAVY		MAIN ROUTE	'DIVER TED'			WITHOUT WORK ZONE	WITH WORK ZONE	
MID-1 AM	525	0.0	3000	525	0	0.36	0	70.1	61.7	49.7
1-2 AM	480	0.0	3000	480	0	0.36	0	70.1	61.8	49.7
2-3 AM	344	0.0	3000	344	0	0.36	0	70.2	61.8	49.7
3-4 AM	300	0.0	3000	300	0	0.36	0	70.2	61.8	49.7
4-5 AM	476	0.0	3000	476	0	0.36	0	70.1	61.8	49.7
5-6 AM	599	0.0	3000	599	0	0.36	0	70.0	61.7	49.7
6-7 AM	831	0.0	3000	831	0	0.35	0	69.7	61.5	49.7
7-8 AM	902	0.0	3000	902	0	0.35	0	69.6	61.5	49.7
8-9 AM	2130	0.0	OFF	2130	0	0.00	0	68.1	68.1	68.1
9-10 AM	1973	0.0	OFF	1973	0	0.00	0	68.3	68.3	68.3
10-11 AM	2227	0.0	OFF	2227	0	0.00	0	67.9	67.9	67.9
11AM-NOON	3955	0.0	OFF	3955	0	0.00	0	63.8	63.8	63.8
NOON-1PM	4420	0.0	OFF	4420	0	0.00	0	60.7	60.7	60.7
1-2 PM	3666	0.0	OFF	3666	0	0.00	0	65.8	65.8	65.8
2-3 PM	2659	0.0	OFF	2659	0	0.00	0	67.4	67.4	67.4
3-4 PM	4634	0.0	OFF	4634	0	0.00	0	59.2	59.2	59.2
4-5 PM	4529	0.0	OFF	4529	0	0.00	0	59.9	59.9	59.9
5-6 PM	4105	0.0	OFF	4105	0	0.00	0	62.8	62.8	62.8
6-7 PM	3602	0.0	2999	3602	0	5.99	334	66.3	21.2	37.3
7-8 PM	3025	0.0	2999	3025	0	12.39	642	66.9	13.2	37.3
8-9 PM	2689	0.0	2999	2689	0	9.25	478	67.4	15.7	37.3
9-10 PM	2784	0.0	3000	2784	0	4.71	229	67.3	24.8	37.8
10-11 PM	1996	0.0	3000	1996	0	0.43	6	68.2	59.0	49.7
11PM-MID	650	0.0	3000	650	0	0.36	0	69.9	61.7	49.7

"OFF" INDICATES NO ROAD WORK (ALL LANES OPEN TO TRAFFIC)

----- SITE BREAKDOWN DELAYS -----	
BREAKDOWN DURATION (MINS)	0
RANGE OF QUEUE DELAY - MIN	0.0
(VEH-H) MAX	0.0
AV BREAKDOWNS PER DAY	0.00
AV QUEUE DELAY/DAY (VEH-H)	0.0
AV TOTAL DELAY/DAY (VEH-H)	0.0

----- SITE ACCIDENT DELAYS -----	
BREAKDOWN DURATION (MINS)	0
RANGE OF QUEUE DELAY - MIN	0
(VEH-H) MAX	0
AV BREAKDOWNS PER DAY	0
AV QUEUE DELAY/DAY (VEH-H)	0
AV TOTAL DELAY/DAY (VEH-H)	0

AVERAGE ACCIDENT NUMBERS (PIA/DAY)	
MAIN ROUTE WITHOUT WORKS	0.0264
MAIN ROUTE WITH WORKS	0.0251
'DIVERSION'	0.0000

PIA: Personal Injury Accidents

ECONOMIC IMPACT ON ROAD USERS	
ROAD USER COSTS PER DAY	\$27,290
CONGESTED HOURS PER DAY*	0

*Delays Exceeding User-Specified Maximum

**IH 94: CTH O TO STH 100 (WAUKESHA COUNTY)
NIGHTTIME CLOSURE
NO DIVERSION ROUTE (MAX QUEUE METHOD)**

AUGUST
Analyzed for 2009
Construction Season

GRAPHICAL REPRESENTATION OF TRAFFIC MODEL INPUT AND OUTPUT
SATURDAY EASTBOUND DIRECTION

