

**IH 94: CTH O TO STH 100 (WAUKESHA COUNTY)  
NIGHTTIME 2 LANE CLOSURE  
NO DIVERSION ROUTE (MAX QUEUE METHOD)**

**AUGUST**  
Analyzed for 2009  
Construction Season

**SUMMARY OF TRAFFIC MODEL OUTPUT**  
FRIDAY WESTBOUND DIRECTION

TIME OF DAY	FLOWS AND CAPACITY IN VEH/HR						AVERAGE SPEEDS IN MPH			
	MAIN ROUTE		SITE CAPA CITY	FLOW		AV.DEL PER VEH (MINS)	AVERAGE QUEUE (VEH)	MAIN ROUTE		SITE
	DEMAND FLOW	PCT HEAVY		MAIN ROUTE	'DIVER TED'			WITHOUT WORK ZONE	WITH WORK ZONE	
MID-1 AM	149	0.0	*****	149	0	1.31	61	70.2	46.9	44.5
1-2 AM	26	0.0	1500	26	0	0.48	0	70.2	59.5	45.4
2-3 AM	161	0.0	1500	161	0	0.49	0	70.2	59.2	44.8
3-4 AM	24	0.0	1500	24	0	0.48	0	70.2	59.5	45.4
4-5 AM	75	0.0	1500	75	0	0.48	0	70.2	59.4	45.2
5-6 AM	148	0.0	OFF	148	0	0.00	0	70.2	70.2	70.2
6-7 AM	213	0.0	OFF	213	0	0.00	0	70.2	70.2	70.2
7-8 AM	151	0.0	OFF	151	0	0.00	0	70.2	70.2	70.2
8-9 AM	3246	0.0	OFF	3246	0	0.00	0	66.7	66.7	66.7
9-10 AM	2363	0.0	OFF	2363	0	0.00	0	67.8	67.8	67.8
10-11 AM	1522	0.0	OFF	1522	0	0.00	0	68.9	68.9	68.9
11AM-NOON	2196	0.0	OFF	2196	0	0.00	0	68.0	68.0	68.0
NOON-1PM	152	0.0	OFF	152	0	0.00	0	70.2	70.2	70.2
1-2 PM	2823	0.0	OFF	2823	0	0.00	0	67.3	67.3	67.3
2-3 PM	4964	0.0	OFF	4964	0	0.00	0	56.9	56.9	56.9
3-4 PM	5384	0.0	OFF	5384	0	0.00	0	54.1	54.1	54.1
4-5 PM	5218	0.0	OFF	5218	0	0.00	0	55.2	55.2	55.2
5-6 PM	5462	0.0	OFF	5462	0	0.00	0	53.5	53.5	53.5
6-7 PM	4132	0.0	OFF	4132	0	0.00	0	62.6	62.6	62.6
7-8 PM	3291	0.0	1499	1550	1741	16.49+	412	66.6	9.6	36.6
8-9 PM	3007	0.0	1499	1603	1404	14.31+	379	67.0	10.9	36.0
9-10 PM	2603	0.0	1499	1774	829	14.89+	373	67.5	10.6	32.4
10-11 PM	2305	0.0	1499	1500	805	16.34+	399	67.9	9.7	30.8
11PM-MID	1826	0.0	1500	1457	369	16.18+	395	68.4	9.8	30.8

"OFF" INDICATES NO ROAD WORK (ALL LANES OPEN TO TRAFFIC)

+ INDICATES QUEUEING EXCEEDS USER-SPECIFIED MAXIMUM LIMIT

\*----- SITE BREAKDOWN DELAYS -----\*

BREAKDOWN DURATION (MINS)	0
RANGE OF QUEUE DELAY - MIN (VEH-H) MAX	0.0
AV BREAKDOWNS PER DAY	0.00
AV QUEUE DELAY/DAY (VEH-H)	0.0
AV TOTAL DELAY/DAY (VEH-H)	0.0

\*----- SITE ACCIDENT DELAYS -----\*

BREAKDOWN DURATION (MINS)	0
RANGE OF QUEUE DELAY - MIN (VEH-H) MAX	0
AV BREAKDOWNS PER DAY	0
AV QUEUE DELAY/DAY (VEH-H)	0
AV TOTAL DELAY/DAY (VEH-H)	0

**AVERAGE ACCIDENT NUMBERS (PIA/DAY)**

MAIN ROUTE WITHOUT WORKS	0.0254
MAIN ROUTE WITH WORKS	0.0223
'DIVERSION'	0.0059

PIA: Personal Injury Accidents

**IMPACTS ON ROAD USERS**

ROAD USER COSTS PER DAY	#VALUE!
CONGESTED HOURS PER DAY*	5

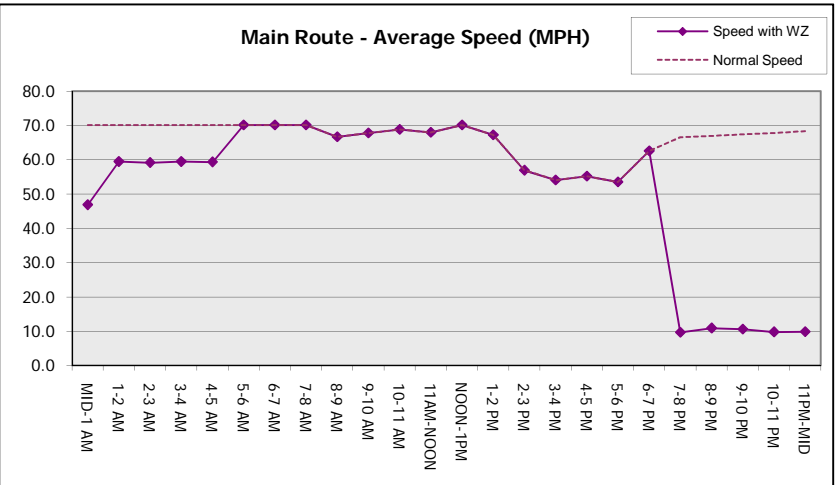
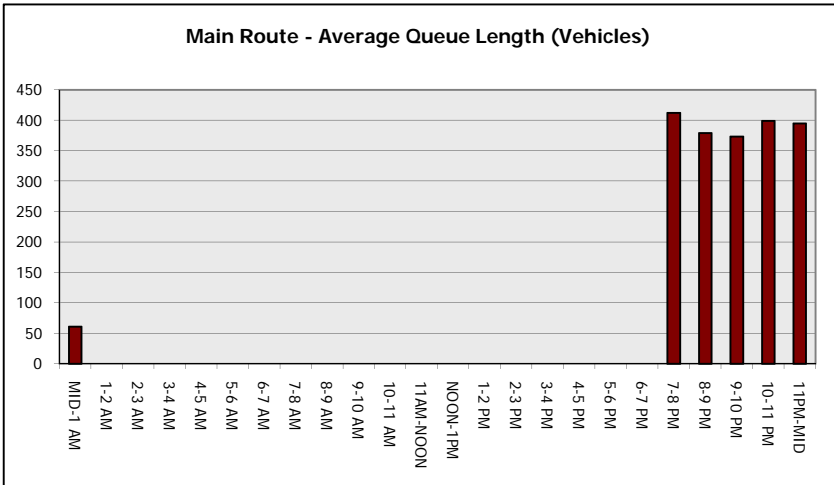
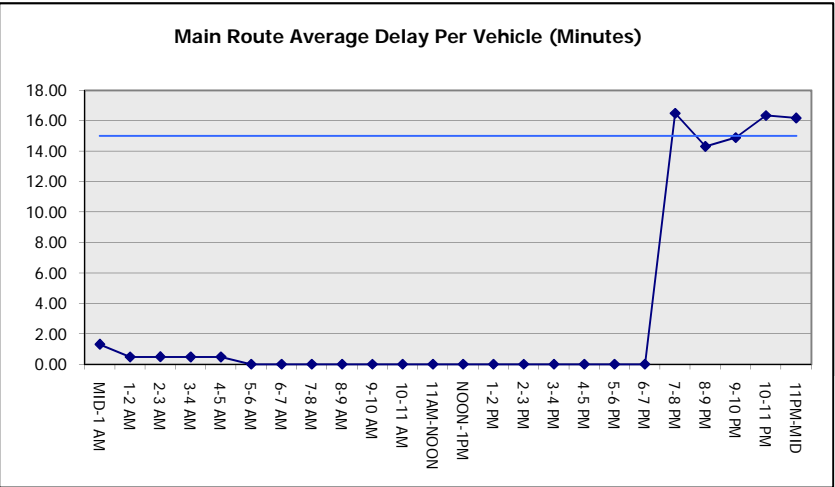
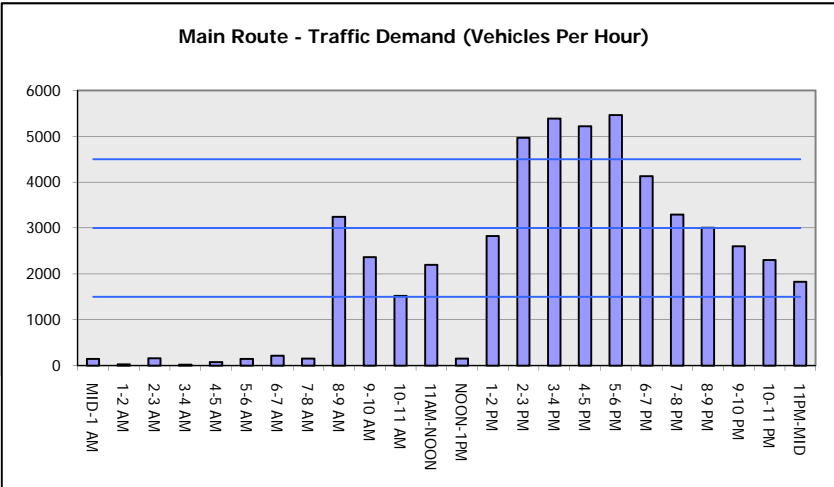
\*Delays Exceeding User-Specified Maximum

**IH 94: CTH O TO STH 100 (WAUKESHA COUNTY)  
NIGHTTIME 2 LANE CLOSURE  
NO DIVERSION ROUTE (MAX QUEUE METHOD)**

**AUGUST**  
Analyzed for 2009  
Construction Season

**GRAPHICAL REPRESENTATION OF TRAFFIC MODEL INPUT AND OUTPUT**

**FRIDAY WESTBOUND DIRECTION**



<b>IH 94: CTH O TO STH 100 (WAUKESHA COUNTY)</b> <b>NIGHTTIME 2 LANE CLOSURE</b> <b>NO DIVERSION ROUTE (MAX QUEUE METHOD)</b>	<b>AUGUST</b>
	Analyzed for 2009 Construction Season

**SUMMARY OF TRAFFIC MODEL OUTPUT**

FRIDAY EASTBOUND DIRECTION

TIME OF DAY	FLOWS AND CAPACITY IN VEH/HR						AVERAGE SPEEDS IN MPH			
	MAIN ROUTE		SITE CAPA CITY	FLOW		AV.DEL PER VEH (MINS)	AVERAGE QUEUE (VEH)	MAIN ROUTE		SITE
	DEMAND FLOW	PCT HEAVY		MAIN ROUTE	'DIVER TED'			WITHOUT WORK ZONE	WITH WORK ZONE	
MID-1 AM	88	0.0	750	88	0	1.12	45	70.2	49.4	44.8
1-2 AM	26	0.0	1500	26	0	0.48	0	70.2	59.5	45.4
2-3 AM	102	0.0	1500	102	0	0.48	0	70.2	59.3	45.1
3-4 AM	14	0.0	1500	14	0	0.47	0	70.2	59.6	45.5
4-5 AM	75	0.0	1500	75	0	0.48	0	70.2	59.4	45.2
5-6 AM	97	0.0	OFF	97	0	0.00	0	70.2	70.2	70.2
6-7 AM	246	0.0	OFF	246	0	0.00	0	70.2	70.2	70.2
7-8 AM	132	0.0	OFF	132	0	0.00	0	70.2	70.2	70.2
8-9 AM	3178	0.0	OFF	3178	0	0.00	0	66.8	66.8	66.8
9-10 AM	2346	0.0	OFF	2346	0	0.00	0	67.8	67.8	67.8
10-11 AM	1469	0.0	OFF	1469	0	0.00	0	68.9	68.9	68.9
11AM-NOON	2157	0.0	OFF	2157	0	0.00	0	68.1	68.1	68.1
NOON-1PM	117	0.0	OFF	117	0	0.00	0	70.2	70.2	70.2
1-2 PM	2342	0.0	OFF	2342	0	0.00	0	67.8	67.8	67.8
2-3 PM	5085	0.0	OFF	5085	0	0.00	0	56.1	56.1	56.1
3-4 PM	5502	0.0	OFF	5502	0	0.00	0	53.3	53.3	53.3
4-5 PM	5276	0.0	OFF	5276	0	0.00	0	54.8	54.8	54.8
5-6 PM	5137	0.0	OFF	5137	0	0.00	0	55.8	55.8	55.8
6-7 PM	4132	0.0	OFF	4132	0	0.00	0	62.6	62.6	62.6
7-8 PM	3410	0.0	1499	1550	1860	16.48+	412	66.5	9.6	36.6
8-9 PM	2920	0.0	1499	1595	1325	14.31+	379	67.1	10.9	36.0
9-10 PM	2676	0.0	1499	1780	896	14.84+	373	67.4	10.6	32.6
10-11 PM	2150	0.0	1499	1500	650	16.34+	399	68.1	9.7	30.8
11PM-MID	1625	0.0	1500	1421	204	16.02+	391	68.7	9.9	30.8

"OFF" INDICATES NO ROAD WORK (ALL LANES OPEN TO TRAFFIC)

+ INDICATES QUEUEING EXCEEDS USER-SPECIFIED MAXIMUM LIMIT

*----- SITE BREAKDOWN DELAYS -----*	
BREAKDOWN DURATION (MINS)	0
RANGE OF QUEUE DELAY - MIN (VEH-H) MAX	0.0
AV BREAKDOWNS PER DAY	0.00
AV QUEUE DELAY/DAY (VEH-H)	0.0
AV TOTAL DELAY/DAY (VEH-H)	0.0

*----- SITE ACCIDENT DELAYS -----*	
BREAKDOWN DURATION (MINS)	0
RANGE OF QUEUE DELAY - MIN (VEH-H) MAX	0
AV BREAKDOWNS PER DAY	0
AV QUEUE DELAY/DAY (VEH-H)	0
AV TOTAL DELAY/DAY (VEH-H)	0

AVERAGE ACCIDENT NUMBERS (PIA/DAY)	
MAIN ROUTE WITHOUT WORKS	0.0248
MAIN ROUTE WITH WORKS	0.0218
'DIVERSION'	0.0056

PIA: Personal Injury Accidents

ECONOMIC IMPACT ON ROAD USERS	
ROAD USER COSTS PER DAY	#VALUE!
CONGESTED HOURS PER DAY*	5

\*Delays Exceeding User-Specified Maximum

**IH 94: CTH O TO STH 100 (WAUKESHA COUNTY)  
NIGHTTIME 2 LANE CLOSURE  
NO DIVERSION ROUTE (MAX QUEUE METHOD)**

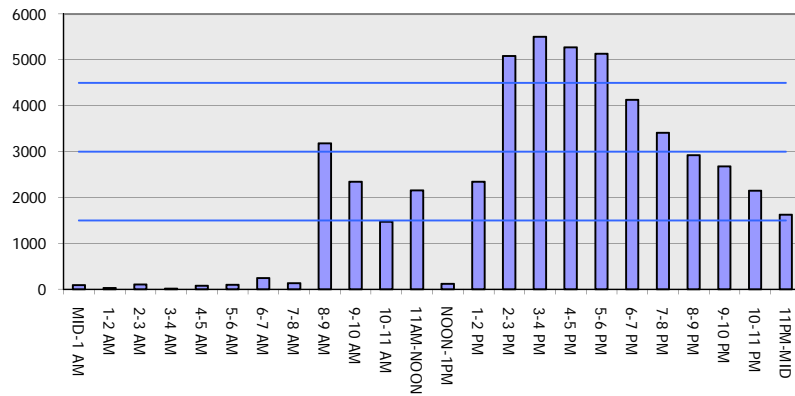
**AUGUST**

Analyzed for 2009  
Construction Season

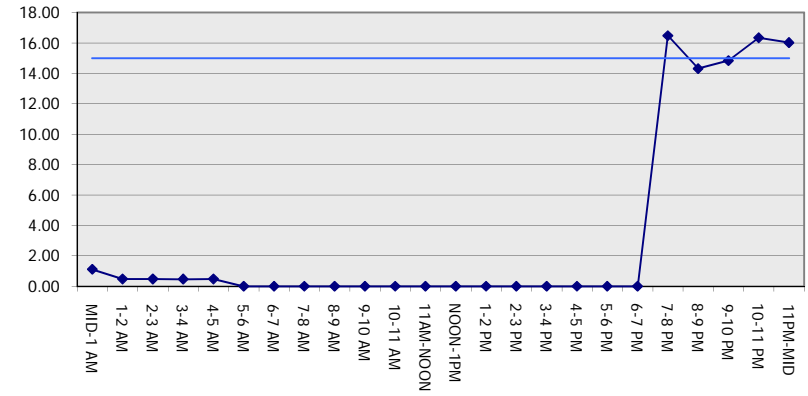
**GRAPHICAL REPRESENTATION OF TRAFFIC MODEL INPUT AND OUTPUT**

**FRIDAY EASTBOUND DIRECTION**

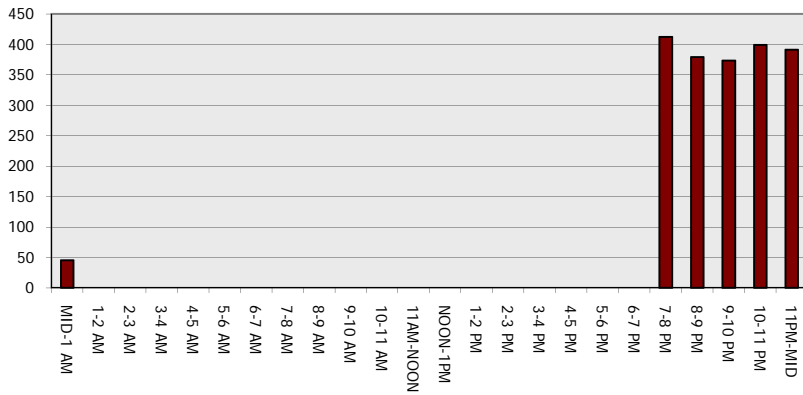
**Main Route - Traffic Demand (Vehicles Per Hour)**



**Main Route Average Delay Per Vehicle (Minutes)**



**Main Route - Average Queue Length (Vehicles)**



**Main Route - Average Speed (MPH)**

