

IH 94: STH 100/RYAN RD TO STH 20 (MILWAUKEE AND RACINE COUNTIES) NIGHTTIME 2 LANE CLOSURE NO DIVERSION ROUTE (MAX QUEUE METHOD)	OCTOBER
	Analyzed for 2009 Construction Season

SUMMARY OF TRAFFIC MODEL OUTPUT

MON-THUR WESTBOUND DIRECTION

TIME OF DAY	FLOWS AND CAPACITY IN VEH/HR						AVERAGE SPEEDS IN MPH			
	MAIN ROUTE		SITE CAPA CITY	FLOW		AV.DEL PER VEH (MINS)	AVERAGE QUEUE (VEH)	MAIN ROUTE		SITE
	DEMAND FLOW	PCT HEAVY		MAIN ROUTE	'DIVER TED'			WITHOUT WORK ZONE	WITH WORK ZONE	
MID-1 AM	496	0.0	1500	496	0	0.43	0	70.2	66.9	46.9
1-2 AM	381	0.0	1500	381	0	0.42	0	70.2	67.0	47.4
2-3 AM	362	0.0	1500	362	0	0.41	0	70.2	67.1	47.5
3-4 AM	429	0.0	1500	429	0	0.42	0	70.2	67.0	47.3
4-5 AM	714	0.0	1500	714	0	0.46	0	70.2	66.8	46.0
5-6 AM	1758	0.0	OFF	1758	0	0.00	0	69.9	69.9	69.9
6-7 AM	3260	0.0	OFF	3260	0	0.00	0	68.0	68.0	68.0
7-8 AM	3515	0.0	OFF	3515	0	0.00	0	67.7	67.7	67.7
8-9 AM	2660	0.0	OFF	2660	0	0.00	0	68.7	68.7	68.7
9-10 AM	2337	0.0	OFF	2337	0	0.00	0	69.1	69.1	69.1
10-11 AM	2331	0.0	OFF	2331	0	0.00	0	69.1	69.1	69.1
11AM-NOON	2382	0.0	OFF	2382	0	0.00	0	69.1	69.1	69.1
NOON-1PM	2485	0.0	OFF	2485	0	0.00	0	68.9	68.9	68.9
1-2 PM	2507	0.0	OFF	2507	0	0.00	0	68.9	68.9	68.9
2-3 PM	2711	0.0	OFF	2711	0	0.00	0	68.7	68.7	68.7
3-4 PM	2984	0.0	OFF	2984	0	0.00	0	68.3	68.3	68.3
4-5 PM	3141	0.0	OFF	3141	0	0.00	0	68.1	68.1	68.1
5-6 PM	3017	0.0	OFF	3017	0	0.00	0	68.3	68.3	68.3
6-7 PM	2344	0.0	OFF	2344	0	0.00	0	69.1	69.1	69.1
7-8 PM	1608	0.0	1499	1608	0	4.12	83	70.0	47.9	32.5
8-9 PM	1400	0.0	1499	1400	0	3.51	68	70.2	50.3	33.3
9-10 PM	1260	0.0	1500	1260	0	0.70	0	70.2	65.0	39.1
10-11 PM	1009	0.0	1500	1009	0	0.49	0	70.2	66.4	44.8
11PM-MID	716	0.0	1500	716	0	0.46	0	70.2	66.8	46.0

"OFF" INDICATES NO ROAD WORK (ALL LANES OPEN TO TRAFFIC)

----- SITE BREAKDOWN DELAYS -----	
BREAKDOWN DURATION (MINS)	0
RANGE OF QUEUE DELAY - MIN (VEH-H) MAX	0.0
AV BREAKDOWNS PER DAY	0.00
AV QUEUE DELAY/DAY (VEH-H)	0.0
AV TOTAL DELAY/DAY (VEH-H)	0.0

----- SITE ACCIDENT DELAYS -----	
BREAKDOWN DURATION (MINS)	0
RANGE OF QUEUE DELAY - MIN (VEH-H) MAX	0
AV BREAKDOWNS PER DAY	0
AV QUEUE DELAY/DAY (VEH-H)	0
AV TOTAL DELAY/DAY (VEH-H)	0

AVERAGE ACCIDENT NUMBERS (PIA/DAY)	
MAIN ROUTE WITHOUT WORKS	0.0758
MAIN ROUTE WITH WORKS	0.0753
'DIVERSION'	0.0000
<small>PIA: Personal Injury Accidents</small>	
IMPACTS ON ROAD USERS	
ROAD USER COSTS PER DAY	\$3,234
CONGESTED HOURS PER DAY*	0

*Delays Exceeding User-Specified Maximum

IH 94: STH 100/RYAN RD TO STH 20 (MILWAUKEE AND RACINE COUNTIES)
NIGHTTIME 2 LANE CLOSURE
NO DIVERSION ROUTE (MAX QUEUE METHOD)

OCTOBER

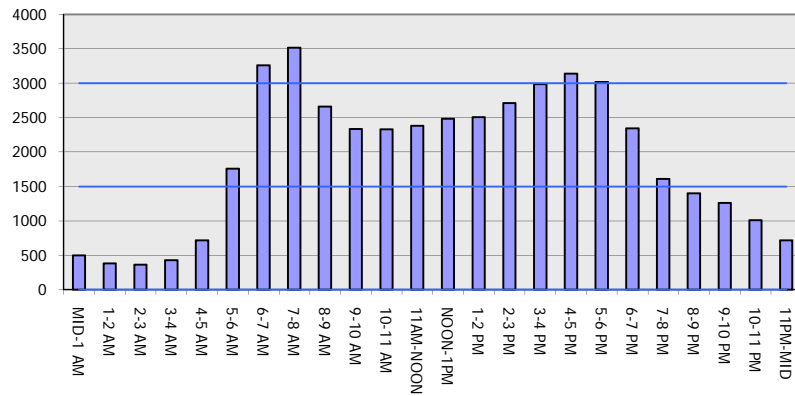
Analyzed for 2009
 Construction Season

GRAPHICAL REPRESENTATION OF TRAFFIC MODEL INPUT AND OUTPUT

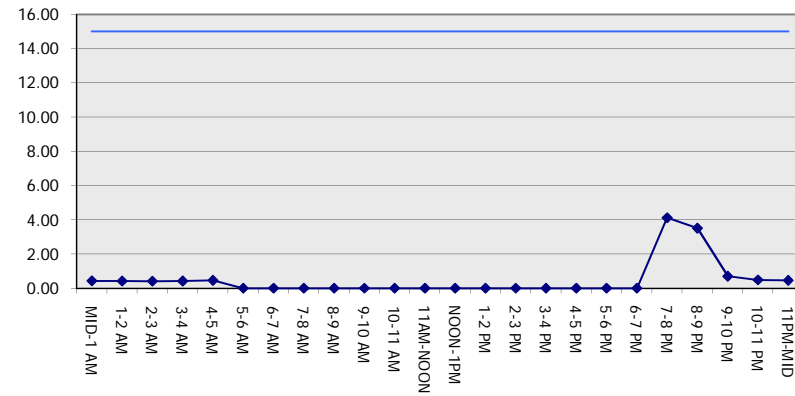
MON-THUR

WESTBOUND DIRECTION

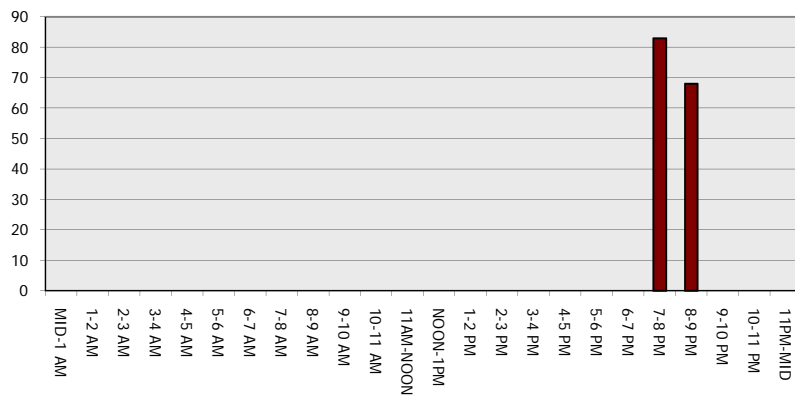
Main Route - Traffic Demand (Vehicles Per Hour)



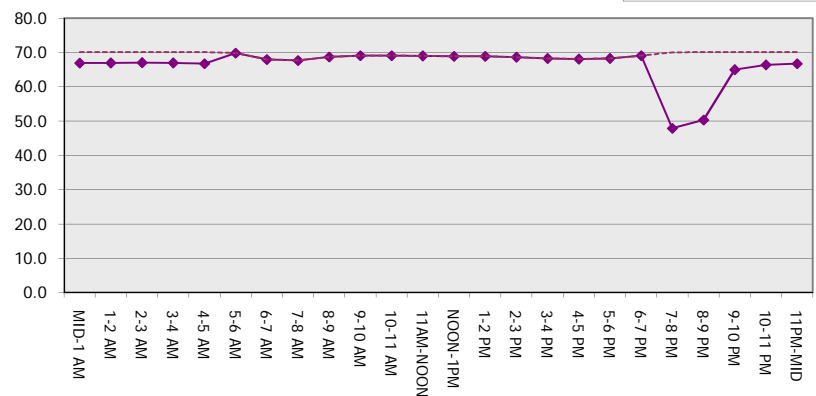
Main Route Average Delay Per Vehicle (Minutes)



Main Route - Average Queue Length (Vehicles)



Main Route - Average Speed (MPH)



IH 94: STH 100/RYAN RD TO STH 20 (MILWAUKEE AND RACINE COUNTIES) NIGHTTIME 2 LANE CLOSURE NO DIVERSION ROUTE (MAX QUEUE METHOD)	OCTOBER
	Analyzed for 2009 Construction Season

SUMMARY OF TRAFFIC MODEL OUTPUT

MON-THUR EASTBOUND DIRECTION

TIME OF DAY	FLOWS AND CAPACITY IN VEH/HR						AVERAGE SPEEDS IN MPH			
	MAIN ROUTE		SITE CAPA CITY	FLOW		AV.DEL PER VEH (MINS)	AVERAGE QUEUE (VEH)	MAIN ROUTE		SITE
	DEMAND FLOW	PCT HEAVY		MAIN ROUTE	'DIVER TED'			WITHOUT WORK ZONE	WITH WORK ZONE	
MID-1 AM	507	0.0	1500	507	0	0.43	0	70.2	66.9	46.9
1-2 AM	390	0.0	1500	390	0	0.42	0	70.2	67.0	47.4
2-3 AM	369	0.0	1500	369	0	0.42	0	70.2	67.1	47.5
3-4 AM	420	0.0	1500	420	0	0.42	0	70.2	67.0	47.3
4-5 AM	696	0.0	1500	696	0	0.46	0	70.2	66.8	46.1
5-6 AM	1296	0.0	OFF	1296	0	0.00	0	70.2	70.2	70.2
6-7 AM	2284	0.0	OFF	2284	0	0.00	0	69.2	69.2	69.2
7-8 AM	2795	0.0	OFF	2795	0	0.00	0	68.6	68.6	68.6
8-9 AM	2615	0.0	OFF	2615	0	0.00	0	68.8	68.8	68.8
9-10 AM	2432	0.0	OFF	2432	0	0.00	0	69.0	69.0	69.0
10-11 AM	2339	0.0	OFF	2339	0	0.00	0	69.1	69.1	69.1
11AM-NOON	2422	0.0	OFF	2422	0	0.00	0	69.1	69.1	69.1
NOON-1PM	2528	0.0	OFF	2528	0	0.00	0	68.9	68.9	68.9
1-2 PM	2684	0.0	OFF	2684	0	0.00	0	68.7	68.7	68.7
2-3 PM	2911	0.0	OFF	2911	0	0.00	0	68.4	68.4	68.4
3-4 PM	3324	0.0	OFF	3324	0	0.00	0	67.9	67.9	67.9
4-5 PM	3527	0.0	OFF	3527	0	0.00	0	67.6	67.6	67.6
5-6 PM	3662	0.0	OFF	3662	0	0.00	0	67.1	67.1	67.1
6-7 PM	2581	0.0	OFF	2581	0	0.00	0	68.8	68.8	68.8
7-8 PM	1851	0.0	1499	1851	0	8.34	209	69.7	36.1	32.5
8-9 PM	1499	0.0	1499	1499	0	14.97	365	70.2	26.1	32.5
9-10 PM	1376	0.0	1500	1376	0	12.54	303	70.2	29.1	32.5
10-11 PM	988	0.0	1499	988	0	2.26	58	70.2	56.0	42.4
11PM-MID	800	0.0	1500	800	0	0.47	0	70.2	66.6	45.6

"OFF" INDICATES NO ROAD WORK (ALL LANES OPEN TO TRAFFIC)

----- SITE BREAKDOWN DELAYS -----	
BREAKDOWN DURATION (MINS)	0
RANGE OF QUEUE DELAY - MIN (VEH-H) MAX	0.0
AV BREAKDOWNS PER DAY	0.00
AV QUEUE DELAY/DAY (VEH-H)	0.0
AV TOTAL DELAY/DAY (VEH-H)	0.0

----- SITE ACCIDENT DELAYS -----	
BREAKDOWN DURATION (MINS)	0
RANGE OF QUEUE DELAY - MIN (VEH-H) MAX	0
AV BREAKDOWNS PER DAY	0
AV QUEUE DELAY/DAY (VEH-H)	0
AV TOTAL DELAY/DAY (VEH-H)	0

AVERAGE ACCIDENT NUMBERS (PIA/DAY)	
MAIN ROUTE WITHOUT WORKS	0.0766
MAIN ROUTE WITH WORKS	0.0760
'DIVERSION'	0.0000

PIA: Personal Injury Accidents

ECONOMIC IMPACT ON ROAD USERS	
ROAD USER COSTS PER DAY	\$13,314
CONGESTED HOURS PER DAY*	0

*Delays Exceeding User-Specified Maximum

IH 94: STH 100/RYAN RD TO STH 20 (MILWAUKEE AND RACINE COUNTIES)
NIGHTTIME 2 LANE CLOSURE
NO DIVERSION ROUTE (MAX QUEUE METHOD)

OCTOBER

Analyzed for 2009
 Construction Season

GRAPHICAL REPRESENTATION OF TRAFFIC MODEL INPUT AND OUTPUT
MON-THUR EASTBOUND DIRECTION

