

IH 94: STH 100/RYAN RD TO STH 20 (MILWAUKEE AND RACINE COUNTIES) NIGHTTIME CLOSURE NO DIVERSION ROUTE (MAX QUEUE METHOD)	OCTOBER
	Analyzed for 2009 Construction Season

SUMMARY OF TRAFFIC MODEL OUTPUT

FRIDAY WESTBOUND DIRECTION

TIME OF DAY	FLOWS AND CAPACITY IN VEH/HR						AVERAGE SPEEDS IN MPH			
	MAIN ROUTE		SITE CAPA CITY	FLOW		AV.DEL PER VEH (MINS)	AVERAGE QUEUE (VEH)	MAIN ROUTE		SITE
	DEMAND FLOW	PCT HEAVY		MAIN ROUTE	'DIVER TED'			WITHOUT WORK ZONE	WITH WORK ZONE	
MID-1 AM	589	0.0	3000	589	0	0.36	0	70.2	67.4	49.7
1-2 AM	472	0.0	3000	472	0	0.36	0	70.2	67.4	49.7
2-3 AM	452	0.0	3000	452	0	0.36	0	70.2	67.4	49.7
3-4 AM	530	0.0	3000	530	0	0.36	0	70.2	67.4	49.7
4-5 AM	751	0.0	3000	751	0	0.36	0	70.2	67.4	49.7
5-6 AM	1818	0.0	OFF	1818	0	0.00	0	69.8	69.8	69.8
6-7 AM	3069	0.0	OFF	3069	0	0.00	0	68.2	68.2	68.2
7-8 AM	3407	0.0	OFF	3407	0	0.00	0	67.8	67.8	67.8
8-9 AM	2777	0.0	OFF	2777	0	0.00	0	68.6	68.6	68.6
9-10 AM	2610	0.0	OFF	2610	0	0.00	0	68.8	68.8	68.8
10-11 AM	2868	0.0	OFF	2868	0	0.00	0	68.5	68.5	68.5
11AM-NOON	3044	0.0	OFF	3044	0	0.00	0	68.2	68.2	68.2
NOON-1PM	3155	0.0	OFF	3155	0	0.00	0	68.1	68.1	68.1
1-2 PM	3283	0.0	OFF	3283	0	0.00	0	67.9	67.9	67.9
2-3 PM	3704	0.0	OFF	3704	0	0.00	0	66.9	66.9	66.9
3-4 PM	3771	0.0	OFF	3771	0	0.00	0	66.4	66.4	66.4
4-5 PM	3905	0.0	OFF	3905	0	0.00	0	65.5	65.5	65.5
5-6 PM	3759	0.0	OFF	3759	0	0.00	0	66.4	66.4	66.4
6-7 PM	3311	0.0	OFF	3311	0	0.00	0	67.9	67.9	67.9
7-8 PM	2777	0.0	3000	2777	0	0.62	0	68.6	64.2	40.5
8-9 PM	2315	0.0	3000	2315	0	0.35	0	69.2	66.6	49.7
9-10 PM	1941	0.0	3000	1941	0	0.35	0	69.6	67.0	49.7
10-11 PM	1438	0.0	3000	1438	0	0.36	0	70.2	67.4	49.7
11PM-MID	1053	0.0	3000	1053	0	0.36	0	70.2	67.4	49.7

"OFF" INDICATES NO ROAD WORK (ALL LANES OPEN TO TRAFFIC)

----- SITE BREAKDOWN DELAYS -----	
BREAKDOWN DURATION (MINS)	0
RANGE OF QUEUE DELAY - MIN (VEH-H) MAX	0.0
AV BREAKDOWNS PER DAY	0.00
AV QUEUE DELAY/DAY (VEH-H)	0.0
AV TOTAL DELAY/DAY (VEH-H)	0.0

----- SITE ACCIDENT DELAYS -----	
BREAKDOWN DURATION (MINS)	0
RANGE OF QUEUE DELAY - MIN (VEH-H) MAX	0
AV BREAKDOWNS PER DAY	0
AV QUEUE DELAY/DAY (VEH-H)	0
AV TOTAL DELAY/DAY (VEH-H)	0

AVERAGE ACCIDENT NUMBERS (PIA/DAY)	
MAIN ROUTE WITHOUT WORKS	0.0940
MAIN ROUTE WITH WORKS	0.0932
'DIVERSION'	0.0000
PIA: Personal Injury Accidents	
IMPACTS ON ROAD USERS	
ROAD USER COSTS PER DAY	\$1,044
CONGESTED HOURS PER DAY*	0

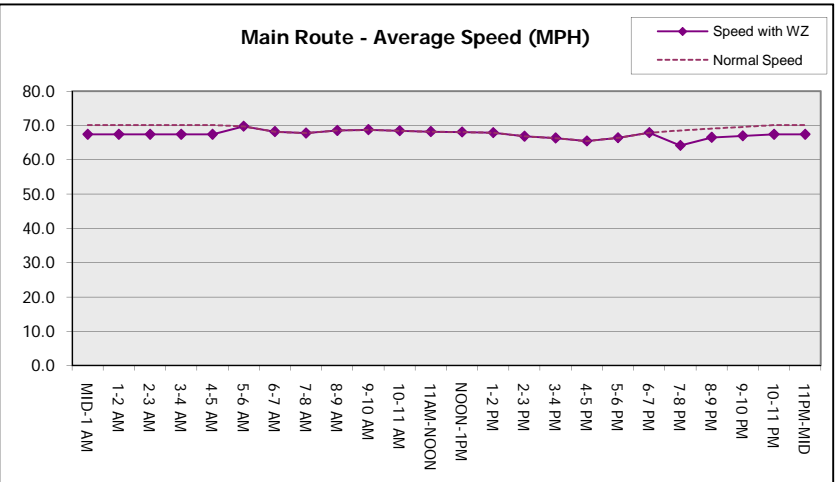
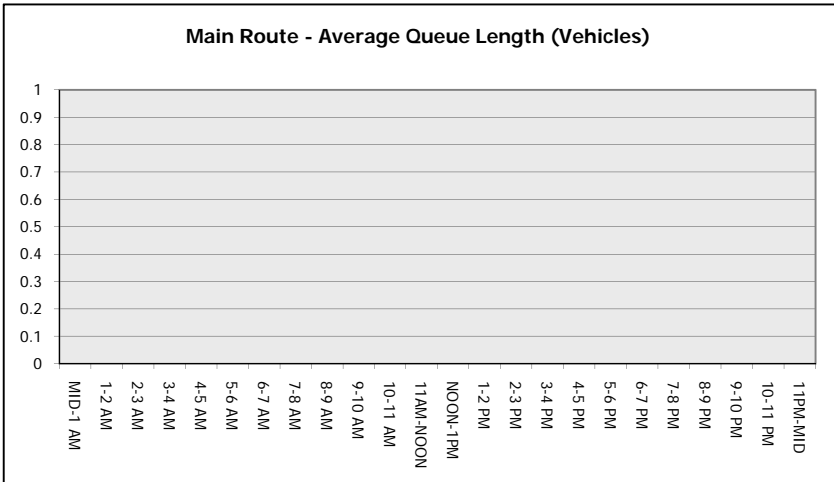
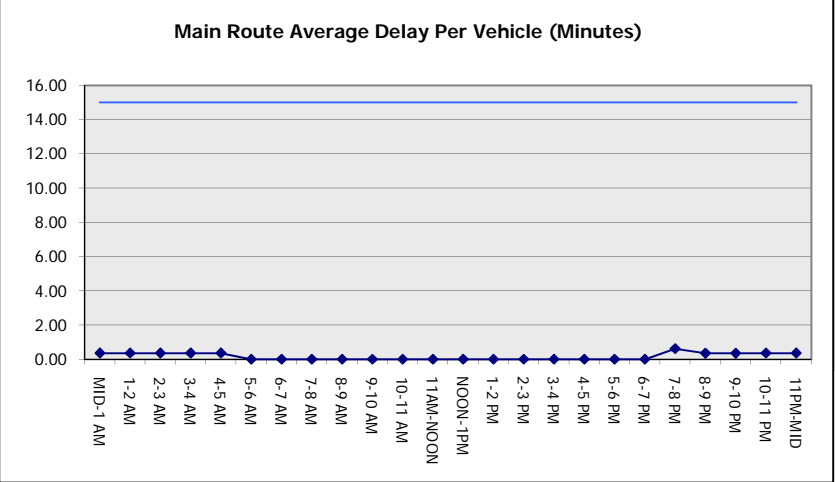
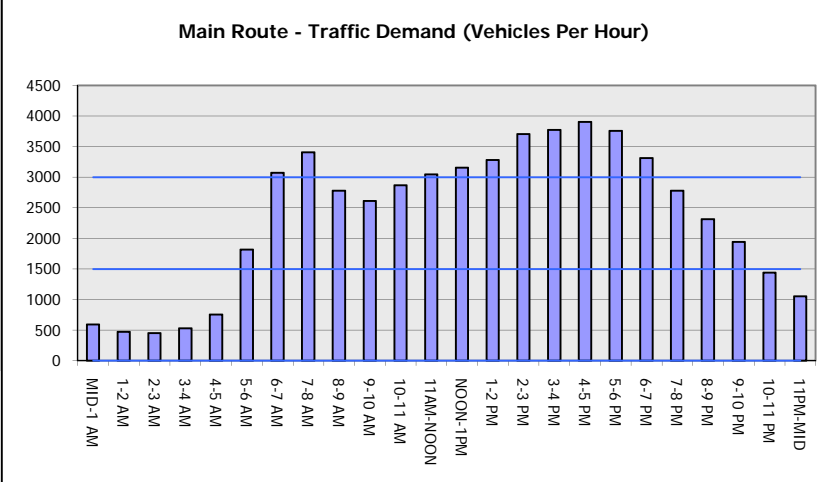
*Delays Exceeding User-Specified Maximum

IH 94: STH 100/RYAN RD TO STH 20 (MILWAUKEE AND RACINE COUNTIES)
NIGHTTIME CLOSURE
NO DIVERSION ROUTE (MAX QUEUE METHOD)

OCTOBER
 Analyzed for 2009
 Construction Season

GRAPHICAL REPRESENTATION OF TRAFFIC MODEL INPUT AND OUTPUT

FRIDAY WESTBOUND DIRECTION



IH 94: STH 100/RYAN RD TO STH 20 (MILWAUKEE AND RACINE COUNTIES) NIGHTTIME CLOSURE NO DIVERSION ROUTE (MAX QUEUE METHOD)	OCTOBER
	Analyzed for 2009 Construction Season

SUMMARY OF TRAFFIC MODEL OUTPUT

FRIDAY EASTBOUND DIRECTION

TIME OF DAY	FLOWS AND CAPACITY IN VEH/HR							AVERAGE SPEEDS IN MPH		
	MAIN ROUTE		SITE CAPA CITY	FLOW		AV.DEL PER VEH (MINS)	AVERAGE QUEUE (VEH)	MAIN ROUTE		SITE
	DEMAND FLOW	PCT HEAVY		MAIN ROUTE	'DIVER TED'			WITHOUT WORK ZONE	WITH WORK ZONE	
MID-1 AM	608	0.0	3000	608	0	0.36	0	70.2	67.4	49.7
1-2 AM	468	0.0	3000	468	0	0.36	0	70.2	67.4	49.7
2-3 AM	428	0.0	3000	428	0	0.36	0	70.2	67.4	49.7
3-4 AM	459	0.0	3000	459	0	0.36	0	70.2	67.4	49.7
4-5 AM	725	0.0	3000	725	0	0.36	0	70.2	67.4	49.7
5-6 AM	1226	0.0	OFF	1226	0	0.00	0	70.2	70.2	70.2
6-7 AM	2075	0.0	OFF	2075	0	0.00	0	69.4	69.4	69.4
7-8 AM	2737	0.0	OFF	2737	0	0.00	0	68.6	68.6	68.6
8-9 AM	2542	0.0	OFF	2542	0	0.00	0	68.9	68.9	68.9
9-10 AM	2570	0.0	OFF	2570	0	0.00	0	68.9	68.9	68.9
10-11 AM	2743	0.0	OFF	2743	0	0.00	0	68.6	68.6	68.6
11AM-NOON	2798	0.0	OFF	2798	0	0.00	0	68.6	68.6	68.6
NOON-1PM	3046	0.0	OFF	3046	0	0.00	0	68.2	68.2	68.2
1-2 PM	3194	0.0	OFF	3194	0	0.00	0	68.1	68.1	68.1
2-3 PM	3398	0.0	OFF	3398	0	0.00	0	67.8	67.8	67.8
3-4 PM	3726	0.0	OFF	3726	0	0.00	0	66.7	66.7	66.7
4-5 PM	4042	0.0	OFF	4042	0	0.00	0	64.5	64.5	64.5
5-6 PM	4072	0.0	OFF	4072	0	0.00	0	64.3	64.3	64.3
6-7 PM	3022	0.0	OFF	3022	0	0.00	0	68.3	68.3	68.3
7-8 PM	2158	0.0	3000	2158	0	0.35	0	69.4	66.8	49.7
8-9 PM	1631	0.0	3000	1631	0	0.36	0	70.0	67.3	49.7
9-10 PM	1546	0.0	3000	1546	0	0.36	0	70.1	67.4	49.7
10-11 PM	1297	0.0	3000	1297	0	0.36	0	70.2	67.4	49.7
11PM-MID	1017	0.0	3000	1017	0	0.36	0	70.2	67.4	49.7

"OFF" INDICATES NO ROAD WORK (ALL LANES OPEN TO TRAFFIC)

----- SITE BREAKDOWN DELAYS -----	
BREAKDOWN DURATION (MINS)	0
RANGE OF QUEUE DELAY - MIN	0.0
(VEH-H) MAX	0.0
AV BREAKDOWNS PER DAY	0.00
AV QUEUE DELAY/DAY (VEH-H)	0.0
AV TOTAL DELAY/DAY (VEH-H)	0.0

----- SITE ACCIDENT DELAYS -----	
BREAKDOWN DURATION (MINS)	0
RANGE OF QUEUE DELAY - MIN	0
(VEH-H) MAX	0
AV BREAKDOWNS PER DAY	0
AV QUEUE DELAY/DAY (VEH-H)	0
AV TOTAL DELAY/DAY (VEH-H)	0

AVERAGE ACCIDENT NUMBERS (PIA/DAY)	
MAIN ROUTE WITHOUT WORKS	0.0853
MAIN ROUTE WITH WORKS	0.0846
'DIVERSION'	0.0000

PIA: Personal Injury Accidents

ECONOMIC IMPACT ON ROAD USERS	
ROAD USER COSTS PER DAY	\$755
CONGESTED HOURS PER DAY*	0

*Delays Exceeding User-Specified Maximum

IH 94: STH 100/RYAN RD TO STH 20 (MILWAUKEE AND RACINE COUNTIES)
NIGHTTIME CLOSURE
NO DIVERSION ROUTE (MAX QUEUE METHOD)

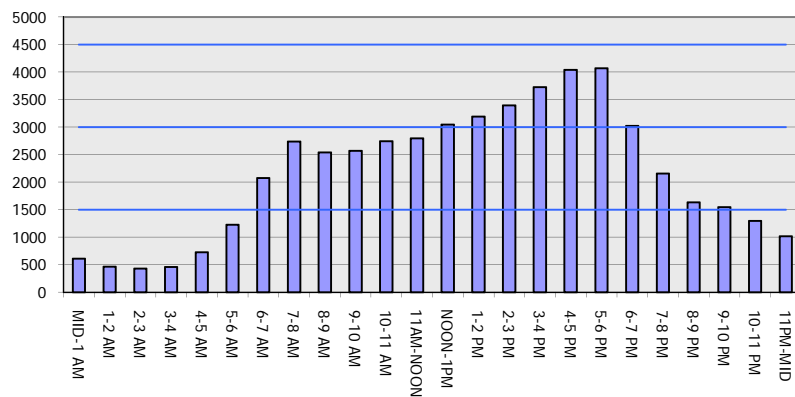
OCTOBER

Analyzed for 2009
 Construction Season

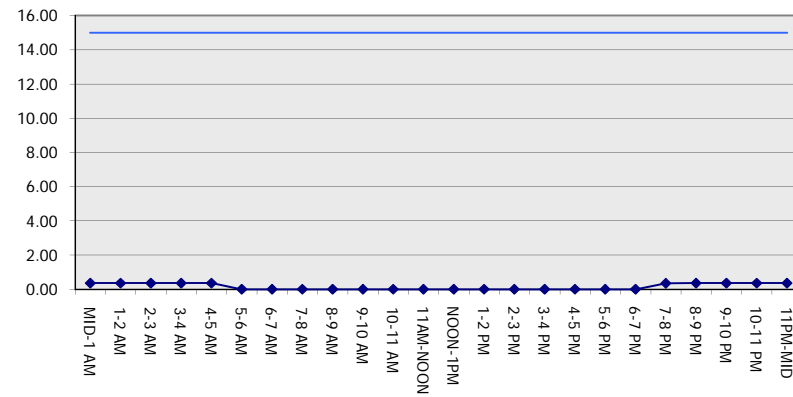
GRAPHICAL REPRESENTATION OF TRAFFIC MODEL INPUT AND OUTPUT

FRIDAY EASTBOUND DIRECTION

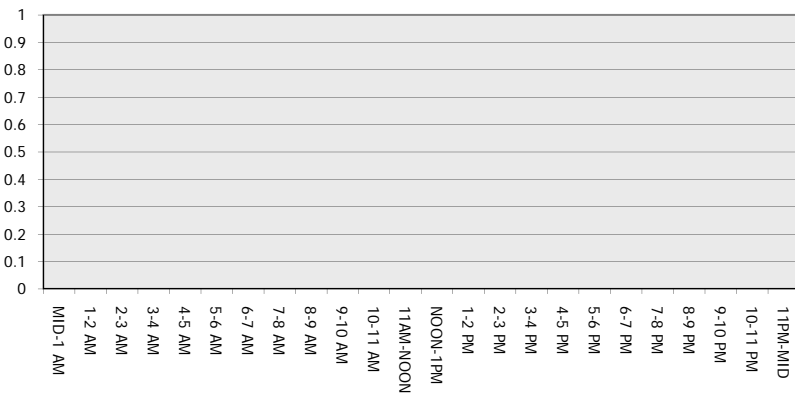
Main Route - Traffic Demand (Vehicles Per Hour)



Main Route Average Delay Per Vehicle (Minutes)



Main Route - Average Queue Length (Vehicles)



Main Route - Average Speed (MPH)

