

IH 43: STH 57/167 TO STH 100 (MILWAUKEE AND OZAUKEE COUNTIES) NIGHTTIME CLOSURE NO DIVERSION ROUTE (MAX QUEUE METHOD)	OCTOBER
	Analyzed for 2009 Construction Season

SUMMARY OF TRAFFIC MODEL OUTPUT

SUNDAY SOUTHBOUND DIRECTION

TIME OF DAY	FLOWS AND CAPACITY IN VEH/HR						AVERAGE SPEEDS IN MPH			
	MAIN ROUTE		SITE CAPA CITY	FLOW		AV.DEL PER VEH (MINS)	AVERAGE QUEUE (VEH)	MAIN ROUTE		SITE
	DEMAND FLOW	PCT HEAVY		MAIN ROUTE	'DIVER TED'			WITHOUT WORK ZONE	WITH WORK ZONE	
MID-1 AM	421	0.0	1500	421	0	0.46	0	65.6	56.4	43.8
1-2 AM	212	0.0	1500	212	0	0.44	0	66.0	57.0	44.6
2-3 AM	124	0.0	1500	124	0	0.43	0	66.1	57.3	45.0
3-4 AM	103	0.0	1500	103	0	0.43	0	66.2	57.4	45.1
4-5 AM	116	0.0	1500	116	0	0.43	0	66.2	57.3	45.0
5-6 AM	205	0.0	1500	205	0	0.44	0	66.0	57.1	44.6
6-7 AM	377	0.0	1500	377	0	0.46	0	65.7	56.5	44.0
7-8 AM	706	0.0	1500	706	0	0.49	0	65.1	55.5	42.7
8-9 AM	985	0.0	1499	985	0	0.52	0	64.5	54.7	41.7
9-10 AM	1547	0.0	OFF	1547	0	0.00	0	63.5	63.5	63.5
10-11 AM	1956	0.0	OFF	1956	0	0.00	0	62.7	62.7	62.7
11AM-NOON	2276	0.0	OFF	2276	0	0.00	0	62.2	62.2	62.2
NOON-1PM	2521	0.0	OFF	2521	0	0.00	0	60.7	60.7	60.7
1-2 PM	2507	0.0	OFF	2507	0	0.00	0	60.8	60.8	60.8
2-3 PM	2495	0.0	OFF	2495	0	0.00	0	60.9	60.9	60.9
3-4 PM	2697	0.0	OFF	2697	0	0.00	0	58.9	58.9	58.9
4-5 PM	2776	0.0	OFF	2776	0	0.00	0	58.1	58.1	58.1
5-6 PM	2819	0.0	OFF	2819	0	0.00	0	57.6	57.6	57.6
6-7 PM	2701	0.0	OFF	2701	0	0.00	0	58.8	58.8	58.8
7-8 PM	1891	0.0	1499	1891	0	9.04	243	62.8	15.6	30.8
8-9 PM	1152	0.0	1499	1152	0	8.81	247	64.2	16.0	33.8
9-10 PM	921	0.0	1500	921	0	0.57	1	64.6	54.0	41.9
10-11 PM	541	0.0	1500	541	0	0.47	0	65.4	56.0	43.3
11PM-MID	408	0.0	1500	408	0	0.46	0	65.6	56.4	43.8

"OFF" INDICATES NO ROAD WORK (ALL LANES OPEN TO TRAFFIC)

----- SITE BREAKDOWN DELAYS -----	
BREAKDOWN DURATION (MINS)	0
RANGE OF QUEUE DELAY - MIN (VEH-H) MAX	0.0
AV BREAKDOWNS PER DAY	0.00
AV QUEUE DELAY/DAY (VEH-H)	0.0
AV TOTAL DELAY/DAY (VEH-H)	0.0

----- SITE ACCIDENT DELAYS -----	
BREAKDOWN DURATION (MINS)	0
RANGE OF QUEUE DELAY - MIN (VEH-H) MAX	0
AV BREAKDOWNS PER DAY	0
AV QUEUE DELAY/DAY (VEH-H)	0
AV TOTAL DELAY/DAY (VEH-H)	0

AVERAGE ACCIDENT NUMBERS (PIA/DAY)	
MAIN ROUTE WITHOUT WORKS	0.0160
MAIN ROUTE WITH WORKS	0.0155
'DIVERSION'	0.0000
<small>PIA: Personal Injury Accidents</small>	
IMPACTS ON ROAD USERS	
ROAD USER COSTS PER DAY	\$8,384
CONGESTED HOURS PER DAY*	0

*Delays Exceeding User-Specified Maximum

IH 43: STH 57/167 TO STH 100 (MILWAUKEE AND OZAUKEE COUNTIES)
NIGHTTIME CLOSURE
NO DIVERSION ROUTE (MAX QUEUE METHOD)

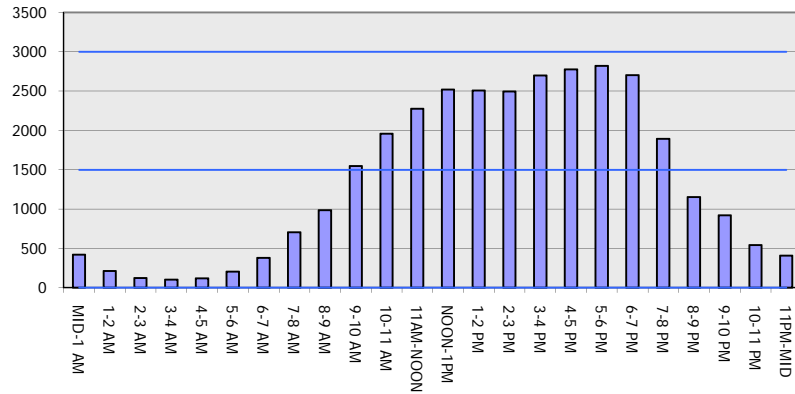
OCTOBER

Analyzed for 2009
 Construction Season

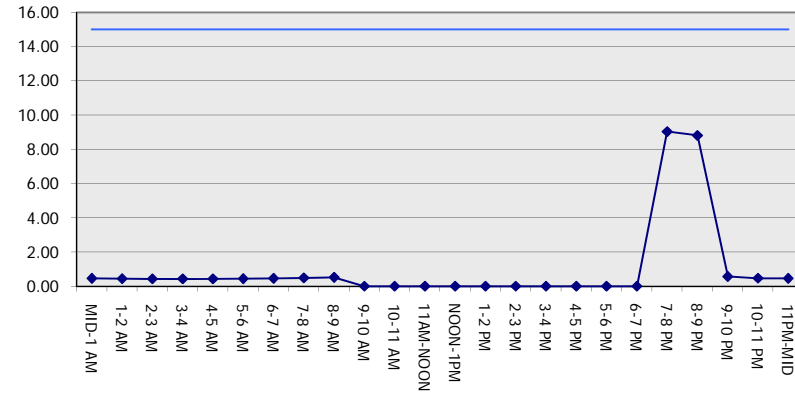
GRAPHICAL REPRESENTATION OF TRAFFIC MODEL INPUT AND OUTPUT

SUNDAY SOUTHBOUND DIRECTION

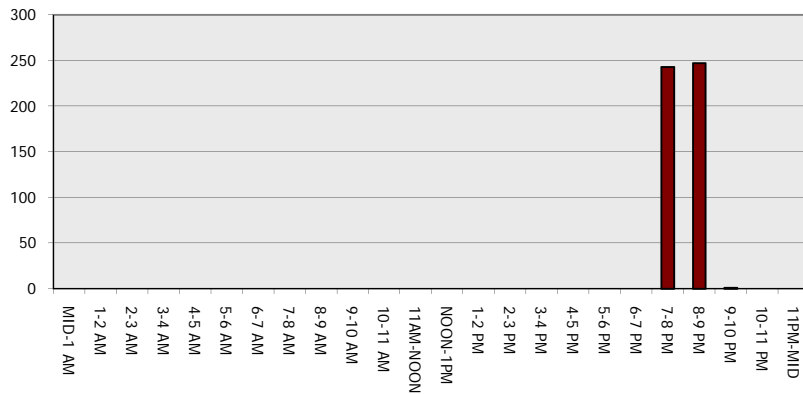
Main Route - Traffic Demand (Vehicles Per Hour)



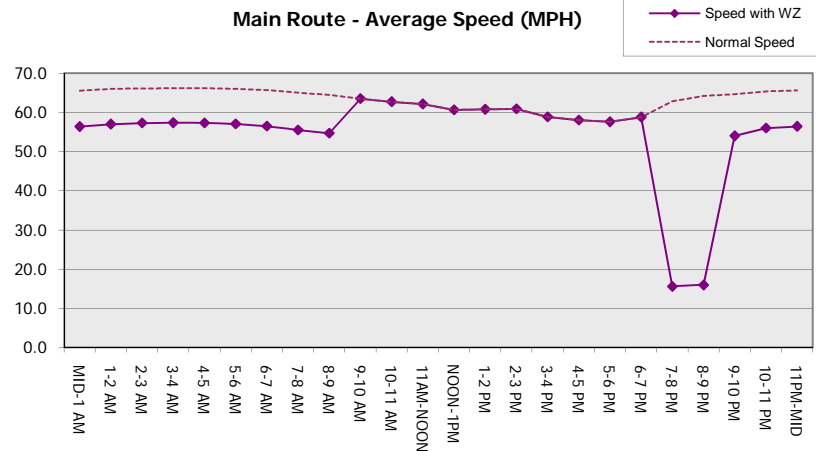
Main Route Average Delay Per Vehicle (Minutes)



Main Route - Average Queue Length (Vehicles)



Main Route - Average Speed (MPH)



IH 43: STH 57/167 TO STH 100 (MILWAUKEE AND OZAUKEE COUNTIES) NIGHTTIME CLOSURE NO DIVERSION ROUTE (MAX QUEUE METHOD)	OCTOBER
	Analyzed for 2009 Construction Season

SUMMARY OF TRAFFIC MODEL OUTPUT

SUNDAY NORTHBOUND DIRECTION

TIME OF DAY	FLOWS AND CAPACITY IN VEH/HR						AVERAGE SPEEDS IN MPH			
	MAIN ROUTE		SITE CAPA CITY	FLOW		AV.DEL PER VEH (MINS)	AVERAGE QUEUE (VEH)	MAIN ROUTE		SITE
	DEMAND FLOW	PCT HEAVY		MAIN ROUTE	'DIVER TED'			WITHOUT WORK ZONE	WITH WORK ZONE	
MID-1 AM	526	0.0	1500	526	0	0.47	0	65.4	56.1	43.4
1-2 AM	316	0.0	1500	316	0	0.45	0	65.8	56.7	44.2
2-3 AM	286	0.0	1500	286	0	0.45	0	65.8	56.8	44.3
3-4 AM	209	0.0	1500	209	0	0.44	0	66.0	57.0	44.6
4-5 AM	150	0.0	1500	150	0	0.44	0	66.1	57.2	44.9
5-6 AM	254	0.0	1500	254	0	0.45	0	65.9	56.9	44.5
6-7 AM	610	0.0	1500	610	0	0.48	0	65.3	55.8	43.1
7-8 AM	1044	0.0	1500	1044	0	0.52	0	64.5	54.5	41.5
8-9 AM	1394	0.0	1499	1394	0	0.88	0	63.8	48.9	33.2
9-10 AM	1616	0.0	OFF	1616	0	0.00	0	63.4	63.4	63.4
10-11 AM	1772	0.0	OFF	1772	0	0.00	0	63.1	63.1	63.1
11AM-NOON	2175	0.0	OFF	2175	0	0.00	0	62.3	62.3	62.3
NOON-1PM	2309	0.0	OFF	2309	0	0.00	0	62.1	62.1	62.1
1-2 PM	2272	0.0	OFF	2272	0	0.00	0	62.2	62.2	62.2
2-3 PM	2276	0.0	OFF	2276	0	0.00	0	62.2	62.2	62.2
3-4 PM	2376	0.0	OFF	2376	0	0.00	0	62.0	62.0	62.0
4-5 PM	2195	0.0	OFF	2195	0	0.00	0	62.3	62.3	62.3
5-6 PM	1886	0.0	OFF	1886	0	0.00	0	62.8	62.8	62.8
6-7 PM	1632	0.0	OFF	1632	0	0.00	0	63.3	63.3	63.3
7-8 PM	1287	0.0	1500	1287	0	0.75	0	64.0	50.9	35.9
8-9 PM	921	0.0	1500	921	0	0.51	0	64.6	54.9	42.0
9-10 PM	770	0.0	1500	770	0	0.50	0	65.0	55.3	42.5
10-11 PM	628	0.0	1500	628	0	0.48	0	65.2	55.8	43.0
11PM-MID	435	0.0	1500	435	0	0.46	0	65.6	56.3	43.8

"OFF" INDICATES NO ROAD WORK (ALL LANES OPEN TO TRAFFIC)

----- SITE BREAKDOWN DELAYS -----	
BREAKDOWN DURATION (MINS)	0
RANGE OF QUEUE DELAY - MIN (VEH-H) MAX	0.0
AV BREAKDOWNS PER DAY	0.00
AV QUEUE DELAY/DAY (VEH-H)	0.0
AV TOTAL DELAY/DAY (VEH-H)	0.0

----- SITE ACCIDENT DELAYS -----	
BREAKDOWN DURATION (MINS)	0
RANGE OF QUEUE DELAY - MIN (VEH-H) MAX	0
AV BREAKDOWNS PER DAY	0
AV QUEUE DELAY/DAY (VEH-H)	0
AV TOTAL DELAY/DAY (VEH-H)	0

AVERAGE ACCIDENT NUMBERS (PIA/DAY)	
MAIN ROUTE WITHOUT WORKS	0.0145
MAIN ROUTE WITH WORKS	0.0139
'DIVERSION'	0.0000

PIA: Personal Injury Accidents

ECONOMIC IMPACT ON ROAD USERS	
ROAD USER COSTS PER DAY	\$1,457
CONGESTED HOURS PER DAY*	0

*Delays Exceeding User-Specified Maximum

IH 43: STH 57/167 TO STH 100 (MILWAUKEE AND OZAUKEE COUNTIES)
NIGHTTIME CLOSURE
NO DIVERSION ROUTE (MAX QUEUE METHOD)

OCTOBER

Analyzed for 2009
 Construction Season

GRAPHICAL REPRESENTATION OF TRAFFIC MODEL INPUT AND OUTPUT
SUNDAY NORTHBOUND DIRECTION

