

IH 43: STH 57/167 TO STH 100 (MILWAUKEE AND OZAUKEE COUNTIES) NIGHTTIME CLOSURE NO DIVERSION ROUTE (MAX QUEUE METHOD)	OCTOBER
	Analyzed for 2009 Construction Season

SUMMARY OF TRAFFIC MODEL OUTPUT

SATURDAY SOUTHBOUND DIRECTION

TIME OF DAY	FLOWS AND CAPACITY IN VEH/HR							AVERAGE SPEEDS IN MPH			
	MAIN ROUTE		SITE CAPA CITY	FLOW		AV.DEL PER VEH (MINS)	AVERAGE QUEUE (VEH)	MAIN ROUTE		SITE	
	DEMAND FLOW	PCT HEAVY		MAIN ROUTE	'DIVER TED'			WITHOUT WORK ZONE	WITH WORK ZONE		
MID-1 AM	353	0.0	1500	353	0	0.46	0	65.7	56.6	44.1	
1-2 AM	155	0.0	1500	155	0	0.44	0	66.1	57.2	44.8	
2-3 AM	114	0.0	1500	114	0	0.43	0	66.2	57.3	45.0	
3-4 AM	111	0.0	1500	111	0	0.43	0	66.2	57.3	45.0	
4-5 AM	201	0.0	1500	201	0	0.44	0	66.0	57.1	44.6	
5-6 AM	385	0.0	1500	385	0	0.46	0	65.6	56.5	44.0	
6-7 AM	628	0.0	1500	628	0	0.48	0	65.2	55.8	43.0	
7-8 AM	1152	0.0	1499	1152	0	0.63	0	64.2	52.8	38.8	
8-9 AM	1644	0.0	OFF	1644	0	0.00	0	63.3	63.3	63.3	
9-10 AM	1907	0.0	OFF	1907	0	0.00	0	62.8	62.8	62.8	
10-11 AM	2042	0.0	OFF	2042	0	0.00	0	62.6	62.6	62.6	
11AM-NOON	2222	0.0	OFF	2222	0	0.00	0	62.2	62.2	62.2	
NOON-1PM	2403	0.0	OFF	2403	0	0.00	0	61.9	61.9	61.9	
1-2 PM	2311	0.0	OFF	2311	0	0.00	0	62.1	62.1	62.1	
2-3 PM	2179	0.0	OFF	2179	0	0.00	0	62.3	62.3	62.3	
3-4 PM	2321	0.0	OFF	2321	0	0.00	0	62.0	62.0	62.0	
4-5 PM	2280	0.0	OFF	2280	0	0.00	0	62.2	62.2	62.2	
5-6 PM	2293	0.0	OFF	2293	0	0.00	0	62.1	62.1	62.1	
6-7 PM	2070	0.0	1499	1881	190	10.17+	280	62.5	14.5	30.8	
7-8 PM	1586	0.0	1500	1495	92	15.60+	393	63.4	10.5	30.8	
8-9 PM	1216	0.0	1499	1216	0	9.45	248	64.1	15.1	32.1	
9-10 PM	1093	0.0	1500	1093	0	0.84	11	64.3	49.9	40.6	
10-11 PM	916	0.0	1500	916	0	0.51	0	64.7	54.9	42.0	
11PM-MID	681	0.0	1500	681	0	0.49	0	65.1	55.6	42.8	

"OFF" INDICATES NO ROAD WORK (ALL LANES OPEN TO TRAFFIC)

+ INDICATES QUEUEING EXCEEDS USER-SPECIFIED MAXIMUM LIMIT

----- SITE BREAKDOWN DELAYS -----	
BREAKDOWN DURATION (MINS)	0
RANGE OF QUEUE DELAY - MIN (VEH-H) MAX	0.0
AV BREAKDOWNS PER DAY	0.00
AV QUEUE DELAY/DAY (VEH-H)	0.0
AV TOTAL DELAY/DAY (VEH-H)	0.0

----- SITE ACCIDENT DELAYS -----	
BREAKDOWN DURATION (MINS)	0
RANGE OF QUEUE DELAY - MIN (VEH-H) MAX	0
AV BREAKDOWNS PER DAY	0
AV QUEUE DELAY/DAY (VEH-H)	0
AV TOTAL DELAY/DAY (VEH-H)	0

AVERAGE ACCIDENT NUMBERS (PIA/DAY)	
MAIN ROUTE WITHOUT WORKS	0.0159
MAIN ROUTE WITH WORKS	0.0151
'DIVERSION'	0.0003
<small>PIA: Personal Injury Accidents</small>	
IMPACTS ON ROAD USERS	
ROAD USER COSTS PER DAY	\$16,867
CONGESTED HOURS PER DAY*	2

*Delays Exceeding User-Specified Maximum

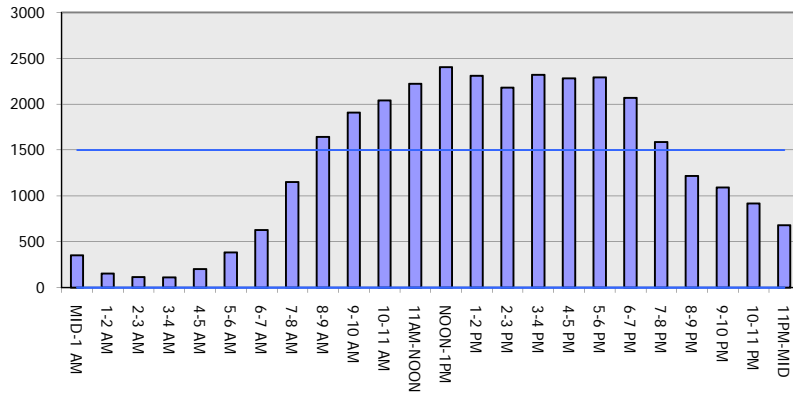
IH 43: STH 57/167 TO STH 100 (MILWAUKEE AND OZAUKEE COUNTIES)
NIGHTTIME CLOSURE
NO DIVERSION ROUTE (MAX QUEUE METHOD)

OCTOBER

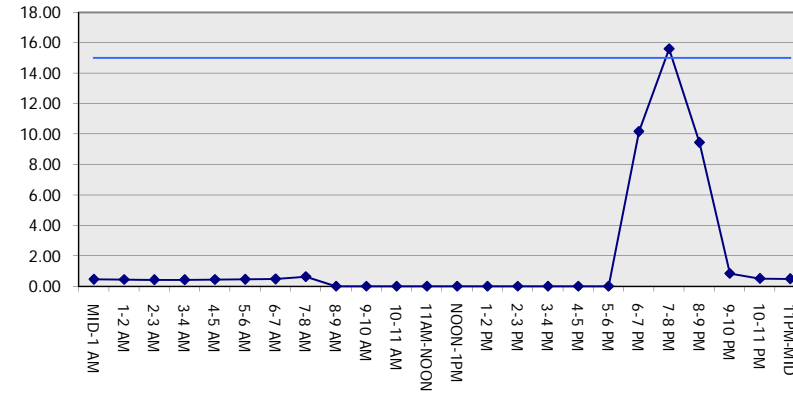
Analyzed for 2009
 Construction Season

GRAPHICAL REPRESENTATION OF TRAFFIC MODEL INPUT AND OUTPUT
SATURDAY SOUTHBOUND DIRECTION

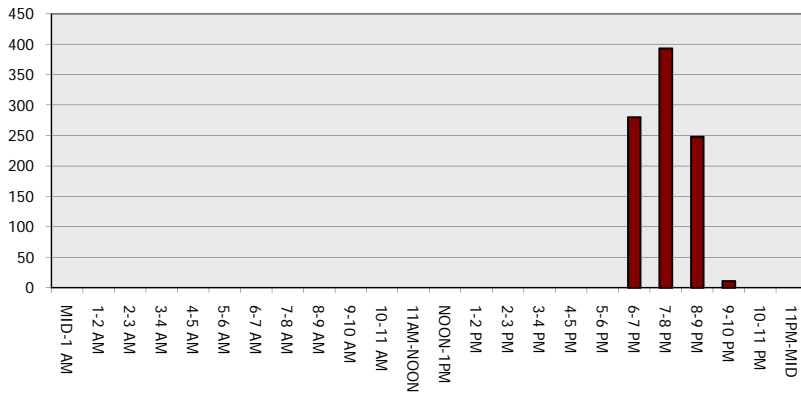
Main Route - Traffic Demand (Vehicles Per Hour)



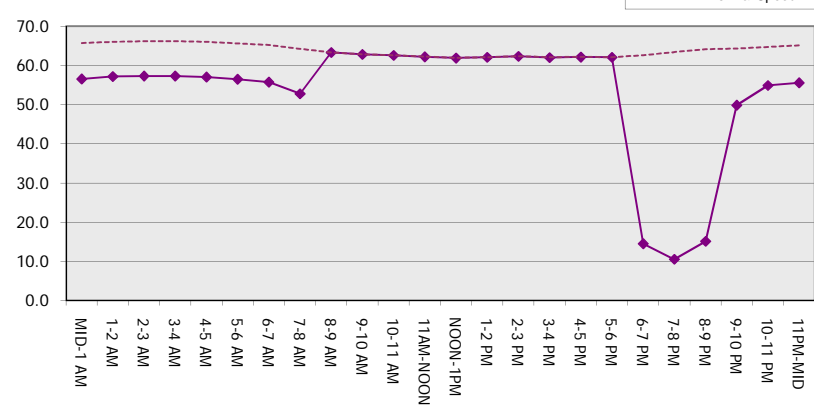
Main Route Average Delay Per Vehicle (Minutes)



Main Route - Average Queue Length (Vehicles)



Main Route - Average Speed (MPH)



IH 43: STH 57/167 TO STH 100 (MILWAUKEE AND OZAUKEE COUNTIES) NIGHTTIME CLOSURE NO DIVERSION ROUTE (MAX QUEUE METHOD)	OCTOBER
	Analyzed for 2009 Construction Season

SUMMARY OF TRAFFIC MODEL OUTPUT

SATURDAY NORTHBOUND DIRECTION

TIME OF DAY	FLOWS AND CAPACITY IN VEH/HR						AVERAGE SPEEDS IN MPH			
	MAIN ROUTE		SITE CAPA CITY	FLOW		AV.DEL PER VEH (MINS)	AVERAGE QUEUE (VEH)	MAIN ROUTE		SITE
	DEMAND FLOW	PCT HEAVY		MAIN ROUTE	'DIVER TED'			WITHOUT WORK ZONE	WITH WORK ZONE	
MID-1 AM	504	0.0	1500	504	0	0.47	0	65.5	56.1	43.5
1-2 AM	301	0.0	1500	301	0	0.45	0	65.8	56.8	44.3
2-3 AM	258	0.0	1500	258	0	0.45	0	65.9	56.9	44.5
3-4 AM	194	0.0	1500	194	0	0.44	0	66.0	57.1	44.7
4-5 AM	245	0.0	1500	245	0	0.45	0	66.0	56.9	44.5
5-6 AM	371	0.0	1500	371	0	0.46	0	65.7	56.5	44.0
6-7 AM	646	0.0	1500	646	0	0.49	0	65.2	55.7	43.0
7-8 AM	1210	0.0	1499	1210	0	0.67	0	64.1	52.2	37.9
8-9 AM	1699	0.0	OFF	1699	0	0.00	0	63.2	63.2	63.2
9-10 AM	2058	0.0	OFF	2058	0	0.00	0	62.5	62.5	62.5
10-11 AM	2478	0.0	OFF	2478	0	0.00	0	61.1	61.1	61.1
11AM-NOON	2588	0.0	OFF	2588	0	0.00	0	60.0	60.0	60.0
NOON-1PM	2703	0.0	OFF	2703	0	0.00	0	58.8	58.8	58.8
1-2 PM	2626	0.0	OFF	2626	0	0.00	0	59.6	59.6	59.6
2-3 PM	2551	0.0	OFF	2551	0	0.00	0	60.4	60.4	60.4
3-4 PM	2554	0.0	OFF	2554	0	0.00	0	60.4	60.4	60.4
4-5 PM	2352	0.0	OFF	2352	0	0.00	0	62.0	62.0	62.0
5-6 PM	2181	0.0	OFF	2181	0	0.00	0	62.3	62.3	62.3
6-7 PM	1875	0.0	1499	1875	0	7.78	211	62.9	17.3	30.8
7-8 PM	1422	0.0	1499	1422	0	14.10+	353	63.7	11.1	30.8
8-9 PM	1301	0.0	1499	1301	0	8.19	203	64.0	16.8	31.2
9-10 PM	1197	0.0	1500	1197	0	1.09	16	64.1	46.6	37.8
10-11 PM	1208	0.0	1500	1208	0	0.65	0	64.1	52.4	38.2
11PM-MID	852	0.0	1500	852	0	0.50	0	64.8	55.1	42.2

"OFF" INDICATES NO ROAD WORK (ALL LANES OPEN TO TRAFFIC)

+ INDICATES QUEUEING EXCEEDS USER-SPECIFIED MAXIMUM LIMIT

BREAKDOWN DURATION (MINS)	0
RANGE OF QUEUE DELAY - MIN (VEH-H) MAX	0.0
AV BREAKDOWNS PER DAY	0.00
AV QUEUE DELAY/DAY (VEH-H)	0.0
AV TOTAL DELAY/DAY (VEH-H)	0.0

BREAKDOWN DURATION (MINS)	0
RANGE OF QUEUE DELAY - MIN (VEH-H) MAX	0
AV BREAKDOWNS PER DAY	0
AV QUEUE DELAY/DAY (VEH-H)	0
AV TOTAL DELAY/DAY (VEH-H)	0

MAIN ROUTE WITHOUT WORKS	0.0175
MAIN ROUTE WITH WORKS	0.0167
'DIVERSION'	0.0000

PIA: Personal Injury Accidents

ROAD USER COSTS PER DAY	\$13,853
CONGESTED HOURS PER DAY*	1

*Delays Exceeding User-Specified Maximum

IH 43: STH 57/167 TO STH 100 (MILWAUKEE AND OZAUKEE COUNTIES)
NIGHTTIME CLOSURE
NO DIVERSION ROUTE (MAX QUEUE METHOD)

OCTOBER

Analyzed for 2009
 Construction Season

GRAPHICAL REPRESENTATION OF TRAFFIC MODEL INPUT AND OUTPUT
SATURDAY NORTHBOUND DIRECTION

