

IH 43: STH 57/167 TO STH 100 (MILWAUKEE AND OZAUKEE COUNTIES) NIGHTTIME CLOSURE NO DIVERSION ROUTE (MAX QUEUE METHOD)	OCTOBER
	Analyzed for 2009 Construction Season

SUMMARY OF TRAFFIC MODEL OUTPUT

FRIDAY SOUTHBOUND DIRECTION

TIME OF DAY	FLOWS AND CAPACITY IN VEH/HR						AVERAGE SPEEDS IN MPH			
	MAIN ROUTE		SITE CAPA CITY	FLOW		AV.DEL PER VEH (MINS)	AVERAGE QUEUE (VEH)	MAIN ROUTE		SITE
	DEMAND FLOW	PCT HEAVY		MAIN ROUTE	'DIVER TED'			WITHOUT WORK ZONE	WITH WORK ZONE	
MID-1 AM	223	0.0	1500	223	0	0.44	0	66.0	57.0	44.6
1-2 AM	137	0.0	1500	137	0	0.44	0	66.1	57.3	45.0
2-3 AM	121	0.0	1500	121	0	0.43	0	66.1	57.3	45.0
3-4 AM	145	0.0	1500	145	0	0.44	0	66.1	57.3	44.9
4-5 AM	312	0.0	1500	312	0	0.45	0	65.8	56.7	44.2
5-6 AM	1005	0.0	OFF	1005	0	0.00	0	64.5	64.5	64.5
6-7 AM	2539	0.0	OFF	2539	0	0.00	0	60.5	60.5	60.5
7-8 AM	3685	0.0	OFF	3685	0	0.00	0	48.7	48.7	48.7
8-9 AM	2842	0.0	OFF	2842	0	0.00	0	57.4	57.4	57.4
9-10 AM	2176	0.0	OFF	2176	0	0.00	0	62.3	62.3	62.3
10-11 AM	2060	0.0	OFF	2060	0	0.00	0	62.5	62.5	62.5
11AM-NOON	2178	0.0	OFF	2178	0	0.00	0	62.3	62.3	62.3
NOON-1PM	2274	0.0	OFF	2274	0	0.00	0	62.2	62.2	62.2
1-2 PM	2260	0.0	OFF	2260	0	0.00	0	62.2	62.2	62.2
2-3 PM	2447	0.0	OFF	2447	0	0.00	0	61.4	61.4	61.4
3-4 PM	2768	0.0	OFF	2768	0	0.00	0	58.1	58.1	58.1
4-5 PM	2799	0.0	OFF	2799	0	0.00	0	57.8	57.8	57.8
5-6 PM	2993	0.0	OFF	2993	0	0.00	0	55.8	55.8	55.8
6-7 PM	2460	0.0	OFF	2460	0	0.00	0	61.3	61.3	61.3
7-8 PM	1741	0.0	1499	1741	0	6.44	160	63.2	19.8	30.8
8-9 PM	1188	0.0	1499	1188	0	3.51	111	64.1	29.0	35.3
9-10 PM	1097	0.0	1500	1097	0	0.53	0	64.3	54.4	41.4
10-11 PM	920	0.0	1500	920	0	0.51	0	64.6	54.9	42.0
11PM-MID	661	0.0	1500	661	0	0.49	0	65.1	55.6	42.9

"OFF" INDICATES NO ROAD WORK (ALL LANES OPEN TO TRAFFIC)

----- SITE BREAKDOWN DELAYS -----	
BREAKDOWN DURATION (MINS)	0
RANGE OF QUEUE DELAY - MIN (VEH-H) MAX	0.0
AV BREAKDOWNS PER DAY	0.00
AV QUEUE DELAY/DAY (VEH-H)	0.0
AV TOTAL DELAY/DAY (VEH-H)	0.0

----- SITE ACCIDENT DELAYS -----	
BREAKDOWN DURATION (MINS)	0
RANGE OF QUEUE DELAY - MIN (VEH-H) MAX	0
AV BREAKDOWNS PER DAY	0
AV QUEUE DELAY/DAY (VEH-H)	0
AV TOTAL DELAY/DAY (VEH-H)	0

AVERAGE ACCIDENT NUMBERS (PIA/DAY)	
MAIN ROUTE WITHOUT WORKS	0.0202
MAIN ROUTE WITH WORKS	0.0198
'DIVERSION'	0.0000
<small>PIA: Personal Injury Accidents</small>	
IMPACTS ON ROAD USERS	
ROAD USER COSTS PER DAY	\$4,218
CONGESTED HOURS PER DAY*	0

*Delays Exceeding User-Specified Maximum

IH 43: STH 57/167 TO STH 100 (MILWAUKEE AND OZAUKEE COUNTIES)
NIGHTTIME CLOSURE
NO DIVERSION ROUTE (MAX QUEUE METHOD)

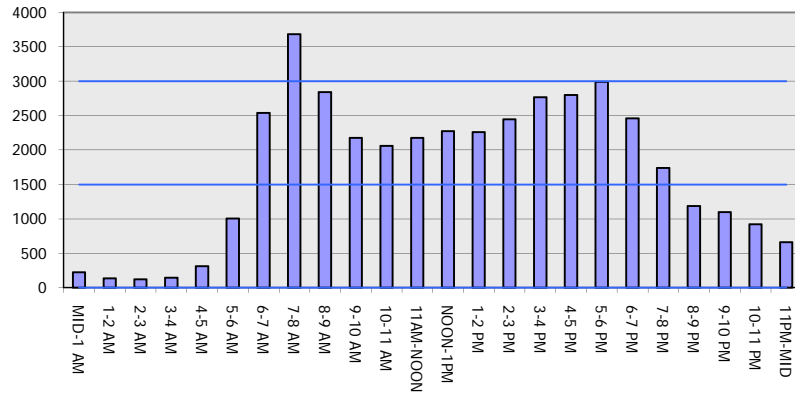
OCTOBER

Analyzed for 2009
 Construction Season

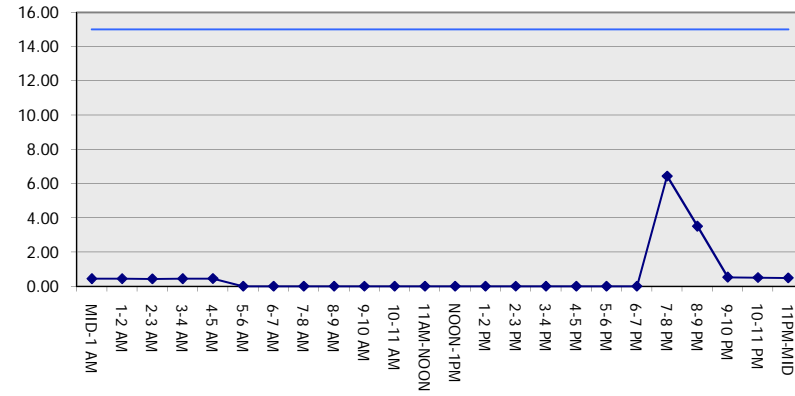
GRAPHICAL REPRESENTATION OF TRAFFIC MODEL INPUT AND OUTPUT

FRIDAY SOUTHBOUND DIRECTION

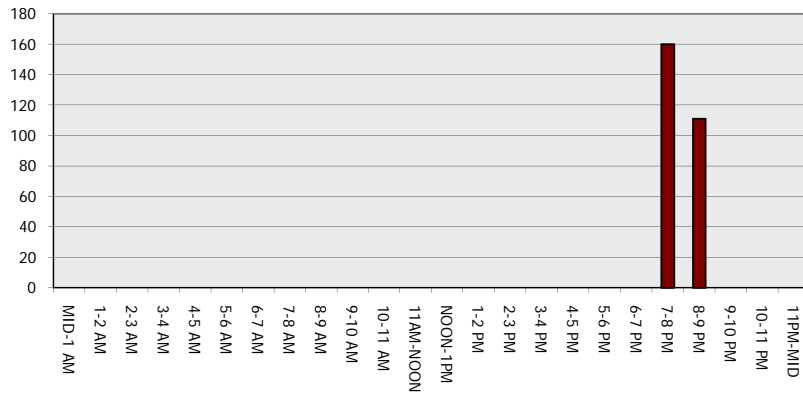
Main Route - Traffic Demand (Vehicles Per Hour)



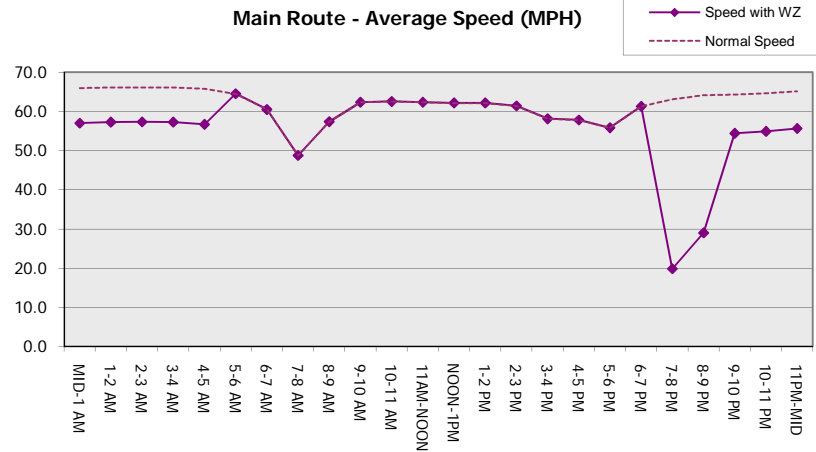
Main Route Average Delay Per Vehicle (Minutes)



Main Route - Average Queue Length (Vehicles)



Main Route - Average Speed (MPH)



IH 43: STH 57/167 TO STH 100 (MILWAUKEE AND OZAUKEE COUNTIES) NIGHTTIME CLOSURE NO DIVERSION ROUTE (MAX QUEUE METHOD)	OCTOBER
	Analyzed for 2009 Construction Season

SUMMARY OF TRAFFIC MODEL OUTPUT

FRIDAY NORTHBOUND DIRECTION

TIME OF DAY	FLOWS AND CAPACITY IN VEH/HR						AVERAGE SPEEDS IN MPH			
	MAIN ROUTE		SITE CAPA CITY	FLOW		AV.DEL PER VEH (MINS)	AVERAGE QUEUE (VEH)	MAIN ROUTE		SITE
	DEMAND FLOW	PCT HEAVY		MAIN ROUTE	'DIVER TED'			WITHOUT WORK ZONE	WITH WORK ZONE	
MID-1 AM	363	0.0	1500	363	0	0.46	0	65.7	56.6	44.0
1-2 AM	223	0.0	1500	223	0	0.44	0	66.0	57.0	44.6
2-3 AM	198	0.0	1500	198	0	0.44	0	66.0	57.1	44.7
3-4 AM	191	0.0	1500	191	0	0.44	0	66.0	57.1	44.7
4-5 AM	270	0.0	1500	270	0	0.45	0	65.9	56.8	44.4
5-6 AM	714	0.0	OFF	714	0	0.00	0	65.1	65.1	65.1
6-7 AM	1677	0.0	OFF	1677	0	0.00	0	63.3	63.3	63.3
7-8 AM	2578	0.0	OFF	2578	0	0.00	0	60.1	60.1	60.1
8-9 AM	2547	0.0	OFF	2547	0	0.00	0	60.4	60.4	60.4
9-10 AM	2137	0.0	OFF	2137	0	0.00	0	62.4	62.4	62.4
10-11 AM	2350	0.0	OFF	2350	0	0.00	0	62.0	62.0	62.0
11AM-NOON	2632	0.0	OFF	2632	0	0.00	0	59.6	59.6	59.6
NOON-1PM	2779	0.0	OFF	2779	0	0.00	0	58.0	58.0	58.0
1-2 PM	2949	0.0	OFF	2949	0	0.00	0	56.3	56.3	56.3
2-3 PM	3341	0.0	OFF	3341	0	0.00	0	52.3	52.3	52.3
3-4 PM	3637	0.0	OFF	3637	0	0.00	0	49.2	49.2	49.2
4-5 PM	3763	0.0	OFF	3763	0	0.00	0	47.9	47.9	47.9
5-6 PM	3614	0.0	OFF	3614	0	0.00	0	49.5	49.5	49.5
6-7 PM	3202	0.0	OFF	3202	0	0.00	0	53.7	53.7	53.7
7-8 PM	2044	0.0	1499	1865	180	10.82+	294	62.6	13.8	30.8
8-9 PM	1737	0.0	1500	1522	214	16.01+	404	63.2	10.4	30.8
9-10 PM	1637	0.0	1500	1518	119	16.03+	405	63.3	10.4	30.8
10-11 PM	1321	0.0	1499	1321	0	13.52+	342	63.9	11.6	30.8
11PM-MID	784	0.0	1500	784	0	1.32	42	64.9	44.4	42.2

"OFF" INDICATES NO ROAD WORK (ALL LANES OPEN TO TRAFFIC)

+ INDICATES QUEUEING EXCEEDS USER-SPECIFIED MAXIMUM LIMIT

----- SITE BREAKDOWN DELAYS -----	
BREAKDOWN DURATION (MINS)	0
RANGE OF QUEUE DELAY - MIN (VEH-H) MAX	0.0
AV BREAKDOWNS PER DAY	0.00
AV QUEUE DELAY/DAY (VEH-H)	0.0
AV TOTAL DELAY/DAY (VEH-H)	0.0

----- SITE ACCIDENT DELAYS -----	
BREAKDOWN DURATION (MINS)	0
RANGE OF QUEUE DELAY - MIN (VEH-H) MAX	0
AV BREAKDOWNS PER DAY	0
AV QUEUE DELAY/DAY (VEH-H)	0
AV TOTAL DELAY/DAY (VEH-H)	0

AVERAGE ACCIDENT NUMBERS (PIA/DAY)	
MAIN ROUTE WITHOUT WORKS	0.0230
MAIN ROUTE WITH WORKS	0.0222
'DIVERSION'	0.0006

PIA: Personal Injury Accidents

ECONOMIC IMPACT ON ROAD USERS	
ROAD USER COSTS PER DAY	\$23,487
CONGESTED HOURS PER DAY*	4

*Delays Exceeding User-Specified Maximum

IH 43: STH 57/167 TO STH 100 (MILWAUKEE AND OZAUKEE COUNTIES)
NIGHTTIME CLOSURE
NO DIVERSION ROUTE (MAX QUEUE METHOD)

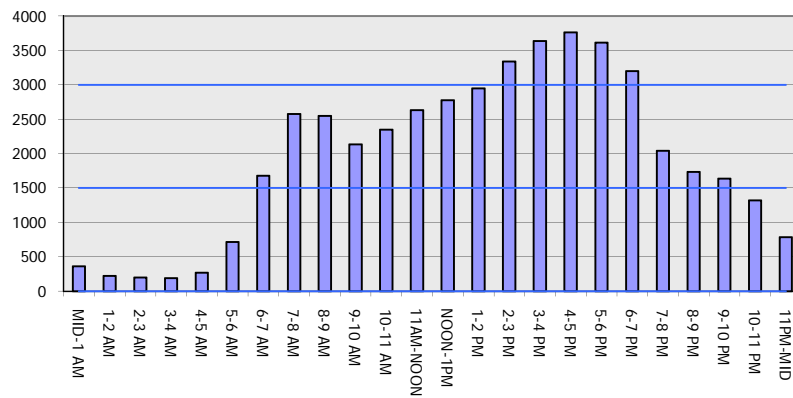
OCTOBER

Analyzed for 2009
 Construction Season

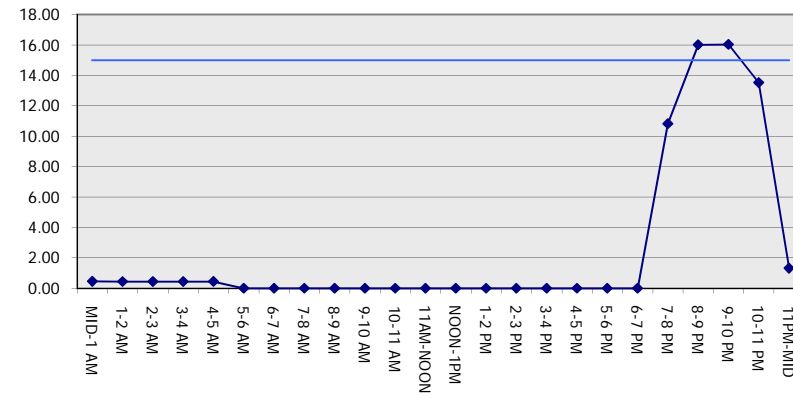
GRAPHICAL REPRESENTATION OF TRAFFIC MODEL INPUT AND OUTPUT

FRIDAY NORTHBOUND DIRECTION

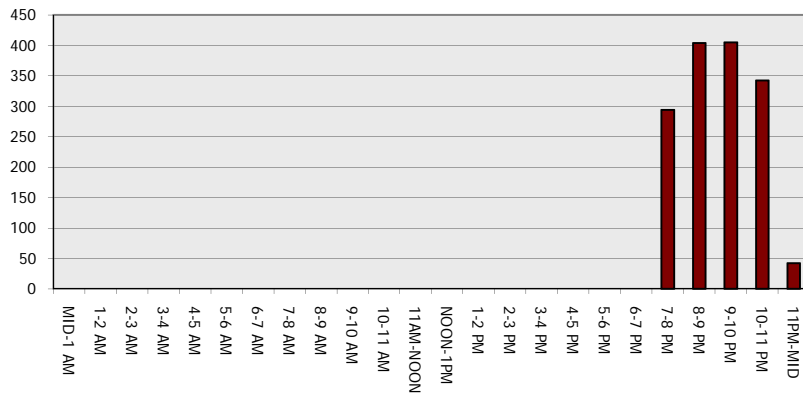
Main Route - Traffic Demand (Vehicles Per Hour)



Main Route Average Delay Per Vehicle (Minutes)



Main Route - Average Queue Length (Vehicles)



Main Route - Average Speed (MPH)

