

IH 43: STH 57/167 TO STH 100 (MILWAUKEE AND OZAUKEE COUNTIES) NIGHTTIME CLOSURE NO DIVERSION ROUTE (MAX QUEUE METHOD)	AUGUST
	Analyzed for 2009 Construction Season

SUMMARY OF TRAFFIC MODEL OUTPUT

MON-THUR SOUTHBOUND DIRECTION

TIME OF DAY	FLOWS AND CAPACITY IN VEH/HR						AVERAGE SPEEDS IN MPH			
	MAIN ROUTE		SITE CAPA CITY	FLOW		AV.DEL PER VEH (MINS)	AVERAGE QUEUE (VEH)	MAIN ROUTE		SITE
	DEMAND FLOW	PCT HEAVY		MAIN ROUTE	'DIVER TED'			WITHOUT WORK ZONE	WITH WORK ZONE	
MID-1 AM	251	0.0	1500	251	0	0.45	0	65.9	56.9	44.5
1-2 AM	151	0.0	1500	151	0	0.44	0	66.1	57.2	44.9
2-3 AM	119	0.0	1500	119	0	0.43	0	66.1	57.3	45.0
3-4 AM	156	0.0	1500	156	0	0.44	0	66.1	57.2	44.8
4-5 AM	366	0.0	1500	366	0	0.46	0	65.7	56.6	44.0
5-6 AM	1076	0.0	OFF	1076	0	0.00	0	64.4	64.4	64.4
6-7 AM	2605	0.0	OFF	2605	0	0.00	0	59.8	59.8	59.8
7-8 AM	3635	0.0	OFF	3635	0	0.00	0	49.2	49.2	49.2
8-9 AM	3087	0.0	OFF	3087	0	0.00	0	54.9	54.9	54.9
9-10 AM	2385	0.0	OFF	2385	0	0.00	0	61.9	61.9	61.9
10-11 AM	2227	0.0	OFF	2227	0	0.00	0	62.2	62.2	62.2
11AM-NOON	2336	0.0	OFF	2336	0	0.00	0	62.0	62.0	62.0
NOON-1PM	2323	0.0	OFF	2323	0	0.00	0	62.0	62.0	62.0
1-2 PM	2121	0.0	OFF	2121	0	0.00	0	62.4	62.4	62.4
2-3 PM	2500	0.0	OFF	2500	0	0.00	0	60.9	60.9	60.9
3-4 PM	2648	0.0	OFF	2648	0	0.00	0	59.4	59.4	59.4
4-5 PM	2723	0.0	OFF	2723	0	0.00	0	58.6	58.6	58.6
5-6 PM	2891	0.0	OFF	2891	0	0.00	0	56.9	56.9	56.9
6-7 PM	2135	0.0	OFF	2135	0	0.00	0	62.4	62.4	62.4
7-8 PM	1497	0.0	1499	1497	0	1.92	25	63.6	38.4	31.5
8-9 PM	1259	0.0	1500	1259	0	0.71	0	64.0	51.4	36.6
9-10 PM	1042	0.0	1500	1042	0	0.52	0	64.5	54.5	41.5
10-11 PM	748	0.0	1500	748	0	0.49	0	65.0	55.4	42.6
11PM-MID	488	0.0	1500	488	0	0.47	0	65.5	56.2	43.5

"OFF" INDICATES NO ROAD WORK (ALL LANES OPEN TO TRAFFIC)

----- SITE BREAKDOWN DELAYS -----	
BREAKDOWN DURATION (MINS)	0
RANGE OF QUEUE DELAY - MIN	0.0
(VEH-H) MAX	0.0
AV BREAKDOWNS PER DAY	0.00
AV QUEUE DELAY/DAY (VEH-H)	0.0
AV TOTAL DELAY/DAY (VEH-H)	0.0

----- SITE ACCIDENT DELAYS -----	
BREAKDOWN DURATION (MINS)	0
RANGE OF QUEUE DELAY - MIN	0
(VEH-H) MAX	0
AV BREAKDOWNS PER DAY	0
AV QUEUE DELAY/DAY (VEH-H)	0
AV TOTAL DELAY/DAY (VEH-H)	0

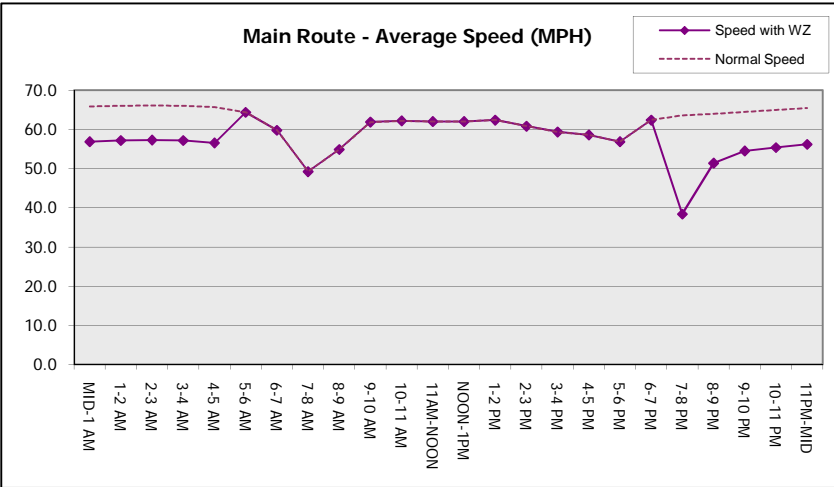
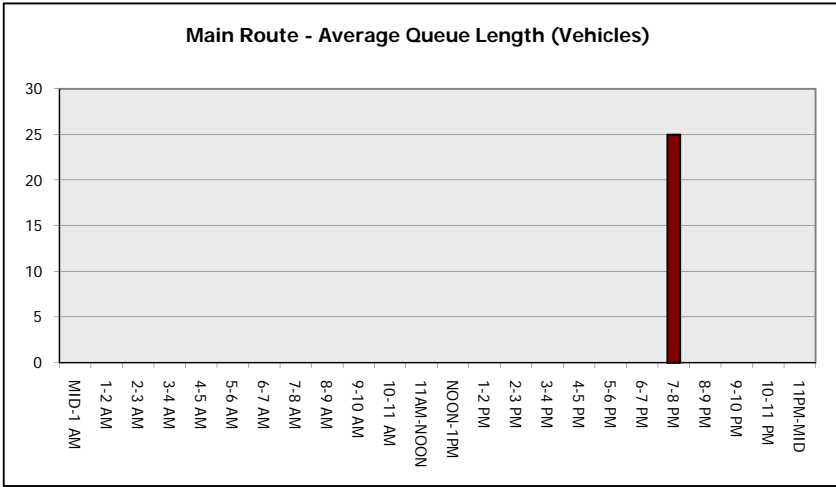
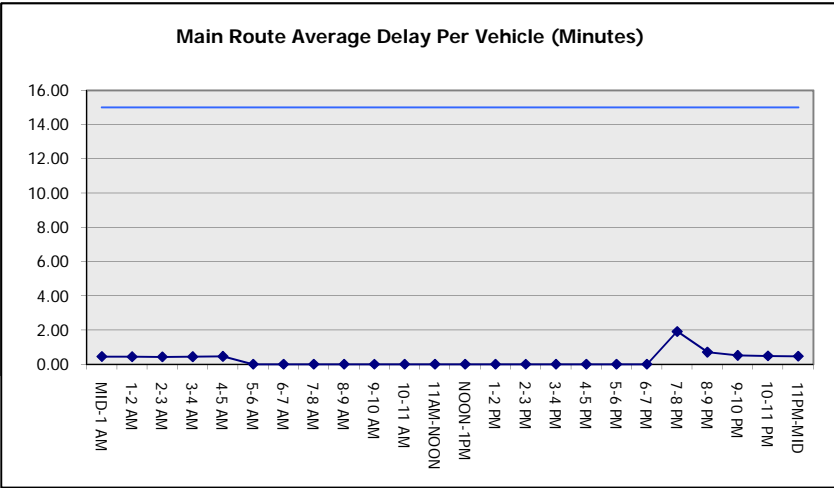
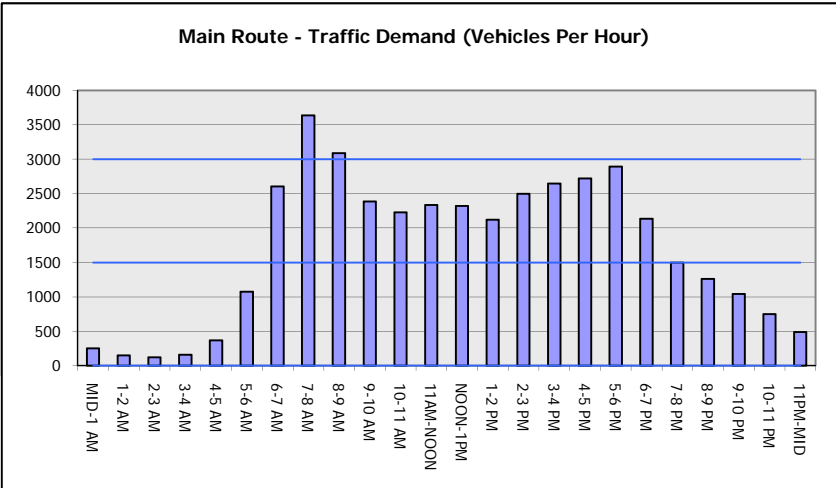
AVERAGE ACCIDENT NUMBERS (PIA/DAY)	
MAIN ROUTE WITHOUT WORKS	0.0201
MAIN ROUTE WITH WORKS	0.0197
'DIVERSION'	0.0000
PIA: Personal Injury Accidents	
IMPACTS ON ROAD USERS	
ROAD USER COSTS PER DAY	\$1,247
CONGESTED HOURS PER DAY*	0

*Delays Exceeding User-Specified Maximum

IH 43: STH 57/167 TO STH 100 (MILWAUKEE AND OZAUKEE COUNTIES)
NIGHTTIME CLOSURE
NO DIVERSION ROUTE (MAX QUEUE METHOD)

AUGUST
 Analyzed for 2009
 Construction Season

GRAPHICAL REPRESENTATION OF TRAFFIC MODEL INPUT AND OUTPUT
MON-THUR SOUTHBOUND DIRECTION



IH 43: STH 57/167 TO STH 100 (MILWAUKEE AND OZAUKEE COUNTIES) NIGHTTIME CLOSURE NO DIVERSION ROUTE (MAX QUEUE METHOD)	AUGUST
	Analyzed for 2009 Construction Season

SUMMARY OF TRAFFIC MODEL OUTPUT

MON-THUR NORTHBOUND DIRECTION

TIME OF DAY	FLOWS AND CAPACITY IN VEH/HR						AVERAGE SPEEDS IN MPH			
	MAIN ROUTE		SITE CAPA CITY	FLOW		AV.DEL PER VEH (MINS)	AVERAGE QUEUE (VEH)	MAIN ROUTE		SITE
	DEMAND FLOW	PCT HEAVY		MAIN ROUTE	'DIVER TED'			WITHOUT WORK ZONE	WITH WORK ZONE	
MID-1 AM	405	0.0	1500	405	0	0.46	0	65.6	56.4	43.9
1-2 AM	214	0.0	1500	214	0	0.44	0	66.0	57.0	44.6
2-3 AM	172	0.0	1500	172	0	0.44	0	66.1	57.1	44.8
3-4 AM	161	0.0	1500	161	0	0.44	0	66.1	57.2	44.8
4-5 AM	260	0.0	1500	260	0	0.45	0	65.9	56.9	44.5
5-6 AM	725	0.0	OFF	725	0	0.00	0	65.0	65.0	65.0
6-7 AM	1665	0.0	OFF	1665	0	0.00	0	63.3	63.3	63.3
7-8 AM	2444	0.0	OFF	2444	0	0.00	0	61.5	61.5	61.5
8-9 AM	2406	0.0	OFF	2406	0	0.00	0	61.9	61.9	61.9
9-10 AM	2023	0.0	OFF	2023	0	0.00	0	62.6	62.6	62.6
10-11 AM	2105	0.0	OFF	2105	0	0.00	0	62.5	62.5	62.5
11AM-NOON	2251	0.0	OFF	2251	0	0.00	0	62.2	62.2	62.2
NOON-1PM	2283	0.0	OFF	2283	0	0.00	0	62.2	62.2	62.2
1-2 PM	2290	0.0	OFF	2290	0	0.00	0	62.1	62.1	62.1
2-3 PM	2698	0.0	OFF	2698	0	0.00	0	58.9	58.9	58.9
3-4 PM	3136	0.0	OFF	3136	0	0.00	0	54.4	54.4	54.4
4-5 PM	3145	0.0	OFF	3145	0	0.00	0	54.3	54.3	54.3
5-6 PM	3356	0.0	OFF	3356	0	0.00	0	52.1	52.1	52.1
6-7 PM	2478	0.0	OFF	2478	0	0.00	0	61.1	61.1	61.1
7-8 PM	1730	0.0	1499	1730	0	5.90	145	63.2	21.0	30.8
8-9 PM	1515	0.0	1499	1515	0	10.30	250	63.6	14.0	30.8
9-10 PM	1333	0.0	1499	1333	0	7.34	179	63.9	18.1	31.4
10-11 PM	965	0.0	1500	965	0	0.70	6	64.6	52.0	41.7
11PM-MID	636	0.0	1500	636	0	0.48	0	65.2	55.8	43.0

"OFF" INDICATES NO ROAD WORK (ALL LANES OPEN TO TRAFFIC)

----- SITE BREAKDOWN DELAYS -----	
BREAKDOWN DURATION (MINS)	0
RANGE OF QUEUE DELAY - MIN (VEH-H) MAX	0.0
AV BREAKDOWNS PER DAY	0.00
AV QUEUE DELAY/DAY (VEH-H)	0.0
AV TOTAL DELAY/DAY (VEH-H)	0.0

----- SITE ACCIDENT DELAYS -----	
BREAKDOWN DURATION (MINS)	0
RANGE OF QUEUE DELAY - MIN (VEH-H) MAX	0
AV BREAKDOWNS PER DAY	0
AV QUEUE DELAY/DAY (VEH-H)	0
AV TOTAL DELAY/DAY (VEH-H)	0

AVERAGE ACCIDENT NUMBERS (PIA/DAY)	
MAIN ROUTE WITHOUT WORKS	0.0199
MAIN ROUTE WITH WORKS	0.0194
'DIVERSION'	0.0000

PIA: Personal Injury Accidents

ECONOMIC IMPACT ON ROAD USERS	
ROAD USER COSTS PER DAY	\$8,617
CONGESTED HOURS PER DAY*	0

*Delays Exceeding User-Specified Maximum

IH 43: STH 57/167 TO STH 100 (MILWAUKEE AND OZAUKEE COUNTIES)
NIGHTTIME CLOSURE
NO DIVERSION ROUTE (MAX QUEUE METHOD)

AUGUST

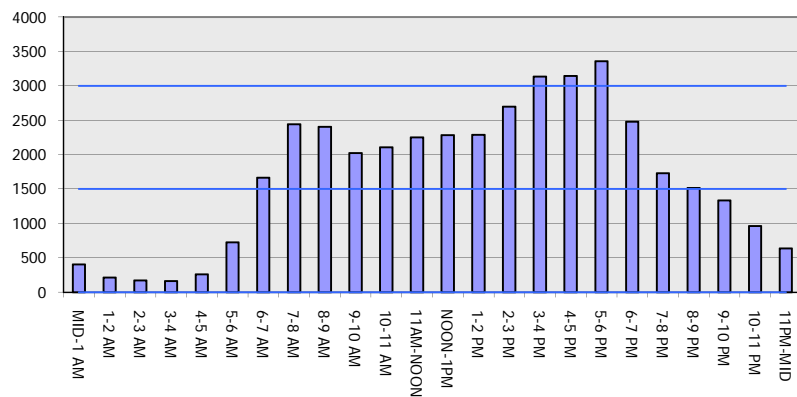
Analyzed for 2009
 Construction Season

GRAPHICAL REPRESENTATION OF TRAFFIC MODEL INPUT AND OUTPUT

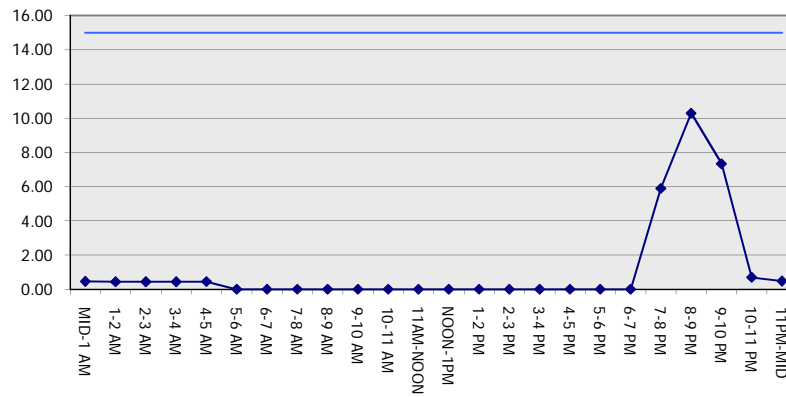
MON-THUR

NORTHBOUND DIRECTION

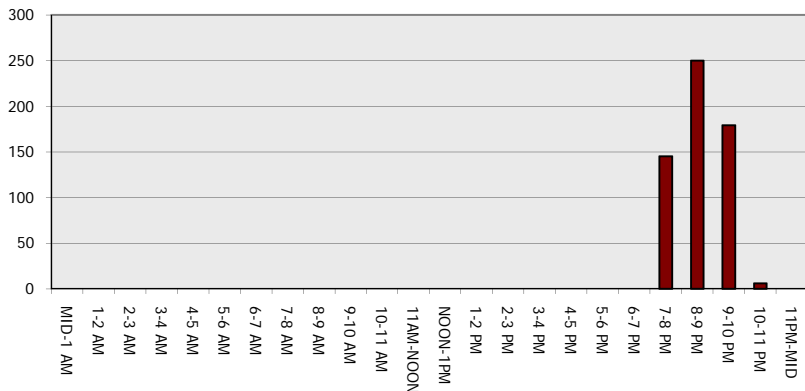
Main Route - Traffic Demand (Vehicles Per Hour)



Main Route Average Delay Per Vehicle (Minutes)



Main Route - Average Queue Length (Vehicles)



Main Route - Average Speed (MPH)

