

IH 43: STH 57/167 TO STH 100 (MILWAUKEE AND OZAUKEE COUNTIES) NIGHTTIME CLOSURE NO DIVERSION ROUTE (MAX QUEUE METHOD)	AUGUST
	Analyzed for 2009 Construction Season

SUMMARY OF TRAFFIC MODEL OUTPUT

FRIDAY SOUTHBOUND DIRECTION

TIME OF DAY	FLOWS AND CAPACITY IN VEH/HR						AVERAGE SPEEDS IN MPH			
	MAIN ROUTE		SITE CAPA CITY	FLOW		AV.DEL PER VEH (MINS)	AVERAGE QUEUE (VEH)	MAIN ROUTE		SITE
	DEMAND FLOW	PCT HEAVY		MAIN ROUTE	'DIVER TED'			WITHOUT WORK ZONE	WITH WORK ZONE	
MID-1 AM	293	0.0	1500	293	0	0.45	0	65.8	56.8	44.3
1-2 AM	169	0.0	1500	169	0	0.44	0	66.1	57.1	44.8
2-3 AM	141	0.0	1500	141	0	0.44	0	66.1	57.3	44.9
3-4 AM	155	0.0	1500	155	0	0.44	0	66.1	57.2	44.8
4-5 AM	365	0.0	1500	365	0	0.46	0	65.7	56.6	44.0
5-6 AM	1008	0.0	OFF	1008	0	0.00	0	64.5	64.5	64.5
6-7 AM	2318	0.0	OFF	2318	0	0.00	0	62.0	62.0	62.0
7-8 AM	3074	0.0	OFF	3074	0	0.00	0	55.0	55.0	55.0
8-9 AM	2935	0.0	OFF	2935	0	0.00	0	56.4	56.4	56.4
9-10 AM	2374	0.0	OFF	2374	0	0.00	0	62.0	62.0	62.0
10-11 AM	2240	0.0	OFF	2240	0	0.00	0	62.2	62.2	62.2
11AM-NOON	2377	0.0	OFF	2377	0	0.00	0	62.0	62.0	62.0
NOON-1PM	2503	0.0	OFF	2503	0	0.00	0	60.9	60.9	60.9
1-2 PM	2506	0.0	OFF	2506	0	0.00	0	60.9	60.9	60.9
2-3 PM	2676	0.0	OFF	2676	0	0.00	0	59.1	59.1	59.1
3-4 PM	2892	0.0	OFF	2892	0	0.00	0	56.9	56.9	56.9
4-5 PM	3048	0.0	OFF	3048	0	0.00	0	55.3	55.3	55.3
5-6 PM	3042	0.0	OFF	3042	0	0.00	0	55.3	55.3	55.3
6-7 PM	2400	0.0	OFF	2400	0	0.00	0	61.9	61.9	61.9
7-8 PM	1670	0.0	1499	1670	0	5.14	119	63.3	23.0	30.8
8-9 PM	1298	0.0	1499	1298	0	3.33	84	64.0	29.8	33.1
9-10 PM	1225	0.0	1500	1225	0	0.67	0	64.1	52.1	37.7
10-11 PM	1004	0.0	1500	1004	0	0.52	0	64.5	54.6	41.7
11PM-MID	706	0.0	1500	706	0	0.49	0	65.1	55.5	42.7

"OFF" INDICATES NO ROAD WORK (ALL LANES OPEN TO TRAFFIC)

----- SITE BREAKDOWN DELAYS -----	
BREAKDOWN DURATION (MINS)	0
RANGE OF QUEUE DELAY - MIN (VEH-H) MAX	0.0
AV BREAKDOWNS PER DAY	0.00
AV QUEUE DELAY/DAY (VEH-H)	0.0
AV TOTAL DELAY/DAY (VEH-H)	0.0

----- SITE ACCIDENT DELAYS -----	
BREAKDOWN DURATION (MINS)	0
RANGE OF QUEUE DELAY - MIN (VEH-H) MAX	0
AV BREAKDOWNS PER DAY	0
AV QUEUE DELAY/DAY (VEH-H)	0
AV TOTAL DELAY/DAY (VEH-H)	0

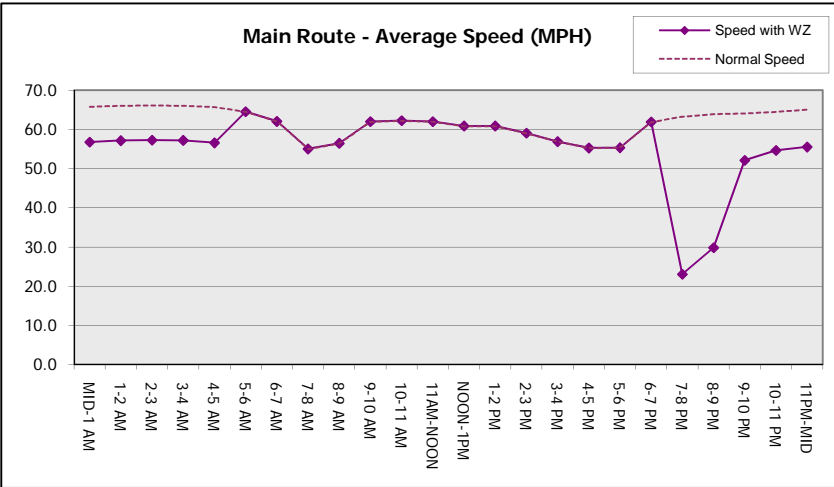
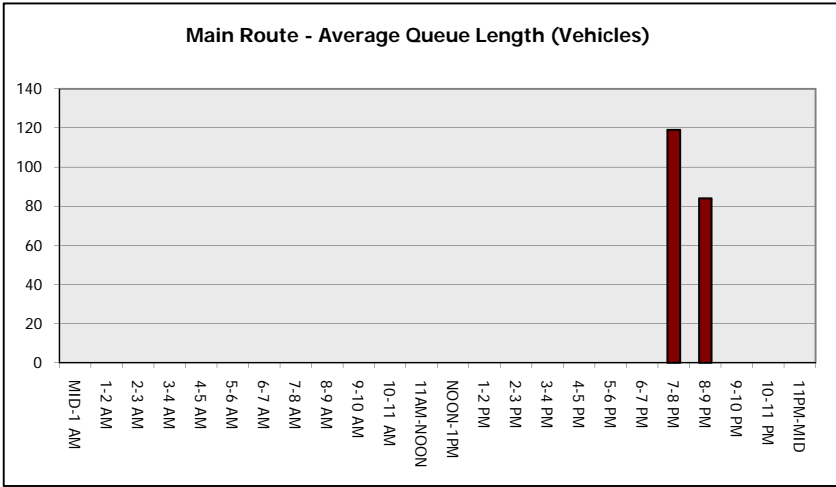
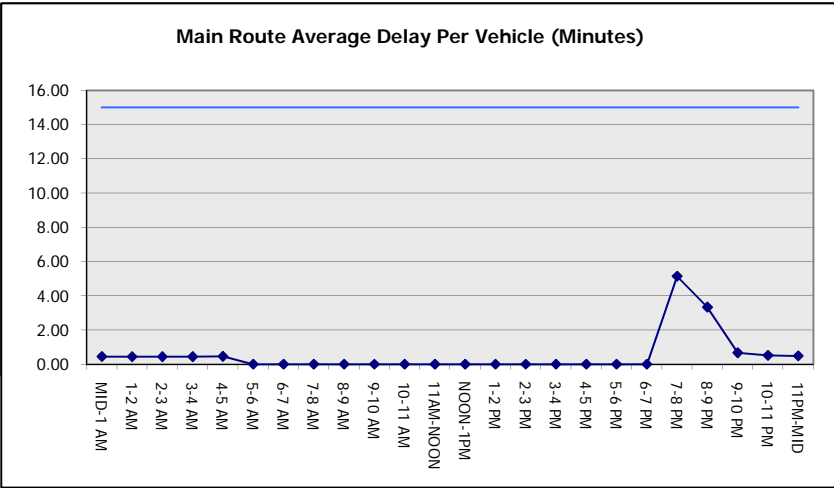
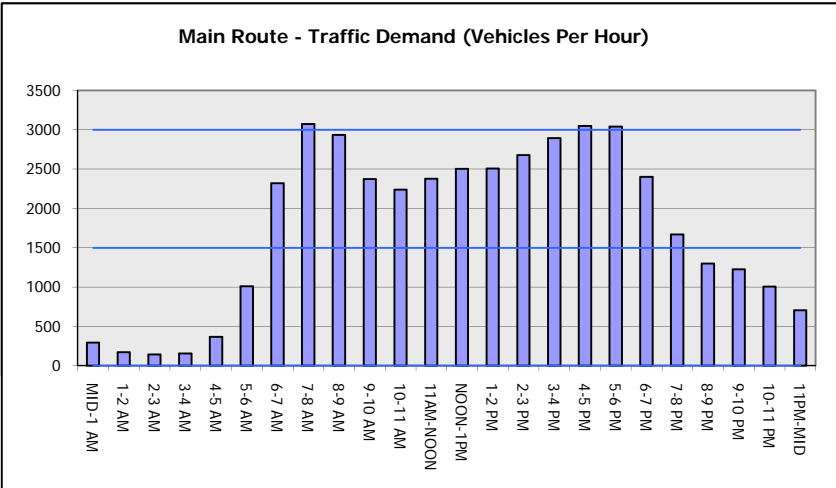
AVERAGE ACCIDENT NUMBERS (PIA/DAY)	
MAIN ROUTE WITHOUT WORKS	0.0209
MAIN ROUTE WITH WORKS	0.0205
'DIVERSION'	0.0000
<small>PIA: Personal Injury Accidents</small>	
IMPACTS ON ROAD USERS	
ROAD USER COSTS PER DAY	\$3,744
CONGESTED HOURS PER DAY*	0

*Delays Exceeding User-Specified Maximum

IH 43: STH 57/167 TO STH 100 (MILWAUKEE AND OZAUKEE COUNTIES)
NIGHTTIME CLOSURE
NO DIVERSION ROUTE (MAX QUEUE METHOD)

AUGUST
 Analyzed for 2009
 Construction Season

GRAPHICAL REPRESENTATION OF TRAFFIC MODEL INPUT AND OUTPUT
FRIDAY SOUTHBOUND DIRECTION



IH 43: STH 57/167 TO STH 100 (MILWAUKEE AND OZAUKEE COUNTIES) NIGHTTIME CLOSURE NO DIVERSION ROUTE (MAX QUEUE METHOD)	AUGUST
	Analyzed for 2009 Construction Season

SUMMARY OF TRAFFIC MODEL OUTPUT

FRIDAY NORTHBOUND DIRECTION

TIME OF DAY	FLOWS AND CAPACITY IN VEH/HR							AVERAGE SPEEDS IN MPH			
	MAIN ROUTE		SITE CAPA CITY	FLOW		AV.DEL PER VEH (MINS)	AVERAGE QUEUE (VEH)	MAIN ROUTE		SITE	
	DEMAND FLOW	PCT HEAVY		MAIN ROUTE	'DIVER TED'			WITHOUT WORK ZONE	WITH WORK ZONE		
MID-1 AM	477	0.0	1500	477	0	0.47	0	65.5	56.2	43.6	
1-2 AM	265	0.0	1500	265	0	0.45	0	65.9	56.9	44.4	
2-3 AM	201	0.0	1500	201	0	0.44	0	66.0	57.1	44.6	
3-4 AM	208	0.0	1500	208	0	0.44	0	66.0	57.0	44.6	
4-5 AM	303	0.0	1500	303	0	0.45	0	65.8	56.8	44.3	
5-6 AM	759	0.0	OFF	759	0	0.00	0	65.0	65.0	65.0	
6-7 AM	1680	0.0	OFF	1680	0	0.00	0	63.3	63.3	63.3	
7-8 AM	2226	0.0	OFF	2226	0	0.00	0	62.2	62.2	62.2	
8-9 AM	2538	0.0	OFF	2538	0	0.00	0	60.5	60.5	60.5	
9-10 AM	2218	0.0	OFF	2218	0	0.00	0	62.2	62.2	62.2	
10-11 AM	2372	0.0	OFF	2372	0	0.00	0	62.0	62.0	62.0	
11AM-NOON	2712	0.0	OFF	2712	0	0.00	0	58.7	58.7	58.7	
NOON-1PM	2857	0.0	OFF	2857	0	0.00	0	57.3	57.3	57.3	
1-2 PM	2983	0.0	OFF	2983	0	0.00	0	56.0	56.0	56.0	
2-3 PM	3239	0.0	OFF	3239	0	0.00	0	53.3	53.3	53.3	
3-4 PM	3472	0.0	OFF	3472	0	0.00	0	50.9	50.9	50.9	
4-5 PM	3632	0.0	OFF	3632	0	0.00	0	49.3	49.3	49.3	
5-6 PM	3637	0.0	OFF	3637	0	0.00	0	49.2	49.2	49.2	
6-7 PM	2721	0.0	OFF	2721	0	0.00	0	58.6	58.6	58.6	
7-8 PM	2048	0.0	1499	1881	167	10.36+	284	62.6	14.3	30.8	
8-9 PM	1670	0.0	1499	1522	148	16.01+	404	63.3	10.4	30.8	
9-10 PM	1627	0.0	1500	1500	127	16.12+	407	63.3	10.4	30.8	
10-11 PM	1674	0.0	1500	1500	174	16.12+	407	63.3	10.4	30.8	
11PM-MID	1059	0.0	1499	1059	0	6.48	221	64.4	19.9	35.8	

"OFF" INDICATES NO ROAD WORK (ALL LANES OPEN TO TRAFFIC)

+ INDICATES QUEUEING EXCEEDS USER-SPECIFIED MAXIMUM LIMIT

----- SITE BREAKDOWN DELAYS -----	
BREAKDOWN DURATION (MINS)	0
RANGE OF QUEUE DELAY - MIN (VEH-H) MAX	0.0
AV BREAKDOWNS PER DAY	0.00
AV QUEUE DELAY/DAY (VEH-H)	0.0
AV TOTAL DELAY/DAY (VEH-H)	0.0

----- SITE ACCIDENT DELAYS -----	
BREAKDOWN DURATION (MINS)	0
RANGE OF QUEUE DELAY - MIN (VEH-H) MAX	0
AV BREAKDOWNS PER DAY	0
AV QUEUE DELAY/DAY (VEH-H)	0
AV TOTAL DELAY/DAY (VEH-H)	0

AVERAGE ACCIDENT NUMBERS (PIA/DAY)	
MAIN ROUTE WITHOUT WORKS	0.0230
MAIN ROUTE WITH WORKS	0.0221
'DIVERSION'	0.0007

PIA: Personal Injury Accidents

ECONOMIC IMPACT ON ROAD USERS	
ROAD USER COSTS PER DAY	\$26,952
CONGESTED HOURS PER DAY*	4

*Delays Exceeding User-Specified Maximum

IH 43: STH 57/167 TO STH 100 (MILWAUKEE AND OZAUKEE COUNTIES)
NIGHTTIME CLOSURE
NO DIVERSION ROUTE (MAX QUEUE METHOD)

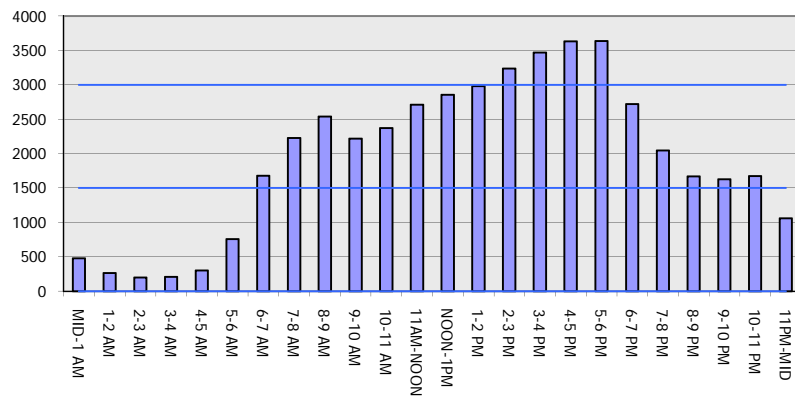
AUGUST

Analyzed for 2009
 Construction Season

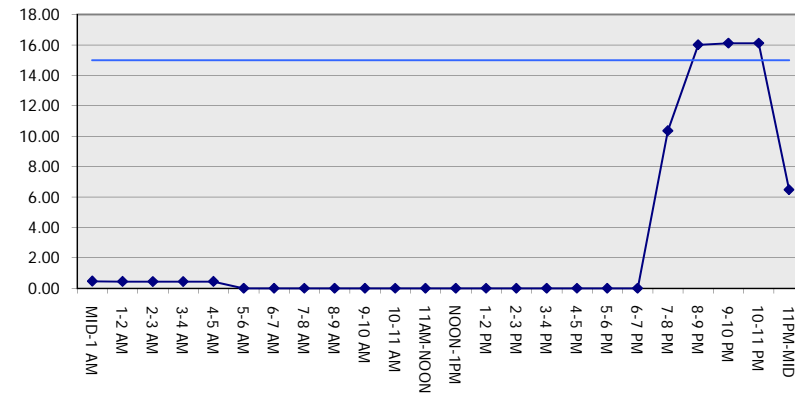
GRAPHICAL REPRESENTATION OF TRAFFIC MODEL INPUT AND OUTPUT

FRIDAY NORTHBOUND DIRECTION

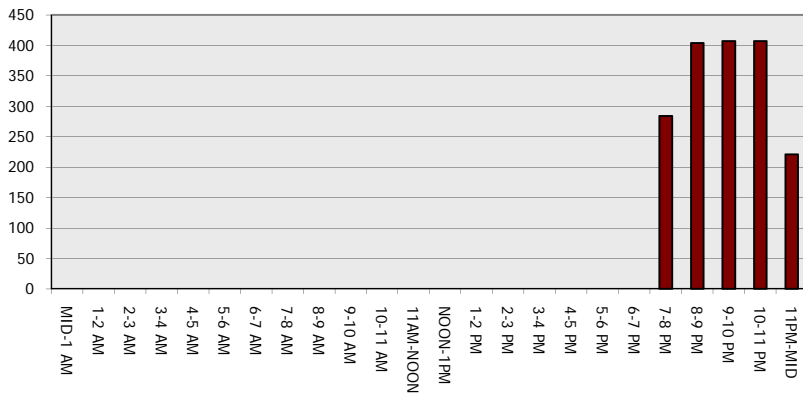
Main Route - Traffic Demand (Vehicles Per Hour)



Main Route Average Delay Per Vehicle (Minutes)



Main Route - Average Queue Length (Vehicles)



Main Route - Average Speed (MPH)

