

<b>IH 94: CTH BB/RAWSON AVE TO STH 100/RYAN RD (MILWAUKEE COUNTY)</b> <b>NIGHTTIME 2 LANE CLOSURE</b> <b>NO DIVERSION ROUTE (MAX QUEUE METHOD)</b>	<b>OCTOBER</b>
	Analyzed for 2009 Construction Season

**SUMMARY OF TRAFFIC MODEL OUTPUT**

SUNDAY WESTBOUND DIRECTION

TIME OF DAY	FLOWS AND CAPACITY IN VEH/HR						AVERAGE SPEEDS IN MPH				
	MAIN ROUTE		SITE CAPA CITY	FLOW		AV.DEL PER VEH (MINS)	AVERAGE QUEUE (VEH)	MAIN ROUTE		SITE	
	DEMAND FLOW	PCT HEAVY		MAIN ROUTE	'DIVER TED'			WITHOUT WORK ZONE	WITH WORK ZONE		
MID-1 AM	870	0.0	1500	870	0	0.48	0	70.2	59.2	45.3	
1-2 AM	479	0.0	1500	479	0	0.43	0	70.2	60.1	47.0	
2-3 AM	400	0.0	1500	400	0	0.42	0	70.2	60.3	47.4	
3-4 AM	267	0.0	1500	267	0	0.40	0	70.2	60.7	48.0	
4-5 AM	288	0.0	1500	288	0	0.41	0	70.2	60.6	47.9	
5-6 AM	422	0.0	1500	422	0	0.42	0	70.2	60.2	47.3	
6-7 AM	754	0.0	1500	754	0	0.46	0	70.2	59.4	45.8	
7-8 AM	964	0.0	1500	964	0	0.49	0	70.2	58.9	45.0	
8-9 AM	1342	0.0	1499	1342	0	0.80	0	70.2	53.5	36.8	
9-10 AM	1843	0.0	OFF	1843	0	0.00	0	69.7	69.7	69.7	
10-11 AM	2386	0.0	OFF	2386	0	0.00	0	69.1	69.1	69.1	
11AM-NOON	2778	0.0	OFF	2778	0	0.00	0	68.6	68.6	68.6	
NOON-1PM	3008	0.0	OFF	3008	0	0.00	0	68.3	68.3	68.3	
1-2 PM	3023	0.0	OFF	3023	0	0.00	0	68.3	68.3	68.3	
2-3 PM	2994	0.0	OFF	2994	0	0.00	0	68.3	68.3	68.3	
3-4 PM	3181	0.0	OFF	3181	0	0.00	0	68.1	68.1	68.1	
4-5 PM	3166	0.0	OFF	3166	0	0.00	0	68.1	68.1	68.1	
5-6 PM	3100	0.0	OFF	3100	0	0.00	0	68.2	68.2	68.2	
6-7 PM	2773	0.0	OFF	2773	0	0.00	0	68.6	68.6	68.6	
7-8 PM	2373	0.0	1499	1934	439	12.66+	318	69.1	11.8	33.1	
8-9 PM	1843	0.0	1499	1485	358	16.23+	398	69.7	9.6	32.5	
9-10 PM	1667	0.0	1499	1481	186	16.22+	397	70.0	9.6	32.5	
10-11 PM	1226	0.0	1499	1226	0	11.26	288	70.2	13.0	33.8	
11PM-MID	874	0.0	1500	874	0	0.78	13	70.2	53.8	45.2	

"OFF" INDICATES NO ROAD WORK (ALL LANES OPEN TO TRAFFIC)

+ INDICATES QUEUEING EXCEEDS USER-SPECIFIED MAXIMUM LIMIT

*----- SITE BREAKDOWN DELAYS -----*	
BREAKDOWN DURATION (MINS)	0
RANGE OF QUEUE DELAY - MIN (VEH-H) MAX	0.0
AV BREAKDOWNS PER DAY	0.00
AV QUEUE DELAY/DAY (VEH-H)	0.0
AV TOTAL DELAY/DAY (VEH-H)	0.0

*----- SITE ACCIDENT DELAYS -----*	
BREAKDOWN DURATION (MINS)	0
RANGE OF QUEUE DELAY - MIN (VEH-H) MAX	0
AV BREAKDOWNS PER DAY	0
AV QUEUE DELAY/DAY (VEH-H)	0
AV TOTAL DELAY/DAY (VEH-H)	0

AVERAGE ACCIDENT NUMBERS (PIA/DAY)	
MAIN ROUTE WITHOUT WORKS	0.0201
MAIN ROUTE WITH WORKS	0.0188
'DIVERSION'	0.0011
<small>PIA: Personal Injury Accidents</small>	
IMPACTS ON ROAD USERS	
ROAD USER COSTS PER DAY	\$27,467
CONGESTED HOURS PER DAY*	3

\*Delays Exceeding User-Specified Maximum

**IH 94: CTH BB/RAWSON AVE TO STH 100/RYAN RD (MILWAUKEE COUNTY)**  
**NIGHTTIME 2 LANE CLOSURE**  
**NO DIVERSION ROUTE (MAX QUEUE METHOD)**

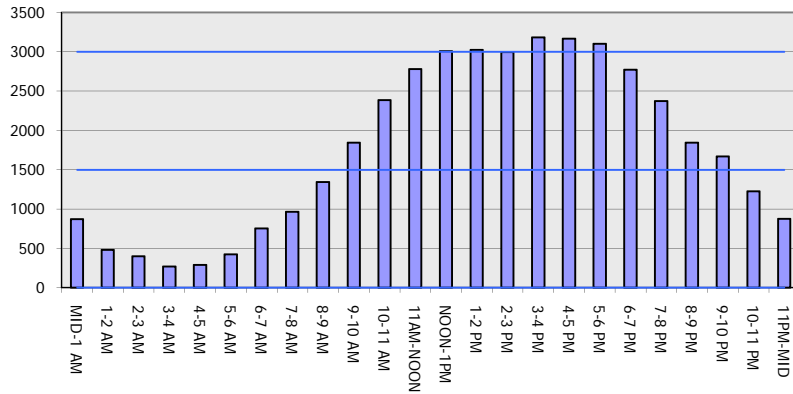
**OCTOBER**

Analyzed for 2009  
 Construction Season

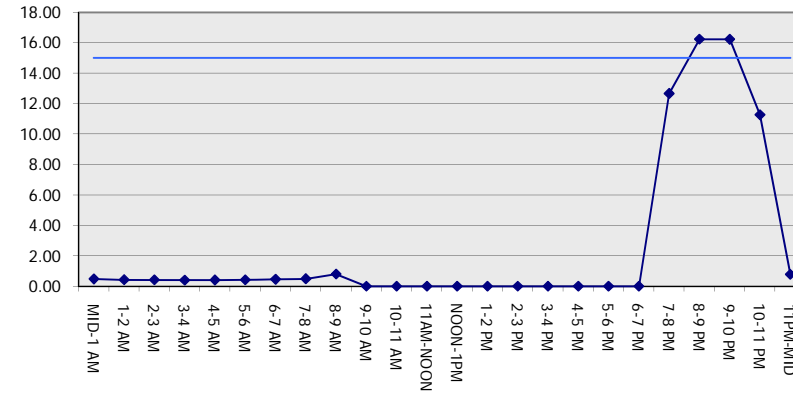
**GRAPHICAL REPRESENTATION OF TRAFFIC MODEL INPUT AND OUTPUT**

**SUNDAY WESTBOUND DIRECTION**

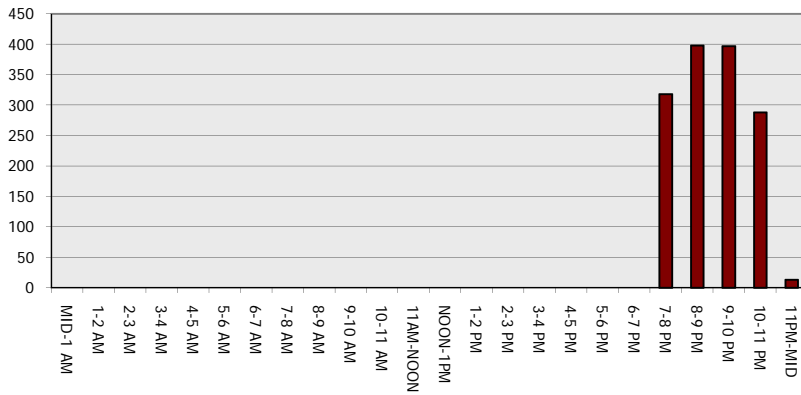
**Main Route - Traffic Demand (Vehicles Per Hour)**



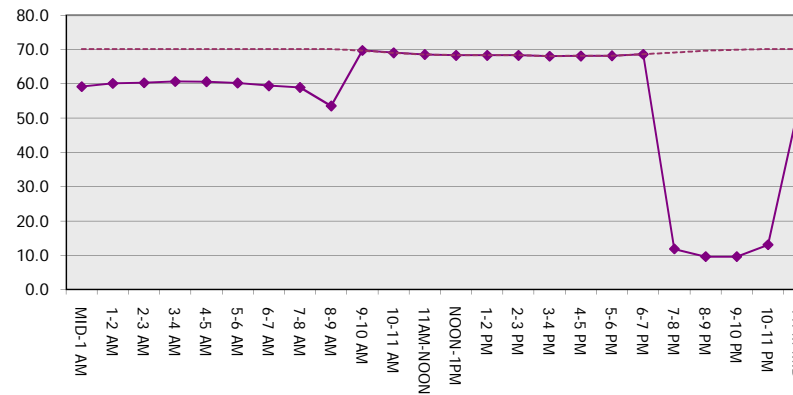
**Main Route Average Delay Per Vehicle (Minutes)**



**Main Route - Average Queue Length (Vehicles)**



**Main Route - Average Speed (MPH)**



<b>IH 94: CTH BB/RAWSON AVE TO STH 100/Ryan RD (MILWAUKEE COUNTY)</b> <b>NIGHTTIME 2 LANE CLOSURE</b> <b>NO DIVERSION ROUTE (MAX QUEUE METHOD)</b>	<b>OCTOBER</b>
	Analyzed for 2009 Construction Season

**SUMMARY OF TRAFFIC MODEL OUTPUT**

SUNDAY EASTBOUND DIRECTION

TIME OF DAY	FLOWS AND CAPACITY IN VEH/HR						AVERAGE SPEEDS IN MPH			
	MAIN ROUTE		SITE CAPA CITY	FLOW		AV.DEL PER VEH (MINS)	AVERAGE QUEUE (VEH)	MAIN ROUTE		SITE
	DEMAND FLOW	PCT HEAVY		MAIN ROUTE	'DIVER TED'			WITHOUT WORK ZONE	WITH WORK ZONE	
MID-1 AM	867	0.0	1500	867	0	0.48	0	70.2	59.2	45.3
1-2 AM	587	0.0	1500	587	0	0.44	0	70.2	59.9	46.5
2-3 AM	629	0.0	1500	629	0	0.45	0	70.2	59.7	46.3
3-4 AM	395	0.0	1500	395	0	0.42	0	70.2	60.3	47.4
4-5 AM	424	0.0	1500	424	0	0.42	0	70.2	60.2	47.3
5-6 AM	585	0.0	1500	585	0	0.44	0	70.2	59.9	46.5
6-7 AM	868	0.0	1500	868	0	0.48	0	70.2	59.2	45.3
7-8 AM	1099	0.0	1499	1099	0	0.54	0	70.2	57.9	43.3
8-9 AM	1483	0.0	1499	1483	0	1.38	15	70.2	45.6	34.4
9-10 AM	2204	0.0	OFF	2204	0	0.01	0	69.3	69.1	69.1
10-11 AM	2703	0.0	OFF	2703	0	0.00	0	68.7	68.7	68.7
11AM-NOON	2955	0.0	OFF	2955	0	0.00	0	68.4	68.4	68.4
NOON-1PM	3355	0.0	OFF	3355	0	0.00	0	67.9	67.9	67.9
1-2 PM	3507	0.0	OFF	3507	0	0.00	0	67.7	67.7	67.7
2-3 PM	3532	0.0	OFF	3532	0	0.00	0	67.6	67.6	67.6
3-4 PM	3633	0.0	OFF	3633	0	0.00	0	67.3	67.3	67.3
4-5 PM	3581	0.0	OFF	3581	0	0.00	0	67.6	67.6	67.6
5-6 PM	3189	0.0	OFF	3189	0	0.00	0	68.1	68.1	68.1
6-7 PM	2986	0.0	OFF	2986	0	0.00	0	68.3	68.3	68.3
7-8 PM	2500	0.0	1499	1828	672	13.15+	328	68.9	11.4	36.2
8-9 PM	1828	0.0	1499	1550	279	16.07+	394	69.7	9.6	32.5
9-10 PM	1483	0.0	1500	1468	16	15.67+	383	70.2	9.9	32.4
10-11 PM	1063	0.0	1499	1063	0	4.12	156	70.2	27.0	39.0
11PM-MID	817	0.0	1500	817	0	0.47	0	70.2	59.3	45.5

"OFF" INDICATES NO ROAD WORK (ALL LANES OPEN TO TRAFFIC)

+ INDICATES QUEUEING EXCEEDS USER-SPECIFIED MAXIMUM LIMIT

BREAKDOWN DURATION (MINS)	0
RANGE OF QUEUE DELAY - MIN (VEH-H) MAX	0.0
AV BREAKDOWNS PER DAY	0.00
AV QUEUE DELAY/DAY (VEH-H)	0.0
AV TOTAL DELAY/DAY (VEH-H)	0.0

BREAKDOWN DURATION (MINS)	0
RANGE OF QUEUE DELAY - MIN (VEH-H) MAX	0
AV BREAKDOWNS PER DAY	0
AV QUEUE DELAY/DAY (VEH-H)	0
AV TOTAL DELAY/DAY (VEH-H)	0

MAIN ROUTE WITHOUT WORKS	0.0221
MAIN ROUTE WITH WORKS	0.0207
'DIVERSION'	0.0011

PIA: Personal Injury Accidents

ROAD USER COSTS PER DAY	\$24,926
CONGESTED HOURS PER DAY*	3

\*Delays Exceeding User-Specified Maximum

**IH 94: CTH BB/RAWSON AVE TO STH 100/RYAN RD (MILWAUKEE COUNTY)**  
**NIGHTTIME 2 LANE CLOSURE**  
**NO DIVERSION ROUTE (MAX QUEUE METHOD)**

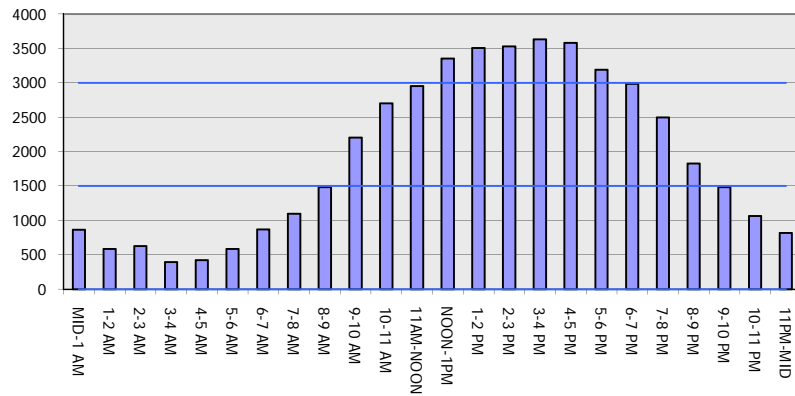
**OCTOBER**

Analyzed for 2009  
 Construction Season

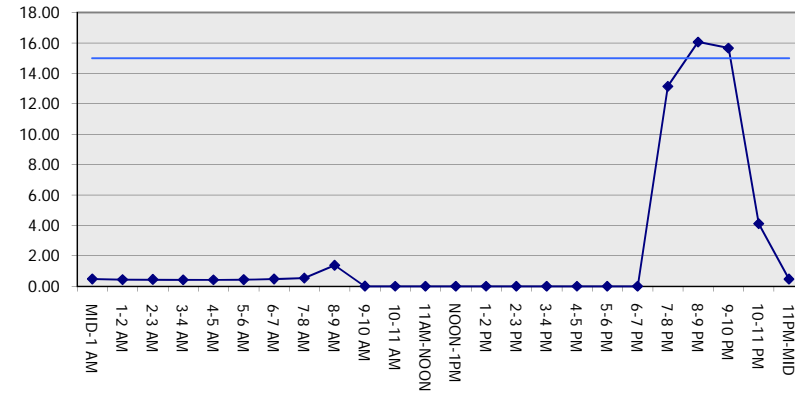
**GRAPHICAL REPRESENTATION OF TRAFFIC MODEL INPUT AND OUTPUT**

**SUNDAY EASTBOUND DIRECTION**

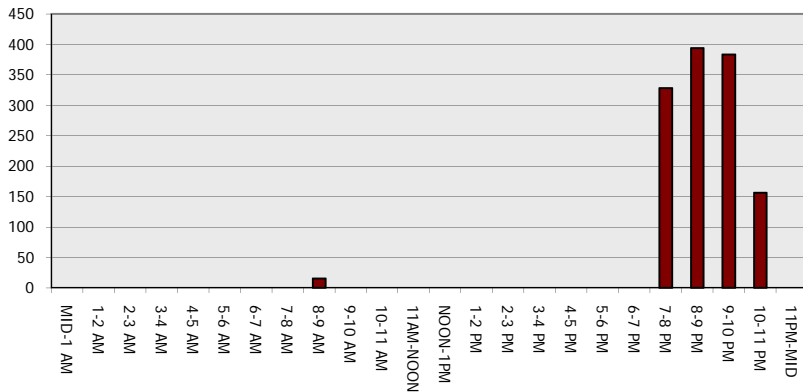
**Main Route - Traffic Demand (Vehicles Per Hour)**



**Main Route Average Delay Per Vehicle (Minutes)**



**Main Route - Average Queue Length (Vehicles)**



**Main Route - Average Speed (MPH)**

