

IH 94: CTH BB/RAWSON AVE TO STH 100/Ryan RD (MILWAUKEE COUNTY) NIGHTTIME CLOSURE NO DIVERSION ROUTE (MAX QUEUE METHOD)	OCTOBER
	Analyzed for 2009 Construction Season

SUMMARY OF TRAFFIC MODEL OUTPUT

SUNDAY WESTBOUND DIRECTION

TIME OF DAY	FLOWS AND CAPACITY IN VEH/HR						AVERAGE SPEEDS IN MPH			
	MAIN ROUTE		SITE CAPA CITY	FLOW		AV.DEL PER VEH (MINS)	AVERAGE QUEUE (VEH)	MAIN ROUTE		SITE
	DEMAND FLOW	PCT HEAVY		MAIN ROUTE	'DIVER TED'			WITHOUT WORK ZONE	WITH WORK ZONE	
MID-1 AM	870	0.0	3000	870	0	0.36	0	70.2	61.5	49.7
1-2 AM	479	0.0	3000	479	0	0.36	0	70.2	61.5	49.7
2-3 AM	400	0.0	3000	400	0	0.36	0	70.2	61.5	49.7
3-4 AM	267	0.0	3000	267	0	0.36	0	70.2	61.5	49.7
4-5 AM	288	0.0	3000	288	0	0.36	0	70.2	61.5	49.7
5-6 AM	422	0.0	3000	422	0	0.36	0	70.2	61.5	49.7
6-7 AM	754	0.0	3000	754	0	0.36	0	70.2	61.5	49.7
7-8 AM	964	0.0	3000	964	0	0.36	0	70.2	61.5	49.7
8-9 AM	1342	0.0	3000	1342	0	0.36	0	70.2	61.5	49.7
9-10 AM	1843	0.0	OFF	1843	0	0.00	0	69.7	69.7	69.7
10-11 AM	2386	0.0	OFF	2386	0	0.00	0	69.1	69.1	69.1
11AM-NOON	2778	0.0	OFF	2778	0	0.00	0	68.6	68.6	68.6
NOON-1PM	3008	0.0	OFF	3008	0	0.00	0	68.3	68.3	68.3
1-2 PM	3023	0.0	OFF	3023	0	0.00	0	68.3	68.3	68.3
2-3 PM	2994	0.0	OFF	2994	0	0.00	0	68.3	68.3	68.3
3-4 PM	3181	0.0	OFF	3181	0	0.00	0	68.1	68.1	68.1
4-5 PM	3166	0.0	OFF	3166	0	0.00	0	68.1	68.1	68.1
5-6 PM	3100	0.0	OFF	3100	0	0.00	0	68.2	68.2	68.2
6-7 PM	2773	0.0	OFF	2773	0	0.00	0	68.6	68.6	68.6
7-8 PM	2373	0.0	3000	2373	0	0.35	0	69.1	60.9	49.4
8-9 PM	1843	0.0	3000	1843	0	0.35	0	69.7	61.4	49.7
9-10 PM	1667	0.0	3000	1667	0	0.36	0	70.0	61.4	49.7
10-11 PM	1226	0.0	3000	1226	0	0.36	0	70.2	61.5	49.7
11PM-MID	874	0.0	3000	874	0	0.36	0	70.2	61.5	49.7

"OFF" INDICATES NO ROAD WORK (ALL LANES OPEN TO TRAFFIC)

----- SITE BREAKDOWN DELAYS -----	
BREAKDOWN DURATION (MINS)	0
RANGE OF QUEUE DELAY - MIN (VEH-H) MAX	0.0
AV BREAKDOWNS PER DAY	0.00
AV QUEUE DELAY/DAY (VEH-H)	0.0
AV TOTAL DELAY/DAY (VEH-H)	0.0

----- SITE ACCIDENT DELAYS -----	
BREAKDOWN DURATION (MINS)	0
RANGE OF QUEUE DELAY - MIN (VEH-H) MAX	0
AV BREAKDOWNS PER DAY	0
AV QUEUE DELAY/DAY (VEH-H)	0
AV TOTAL DELAY/DAY (VEH-H)	0

AVERAGE ACCIDENT NUMBERS (PIA/DAY)	
MAIN ROUTE WITHOUT WORKS	0.0201
MAIN ROUTE WITH WORKS	0.0192
'DIVERSION'	0.0000
<small>PIA: Personal Injury Accidents</small>	
IMPACTS ON ROAD USERS	
ROAD USER COSTS PER DAY	\$1,111
CONGESTED HOURS PER DAY*	0

*Delays Exceeding User-Specified Maximum

IH 94: CTH BB/RAWSON AVE TO STH 100/RYAN RD (MILWAUKEE COUNTY)
NIGHTTIME CLOSURE
NO DIVERSION ROUTE (MAX QUEUE METHOD)

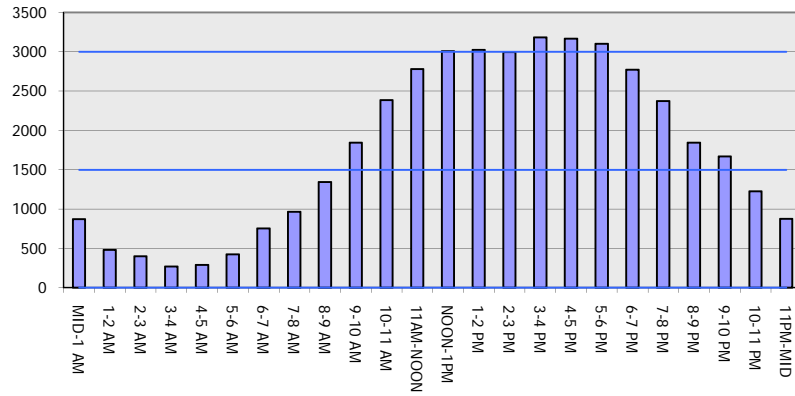
OCTOBER

Analyzed for 2009
 Construction Season

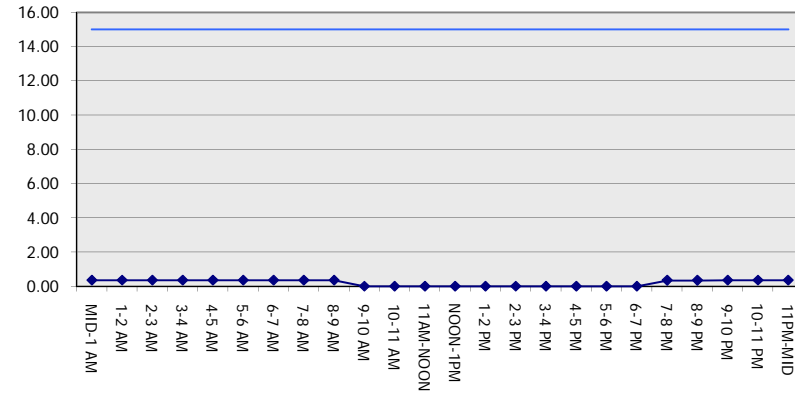
GRAPHICAL REPRESENTATION OF TRAFFIC MODEL INPUT AND OUTPUT

SUNDAY WESTBOUND DIRECTION

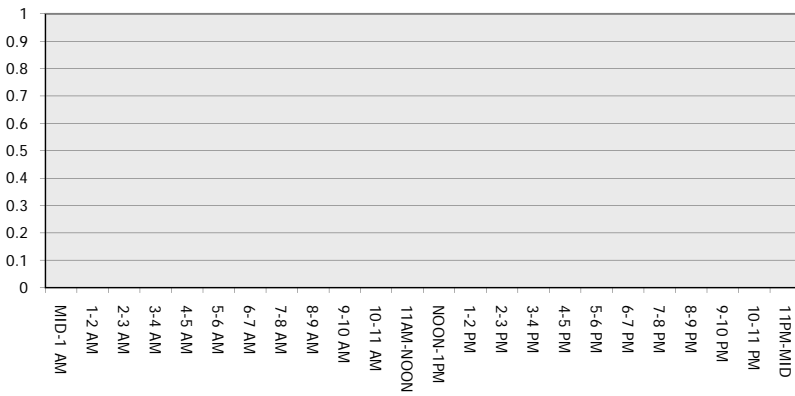
Main Route - Traffic Demand (Vehicles Per Hour)



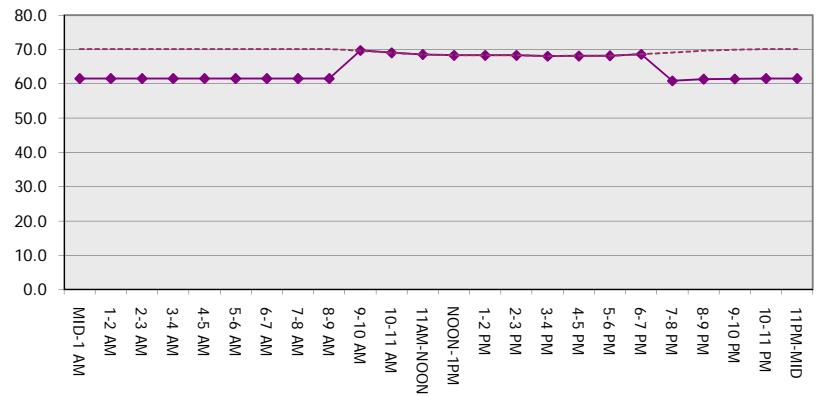
Main Route Average Delay Per Vehicle (Minutes)



Main Route - Average Queue Length (Vehicles)



Main Route - Average Speed (MPH)



IH 94: CTH BB/RAWSON AVE TO STH 100/Ryan Rd (MILWAUKEE COUNTY) NIGHTTIME CLOSURE NO DIVERSION ROUTE (MAX QUEUE METHOD)	OCTOBER
	Analyzed for 2009 Construction Season

SUMMARY OF TRAFFIC MODEL OUTPUT

SUNDAY EASTBOUND DIRECTION

TIME OF DAY	FLOWS AND CAPACITY IN VEH/HR							AVERAGE SPEEDS IN MPH		
	MAIN ROUTE		SITE CAPA CITY	FLOW		AV.DEL PER VEH (MINS)	AVERAGE QUEUE (VEH)	MAIN ROUTE		SITE
	DEMAND FLOW	PCT HEAVY		MAIN ROUTE	'DIVER TED'			WITHOUT WORK ZONE	WITH WORK ZONE	
MID-1 AM	867	0.0	3000	867	0	0.36	0	70.2	61.5	49.7
1-2 AM	587	0.0	3000	587	0	0.36	0	70.2	61.5	49.7
2-3 AM	629	0.0	3000	629	0	0.36	0	70.2	61.5	49.7
3-4 AM	395	0.0	3000	395	0	0.36	0	70.2	61.5	49.7
4-5 AM	424	0.0	3000	424	0	0.36	0	70.2	61.5	49.7
5-6 AM	585	0.0	3000	585	0	0.36	0	70.2	61.5	49.7
6-7 AM	868	0.0	3000	868	0	0.36	0	70.2	61.5	49.7
7-8 AM	1099	0.0	3000	1099	0	0.36	0	70.2	61.5	49.7
8-9 AM	1483	0.0	3000	1483	0	0.36	0	70.2	61.5	49.7
9-10 AM	2204	0.0	OFF	2204	0	0.00	0	69.3	69.3	69.3
10-11 AM	2703	0.0	OFF	2703	0	0.00	0	68.7	68.7	68.7
11AM-NOON	2955	0.0	OFF	2955	0	0.00	0	68.4	68.4	68.4
NOON-1PM	3355	0.0	OFF	3355	0	0.00	0	67.9	67.9	67.9
1-2 PM	3507	0.0	OFF	3507	0	0.00	0	67.7	67.7	67.7
2-3 PM	3532	0.0	OFF	3532	0	0.00	0	67.6	67.6	67.6
3-4 PM	3633	0.0	OFF	3633	0	0.00	0	67.3	67.3	67.3
4-5 PM	3581	0.0	OFF	3581	0	0.00	0	67.6	67.6	67.6
5-6 PM	3189	0.0	OFF	3189	0	0.00	0	68.1	68.1	68.1
6-7 PM	2986	0.0	OFF	2986	0	0.00	0	68.3	68.3	68.3
7-8 PM	2500	0.0	3000	2500	0	0.44	0	68.9	59.1	46.2
8-9 PM	1828	0.0	3000	1828	0	0.35	0	69.7	61.4	49.7
9-10 PM	1483	0.0	3000	1483	0	0.36	0	70.2	61.5	49.7
10-11 PM	1063	0.0	3000	1063	0	0.36	0	70.2	61.5	49.7
11PM-MID	817	0.0	3000	817	0	0.36	0	70.2	61.5	49.7

"OFF" INDICATES NO ROAD WORK (ALL LANES OPEN TO TRAFFIC)

----- SITE BREAKDOWN DELAYS -----	
BREAKDOWN DURATION (MINS)	0
RANGE OF QUEUE DELAY - MIN (VEH-H) MAX	0.0
AV BREAKDOWNS PER DAY	0.00
AV QUEUE DELAY/DAY (VEH-H)	0.0
AV TOTAL DELAY/DAY (VEH-H)	0.0

----- SITE ACCIDENT DELAYS -----	
BREAKDOWN DURATION (MINS)	0
RANGE OF QUEUE DELAY - MIN (VEH-H) MAX	0
AV BREAKDOWNS PER DAY	0
AV QUEUE DELAY/DAY (VEH-H)	0
AV TOTAL DELAY/DAY (VEH-H)	0

AVERAGE ACCIDENT NUMBERS (PIA/DAY)	
MAIN ROUTE WITHOUT WORKS	0.0221
MAIN ROUTE WITH WORKS	0.0211
'DIVERSION'	0.0000

PIA: Personal Injury Accidents

ECONOMIC IMPACT ON ROAD USERS	
ROAD USER COSTS PER DAY	\$1,231
CONGESTED HOURS PER DAY*	0

*Delays Exceeding User-Specified Maximum

IH 94: CTH BB/RAWSON AVE TO STH 100/RYAN RD (MILWAUKEE COUNTY)
NIGHTTIME CLOSURE
NO DIVERSION ROUTE (MAX QUEUE METHOD)

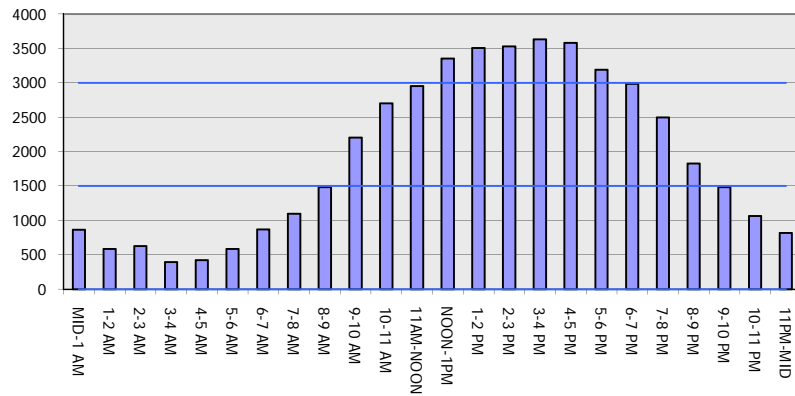
OCTOBER

Analyzed for 2009
 Construction Season

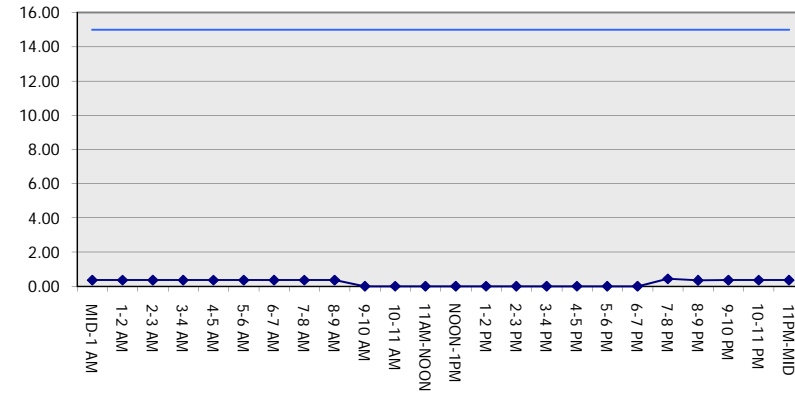
GRAPHICAL REPRESENTATION OF TRAFFIC MODEL INPUT AND OUTPUT

SUNDAY EASTBOUND DIRECTION

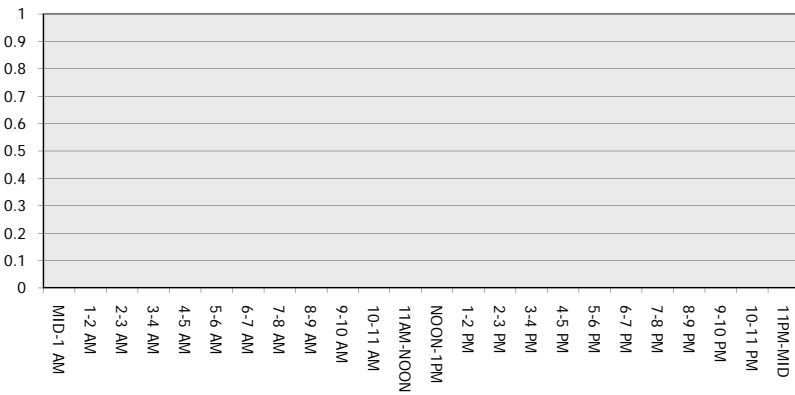
Main Route - Traffic Demand (Vehicles Per Hour)



Main Route Average Delay Per Vehicle (Minutes)



Main Route - Average Queue Length (Vehicles)



Main Route - Average Speed (MPH)

