

IH 94: CTH BB/RAWSON AVE TO STH 100/Ryan RD (MILWAUKEE COUNTY) NIGHTTIME CLOSURE NO DIVERSION ROUTE (MAX QUEUE METHOD)	OCTOBER
	Analyzed for 2009 Construction Season

SUMMARY OF TRAFFIC MODEL OUTPUT

SATURDAY WESTBOUND DIRECTION

TIME OF DAY	FLOWS AND CAPACITY IN VEH/HR						AVERAGE SPEEDS IN MPH			
	MAIN ROUTE		SITE CAPA CITY	FLOW		AV.DEL PER VEH (MINS)	AVERAGE QUEUE (VEH)	MAIN ROUTE		SITE
	DEMAND FLOW	PCT HEAVY		MAIN ROUTE	'DIVER TED'			WITHOUT WORK ZONE	WITH WORK ZONE	
MID-1 AM	869	0.0	3000	869	0	0.36	0	70.2	61.5	49.7
1-2 AM	489	0.0	3000	489	0	0.36	0	70.2	61.5	49.7
2-3 AM	431	0.0	3000	431	0	0.36	0	70.2	61.5	49.7
3-4 AM	395	0.0	3000	395	0	0.36	0	70.2	61.5	49.7
4-5 AM	493	0.0	3000	493	0	0.36	0	70.2	61.5	49.7
5-6 AM	817	0.0	3000	817	0	0.36	0	70.2	61.5	49.7
6-7 AM	1292	0.0	3000	1292	0	0.36	0	70.2	61.5	49.7
7-8 AM	1779	0.0	3000	1779	0	0.35	0	69.8	61.4	49.7
8-9 AM	2340	0.0	OFF	2340	0	0.00	0	69.1	69.1	69.1
9-10 AM	2643	0.0	OFF	2643	0	0.00	0	68.7	68.7	68.7
10-11 AM	2894	0.0	OFF	2894	0	0.00	0	68.4	68.4	68.4
11AM-NOON	3128	0.0	OFF	3128	0	0.00	0	68.1	68.1	68.1
NOON-1PM	3245	0.0	OFF	3245	0	0.00	0	68.0	68.0	68.0
1-2 PM	3113	0.0	OFF	3113	0	0.00	0	68.2	68.2	68.2
2-3 PM	3168	0.0	OFF	3168	0	0.00	0	68.1	68.1	68.1
3-4 PM	3263	0.0	OFF	3263	0	0.00	0	68.0	68.0	68.0
4-5 PM	3228	0.0	OFF	3228	0	0.00	0	68.0	68.0	68.0
5-6 PM	3277	0.0	OFF	3277	0	0.00	0	67.9	67.9	67.9
6-7 PM	2932	0.0	2999	2932	0	0.82	6	68.4	52.1	38.3
7-8 PM	2382	0.0	3000	2382	0	0.36	0	69.1	60.7	49.1
8-9 PM	1915	0.0	3000	1915	0	0.35	0	69.7	61.3	49.7
9-10 PM	1826	0.0	3000	1826	0	0.35	0	69.7	61.4	49.7
10-11 PM	1645	0.0	3000	1645	0	0.36	0	70.0	61.5	49.7
11PM-MID	1337	0.0	3000	1337	0	0.36	0	70.2	61.5	49.7

"OFF" INDICATES NO ROAD WORK (ALL LANES OPEN TO TRAFFIC)

----- SITE BREAKDOWN DELAYS -----	
BREAKDOWN DURATION (MINS)	0
RANGE OF QUEUE DELAY - MIN	0.0
(VEH-H) MAX	0.0
AV BREAKDOWNS PER DAY	0.00
AV QUEUE DELAY/DAY (VEH-H)	0.0
AV TOTAL DELAY/DAY (VEH-H)	0.0

----- SITE ACCIDENT DELAYS -----	
BREAKDOWN DURATION (MINS)	0
RANGE OF QUEUE DELAY - MIN	0
(VEH-H) MAX	0
AV BREAKDOWNS PER DAY	0
AV QUEUE DELAY/DAY (VEH-H)	0
AV TOTAL DELAY/DAY (VEH-H)	0

AVERAGE ACCIDENT NUMBERS (PIA/DAY)	
MAIN ROUTE WITHOUT WORKS	0.0234
MAIN ROUTE WITH WORKS	0.0221
'DIVERSION'	0.0000
PIA: Personal Injury Accidents	
IMPACTS ON ROAD USERS	
ROAD USER COSTS PER DAY	\$1,825
CONGESTED HOURS PER DAY*	0

*Delays Exceeding User-Specified Maximum

IH 94: CTH BB/RAWSON AVE TO STH 100/RYAN RD (MILWAUKEE COUNTY)
NIGHTTIME CLOSURE
NO DIVERSION ROUTE (MAX QUEUE METHOD)

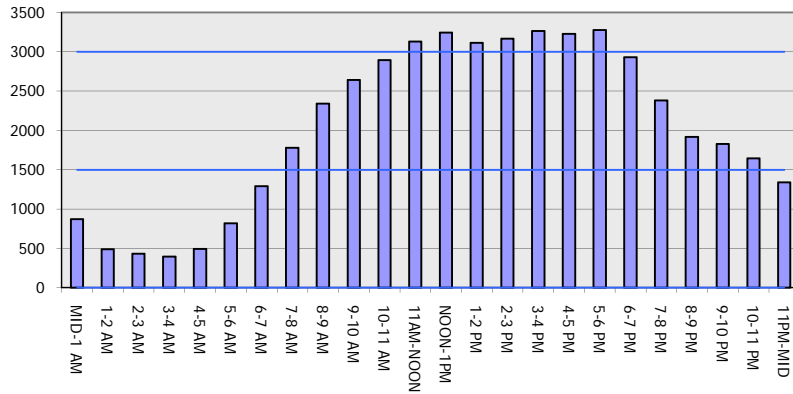
OCTOBER

Analyzed for 2009
 Construction Season

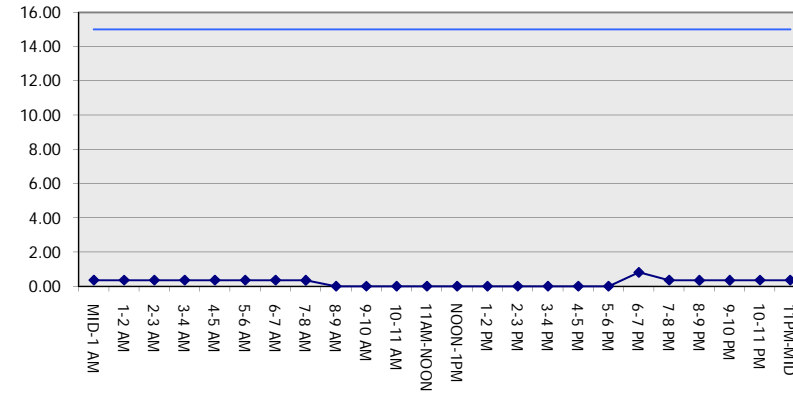
GRAPHICAL REPRESENTATION OF TRAFFIC MODEL INPUT AND OUTPUT

SATURDAY WESTBOUND DIRECTION

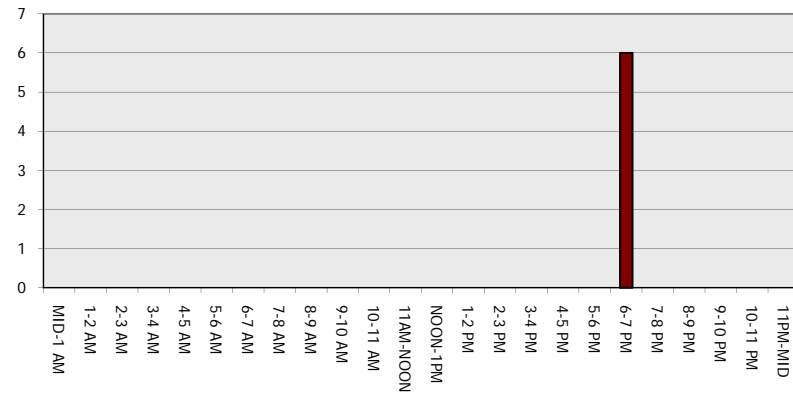
Main Route - Traffic Demand (Vehicles Per Hour)



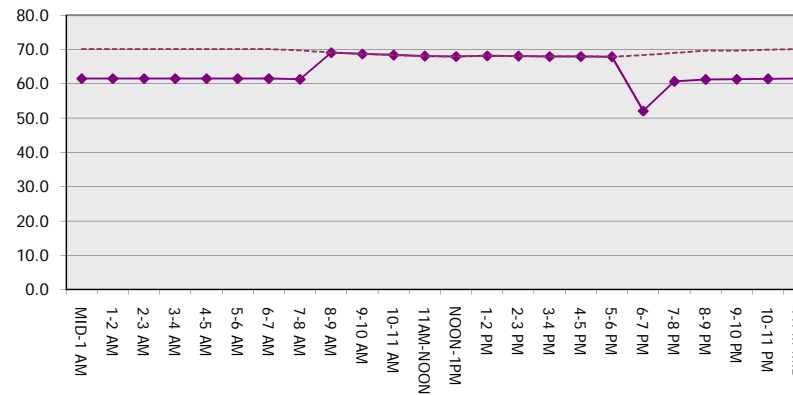
Main Route Average Delay Per Vehicle (Minutes)



Main Route - Average Queue Length (Vehicles)



Main Route - Average Speed (MPH)



IH 94: CTH BB/RAWSON AVE TO STH 100/Ryan Rd (MILWAUKEE COUNTY) NIGHTTIME CLOSURE NO DIVERSION ROUTE (MAX QUEUE METHOD)	OCTOBER
	Analyzed for 2009 Construction Season

SUMMARY OF TRAFFIC MODEL OUTPUT

SATURDAY EASTBOUND DIRECTION

TIME OF DAY	FLOWS AND CAPACITY IN VEH/HR							AVERAGE SPEEDS IN MPH		
	MAIN ROUTE		SITE CAPA CITY	FLOW		AV.DEL PER VEH (MINS)	AVERAGE QUEUE (VEH)	MAIN ROUTE		SITE
	DEMAND FLOW	PCT HEAVY		MAIN ROUTE	'DIVER TED'			WITHOUT WORK ZONE	WITH WORK ZONE	
MID-1 AM	830	0.0	3000	830	0	0.36	0	70.2	61.5	49.7
1-2 AM	552	0.0	3000	552	0	0.36	0	70.2	61.5	49.7
2-3 AM	523	0.0	3000	523	0	0.36	0	70.2	61.5	49.7
3-4 AM	483	0.0	3000	483	0	0.36	0	70.2	61.5	49.7
4-5 AM	607	0.0	3000	607	0	0.36	0	70.2	61.5	49.7
5-6 AM	1034	0.0	3000	1034	0	0.36	0	70.2	61.5	49.7
6-7 AM	1409	0.0	3000	1409	0	0.36	0	70.2	61.5	49.7
7-8 AM	1632	0.0	3000	1632	0	0.36	0	70.0	61.5	49.7
8-9 AM	2149	0.0	OFF	2149	0	0.00	0	69.4	69.4	69.4
9-10 AM	2700	0.0	OFF	2700	0	0.00	0	68.7	68.7	68.7
10-11 AM	2934	0.0	OFF	2934	0	0.00	0	68.4	68.4	68.4
11AM-NOON	3256	0.0	OFF	3256	0	0.00	0	68.0	68.0	68.0
NOON-1PM	3393	0.0	OFF	3393	0	0.00	0	67.8	67.8	67.8
1-2 PM	3045	0.0	OFF	3045	0	0.00	0	68.2	68.2	68.2
2-3 PM	3289	0.0	OFF	3289	0	0.00	0	67.9	67.9	67.9
3-4 PM	3306	0.0	OFF	3306	0	0.00	0	67.9	67.9	67.9
4-5 PM	3086	0.0	OFF	3086	0	0.00	0	68.2	68.2	68.2
5-6 PM	2941	0.0	OFF	2941	0	0.00	0	68.4	68.4	68.4
6-7 PM	2535	0.0	3000	2535	0	0.46	0	68.9	58.6	45.4
7-8 PM	2106	0.0	3000	2106	0	0.35	0	69.4	61.2	49.7
8-9 PM	1778	0.0	3000	1778	0	0.35	0	69.8	61.4	49.7
9-10 PM	1687	0.0	3000	1687	0	0.36	0	69.9	61.4	49.7
10-11 PM	1608	0.0	3000	1608	0	0.36	0	70.0	61.5	49.7
11PM-MID	1209	0.0	3000	1209	0	0.36	0	70.2	61.5	49.7

"OFF" INDICATES NO ROAD WORK (ALL LANES OPEN TO TRAFFIC)

----- SITE BREAKDOWN DELAYS -----	
BREAKDOWN DURATION (MINS)	0
RANGE OF QUEUE DELAY - MIN	0.0
(VEH-H) MAX	0.0
AV BREAKDOWNS PER DAY	0.00
AV QUEUE DELAY/DAY (VEH-H)	0.0
AV TOTAL DELAY/DAY (VEH-H)	0.0

----- SITE ACCIDENT DELAYS -----	
BREAKDOWN DURATION (MINS)	0
RANGE OF QUEUE DELAY - MIN	0
(VEH-H) MAX	0
AV BREAKDOWNS PER DAY	0
AV QUEUE DELAY/DAY (VEH-H)	0
AV TOTAL DELAY/DAY (VEH-H)	0

AVERAGE ACCIDENT NUMBERS (PIA/DAY)	
MAIN ROUTE WITHOUT WORKS	0.0230
MAIN ROUTE WITH WORKS	0.0218
'DIVERSION'	0.0000

PIA: Personal Injury Accidents

ECONOMIC IMPACT ON ROAD USERS	
ROAD USER COSTS PER DAY	\$1,528
CONGESTED HOURS PER DAY*	0

*Delays Exceeding User-Specified Maximum

IH 94: CTH BB/RAWSON AVE TO STH 100/RYAN RD (MILWAUKEE COUNTY)
NIGHTTIME CLOSURE
NO DIVERSION ROUTE (MAX QUEUE METHOD)

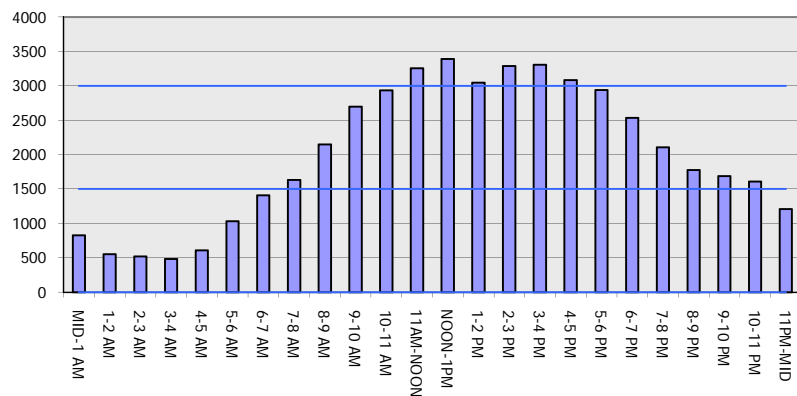
OCTOBER

Analyzed for 2009
 Construction Season

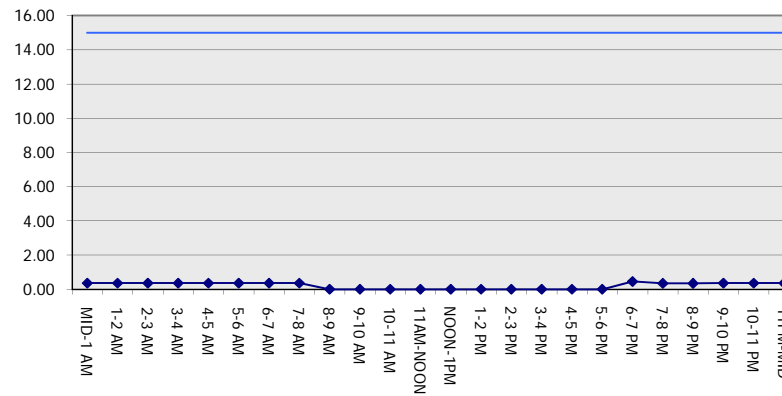
GRAPHICAL REPRESENTATION OF TRAFFIC MODEL INPUT AND OUTPUT

SATURDAY EASTBOUND DIRECTION

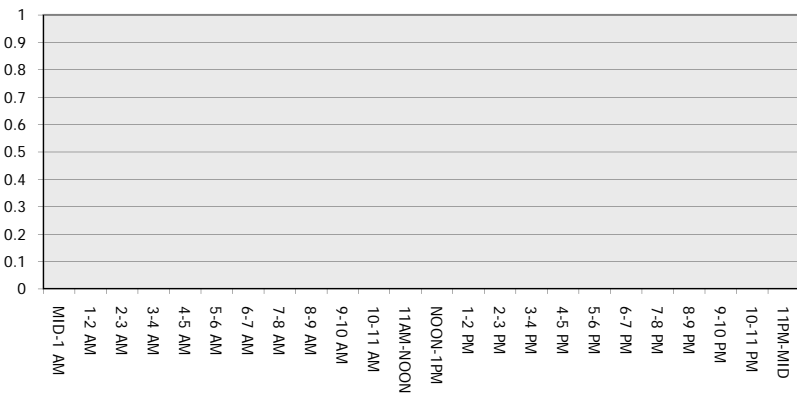
Main Route - Traffic Demand (Vehicles Per Hour)



Main Route Average Delay Per Vehicle (Minutes)



Main Route - Average Queue Length (Vehicles)



Main Route - Average Speed (MPH)

