

IH 94: CTH BB/RAWSON AVE TO STH 100/Ryan RD (MILWAUKEE COUNTY) NIGHTTIME 2 LANE CLOSURE NO DIVERSION ROUTE (MAX QUEUE METHOD)	OCTOBER
	Analyzed for 2009 Construction Season

SUMMARY OF TRAFFIC MODEL OUTPUT

MON-THUR WESTBOUND DIRECTION

TIME OF DAY	FLOWS AND CAPACITY IN VEH/HR						AVERAGE SPEEDS IN MPH				
	MAIN ROUTE		SITE CAPA CITY	FLOW		AV.DEL PER VEH (MINS)	AVERAGE QUEUE (VEH)	MAIN ROUTE		SITE	
	DEMAND FLOW	PCT HEAVY		MAIN ROUTE	'DIVER TED'			WITHOUT WORK ZONE	WITH WORK ZONE		
MID-1 AM	596	0.0	1500	596	0	0.44	0	70.2	59.8	46.5	
1-2 AM	357	0.0	1500	357	0	0.41	0	70.2	60.4	47.6	
2-3 AM	345	0.0	1500	345	0	0.41	0	70.2	60.4	47.6	
3-4 AM	397	0.0	1500	397	0	0.42	0	70.2	60.3	47.4	
4-5 AM	667	0.0	1500	667	0	0.45	0	70.2	59.7	46.2	
5-6 AM	1812	0.0	OFF	1812	0	0.00	0	69.8	69.8	69.8	
6-7 AM	3543	0.0	OFF	3543	0	0.00	0	67.6	67.6	67.6	
7-8 AM	3961	0.0	OFF	3961	0	0.00	0	65.1	65.1	65.1	
8-9 AM	3290	0.0	OFF	3290	0	0.00	0	67.9	67.9	67.9	
9-10 AM	2739	0.0	OFF	2739	0	0.00	0	68.6	68.6	68.6	
10-11 AM	2647	0.0	OFF	2647	0	0.00	0	68.7	68.7	68.7	
11AM-NOON	2666	0.0	OFF	2666	0	0.00	0	68.7	68.7	68.7	
NOON-1PM	2757	0.0	OFF	2757	0	0.00	0	68.6	68.6	68.6	
1-2 PM	2861	0.0	OFF	2861	0	0.00	0	68.5	68.5	68.5	
2-3 PM	3192	0.0	OFF	3192	0	0.00	0	68.1	68.1	68.1	
3-4 PM	3575	0.0	OFF	3575	0	0.00	0	67.6	67.6	67.6	
4-5 PM	3388	0.0	OFF	3388	0	0.00	0	67.8	67.8	67.8	
5-6 PM	3266	0.0	OFF	3266	0	0.00	0	68.0	68.0	68.0	
6-7 PM	2757	0.0	OFF	2757	0	0.00	0	68.6	68.6	68.6	
7-8 PM	2021	0.0	1499	1887	134	10.26+	275	69.6	14.0	32.5	
8-9 PM	1657	0.0	1499	1500	157	16.30+	399	70.0	9.6	32.5	
9-10 PM	1626	0.0	1500	1506	120	16.27+	399	70.0	9.6	32.5	
10-11 PM	1281	0.0	1499	1281	0	12.27	305	70.2	12.1	32.8	
11PM-MID	904	0.0	1500	904	0	1.09	29	70.2	49.2	44.8	

"OFF" INDICATES NO ROAD WORK (ALL LANES OPEN TO TRAFFIC)

+ INDICATES QUEUEING EXCEEDS USER-SPECIFIED MAXIMUM LIMIT

----- SITE BREAKDOWN DELAYS -----	
BREAKDOWN DURATION (MINS)	0
RANGE OF QUEUE DELAY - MIN (VEH-H) MAX	0.0
AV BREAKDOWNS PER DAY	0.00
AV QUEUE DELAY/DAY (VEH-H)	0.0
AV TOTAL DELAY/DAY (VEH-H)	0.0

----- SITE ACCIDENT DELAYS -----	
BREAKDOWN DURATION (MINS)	0
RANGE OF QUEUE DELAY - MIN (VEH-H) MAX	0
AV BREAKDOWNS PER DAY	0
AV QUEUE DELAY/DAY (VEH-H)	0
AV TOTAL DELAY/DAY (VEH-H)	0

AVERAGE ACCIDENT NUMBERS (PIA/DAY)	
MAIN ROUTE WITHOUT WORKS	0.0250
MAIN ROUTE WITH WORKS	0.0242
'DIVERSION'	0.0005
PIA: Personal Injury Accidents	
IMPACTS ON ROAD USERS	
ROAD USER COSTS PER DAY	\$21,314
CONGESTED HOURS PER DAY*	3

*Delays Exceeding User-Specified Maximum

IH 94: CTH BB/RAWSON AVE TO STH 100/RYAN RD (MILWAUKEE COUNTY)
NIGHTTIME 2 LANE CLOSURE
NO DIVERSION ROUTE (MAX QUEUE METHOD)

OCTOBER

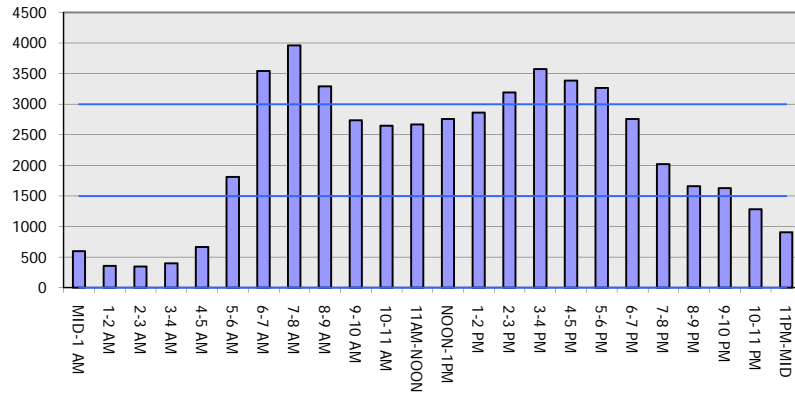
Analyzed for 2009
 Construction Season

GRAPHICAL REPRESENTATION OF TRAFFIC MODEL INPUT AND OUTPUT

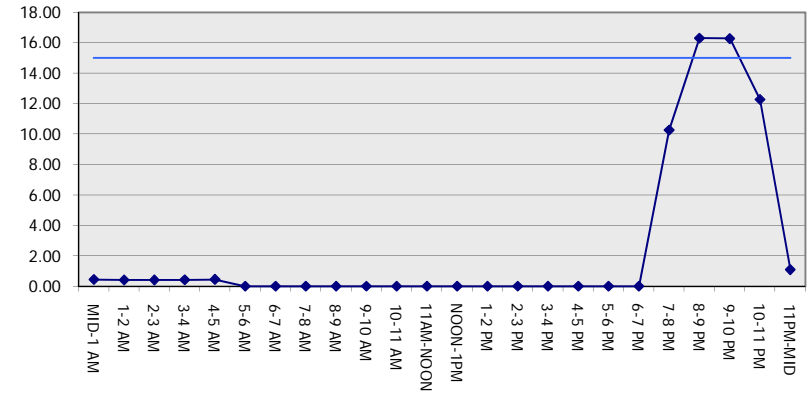
MON-THUR

WESTBOUND DIRECTION

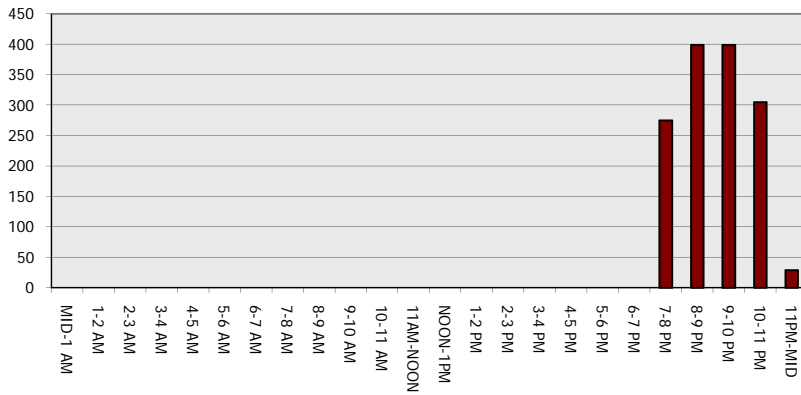
Main Route - Traffic Demand (Vehicles Per Hour)



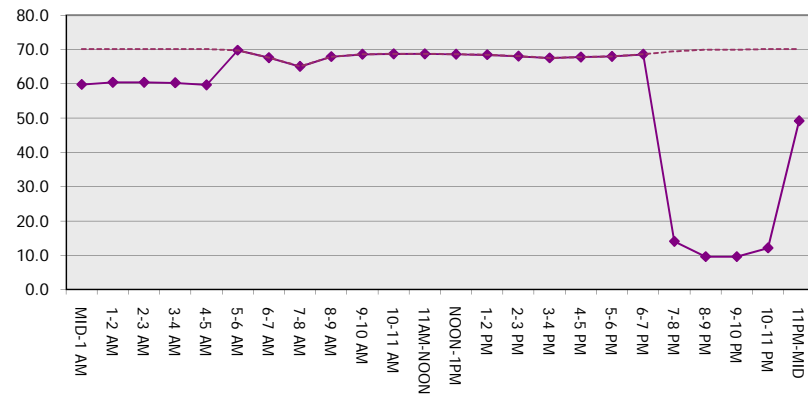
Main Route Average Delay Per Vehicle (Minutes)



Main Route - Average Queue Length (Vehicles)



Main Route - Average Speed (MPH)



IH 94: CTH BB/RAWSON AVE TO STH 100/Ryan RD (MILWAUKEE COUNTY) NIGHTTIME 2 LANE CLOSURE NO DIVERSION ROUTE (MAX QUEUE METHOD)	OCTOBER
	Analyzed for 2009 Construction Season

SUMMARY OF TRAFFIC MODEL OUTPUT	
MON-THUR	EASTBOUND DIRECTION

TIME OF DAY	FLOWS AND CAPACITY IN VEH/HR							AVERAGE SPEEDS IN MPH		
	MAIN ROUTE		SITE CAPA CITY	FLOW		AV.DEL PER VEH (MINS)	AVERAGE QUEUE (VEH)	MAIN ROUTE		SITE
	DEMAND FLOW	PCT HEAVY		MAIN ROUTE	'DIVER TED'			WITHOUT WORK ZONE	WITH WORK ZONE	
MID-1 AM	535	0.0	1500	535	0	0.44	0	70.2	60.0	46.8
1-2 AM	392	0.0	1500	392	0	0.42	0	70.2	60.4	47.4
2-3 AM	383	0.0	1500	383	0	0.42	0	70.2	60.4	47.4
3-4 AM	490	0.0	1500	490	0	0.43	0	70.2	60.1	46.9
4-5 AM	913	0.0	1499	913	0	0.48	0	70.2	59.1	45.1
5-6 AM	1992	0.0	OFF	1992	0	0.00	0	69.6	69.6	69.6
6-7 AM	3388	0.0	OFF	3388	0	0.00	0	67.8	67.8	67.8
7-8 AM	3068	0.0	OFF	3068	0	0.00	0	68.2	68.2	68.2
8-9 AM	2944	0.0	OFF	2944	0	0.00	0	68.4	68.4	68.4
9-10 AM	2621	0.0	OFF	2621	0	0.00	0	68.8	68.8	68.8
10-11 AM	2511	0.0	OFF	2511	0	0.00	0	68.9	68.9	68.9
11AM-NOON	2691	0.0	OFF	2691	0	0.00	0	68.7	68.7	68.7
NOON-1PM	2904	0.0	OFF	2904	0	0.00	0	68.4	68.4	68.4
1-2 PM	3101	0.0	OFF	3101	0	0.00	0	68.2	68.2	68.2
2-3 PM	3616	0.0	OFF	3616	0	0.00	0	67.4	67.4	67.4
3-4 PM	3993	0.0	OFF	3993	0	0.00	0	64.9	64.9	64.9
4-5 PM	4253	0.0	OFF	4253	0	0.00	0	63.1	63.1	63.1
5-6 PM	4286	0.0	OFF	4286	0	0.00	0	62.8	62.8	62.8
6-7 PM	3346	0.0	OFF	3346	0	0.00	0	67.9	67.9	67.9
7-8 PM	2383	0.0	1499	1874	510	12.85+	321	69.1	11.6	34.4
8-9 PM	1931	0.0	1499	1500	431	16.29+	399	69.6	9.6	32.5
9-10 PM	1749	0.0	1500	1509	240	16.25+	398	69.9	9.6	32.5
10-11 PM	1330	0.0	1500	1330	0	13.17	324	70.2	11.4	32.5
11PM-MID	912	0.0	1500	912	0	1.44	46	70.2	45.0	44.0

"OFF" INDICATES NO ROAD WORK (ALL LANES OPEN TO TRAFFIC)

+ INDICATES QUEUEING EXCEEDS USER-SPECIFIED MAXIMUM LIMIT

----- SITE BREAKDOWN DELAYS -----	
BREAKDOWN DURATION (MINS)	0
RANGE OF QUEUE DELAY - MIN (VEH-H) MAX	0.0
AV BREAKDOWNS PER DAY	0.00
AV QUEUE DELAY/DAY (VEH-H)	0.0
AV TOTAL DELAY/DAY (VEH-H)	0.0

----- SITE ACCIDENT DELAYS -----	
BREAKDOWN DURATION (MINS)	0
RANGE OF QUEUE DELAY - MIN (VEH-H) MAX	0
AV BREAKDOWNS PER DAY	0
AV QUEUE DELAY/DAY (VEH-H)	0
AV TOTAL DELAY/DAY (VEH-H)	0

AVERAGE ACCIDENT NUMBERS (PIA/DAY)	
MAIN ROUTE WITHOUT WORKS	0.0266
MAIN ROUTE WITH WORKS	0.0254
'DIVERSION'	0.0013

PIA: Personal Injury Accidents

ECONOMIC IMPACT ON ROAD USERS	
ROAD USER COSTS PER DAY	\$25,631
CONGESTED HOURS PER DAY*	3

*Delays Exceeding User-Specified Maximum

IH 94: CTH BB/RAWSON AVE TO STH 100/RYAN RD (MILWAUKEE COUNTY)
NIGHTTIME 2 LANE CLOSURE
NO DIVERSION ROUTE (MAX QUEUE METHOD)

OCTOBER

Analyzed for 2009
 Construction Season

GRAPHICAL REPRESENTATION OF TRAFFIC MODEL INPUT AND OUTPUT

MON-THUR EASTBOUND DIRECTION

