

IH 94: CTH BB/RAWSON AVE TO STH 100/RYAN RD (MILWAUKEE COUNTY) NIGHTTIME CLOSURE NO DIVERSION ROUTE (MAX QUEUE METHOD)	OCTOBER
	Analyzed for 2009 Construction Season

SUMMARY OF TRAFFIC MODEL OUTPUT

MON-THUR WESTBOUND DIRECTION

TIME OF DAY	FLOWS AND CAPACITY IN VEH/HR						AVERAGE SPEEDS IN MPH			
	MAIN ROUTE		SITE CAPA CITY	FLOW		AV.DEL PER VEH (MINS)	AVERAGE QUEUE (VEH)	MAIN ROUTE		SITE
	DEMAND FLOW	PCT HEAVY		MAIN ROUTE	'DIVER TED'			WITHOUT WORK ZONE	WITH WORK ZONE	
MID-1 AM	596	0.0	3000	596	0	0.36	0	70.2	61.5	49.7
1-2 AM	357	0.0	3000	357	0	0.36	0	70.2	61.5	49.7
2-3 AM	345	0.0	3000	345	0	0.36	0	70.2	61.5	49.7
3-4 AM	397	0.0	3000	397	0	0.36	0	70.2	61.5	49.7
4-5 AM	667	0.0	3000	667	0	0.36	0	70.2	61.5	49.7
5-6 AM	1812	0.0	OFF	1812	0	0.00	0	69.8	69.8	69.8
6-7 AM	3543	0.0	OFF	3543	0	0.00	0	67.6	67.6	67.6
7-8 AM	3961	0.0	OFF	3961	0	0.00	0	65.1	65.1	65.1
8-9 AM	3290	0.0	OFF	3290	0	0.00	0	67.9	67.9	67.9
9-10 AM	2739	0.0	OFF	2739	0	0.00	0	68.6	68.6	68.6
10-11 AM	2647	0.0	OFF	2647	0	0.00	0	68.7	68.7	68.7
11AM-NOON	2666	0.0	OFF	2666	0	0.00	0	68.7	68.7	68.7
NOON-1PM	2757	0.0	OFF	2757	0	0.00	0	68.6	68.6	68.6
1-2 PM	2861	0.0	OFF	2861	0	0.00	0	68.5	68.5	68.5
2-3 PM	3192	0.0	OFF	3192	0	0.00	0	68.1	68.1	68.1
3-4 PM	3575	0.0	OFF	3575	0	0.00	0	67.6	67.6	67.6
4-5 PM	3388	0.0	OFF	3388	0	0.00	0	67.8	67.8	67.8
5-6 PM	3266	0.0	OFF	3266	0	0.00	0	68.0	68.0	68.0
6-7 PM	2757	0.0	OFF	2757	0	0.00	0	68.6	68.6	68.6
7-8 PM	2021	0.0	3000	2021	0	0.35	0	69.6	61.2	49.7
8-9 PM	1657	0.0	3000	1657	0	0.36	0	70.0	61.5	49.7
9-10 PM	1626	0.0	3000	1626	0	0.36	0	70.0	61.5	49.7
10-11 PM	1281	0.0	3000	1281	0	0.36	0	70.2	61.5	49.7
11PM-MID	904	0.0	3000	904	0	0.36	0	70.2	61.5	49.7

"OFF" INDICATES NO ROAD WORK (ALL LANES OPEN TO TRAFFIC)

----- SITE BREAKDOWN DELAYS -----	
BREAKDOWN DURATION (MINS)	0
RANGE OF QUEUE DELAY - MIN (VEH-H) MAX	0.0
AV BREAKDOWNS PER DAY	0.00
AV QUEUE DELAY/DAY (VEH-H)	0.0
AV TOTAL DELAY/DAY (VEH-H)	0.0

----- SITE ACCIDENT DELAYS -----	
BREAKDOWN DURATION (MINS)	0
RANGE OF QUEUE DELAY - MIN (VEH-H) MAX	0
AV BREAKDOWNS PER DAY	0
AV QUEUE DELAY/DAY (VEH-H)	0
AV TOTAL DELAY/DAY (VEH-H)	0

AVERAGE ACCIDENT NUMBERS (PIA/DAY)	
MAIN ROUTE WITHOUT WORKS	0.0250
MAIN ROUTE WITH WORKS	0.0243
'DIVERSION'	0.0000
<small>PIA: Personal Injury Accidents</small>	
IMPACTS ON ROAD USERS	
ROAD USER COSTS PER DAY	\$691
CONGESTED HOURS PER DAY*	0

*Delays Exceeding User-Specified Maximum

IH 94: CTH BB/RAWSON AVE TO STH 100/RYAN RD (MILWAUKEE COUNTY)
NIGHTTIME CLOSURE
NO DIVERSION ROUTE (MAX QUEUE METHOD)

OCTOBER

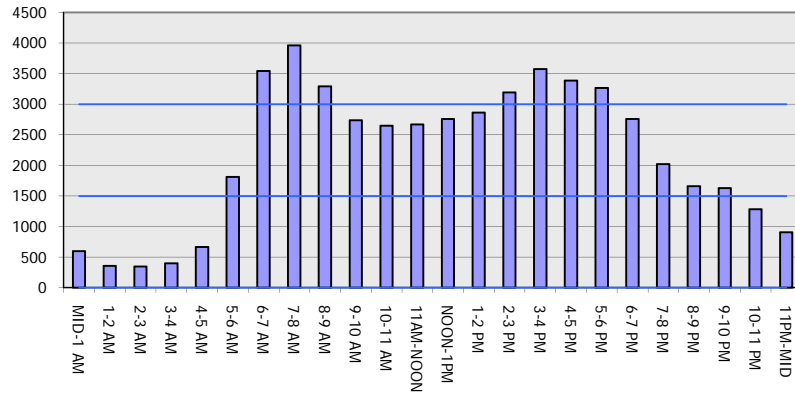
Analyzed for 2009
 Construction Season

GRAPHICAL REPRESENTATION OF TRAFFIC MODEL INPUT AND OUTPUT

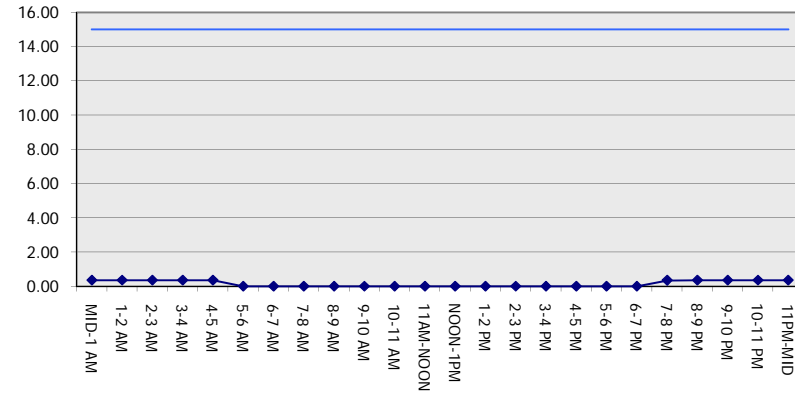
MON-THUR

WESTBOUND DIRECTION

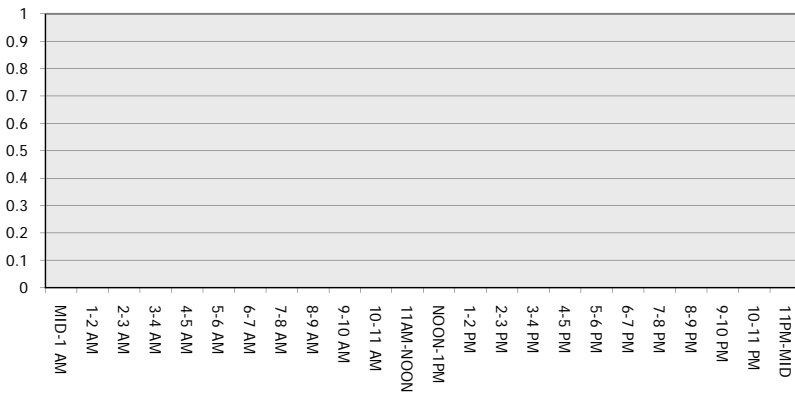
Main Route - Traffic Demand (Vehicles Per Hour)



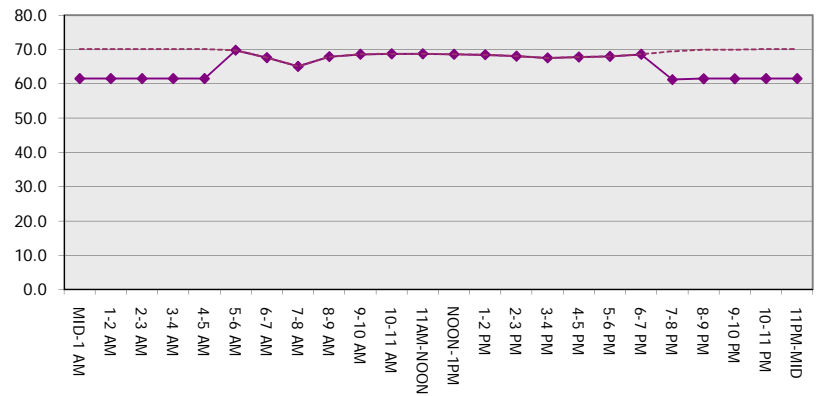
Main Route Average Delay Per Vehicle (Minutes)



Main Route - Average Queue Length (Vehicles)



Main Route - Average Speed (MPH)



IH 94: CTH BB/RAWSON AVE TO STH 100/Ryan RD (MILWAUKEE COUNTY) NIGHTTIME CLOSURE NO DIVERSION ROUTE (MAX QUEUE METHOD)	OCTOBER
	Analyzed for 2009 Construction Season

SUMMARY OF TRAFFIC MODEL OUTPUT

MON-THUR EASTBOUND DIRECTION

TIME OF DAY	FLOWS AND CAPACITY IN VEH/HR							AVERAGE SPEEDS IN MPH		
	MAIN ROUTE		SITE CAPA CITY	FLOW		AV.DEL PER VEH (MINS)	AVERAGE QUEUE (VEH)	MAIN ROUTE		SITE
	DEMAND FLOW	PCT HEAVY		MAIN ROUTE	'DIVER TED'			WITHOUT WORK ZONE	WITH WORK ZONE	
MID-1 AM	535	0.0	3000	535	0	0.36	0	70.2	61.5	49.7
1-2 AM	392	0.0	3000	392	0	0.36	0	70.2	61.5	49.7
2-3 AM	383	0.0	3000	383	0	0.36	0	70.2	61.5	49.7
3-4 AM	490	0.0	3000	490	0	0.36	0	70.2	61.5	49.7
4-5 AM	913	0.0	3000	913	0	0.36	0	70.2	61.5	49.7
5-6 AM	1992	0.0	OFF	1992	0	0.00	0	69.6	69.6	69.6
6-7 AM	3388	0.0	OFF	3388	0	0.00	0	67.8	67.8	67.8
7-8 AM	3068	0.0	OFF	3068	0	0.00	0	68.2	68.2	68.2
8-9 AM	2944	0.0	OFF	2944	0	0.00	0	68.4	68.4	68.4
9-10 AM	2621	0.0	OFF	2621	0	0.00	0	68.8	68.8	68.8
10-11 AM	2511	0.0	OFF	2511	0	0.00	0	68.9	68.9	68.9
11AM-NOON	2691	0.0	OFF	2691	0	0.00	0	68.7	68.7	68.7
NOON-1PM	2904	0.0	OFF	2904	0	0.00	0	68.4	68.4	68.4
1-2 PM	3101	0.0	OFF	3101	0	0.00	0	68.2	68.2	68.2
2-3 PM	3616	0.0	OFF	3616	0	0.00	0	67.4	67.4	67.4
3-4 PM	3993	0.0	OFF	3993	0	0.00	0	64.9	64.9	64.9
4-5 PM	4253	0.0	OFF	4253	0	0.00	0	63.1	63.1	63.1
5-6 PM	4286	0.0	OFF	4286	0	0.00	0	62.8	62.8	62.8
6-7 PM	3346	0.0	OFF	3346	0	0.00	0	67.9	67.9	67.9
7-8 PM	2383	0.0	3000	2383	0	0.36	0	69.1	60.7	49.1
8-9 PM	1931	0.0	3000	1931	0	0.35	0	69.6	61.3	49.7
9-10 PM	1749	0.0	3000	1749	0	0.36	0	69.9	61.4	49.7
10-11 PM	1330	0.0	3000	1330	0	0.36	0	70.2	61.5	49.7
11PM-MID	912	0.0	3000	912	0	0.36	0	70.2	61.5	49.7

"OFF" INDICATES NO ROAD WORK (ALL LANES OPEN TO TRAFFIC)

----- SITE BREAKDOWN DELAYS -----	
BREAKDOWN DURATION (MINS)	0
RANGE OF QUEUE DELAY - MIN (VEH-H) MAX	0.0
AV BREAKDOWNS PER DAY	0.00
AV QUEUE DELAY/DAY (VEH-H)	0.0
AV TOTAL DELAY/DAY (VEH-H)	0.0

----- SITE ACCIDENT DELAYS -----	
BREAKDOWN DURATION (MINS)	0
RANGE OF QUEUE DELAY - MIN (VEH-H) MAX	0
AV BREAKDOWNS PER DAY	0
AV QUEUE DELAY/DAY (VEH-H)	0
AV TOTAL DELAY/DAY (VEH-H)	0

AVERAGE ACCIDENT NUMBERS (PIA/DAY)	
MAIN ROUTE WITHOUT WORKS	0.0266
MAIN ROUTE WITH WORKS	0.0259
'DIVERSION'	0.0000

PIA: Personal Injury Accidents

ECONOMIC IMPACT ON ROAD USERS	
ROAD USER COSTS PER DAY	\$773
CONGESTED HOURS PER DAY*	0

*Delays Exceeding User-Specified Maximum

IH 94: CTH BB/RAWSON AVE TO STH 100/RYAN RD (MILWAUKEE COUNTY)
NIGHTTIME CLOSURE
NO DIVERSION ROUTE (MAX QUEUE METHOD)

OCTOBER

Analyzed for 2009
 Construction Season

GRAPHICAL REPRESENTATION OF TRAFFIC MODEL INPUT AND OUTPUT
MON-THUR EASTBOUND DIRECTION

