

IH 94: CTH BB/RAWSON AVE TO STH 100/RYAN RD (MILWAUKEE COUNTY) NIGHTTIME CLOSURE NO DIVERSION ROUTE (MAX QUEUE METHOD)	OCTOBER
	Analyzed for 2009 Construction Season

SUMMARY OF TRAFFIC MODEL OUTPUT

FRIDAY WESTBOUND DIRECTION

TIME OF DAY	FLOWS AND CAPACITY IN VEH/HR						AVERAGE SPEEDS IN MPH			
	MAIN ROUTE		SITE CAPA CITY	FLOW		AV.DEL PER VEH (MINS)	AVERAGE QUEUE (VEH)	MAIN ROUTE		SITE
	DEMAND FLOW	PCT HEAVY		MAIN ROUTE	'DIVER TED'			WITHOUT WORK ZONE	WITH WORK ZONE	
MID-1 AM	718	0.0	3000	718	0	0.36	0	70.2	61.5	49.7
1-2 AM	460	0.0	3000	460	0	0.36	0	70.2	61.5	49.7
2-3 AM	430	0.0	3000	430	0	0.36	0	70.2	61.5	49.7
3-4 AM	492	0.0	3000	492	0	0.36	0	70.2	61.5	49.7
4-5 AM	676	0.0	3000	676	0	0.36	0	70.2	61.5	49.7
5-6 AM	1852	0.0	OFF	1852	0	0.00	0	69.7	69.7	69.7
6-7 AM	3571	0.0	OFF	3571	0	0.00	0	67.6	67.6	67.6
7-8 AM	3984	0.0	OFF	3984	0	0.00	0	65.0	65.0	65.0
8-9 AM	3355	0.0	OFF	3355	0	0.00	0	67.9	67.9	67.9
9-10 AM	2933	0.0	OFF	2933	0	0.00	0	68.4	68.4	68.4
10-11 AM	3083	0.0	OFF	3083	0	0.00	0	68.2	68.2	68.2
11AM-NOON	3244	0.0	OFF	3244	0	0.00	0	68.0	68.0	68.0
NOON-1PM	3400	0.0	OFF	3400	0	0.00	0	67.8	67.8	67.8
1-2 PM	3423	0.0	OFF	3423	0	0.00	0	67.8	67.8	67.8
2-3 PM	3923	0.0	OFF	3923	0	0.00	0	65.3	65.3	65.3
3-4 PM	4104	0.0	OFF	4104	0	0.00	0	64.1	64.1	64.1
4-5 PM	3875	0.0	OFF	3875	0	0.00	0	65.7	65.7	65.7
5-6 PM	3908	0.0	OFF	3908	0	0.00	0	65.5	65.5	65.5
6-7 PM	3513	0.0	OFF	3513	0	0.00	0	67.7	67.7	67.7
7-8 PM	2958	0.0	2999	2958	0	1.05	19	68.4	48.9	38.1
8-9 PM	2359	0.0	3000	2359	0	0.35	0	69.1	61.0	49.7
9-10 PM	2229	0.0	3000	2229	0	0.35	0	69.2	61.1	49.7
10-11 PM	1771	0.0	3000	1771	0	0.36	0	69.9	61.4	49.7
11PM-MID	1350	0.0	3000	1350	0	0.36	0	70.2	61.5	49.7

"OFF" INDICATES NO ROAD WORK (ALL LANES OPEN TO TRAFFIC)

----- SITE BREAKDOWN DELAYS -----	
BREAKDOWN DURATION (MINS)	0
RANGE OF QUEUE DELAY - MIN	0.0
(VEH-H) MAX	0.0
AV BREAKDOWNS PER DAY	0.00
AV QUEUE DELAY/DAY (VEH-H)	0.0
AV TOTAL DELAY/DAY (VEH-H)	0.0

----- SITE ACCIDENT DELAYS -----	
BREAKDOWN DURATION (MINS)	0
RANGE OF QUEUE DELAY - MIN	0
(VEH-H) MAX	0
AV BREAKDOWNS PER DAY	0
AV QUEUE DELAY/DAY (VEH-H)	0
AV TOTAL DELAY/DAY (VEH-H)	0

AVERAGE ACCIDENT NUMBERS (PIA/DAY)	
MAIN ROUTE WITHOUT WORKS	0.0294
MAIN ROUTE WITH WORKS	0.0285
'DIVERSION'	0.0000
<small>PIA: Personal Injury Accidents</small>	
IMPACTS ON ROAD USERS	
ROAD USER COSTS PER DAY	\$1,416
CONGESTED HOURS PER DAY*	0

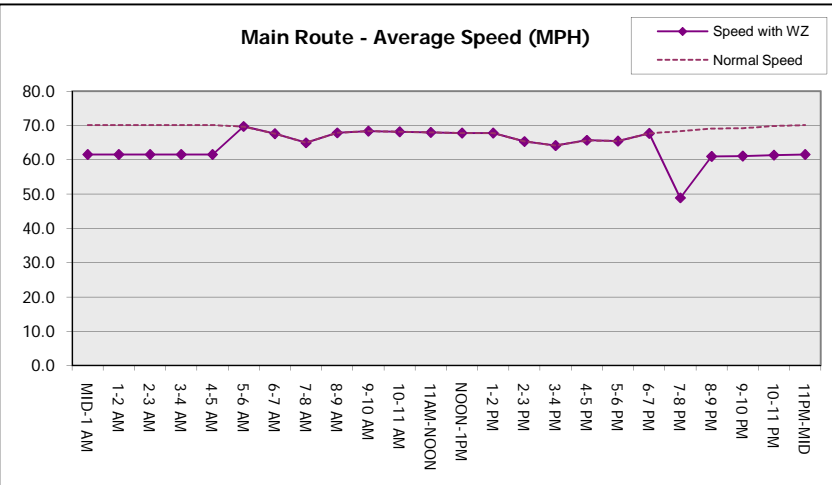
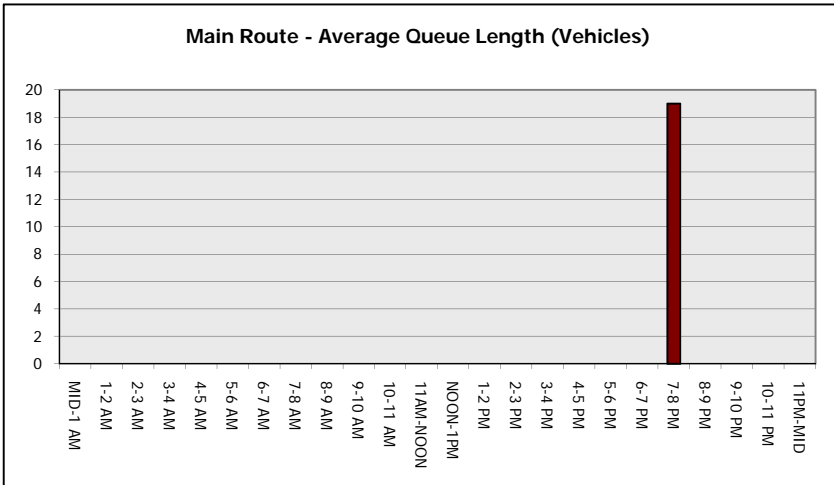
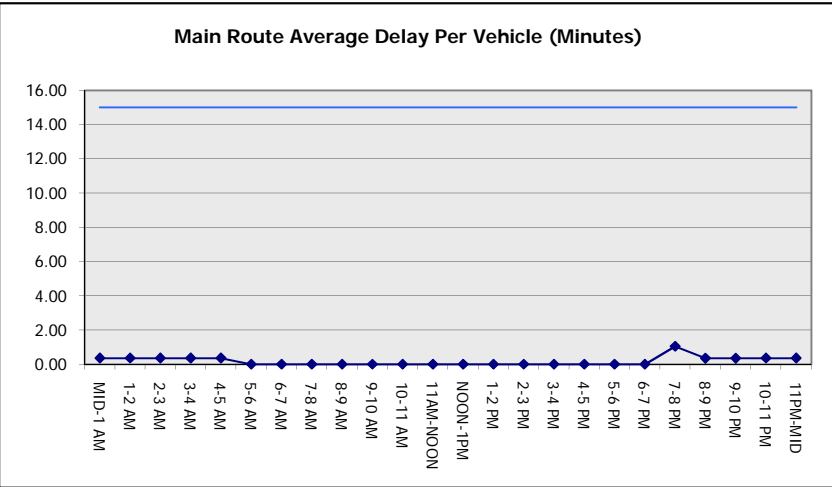
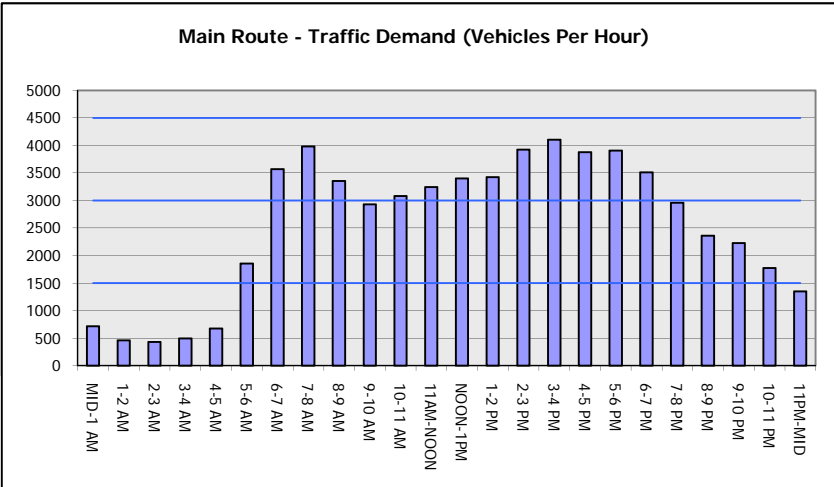
*Delays Exceeding User-Specified Maximum

IH 94: CTH BB/RAWSON AVE TO STH 100/RYAN RD (MILWAUKEE COUNTY)
NIGHTTIME CLOSURE
NO DIVERSION ROUTE (MAX QUEUE METHOD)

OCTOBER
 Analyzed for 2009
 Construction Season

GRAPHICAL REPRESENTATION OF TRAFFIC MODEL INPUT AND OUTPUT

FRIDAY WESTBOUND DIRECTION



IH 94: CTH BB/RAWSON AVE TO STH 100/Ryan RD (MILWAUKEE COUNTY) NIGHTTIME CLOSURE NO DIVERSION ROUTE (MAX QUEUE METHOD)	OCTOBER
	Analyzed for 2009 Construction Season

SUMMARY OF TRAFFIC MODEL OUTPUT

FRIDAY EASTBOUND DIRECTION

TIME OF DAY	FLOWS AND CAPACITY IN VEH/HR							AVERAGE SPEEDS IN MPH		
	MAIN ROUTE		SITE CAPA CITY	FLOW		AV.DEL PER VEH (MINS)	AVERAGE QUEUE (VEH)	MAIN ROUTE		SITE
	DEMAND FLOW	PCT HEAVY		MAIN ROUTE	'DIVER TED'			WITHOUT WORK ZONE	WITH WORK ZONE	
MID-1 AM	626	0.0	3000	626	0	0.36	0	70.2	61.5	49.7
1-2 AM	460	0.0	3000	460	0	0.36	0	70.2	61.5	49.7
2-3 AM	446	0.0	3000	446	0	0.36	0	70.2	61.5	49.7
3-4 AM	585	0.0	3000	585	0	0.36	0	70.2	61.5	49.7
4-5 AM	963	0.0	3000	963	0	0.36	0	70.2	61.5	49.7
5-6 AM	1928	0.0	OFF	1928	0	0.00	0	69.6	69.6	69.6
6-7 AM	3254	0.0	OFF	3254	0	0.00	0	68.0	68.0	68.0
7-8 AM	3218	0.0	OFF	3218	0	0.00	0	68.1	68.1	68.1
8-9 AM	2844	0.0	OFF	2844	0	0.00	0	68.5	68.5	68.5
9-10 AM	2702	0.0	OFF	2702	0	0.00	0	68.7	68.7	68.7
10-11 AM	2767	0.0	OFF	2767	0	0.00	0	68.6	68.6	68.6
11AM-NOON	2982	0.0	OFF	2982	0	0.00	0	68.3	68.3	68.3
NOON-1PM	3254	0.0	OFF	3254	0	0.00	0	68.0	68.0	68.0
1-2 PM	3477	0.0	OFF	3477	0	0.00	0	67.7	67.7	67.7
2-3 PM	3983	0.0	OFF	3983	0	0.00	0	65.0	65.0	65.0
3-4 PM	4222	0.0	OFF	4222	0	0.00	0	63.3	63.3	63.3
4-5 PM	4535	0.0	OFF	4535	0	0.00	0	61.2	61.2	61.2
5-6 PM	4435	0.0	OFF	4435	0	0.00	0	61.9	61.9	61.9
6-7 PM	3494	0.0	OFF	3494	0	0.00	0	67.7	67.7	67.7
7-8 PM	2625	0.0	3000	2625	0	0.52	0	68.8	57.4	43.5
8-9 PM	2044	0.0	3000	2044	0	0.35	0	69.5	61.2	49.7
9-10 PM	1984	0.0	3000	1984	0	0.35	0	69.6	61.2	49.7
10-11 PM	1644	0.0	3000	1644	0	0.36	0	70.0	61.5	49.7
11PM-MID	1204	0.0	3000	1204	0	0.36	0	70.2	61.5	49.7

"OFF" INDICATES NO ROAD WORK (ALL LANES OPEN TO TRAFFIC)

----- SITE BREAKDOWN DELAYS -----	
BREAKDOWN DURATION (MINS)	0
RANGE OF QUEUE DELAY - MIN	0.0
(VEH-H) MAX	0.0
AV BREAKDOWNS PER DAY	0.00
AV QUEUE DELAY/DAY (VEH-H)	0.0
AV TOTAL DELAY/DAY (VEH-H)	0.0

----- SITE ACCIDENT DELAYS -----	
BREAKDOWN DURATION (MINS)	0
RANGE OF QUEUE DELAY - MIN	0
(VEH-H) MAX	0
AV BREAKDOWNS PER DAY	0
AV QUEUE DELAY/DAY (VEH-H)	0
AV TOTAL DELAY/DAY (VEH-H)	0

AVERAGE ACCIDENT NUMBERS (PIA/DAY)	
MAIN ROUTE WITHOUT WORKS	0.0285
MAIN ROUTE WITH WORKS	0.0277
'DIVERSION'	0.0000

PIA: Personal Injury Accidents

ECONOMIC IMPACT ON ROAD USERS	
ROAD USER COSTS PER DAY	\$1,017
CONGESTED HOURS PER DAY*	0

*Delays Exceeding User-Specified Maximum

IH 94: CTH BB/RAWSON AVE TO STH 100/RYAN RD (MILWAUKEE COUNTY)
NIGHTTIME CLOSURE
NO DIVERSION ROUTE (MAX QUEUE METHOD)

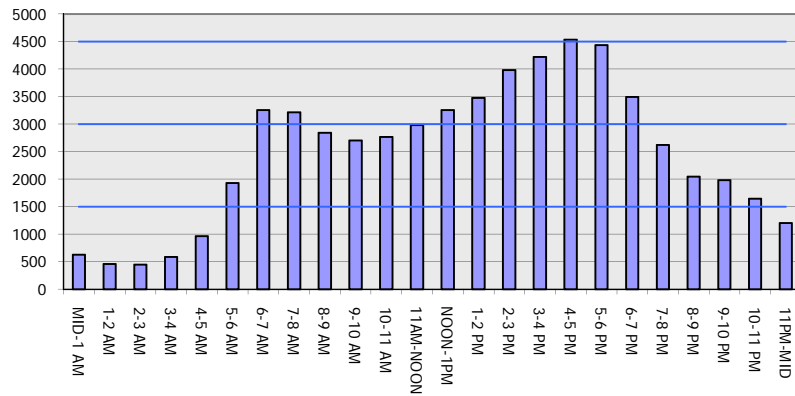
OCTOBER

Analyzed for 2009
 Construction Season

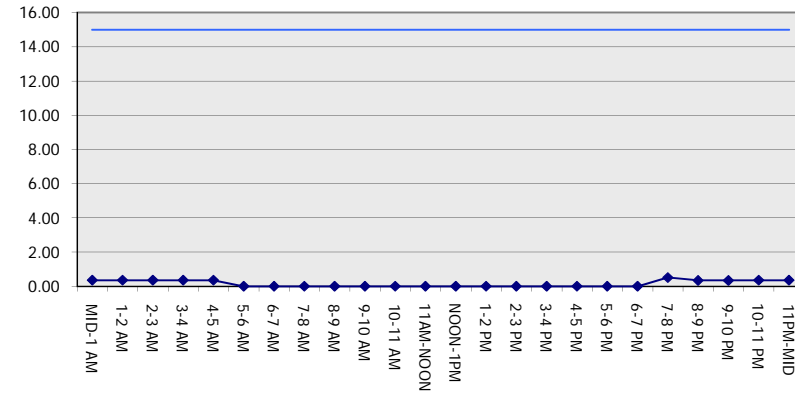
GRAPHICAL REPRESENTATION OF TRAFFIC MODEL INPUT AND OUTPUT

FRIDAY EASTBOUND DIRECTION

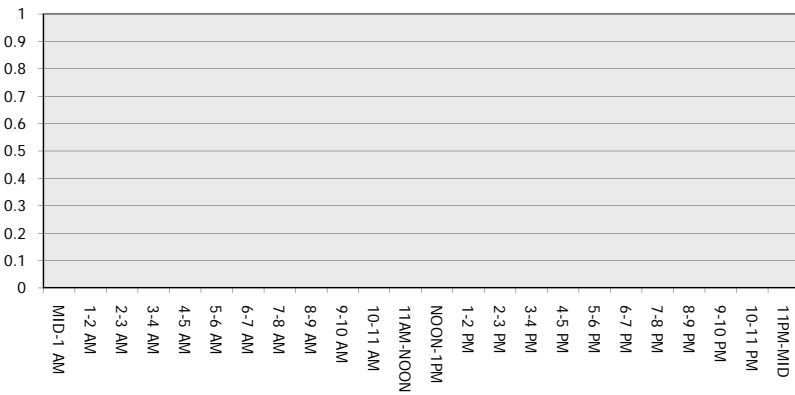
Main Route - Traffic Demand (Vehicles Per Hour)



Main Route Average Delay Per Vehicle (Minutes)



Main Route - Average Queue Length (Vehicles)



Main Route - Average Speed (MPH)

