

IH 94: CTH BB/RAWSON AVE TO STH 100/RYAN RD (MILWAUKEE COUNTY) NIGHTTIME CLOSURE NO DIVERSION ROUTE (MAX QUEUE METHOD)	AUGUST
	Analyzed for 2009 Construction Season

SUMMARY OF TRAFFIC MODEL OUTPUT

SUNDAY WESTBOUND DIRECTION

TIME OF DAY	FLOWS AND CAPACITY IN VEH/HR						AVERAGE SPEEDS IN MPH			
	MAIN ROUTE		SITE CAPA CITY	FLOW		AV.DEL PER VEH (MINS)	AVERAGE QUEUE (VEH)	MAIN ROUTE		SITE
	DEMAND FLOW	PCT HEAVY		MAIN ROUTE	'DIVER TED'			WITHOUT WORK ZONE	WITH WORK ZONE	
MID-1 AM	914	0.0	3000	914	0	0.36	0	70.2	61.5	49.7
1-2 AM	516	0.0	3000	516	0	0.36	0	70.2	61.5	49.7
2-3 AM	353	0.0	3000	353	0	0.36	0	70.2	61.5	49.7
3-4 AM	256	0.0	3000	256	0	0.36	0	70.2	61.5	49.7
4-5 AM	282	0.0	3000	282	0	0.36	0	70.2	61.5	49.7
5-6 AM	449	0.0	3000	449	0	0.36	0	70.2	61.5	49.7
6-7 AM	711	0.0	3000	711	0	0.36	0	70.2	61.5	49.7
7-8 AM	877	0.0	3000	877	0	0.36	0	70.2	61.5	49.7
8-9 AM	1317	0.0	3000	1317	0	0.36	0	70.2	61.5	49.7
9-10 AM	1947	0.0	OFF	1947	0	0.00	0	69.6	69.6	69.6
10-11 AM	2528	0.0	OFF	2528	0	0.00	0	68.9	68.9	68.9
11AM-NOON	2717	0.0	OFF	2717	0	0.00	0	68.7	68.7	68.7
NOON-1PM	2946	0.0	OFF	2946	0	0.00	0	68.4	68.4	68.4
1-2 PM	3021	0.0	OFF	3021	0	0.00	0	68.3	68.3	68.3
2-3 PM	3020	0.0	OFF	3020	0	0.00	0	68.3	68.3	68.3
3-4 PM	3085	0.0	OFF	3085	0	0.00	0	68.2	68.2	68.2
4-5 PM	3113	0.0	OFF	3113	0	0.00	0	68.2	68.2	68.2
5-6 PM	2770	0.0	OFF	2770	0	0.00	0	68.6	68.6	68.6
6-7 PM	2715	0.0	OFF	2715	0	0.00	0	68.7	68.7	68.7
7-8 PM	2410	0.0	3000	2410	0	0.38	0	69.1	60.3	48.4
8-9 PM	2076	0.0	3000	2076	0	0.35	0	69.4	61.2	49.7
9-10 PM	1875	0.0	3000	1875	0	0.35	0	69.7	61.3	49.7
10-11 PM	1410	0.0	3000	1410	0	0.36	0	70.2	61.5	49.7
11PM-MID	928	0.0	3000	928	0	0.36	0	70.2	61.5	49.7

"OFF" INDICATES NO ROAD WORK (ALL LANES OPEN TO TRAFFIC)

----- SITE BREAKDOWN DELAYS -----	
BREAKDOWN DURATION (MINS)	0
RANGE OF QUEUE DELAY - MIN (VEH-H) MAX	0.0
AV BREAKDOWNS PER DAY	0.00
AV QUEUE DELAY/DAY (VEH-H)	0.0
AV TOTAL DELAY/DAY (VEH-H)	0.0

----- SITE ACCIDENT DELAYS -----	
BREAKDOWN DURATION (MINS)	0
RANGE OF QUEUE DELAY - MIN (VEH-H) MAX	0
AV BREAKDOWNS PER DAY	0
AV QUEUE DELAY/DAY (VEH-H)	0
AV TOTAL DELAY/DAY (VEH-H)	0

AVERAGE ACCIDENT NUMBERS (PIA/DAY)	
MAIN ROUTE WITHOUT WORKS	0.0202
MAIN ROUTE WITH WORKS	0.0192
'DIVERSION'	0.0000
PIA: Personal Injury Accidents	
IMPACTS ON ROAD USERS	
ROAD USER COSTS PER DAY	\$1,175
CONGESTED HOURS PER DAY*	0

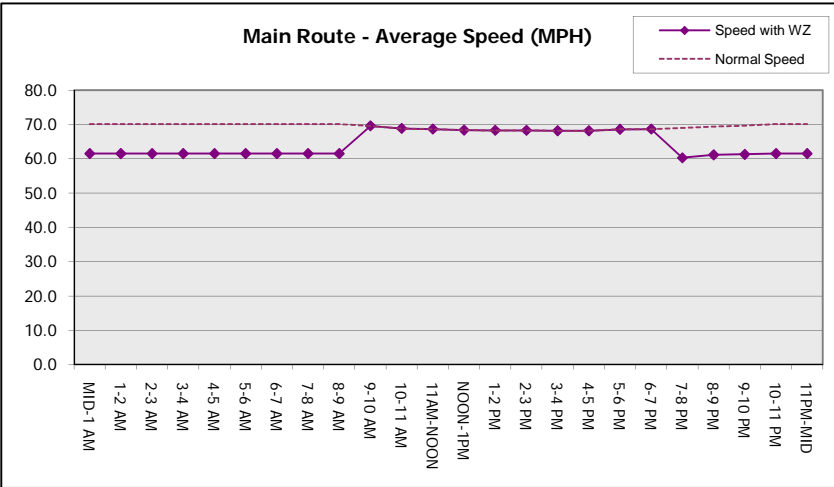
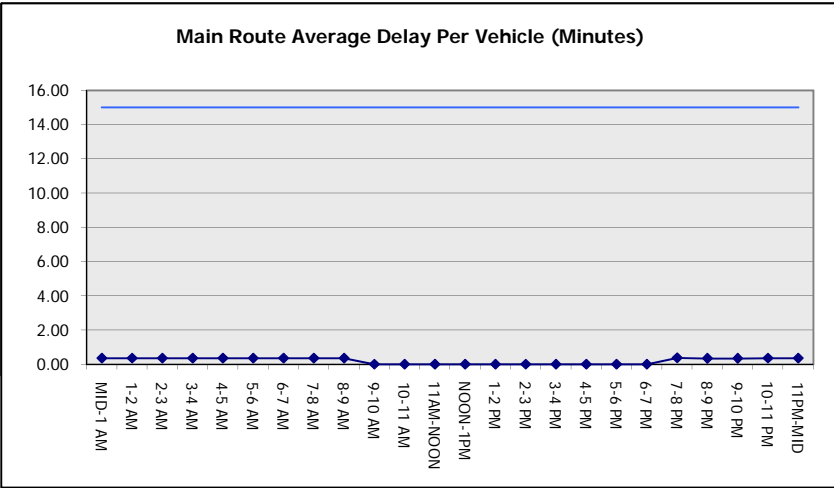
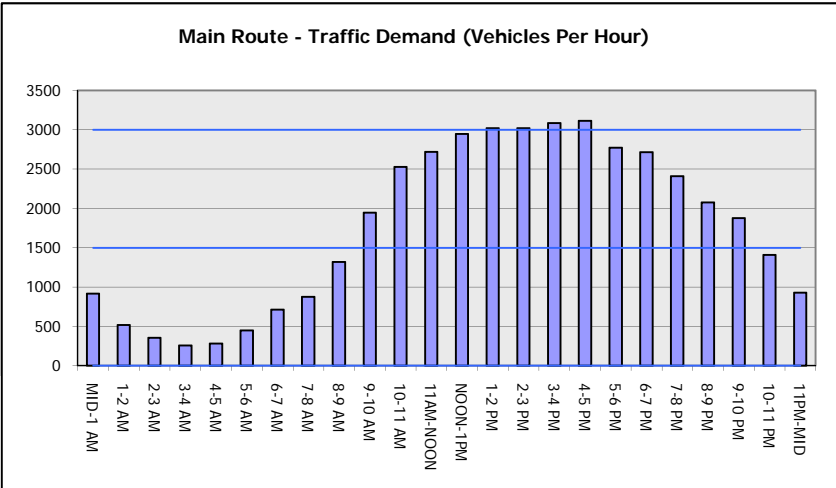
*Delays Exceeding User-Specified Maximum

IH 94: CTH BB/RAWSON AVE TO STH 100/RYAN RD (MILWAUKEE COUNTY)
NIGHTTIME CLOSURE
NO DIVERSION ROUTE (MAX QUEUE METHOD)

AUGUST
 Analyzed for 2009
 Construction Season

GRAPHICAL REPRESENTATION OF TRAFFIC MODEL INPUT AND OUTPUT

SUNDAY WESTBOUND DIRECTION



IH 94: CTH BB/RAWSON AVE TO STH 100/Ryan RD (MILWAUKEE COUNTY) NIGHTTIME CLOSURE NO DIVERSION ROUTE (MAX QUEUE METHOD)	AUGUST
	Analyzed for 2009 Construction Season

SUMMARY OF TRAFFIC MODEL OUTPUT

SUNDAY EASTBOUND DIRECTION

TIME OF DAY	FLOWS AND CAPACITY IN VEH/HR							AVERAGE SPEEDS IN MPH		
	MAIN ROUTE		SITE CAPA CITY	FLOW		AV.DEL PER VEH (MINS)	AVERAGE QUEUE (VEH)	MAIN ROUTE		SITE
	DEMAND FLOW	PCT HEAVY		MAIN ROUTE	'DIVER TED'			WITHOUT WORK ZONE	WITH WORK ZONE	
MID-1 AM	1148	0.0	3000	1148	0	0.36	0	70.2	61.5	49.7
1-2 AM	748	0.0	3000	748	0	0.36	0	70.2	61.5	49.7
2-3 AM	590	0.0	3000	590	0	0.36	0	70.2	61.5	49.7
3-4 AM	403	0.0	3000	403	0	0.36	0	70.2	61.5	49.7
4-5 AM	455	0.0	3000	455	0	0.36	0	70.2	61.5	49.7
5-6 AM	703	0.0	3000	703	0	0.36	0	70.2	61.5	49.7
6-7 AM	854	0.0	3000	854	0	0.36	0	70.2	61.5	49.7
7-8 AM	1048	0.0	3000	1048	0	0.36	0	70.2	61.5	49.7
8-9 AM	1497	0.0	3000	1497	0	0.36	0	70.2	61.5	49.7
9-10 AM	2247	0.0	OFF	2247	0	0.00	0	69.2	69.2	69.2
10-11 AM	2719	0.0	OFF	2719	0	0.00	0	68.7	68.7	68.7
11AM-NOON	3179	0.0	OFF	3179	0	0.00	0	68.1	68.1	68.1
NOON-1PM	3651	0.0	OFF	3651	0	0.00	0	67.2	67.2	67.2
1-2 PM	3788	0.0	OFF	3788	0	0.00	0	66.3	66.3	66.3
2-3 PM	3936	0.0	OFF	3936	0	0.00	0	65.3	65.3	65.3
3-4 PM	3891	0.0	OFF	3891	0	0.00	0	65.6	65.6	65.6
4-5 PM	3773	0.0	OFF	3773	0	0.00	0	66.4	66.4	66.4
5-6 PM	3473	0.0	OFF	3473	0	0.00	0	67.8	67.8	67.8
6-7 PM	3189	0.0	OFF	3189	0	0.00	0	68.1	68.1	68.1
7-8 PM	2561	0.0	3000	2561	0	0.48	0	68.9	58.2	44.8
8-9 PM	2230	0.0	3000	2230	0	0.35	0	69.2	61.1	49.7
9-10 PM	1900	0.0	3000	1900	0	0.35	0	69.7	61.3	49.7
10-11 PM	1336	0.0	3000	1336	0	0.36	0	70.2	61.5	49.7
11PM-MID	919	0.0	3000	919	0	0.36	0	70.2	61.5	49.7

"OFF" INDICATES NO ROAD WORK (ALL LANES OPEN TO TRAFFIC)

----- SITE BREAKDOWN DELAYS -----	
BREAKDOWN DURATION (MINS)	0
RANGE OF QUEUE DELAY - MIN (VEH-H) MAX	0.0
AV BREAKDOWNS PER DAY	0.00
AV QUEUE DELAY/DAY (VEH-H)	0.0
AV TOTAL DELAY/DAY (VEH-H)	0.0

----- SITE ACCIDENT DELAYS -----	
BREAKDOWN DURATION (MINS)	0
RANGE OF QUEUE DELAY - MIN (VEH-H) MAX	0
AV BREAKDOWNS PER DAY	0
AV QUEUE DELAY/DAY (VEH-H)	0
AV TOTAL DELAY/DAY (VEH-H)	0

AVERAGE ACCIDENT NUMBERS (PIA/DAY)	
MAIN ROUTE WITHOUT WORKS	0.0240
MAIN ROUTE WITH WORKS	0.0229
'DIVERSION'	0.0000

PIA: Personal Injury Accidents

ECONOMIC IMPACT ON ROAD USERS	
ROAD USER COSTS PER DAY	\$1,398
CONGESTED HOURS PER DAY*	0

*Delays Exceeding User-Specified Maximum

IH 94: CTH BB/RAWSON AVE TO STH 100/RYAN RD (MILWAUKEE COUNTY)
NIGHTTIME CLOSURE
NO DIVERSION ROUTE (MAX QUEUE METHOD)

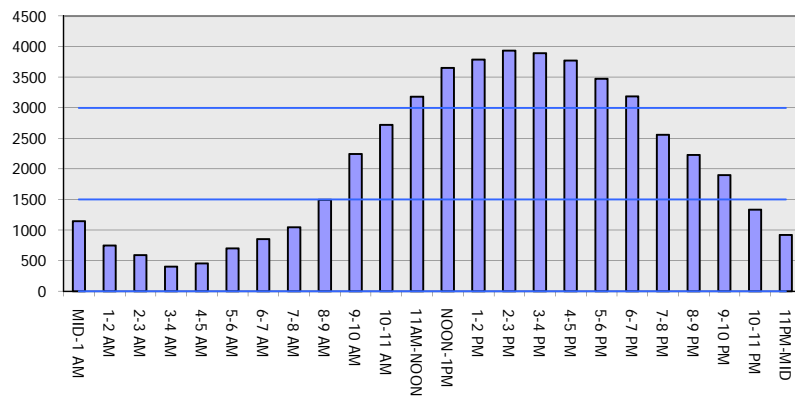
AUGUST

Analyzed for 2009
 Construction Season

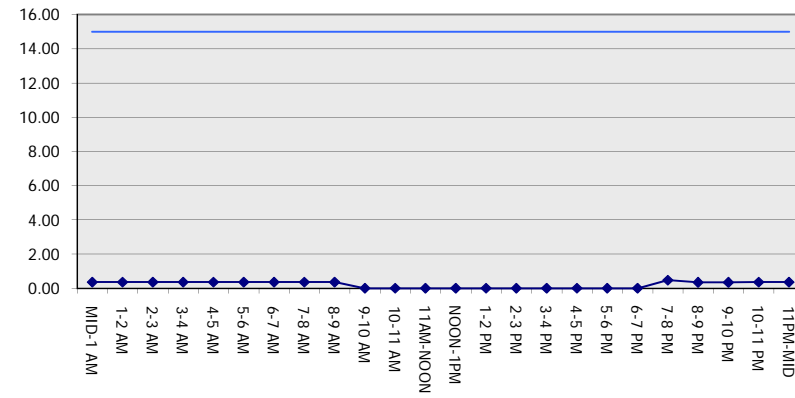
GRAPHICAL REPRESENTATION OF TRAFFIC MODEL INPUT AND OUTPUT

SUNDAY EASTBOUND DIRECTION

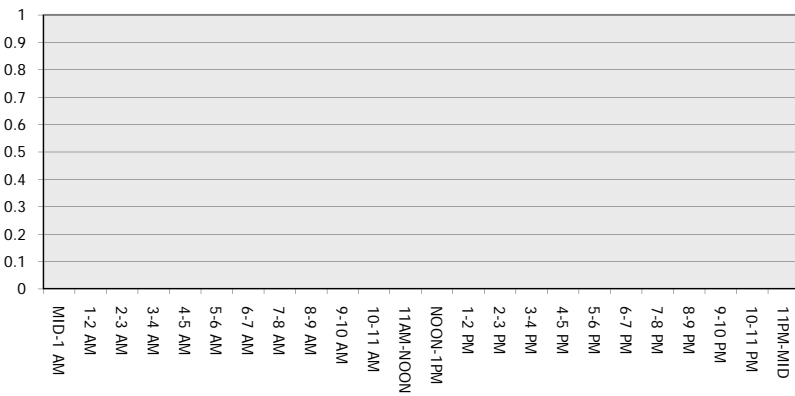
Main Route - Traffic Demand (Vehicles Per Hour)



Main Route Average Delay Per Vehicle (Minutes)



Main Route - Average Queue Length (Vehicles)



Main Route - Average Speed (MPH)

