

IH 94: CTH BB/RAWSON AVE TO STH 100/Ryan RD (MILWAUKEE COUNTY) NIGHTTIME 2 LANE CLOSURE NO DIVERSION ROUTE (MAX QUEUE METHOD)	AUGUST
	Analyzed for 2009 Construction Season

SUMMARY OF TRAFFIC MODEL OUTPUT

MON-THUR WESTBOUND DIRECTION

TIME OF DAY	FLOWS AND CAPACITY IN VEH/HR						AVERAGE SPEEDS IN MPH				
	MAIN ROUTE		SITE CAPA CITY	FLOW		AV.DEL PER VEH (MINS)	AVERAGE QUEUE (VEH)	MAIN ROUTE		SITE	
	DEMAND FLOW	PCT HEAVY		MAIN ROUTE	'DIVER TED'			WITHOUT WORK ZONE	WITH WORK ZONE		
MID-1 AM	716	0.0	1500	716	0	0.46	0	70.2	59.6	46.0	
1-2 AM	427	0.0	1500	427	0	0.42	0	70.2	60.2	47.3	
2-3 AM	375	0.0	1500	375	0	0.42	0	70.2	60.4	47.5	
3-4 AM	425	0.0	1500	425	0	0.42	0	70.2	60.2	47.3	
4-5 AM	672	0.0	1500	672	0	0.45	0	70.2	59.6	46.1	
5-6 AM	1826	0.0	OFF	1826	0	0.00	0	69.7	69.7	69.7	
6-7 AM	3577	0.0	OFF	3577	0	0.00	0	67.6	67.6	67.6	
7-8 AM	4078	0.0	OFF	4078	0	0.00	0	64.3	64.3	64.3	
8-9 AM	3402	0.0	OFF	3402	0	0.00	0	67.8	67.8	67.8	
9-10 AM	2907	0.0	OFF	2907	0	0.00	0	68.4	68.4	68.4	
10-11 AM	2974	0.0	OFF	2974	0	0.00	0	68.4	68.4	68.4	
11AM-NOON	3045	0.0	OFF	3045	0	0.00	0	68.2	68.2	68.2	
NOON-1PM	2969	0.0	OFF	2969	0	0.00	0	68.4	68.4	68.4	
1-2 PM	2918	0.0	OFF	2918	0	0.00	0	68.4	68.4	68.4	
2-3 PM	3406	0.0	OFF	3406	0	0.00	0	67.8	67.8	67.8	
3-4 PM	3658	0.0	OFF	3658	0	0.00	0	67.2	67.2	67.2	
4-5 PM	3545	0.0	OFF	3545	0	0.00	0	67.6	67.6	67.6	
5-6 PM	3323	0.0	OFF	3323	0	0.00	0	67.9	67.9	67.9	
6-7 PM	2744	0.0	OFF	2744	0	0.00	0	68.6	68.6	68.6	
7-8 PM	2182	0.0	1499	1899	284	11.47+	299	69.3	12.8	32.5	
8-9 PM	1822	0.0	1500	1500	322	16.29+	400	69.8	9.6	32.5	
9-10 PM	1785	0.0	1500	1500	285	16.29+	400	69.8	9.6	32.5	
10-11 PM	1485	0.0	1500	1452	33	15.81+	387	70.2	9.8	32.5	
11PM-MID	1133	0.0	1499	1133	0	6.23	191	70.2	20.4	36.8	

"OFF" INDICATES NO ROAD WORK (ALL LANES OPEN TO TRAFFIC)

+ INDICATES QUEUEING EXCEEDS USER-SPECIFIED MAXIMUM LIMIT

----- SITE BREAKDOWN DELAYS -----	
BREAKDOWN DURATION (MINS)	0
RANGE OF QUEUE DELAY - MIN (VEH-H) MAX	0.0
AV BREAKDOWNS PER DAY	0.00
AV QUEUE DELAY/DAY (VEH-H)	0.0
AV TOTAL DELAY/DAY (VEH-H)	0.0

----- SITE ACCIDENT DELAYS -----	
BREAKDOWN DURATION (MINS)	0
RANGE OF QUEUE DELAY - MIN (VEH-H) MAX	0
AV BREAKDOWNS PER DAY	0
AV QUEUE DELAY/DAY (VEH-H)	0
AV TOTAL DELAY/DAY (VEH-H)	0

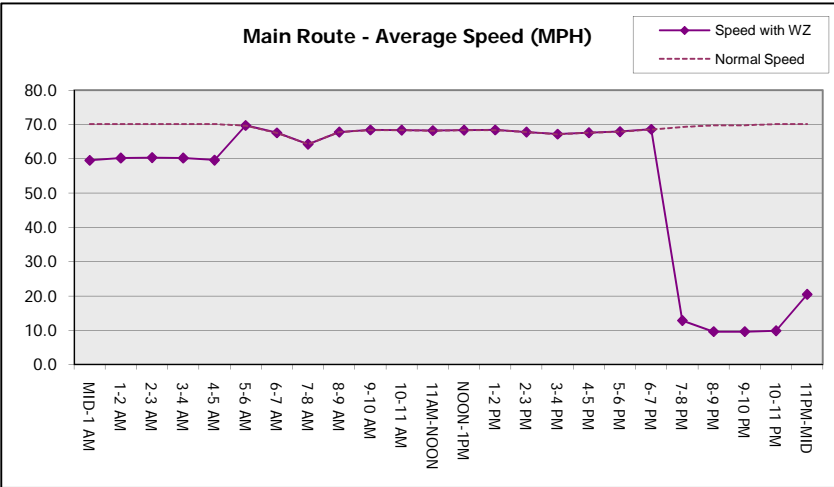
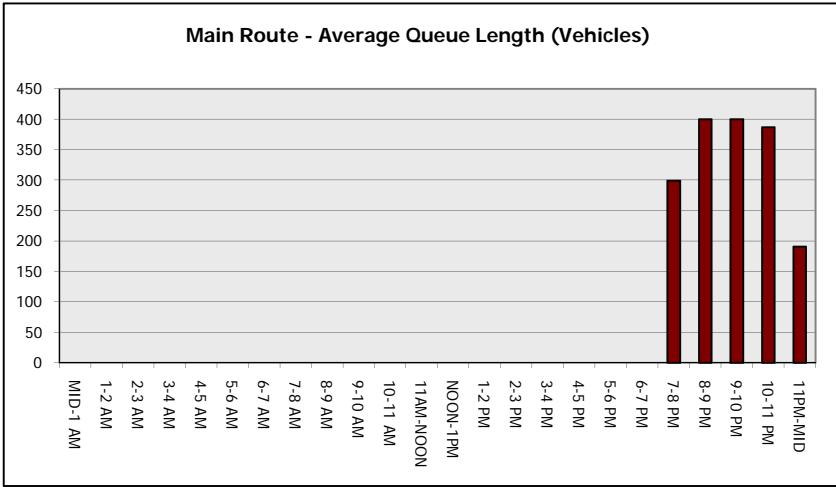
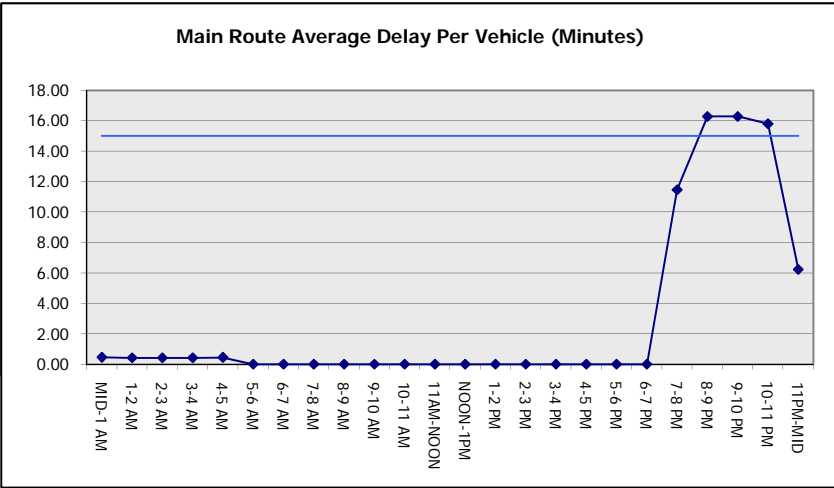
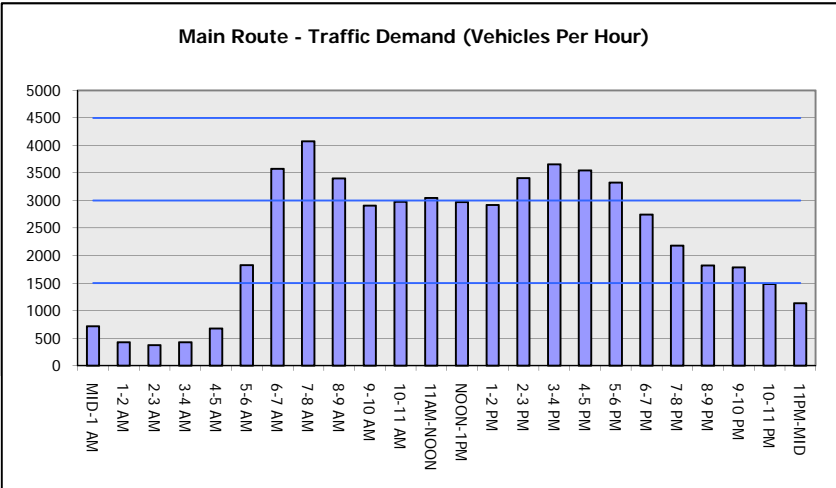
AVERAGE ACCIDENT NUMBERS (PIA/DAY)	
MAIN ROUTE WITHOUT WORKS	0.0265
MAIN ROUTE WITH WORKS	0.0254
'DIVERSION'	0.0010
PIA: Personal Injury Accidents	
IMPACTS ON ROAD USERS	
ROAD USER COSTS PER DAY	\$26,979
CONGESTED HOURS PER DAY*	4

*Delays Exceeding User-Specified Maximum

IH 94: CTH BB/RAWSON AVE TO STH 100/RYAN RD (MILWAUKEE COUNTY)
NIGHTTIME 2 LANE CLOSURE
NO DIVERSION ROUTE (MAX QUEUE METHOD)

AUGUST
 Analyzed for 2009
 Construction Season

GRAPHICAL REPRESENTATION OF TRAFFIC MODEL INPUT AND OUTPUT
MON-THUR WESTBOUND DIRECTION



IH 94: CTH BB/RAWSON AVE TO STH 100/Ryan RD (MILWAUKEE COUNTY) NIGHTTIME 2 LANE CLOSURE NO DIVERSION ROUTE (MAX QUEUE METHOD)	AUGUST
	Analyzed for 2009 Construction Season

SUMMARY OF TRAFFIC MODEL OUTPUT

MON-THUR EASTBOUND DIRECTION

TIME OF DAY	FLOWS AND CAPACITY IN VEH/HR							AVERAGE SPEEDS IN MPH		
	MAIN ROUTE		SITE CAPA CITY	FLOW		AV.DEL PER VEH (MINS)	AVERAGE QUEUE (VEH)	MAIN ROUTE		SITE
	DEMAND FLOW	PCT HEAVY		MAIN ROUTE	'DIVER TED'			WITHOUT WORK ZONE	WITH WORK ZONE	
MID-1 AM	638	0.0	1500	638	0	0.45	0	70.2	59.7	46.3
1-2 AM	420	0.0	1500	420	0	0.42	0	70.2	60.2	47.3
2-3 AM	391	0.0	1500	391	0	0.42	0	70.2	60.4	47.4
3-4 AM	471	0.0	1500	471	0	0.43	0	70.2	60.1	47.1
4-5 AM	994	0.0	1499	994	0	0.54	0	70.2	57.9	43.3
5-6 AM	2160	0.0	OFF	2160	0	0.00	0	69.4	69.4	69.4
6-7 AM	3087	0.0	OFF	3087	0	0.00	0	68.2	68.2	68.2
7-8 AM	3172	0.0	OFF	3172	0	0.00	0	68.1	68.1	68.1
8-9 AM	2918	0.0	OFF	2918	0	0.00	0	68.4	68.4	68.4
9-10 AM	2829	0.0	OFF	2829	0	0.00	0	68.5	68.5	68.5
10-11 AM	2662	0.0	OFF	2662	0	0.00	0	68.7	68.7	68.7
11AM-NOON	2822	0.0	OFF	2822	0	0.00	0	68.6	68.6	68.6
NOON-1PM	3029	0.0	OFF	3029	0	0.00	0	68.2	68.2	68.2
1-2 PM	3049	0.0	OFF	3049	0	0.00	0	68.2	68.2	68.2
2-3 PM	3687	0.0	OFF	3687	0	0.00	0	66.9	66.9	66.9
3-4 PM	4024	0.0	OFF	4024	0	0.00	0	64.6	64.6	64.6
4-5 PM	4387	0.0	OFF	4387	0	0.00	0	62.2	62.2	62.2
5-6 PM	4356	0.0	OFF	4356	0	0.00	0	62.4	62.4	62.4
6-7 PM	3335	0.0	OFF	3335	0	0.00	0	67.9	67.9	67.9
7-8 PM	2413	0.0	1499	1872	541	12.90+	322	69.1	11.6	34.6
8-9 PM	2071	0.0	1499	1500	571	16.28+	399	69.5	9.6	32.5
9-10 PM	1929	0.0	1500	1500	429	16.29+	400	69.6	9.6	32.5
10-11 PM	1583	0.0	1500	1500	84	15.81+	387	70.0	9.8	32.5
11PM-MID	1110	0.0	1499	1110	0	6.54	206	70.2	19.7	37.4

"OFF" INDICATES NO ROAD WORK (ALL LANES OPEN TO TRAFFIC)

+ INDICATES QUEUEING EXCEEDS USER-SPECIFIED MAXIMUM LIMIT

----- SITE BREAKDOWN DELAYS -----	
BREAKDOWN DURATION (MINS)	0
RANGE OF QUEUE DELAY - MIN (VEH-H) MAX	0.0
AV BREAKDOWNS PER DAY	0.00
AV QUEUE DELAY/DAY (VEH-H)	0.0
AV TOTAL DELAY/DAY (VEH-H)	0.0

----- SITE ACCIDENT DELAYS -----	
BREAKDOWN DURATION (MINS)	0
RANGE OF QUEUE DELAY - MIN (VEH-H) MAX	0
AV BREAKDOWNS PER DAY	0
AV QUEUE DELAY/DAY (VEH-H)	0
AV TOTAL DELAY/DAY (VEH-H)	0

AVERAGE ACCIDENT NUMBERS (PIA/DAY)	
MAIN ROUTE WITHOUT WORKS	0.0275
MAIN ROUTE WITH WORKS	0.0260
'DIVERSION'	0.0018

PIA: Personal Injury Accidents

ECONOMIC IMPACT ON ROAD USERS	
ROAD USER COSTS PER DAY	\$30,356
CONGESTED HOURS PER DAY*	4

*Delays Exceeding User-Specified Maximum

IH 94: CTH BB/RAWSON AVE TO STH 100/RYAN RD (MILWAUKEE COUNTY)
NIGHTTIME 2 LANE CLOSURE
NO DIVERSION ROUTE (MAX QUEUE METHOD)

AUGUST

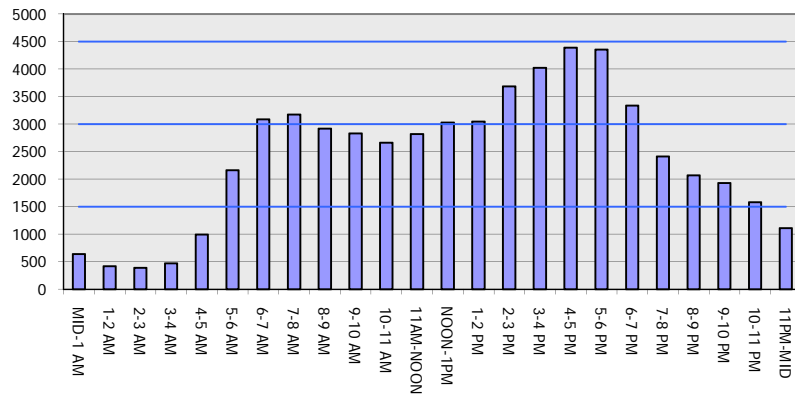
Analyzed for 2009
 Construction Season

GRAPHICAL REPRESENTATION OF TRAFFIC MODEL INPUT AND OUTPUT

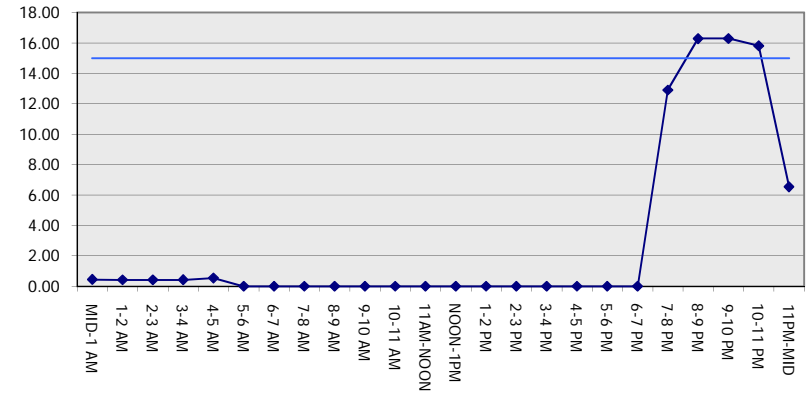
MON-THUR

EASTBOUND DIRECTION

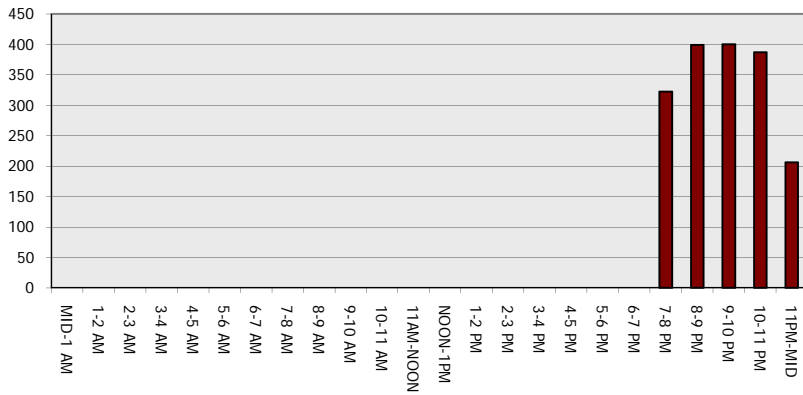
Main Route - Traffic Demand (Vehicles Per Hour)



Main Route Average Delay Per Vehicle (Minutes)



Main Route - Average Queue Length (Vehicles)



Main Route - Average Speed (MPH)

