

IH 94: CTH ZZ/COLLEGE AVE TO CTH BB/RAWSON AVE (MILWAUKEE COUNTY) NIGHTTIME CLOSURE NO DIVERSION ROUTE (MAX QUEUE METHOD)	OCTOBER
	Analyzed for 2009 Construction Season

SUMMARY OF TRAFFIC MODEL OUTPUT

SATURDAY WESTBOUND DIRECTION

TIME OF DAY	FLOWS AND CAPACITY IN VEH/HR						AVERAGE SPEEDS IN MPH			
	MAIN ROUTE		SITE CAPA CITY	FLOW		AV.DEL PER VEH (MINS)	AVERAGE QUEUE (VEH)	MAIN ROUTE		SITE
	DEMAND FLOW	PCT HEAVY		MAIN ROUTE	'DIVER TED'			WITHOUT WORK ZONE	WITH WORK ZONE	
MID-1 AM	989	0.0	3000	989	0	0.18	0	70.2	57.9	49.7
1-2 AM	557	0.0	3000	557	0	0.18	0	70.2	57.9	49.7
2-3 AM	491	0.0	3000	491	0	0.18	0	70.2	57.9	49.7
3-4 AM	450	0.0	3000	450	0	0.18	0	70.2	57.9	49.7
4-5 AM	562	0.0	3000	562	0	0.18	0	70.2	57.9	49.7
5-6 AM	932	0.0	3000	932	0	0.18	0	70.2	57.9	49.7
6-7 AM	1471	0.0	3000	1471	0	0.18	0	70.2	57.9	49.7
7-8 AM	2026	0.0	3000	2026	0	0.18	0	69.5	57.6	49.7
8-9 AM	2665	0.0	OFF	2665	0	0.00	0	68.7	68.7	68.7
9-10 AM	3010	0.0	OFF	3010	0	0.00	0	68.3	68.3	68.3
10-11 AM	3296	0.0	OFF	3296	0	0.00	0	67.9	67.9	67.9
11AM-NOON	3563	0.0	OFF	3563	0	0.00	0	67.6	67.6	67.6
NOON-1PM	3696	0.0	OFF	3696	0	0.00	0	66.9	66.9	66.9
1-2 PM	3546	0.0	OFF	3546	0	0.00	0	67.6	67.6	67.6
2-3 PM	3608	0.0	OFF	3608	0	0.00	0	67.5	67.5	67.5
3-4 PM	3717	0.0	OFF	3717	0	0.00	0	66.8	66.8	66.8
4-5 PM	3677	0.0	OFF	3677	0	0.00	0	67.1	67.1	67.1
5-6 PM	3732	0.0	OFF	3732	0	0.00	0	66.7	66.7	66.7
6-7 PM	3339	0.0	2999	3339	0	3.71	201	67.9	14.8	36.9
7-8 PM	2712	0.0	2999	2712	0	4.30	231	68.7	13.8	38.4
8-9 PM	2180	0.0	3000	2180	0	0.20	1	69.3	56.4	49.7
9-10 PM	2080	0.0	3000	2080	0	0.18	0	69.4	57.6	49.7
10-11 PM	1873	0.0	3000	1873	0	0.18	0	69.7	57.7	49.7
11PM-MID	1522	0.0	3000	1522	0	0.18	0	70.2	57.9	49.7

"OFF" INDICATES NO ROAD WORK (ALL LANES OPEN TO TRAFFIC)

----- SITE BREAKDOWN DELAYS -----	
BREAKDOWN DURATION (MINS)	0
RANGE OF QUEUE DELAY - MIN (VEH-H) MAX	0.0
AV BREAKDOWNS PER DAY	0.00
AV QUEUE DELAY/DAY (VEH-H)	0.0
AV TOTAL DELAY/DAY (VEH-H)	0.0

----- SITE ACCIDENT DELAYS -----	
BREAKDOWN DURATION (MINS)	0
RANGE OF QUEUE DELAY - MIN (VEH-H) MAX	0
AV BREAKDOWNS PER DAY	0
AV QUEUE DELAY/DAY (VEH-H)	0
AV TOTAL DELAY/DAY (VEH-H)	0

AVERAGE ACCIDENT NUMBERS (PIA/DAY)	
MAIN ROUTE WITHOUT WORKS	0.0089
MAIN ROUTE WITH WORKS	0.0066
'DIVERSION'	0.0000
<small>PIA: Personal Injury Accidents</small>	
IMPACTS ON ROAD USERS	
ROAD USER COSTS PER DAY	\$7,476
CONGESTED HOURS PER DAY*	0

*Delays Exceeding User-Specified Maximum

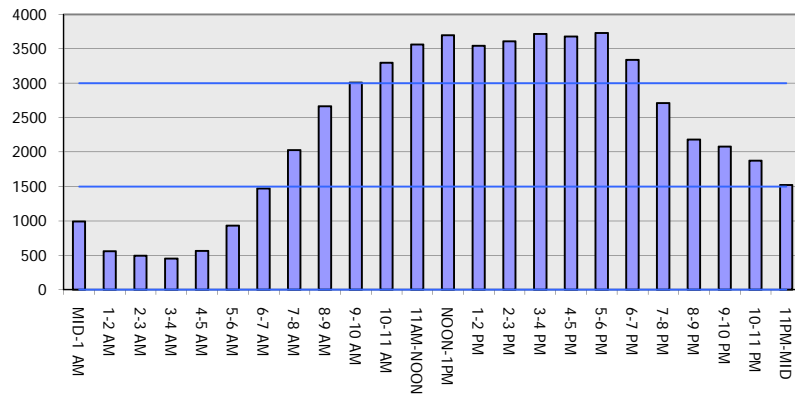
IH 94: CTH ZZ/COLLEGE AVE TO CTH BB/RAWSON AVE (MILWAUKEE COUNTY)
NIGHTTIME CLOSURE
NO DIVERSION ROUTE (MAX QUEUE METHOD)

OCTOBER

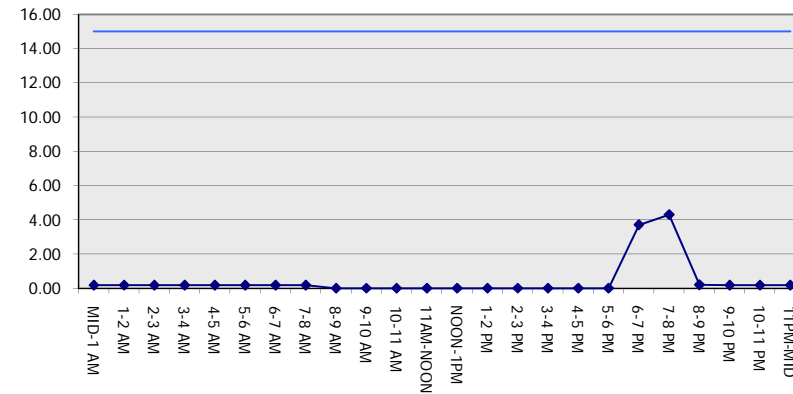
Analyzed for 2009
 Construction Season

GRAPHICAL REPRESENTATION OF TRAFFIC MODEL INPUT AND OUTPUT
SATURDAY WESTBOUND DIRECTION

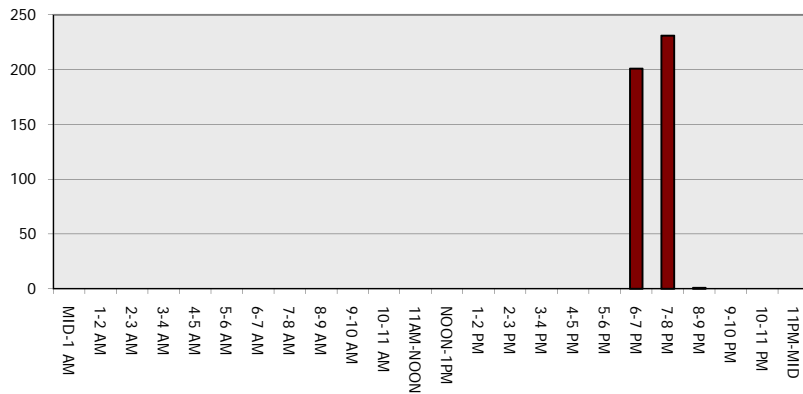
Main Route - Traffic Demand (Vehicles Per Hour)



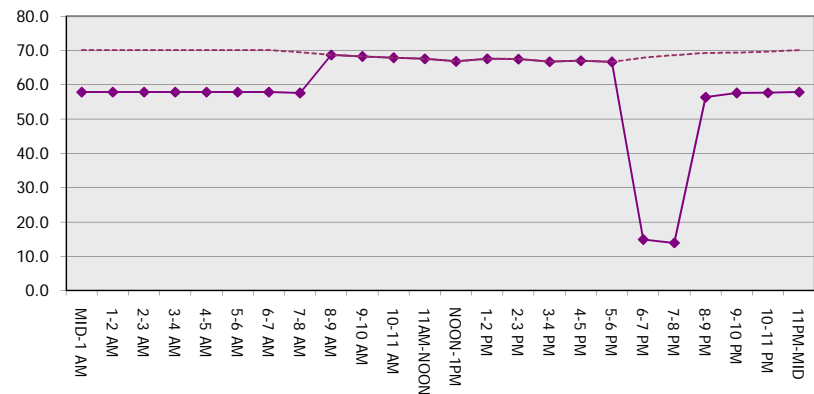
Main Route Average Delay Per Vehicle (Minutes)



Main Route - Average Queue Length (Vehicles)



Main Route - Average Speed (MPH)



IH 94: CTH ZZ/COLLEGE AVE TO CTH BB/RAWSON AVE (MILWAUKEE COUNTY) NIGHTTIME CLOSURE NO DIVERSION ROUTE (MAX QUEUE METHOD)	OCTOBER
	Analyzed for 2009 Construction Season

SUMMARY OF TRAFFIC MODEL OUTPUT

SATURDAY EASTBOUND DIRECTION

TIME OF DAY	FLOWS AND CAPACITY IN VEH/HR						AVERAGE SPEEDS IN MPH			
	MAIN ROUTE		SITE CAPA CITY	FLOW		AV.DEL PER VEH (MINS)	AVERAGE QUEUE (VEH)	MAIN ROUTE		SITE
	DEMAND FLOW	PCT HEAVY		MAIN ROUTE	'DIVER TED'			WITHOUT WORK ZONE	WITH WORK ZONE	
MID-1 AM	945	0.0	3000	945	0	0.18	0	70.2	57.9	49.7
1-2 AM	628	0.0	3000	628	0	0.18	0	70.2	57.9	49.7
2-3 AM	596	0.0	3000	596	0	0.18	0	70.2	57.9	49.7
3-4 AM	550	0.0	3000	550	0	0.18	0	70.2	57.9	49.7
4-5 AM	692	0.0	3000	692	0	0.18	0	70.2	57.9	49.7
5-6 AM	1177	0.0	3000	1177	0	0.18	0	70.2	57.9	49.7
6-7 AM	1605	0.0	3000	1605	0	0.18	0	70.0	57.8	49.7
7-8 AM	1858	0.0	3000	1858	0	0.18	0	69.7	57.7	49.7
8-9 AM	2448	0.0	OFF	2448	0	0.00	0	69.0	69.0	69.0
9-10 AM	3075	0.0	OFF	3075	0	0.00	0	68.2	68.2	68.2
10-11 AM	3341	0.0	OFF	3341	0	0.00	0	67.9	67.9	67.9
11AM-NOON	3708	0.0	OFF	3708	0	0.00	0	66.8	66.8	66.8
NOON-1PM	3864	0.0	OFF	3864	0	0.00	0	65.8	65.8	65.8
1-2 PM	3468	0.0	OFF	3468	0	0.00	0	67.8	67.8	67.8
2-3 PM	3745	0.0	OFF	3745	0	0.00	0	66.6	66.6	66.6
3-4 PM	3766	0.0	OFF	3766	0	0.00	0	66.4	66.4	66.4
4-5 PM	3515	0.0	OFF	3515	0	0.00	0	67.7	67.7	67.7
5-6 PM	3350	0.0	OFF	3350	0	0.00	0	67.9	67.9	67.9
6-7 PM	2888	0.0	2999	2888	0	0.36	0	68.4	48.4	38.8
7-8 PM	2398	0.0	3000	2398	0	0.19	0	69.1	56.8	48.7
8-9 PM	2025	0.0	3000	2025	0	0.18	0	69.6	57.6	49.7
9-10 PM	1921	0.0	3000	1921	0	0.18	0	69.7	57.7	49.7
10-11 PM	1831	0.0	3000	1831	0	0.18	0	69.7	57.8	49.7
11PM-MID	1377	0.0	3000	1377	0	0.18	0	70.2	57.9	49.7

"OFF" INDICATES NO ROAD WORK (ALL LANES OPEN TO TRAFFIC)

----- SITE BREAKDOWN DELAYS -----	
BREAKDOWN DURATION (MINS)	0
RANGE OF QUEUE DELAY - MIN	0.0
(VEH-H) MAX	0.0
AV BREAKDOWNS PER DAY	0.00
AV QUEUE DELAY/DAY (VEH-H)	0.0
AV TOTAL DELAY/DAY (VEH-H)	0.0

----- SITE ACCIDENT DELAYS -----	
BREAKDOWN DURATION (MINS)	0
RANGE OF QUEUE DELAY - MIN	0
(VEH-H) MAX	0
AV BREAKDOWNS PER DAY	0
AV QUEUE DELAY/DAY (VEH-H)	0
AV TOTAL DELAY/DAY (VEH-H)	0

AVERAGE ACCIDENT NUMBERS (PIA/DAY)	
MAIN ROUTE WITHOUT WORKS	0.0087
MAIN ROUTE WITH WORKS	0.0065
'DIVERSION'	0.0000

PIA: Personal Injury Accidents

ECONOMIC IMPACT ON ROAD USERS	
ROAD USER COSTS PER DAY	\$1,180
CONGESTED HOURS PER DAY*	0

*Delays Exceeding User-Specified Maximum

IH 94: CTH ZZ/COLLEGE AVE TO CTH BB/RAWSON AVE (MILWAUKEE COUNTY)
NIGHTTIME CLOSURE
NO DIVERSION ROUTE (MAX QUEUE METHOD)

OCTOBER

Analyzed for 2009
 Construction Season

GRAPHICAL REPRESENTATION OF TRAFFIC MODEL INPUT AND OUTPUT
SATURDAY EASTBOUND DIRECTION

