

<b>IH 94: CTH ZZ/COLLEGE AVE TO CTH BB/RAWSON AVE (MILWAUKEE COUNTY)</b> <b>NIGHTTIME 2 LANE CLOSURE</b> <b>NO DIVERSION ROUTE (MAX QUEUE METHOD)</b>	<b>OCTOBER</b>
	Analyzed for 2009 Construction Season

**SUMMARY OF TRAFFIC MODEL OUTPUT**

MON-THUR                      WESTBOUND DIRECTION

TIME OF DAY	FLOWS AND CAPACITY IN VEH/HR						AVERAGE SPEEDS IN MPH				
	MAIN ROUTE		SITE CAPA CITY	FLOW		AV.DEL PER VEH (MINS)	AVERAGE QUEUE (VEH)	MAIN ROUTE		SITE	
	DEMAND FLOW	PCT HEAVY		MAIN ROUTE	'DIVER TED'			WITHOUT WORK ZONE	WITH WORK ZONE		
MID-1 AM	678	0.0	1500	678	0	0.23	0	70.2	55.3	46.1	
1-2 AM	408	0.0	1500	408	0	0.21	0	70.2	56.2	47.3	
2-3 AM	392	0.0	1500	392	0	0.21	0	70.2	56.3	47.4	
3-4 AM	453	0.0	1500	453	0	0.22	0	70.2	56.0	47.1	
4-5 AM	760	0.0	1500	760	0	0.23	0	70.2	55.1	45.8	
5-6 AM	2063	0.0	OFF	2063	0	0.00	0	69.5	69.5	69.5	
6-7 AM	4035	0.0	OFF	4035	0	0.00	0	64.6	64.6	64.6	
7-8 AM	4512	0.0	OFF	4512	0	0.00	0	61.4	61.4	61.4	
8-9 AM	3747	0.0	OFF	3747	0	0.00	0	66.6	66.6	66.6	
9-10 AM	3120	0.0	OFF	3120	0	0.00	0	68.2	68.2	68.2	
10-11 AM	3015	0.0	OFF	3015	0	0.00	0	68.3	68.3	68.3	
11AM-NOON	3036	0.0	OFF	3036	0	0.00	0	68.2	68.2	68.2	
NOON-1PM	3140	0.0	OFF	3140	0	0.00	0	68.1	68.1	68.1	
1-2 PM	3259	0.0	OFF	3259	0	0.00	0	68.0	68.0	68.0	
2-3 PM	3636	0.0	OFF	3636	0	0.00	0	67.3	67.3	67.3	
3-4 PM	4072	0.0	OFF	4072	0	0.00	0	64.3	64.3	64.3	
4-5 PM	3858	0.0	OFF	3858	0	0.00	0	65.8	65.8	65.8	
5-6 PM	3719	0.0	OFF	3719	0	0.00	0	66.8	66.8	66.8	
6-7 PM	3140	0.0	OFF	3140	0	0.00	0	68.1	68.1	68.1	
7-8 PM	2302	0.0	1499	1975	327	12.65+	330	69.2	6.2	32.5	
8-9 PM	1888	0.0	1499	1471	417	16.47+	417	69.7	5.5	32.5	
9-10 PM	1852	0.0	1499	1497	355	16.56+	419	69.7	5.5	32.5	
10-11 PM	1458	0.0	1499	1394	64	15.50+	392	70.2	5.6	32.5	
11PM-MID	1029	0.0	1499	1029	0	2.28	141	70.2	20.9	39.7	

"OFF" INDICATES NO ROAD WORK (ALL LANES OPEN TO TRAFFIC)

+ INDICATES QUEUEING EXCEEDS USER-SPECIFIED MAXIMUM LIMIT

*----- SITE BREAKDOWN DELAYS -----*	
BREAKDOWN DURATION (MINS)	0
RANGE OF QUEUE DELAY - MIN (VEH-H) MAX	0.0
AV BREAKDOWNS PER DAY	0.00
AV QUEUE DELAY/DAY (VEH-H)	0.0
AV TOTAL DELAY/DAY (VEH-H)	0.0

*----- SITE ACCIDENT DELAYS -----*	
BREAKDOWN DURATION (MINS)	0
RANGE OF QUEUE DELAY - MIN (VEH-H) MAX	0
AV BREAKDOWNS PER DAY	0
AV QUEUE DELAY/DAY (VEH-H)	0
AV TOTAL DELAY/DAY (VEH-H)	0

AVERAGE ACCIDENT NUMBERS (PIA/DAY)	
MAIN ROUTE WITHOUT WORKS	0.0095
MAIN ROUTE WITH WORKS	0.0082
'DIVERSION'	0.0004
<small>PIA: Personal Injury Accidents</small>	
IMPACTS ON ROAD USERS	
ROAD USER COSTS PER DAY	\$27,449
CONGESTED HOURS PER DAY*	4

\*Delays Exceeding User-Specified Maximum

**IH 94: CTH ZZ/COLLEGE AVE TO CTH BB/RAWSON AVE (MILWAUKEE COUNTY)**  
**NIGHTTIME 2 LANE CLOSURE**  
**NO DIVERSION ROUTE (MAX QUEUE METHOD)**

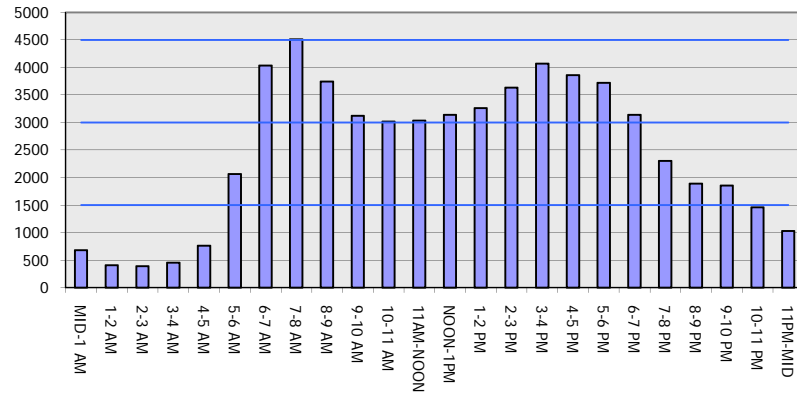
**OCTOBER**

Analyzed for 2009  
 Construction Season

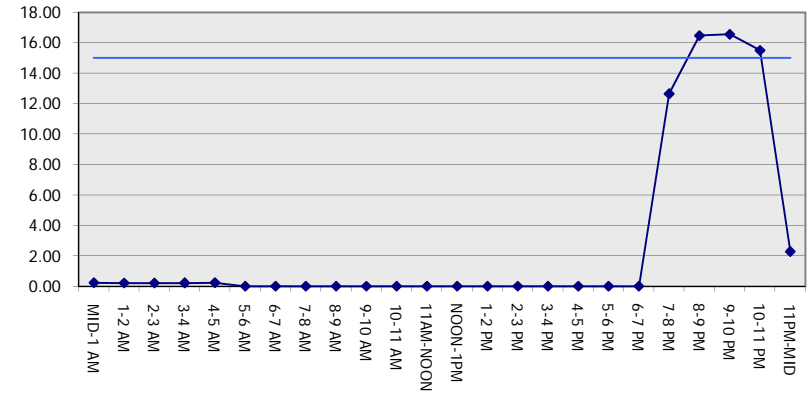
**GRAPHICAL REPRESENTATION OF TRAFFIC MODEL INPUT AND OUTPUT**

**MON-THUR WESTBOUND DIRECTION**

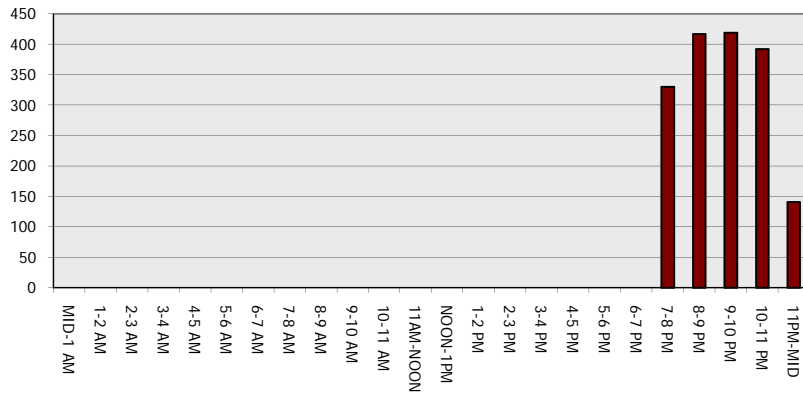
**Main Route - Traffic Demand (Vehicles Per Hour)**



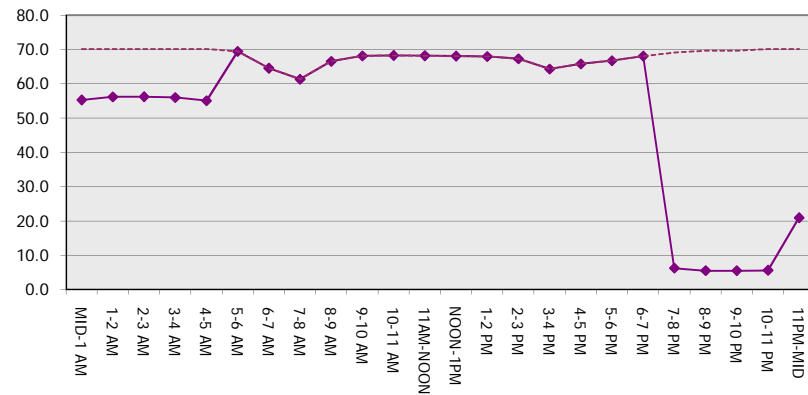
**Main Route Average Delay Per Vehicle (Minutes)**



**Main Route - Average Queue Length (Vehicles)**



**Main Route - Average Speed (MPH)**



<b>IH 94: CTH ZZ/COLLEGE AVE TO CTH BB/RAWSON AVE (MILWAUKEE COUNTY)</b> <b>NIGHTTIME 2 LANE CLOSURE</b> <b>NO DIVERSION ROUTE (MAX QUEUE METHOD)</b>	<b>OCTOBER</b>
	Analyzed for 2009 Construction Season

**SUMMARY OF TRAFFIC MODEL OUTPUT**

MON-THUR                      EASTBOUND DIRECTION

TIME OF DAY	FLOWS AND CAPACITY IN VEH/HR							AVERAGE SPEEDS IN MPH			
	MAIN ROUTE		SITE CAPA CITY	FLOW		AV.DEL PER VEH (MINS)	AVERAGE QUEUE (VEH)	MAIN ROUTE		SITE	
	DEMAND FLOW	PCT HEAVY		MAIN ROUTE	'DIVER TED'			WITHOUT WORK ZONE	WITH WORK ZONE		
MID-1 AM	609	0.0	1500	609	0	0.23	0	70.2	55.5	46.5	
1-2 AM	447	0.0	1500	447	0	0.22	0	70.2	56.1	47.1	
2-3 AM	436	0.0	1500	436	0	0.21	0	70.2	56.1	47.2	
3-4 AM	558	0.0	1500	558	0	0.22	0	70.2	55.7	46.6	
4-5 AM	1041	0.0	1499	1041	0	0.29	0	70.2	52.4	42.4	
5-6 AM	2269	0.0	OFF	2269	0	0.00	0	69.2	69.2	69.2	
6-7 AM	3858	0.0	OFF	3858	0	0.00	0	65.8	65.8	65.8	
7-8 AM	3494	0.0	OFF	3494	0	0.00	0	67.7	67.7	67.7	
8-9 AM	3353	0.0	OFF	3353	0	0.00	0	67.9	67.9	67.9	
9-10 AM	2985	0.0	OFF	2985	0	0.00	0	68.3	68.3	68.3	
10-11 AM	2860	0.0	OFF	2860	0	0.00	0	68.5	68.5	68.5	
11AM-NOON	3065	0.0	OFF	3065	0	0.00	0	68.2	68.2	68.2	
NOON-1PM	3307	0.0	OFF	3307	0	0.00	0	67.9	67.9	67.9	
1-2 PM	3531	0.0	OFF	3531	0	0.00	0	67.6	67.6	67.6	
2-3 PM	4119	0.0	OFF	4119	0	0.00	0	64.0	64.0	64.0	
3-4 PM	4547	0.0	OFF	4547	0	0.00	0	61.1	61.1	61.1	
4-5 PM	4843	0.0	OFF	4843	0	0.00	0	59.1	59.1	59.1	
5-6 PM	4882	0.0	OFF	4882	0	0.00	0	58.8	58.8	58.8	
6-7 PM	3810	0.0	OFF	3810	0	0.00	0	66.1	66.1	66.1	
7-8 PM	2715	0.0	1499	1691	1023	15.02+	387	68.7	5.7	38.2	
8-9 PM	2199	0.0	1499	1694	504	15.10+	388	69.3	5.7	33.5	
9-10 PM	1992	0.0	1499	1504	488	16.56+	420	69.6	5.5	32.5	
10-11 PM	1515	0.0	1500	1472	43	15.82+	400	70.2	5.5	32.4	
11PM-MID	1039	0.0	1499	1039	0	3.01	168	70.2	17.5	39.0	

"OFF" INDICATES NO ROAD WORK (ALL LANES OPEN TO TRAFFIC)

+ INDICATES QUEUEING EXCEEDS USER-SPECIFIED MAXIMUM LIMIT

BREAKDOWN DURATION (MINS)	0
RANGE OF QUEUE DELAY - MIN (VEH-H) MAX	0.0
AV BREAKDOWNS PER DAY	0.00
AV QUEUE DELAY/DAY (VEH-H)	0.0
AV TOTAL DELAY/DAY (VEH-H)	0.0

BREAKDOWN DURATION (MINS)	0
RANGE OF QUEUE DELAY - MIN (VEH-H) MAX	0
AV BREAKDOWNS PER DAY	0
AV QUEUE DELAY/DAY (VEH-H)	0
AV TOTAL DELAY/DAY (VEH-H)	0

MAIN ROUTE WITHOUT WORKS	0.0101
MAIN ROUTE WITH WORKS	0.0086
'DIVERSION'	0.0008

PIA: Personal Injury Accidents

ROAD USER COSTS PER DAY	\$31,785
CONGESTED HOURS PER DAY*	4

\*Delays Exceeding User-Specified Maximum

**IH 94: CTH ZZ/COLLEGE AVE TO CTH BB/RAWSON AVE (MILWAUKEE COUNTY)**  
**NIGHTTIME 2 LANE CLOSURE**  
**NO DIVERSION ROUTE (MAX QUEUE METHOD)**

**OCTOBER**

Analyzed for 2009  
 Construction Season

**GRAPHICAL REPRESENTATION OF TRAFFIC MODEL INPUT AND OUTPUT**  
**MON-THUR EASTBOUND DIRECTION**

