

<b>IH 94: CTH ZZ/COLLEGE AVE TO CTH BB/RAWSON AVE (MILWAUKEE COUNTY)</b> <b>NIGHTTIME CLOSURE</b> <b>NO DIVERSION ROUTE (MAX QUEUE METHOD)</b>	<b>OCTOBER</b>
	Analyzed for 2009 Construction Season

**SUMMARY OF TRAFFIC MODEL OUTPUT**

MON-THUR                      WESTBOUND DIRECTION

TIME OF DAY	FLOWS AND CAPACITY IN VEH/HR						AVERAGE SPEEDS IN MPH			
	MAIN ROUTE		SITE CAPA CITY	FLOW		AV.DEL PER VEH (MINS)	AVERAGE QUEUE (VEH)	MAIN ROUTE		SITE
	DEMAND FLOW	PCT HEAVY		MAIN ROUTE	'DIVER TED'			WITHOUT WORK ZONE	WITH WORK ZONE	
MID-1 AM	678	0.0	3000	678	0	0.18	0	70.2	57.9	49.7
1-2 AM	408	0.0	3000	408	0	0.18	0	70.2	57.9	49.7
2-3 AM	392	0.0	3000	392	0	0.18	0	70.2	57.9	49.7
3-4 AM	453	0.0	3000	453	0	0.18	0	70.2	57.9	49.7
4-5 AM	760	0.0	3000	760	0	0.18	0	70.2	57.9	49.7
5-6 AM	2063	0.0	OFF	2063	0	0.00	0	69.5	69.5	69.5
6-7 AM	4035	0.0	OFF	4035	0	0.00	0	64.6	64.6	64.6
7-8 AM	4512	0.0	OFF	4512	0	0.00	0	61.4	61.4	61.4
8-9 AM	3747	0.0	OFF	3747	0	0.00	0	66.6	66.6	66.6
9-10 AM	3120	0.0	OFF	3120	0	0.00	0	68.2	68.2	68.2
10-11 AM	3015	0.0	OFF	3015	0	0.00	0	68.3	68.3	68.3
11AM-NOON	3036	0.0	OFF	3036	0	0.00	0	68.2	68.2	68.2
NOON-1PM	3140	0.0	OFF	3140	0	0.00	0	68.1	68.1	68.1
1-2 PM	3259	0.0	OFF	3259	0	0.00	0	68.0	68.0	68.0
2-3 PM	3636	0.0	OFF	3636	0	0.00	0	67.3	67.3	67.3
3-4 PM	4072	0.0	OFF	4072	0	0.00	0	64.3	64.3	64.3
4-5 PM	3858	0.0	OFF	3858	0	0.00	0	65.8	65.8	65.8
5-6 PM	3719	0.0	OFF	3719	0	0.00	0	66.8	66.8	66.8
6-7 PM	3140	0.0	OFF	3140	0	0.00	0	68.1	68.1	68.1
7-8 PM	2302	0.0	3000	2302	0	0.18	0	69.2	57.6	49.7
8-9 PM	1888	0.0	3000	1888	0	0.18	0	69.7	57.7	49.7
9-10 PM	1852	0.0	3000	1852	0	0.18	0	69.7	57.8	49.7
10-11 PM	1458	0.0	3000	1458	0	0.18	0	70.2	57.9	49.7
11PM-MID	1029	0.0	3000	1029	0	0.18	0	70.2	57.9	49.7

**"OFF" INDICATES NO ROAD WORK (ALL LANES OPEN TO TRAFFIC)**

*----- SITE BREAKDOWN DELAYS -----*	
BREAKDOWN DURATION (MINS)	0
RANGE OF QUEUE DELAY - MIN (VEH-H) MAX	0.0
AV BREAKDOWNS PER DAY	0.00
AV QUEUE DELAY/DAY (VEH-H)	0.0
AV TOTAL DELAY/DAY (VEH-H)	0.0

*----- SITE ACCIDENT DELAYS -----*	
BREAKDOWN DURATION (MINS)	0
RANGE OF QUEUE DELAY - MIN (VEH-H) MAX	0
AV BREAKDOWNS PER DAY	0
AV QUEUE DELAY/DAY (VEH-H)	0
AV TOTAL DELAY/DAY (VEH-H)	0

AVERAGE ACCIDENT NUMBERS (PIA/DAY)	
MAIN ROUTE WITHOUT WORKS	0.0095
MAIN ROUTE WITH WORKS	0.0083
'DIVERSION'	0.0000
PIA: Personal Injury Accidents	
IMPACTS ON ROAD USERS	
ROAD USER COSTS PER DAY	\$400
CONGESTED HOURS PER DAY*	0

\*Delays Exceeding User-Specified Maximum

**IH 94: CTH ZZ/COLLEGE AVE TO CTH BB/RAWSON AVE (MILWAUKEE COUNTY)**  
**NIGHTTIME CLOSURE**  
**NO DIVERSION ROUTE (MAX QUEUE METHOD)**

**OCTOBER**

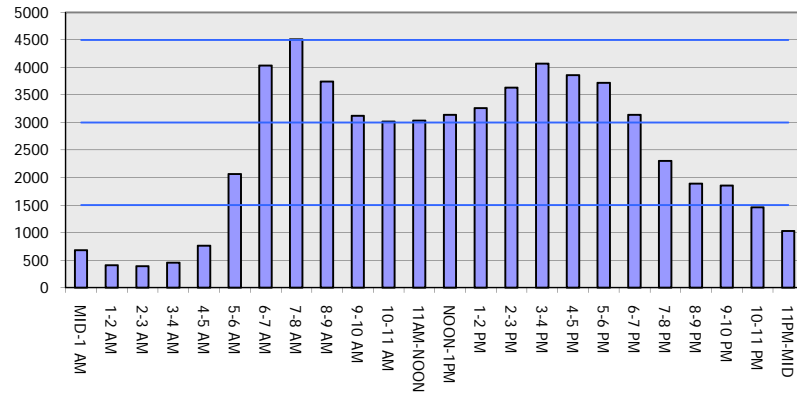
Analyzed for 2009  
 Construction Season

**GRAPHICAL REPRESENTATION OF TRAFFIC MODEL INPUT AND OUTPUT**

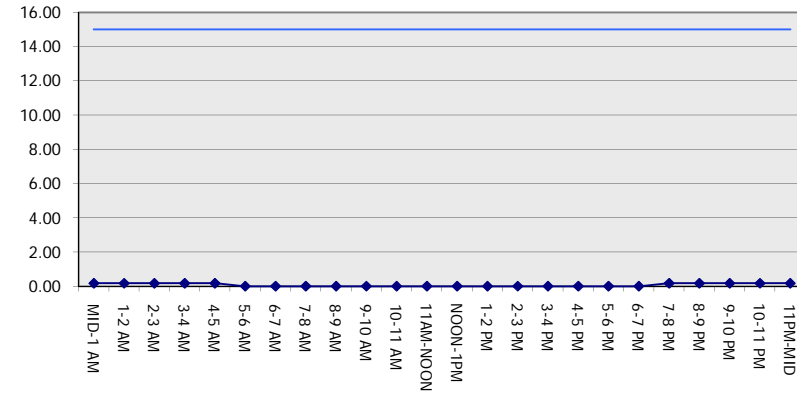
**MON-THUR**

**WESTBOUND DIRECTION**

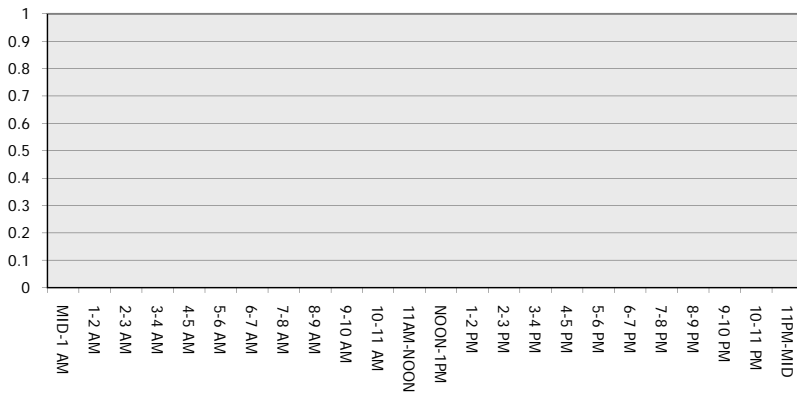
**Main Route - Traffic Demand (Vehicles Per Hour)**



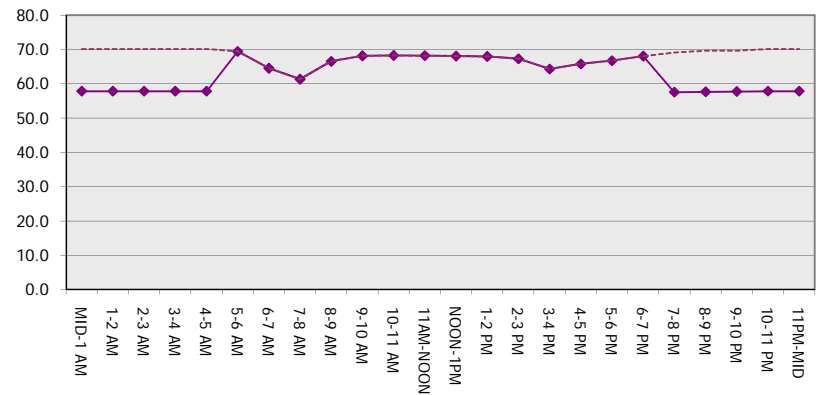
**Main Route Average Delay Per Vehicle (Minutes)**



**Main Route - Average Queue Length (Vehicles)**



**Main Route - Average Speed (MPH)**



<b>IH 94: CTH ZZ/COLLEGE AVE TO CTH BB/RAWSON AVE (MILWAUKEE COUNTY)</b> <b>NIGHTTIME CLOSURE</b> <b>NO DIVERSION ROUTE (MAX QUEUE METHOD)</b>	<b>OCTOBER</b>
	Analyzed for 2009 Construction Season

**SUMMARY OF TRAFFIC MODEL OUTPUT**

MON-THUR                      EASTBOUND DIRECTION

TIME OF DAY	FLOWS AND CAPACITY IN VEH/HR						AVERAGE SPEEDS IN MPH			
	MAIN ROUTE		SITE CAPA CITY	FLOW		AV.DEL PER VEH (MINS)	AVERAGE QUEUE (VEH)	MAIN ROUTE		SITE
	DEMAND FLOW	PCT HEAVY		MAIN ROUTE	'DIVER TED'			WITHOUT WORK ZONE	WITH WORK ZONE	
MID-1 AM	609	0.0	3000	609	0	0.18	0	70.2	57.9	49.7
1-2 AM	447	0.0	3000	447	0	0.18	0	70.2	57.9	49.7
2-3 AM	436	0.0	3000	436	0	0.18	0	70.2	57.9	49.7
3-4 AM	558	0.0	3000	558	0	0.18	0	70.2	57.9	49.7
4-5 AM	1041	0.0	3000	1041	0	0.18	0	70.2	57.9	49.7
5-6 AM	2269	0.0	OFF	2269	0	0.00	0	69.2	69.2	69.2
6-7 AM	3858	0.0	OFF	3858	0	0.00	0	65.8	65.8	65.8
7-8 AM	3494	0.0	OFF	3494	0	0.00	0	67.7	67.7	67.7
8-9 AM	3353	0.0	OFF	3353	0	0.00	0	67.9	67.9	67.9
9-10 AM	2985	0.0	OFF	2985	0	0.00	0	68.3	68.3	68.3
10-11 AM	2860	0.0	OFF	2860	0	0.00	0	68.5	68.5	68.5
11AM-NOON	3065	0.0	OFF	3065	0	0.00	0	68.2	68.2	68.2
NOON-1PM	3307	0.0	OFF	3307	0	0.00	0	67.9	67.9	67.9
1-2 PM	3531	0.0	OFF	3531	0	0.00	0	67.6	67.6	67.6
2-3 PM	4119	0.0	OFF	4119	0	0.00	0	64.0	64.0	64.0
3-4 PM	4547	0.0	OFF	4547	0	0.00	0	61.1	61.1	61.1
4-5 PM	4843	0.0	OFF	4843	0	0.00	0	59.1	59.1	59.1
5-6 PM	4882	0.0	OFF	4882	0	0.00	0	58.8	58.8	58.8
6-7 PM	3810	0.0	OFF	3810	0	0.00	0	66.1	66.1	66.1
7-8 PM	2715	0.0	3000	2715	0	0.29	0	68.7	51.5	41.7
8-9 PM	2199	0.0	3000	2199	0	0.18	0	69.3	57.6	49.7
9-10 PM	1992	0.0	3000	1992	0	0.18	0	69.6	57.7	49.7
10-11 PM	1515	0.0	3000	1515	0	0.18	0	70.2	57.9	49.7
11PM-MID	1039	0.0	3000	1039	0	0.18	0	70.2	57.9	49.7

**"OFF" INDICATES NO ROAD WORK (ALL LANES OPEN TO TRAFFIC)**

*----- SITE BREAKDOWN DELAYS -----*	
BREAKDOWN DURATION (MINS)	0
RANGE OF QUEUE DELAY - MIN (VEH-H) MAX	0.0
AV BREAKDOWNS PER DAY	0.00
AV QUEUE DELAY/DAY (VEH-H)	0.0
AV TOTAL DELAY/DAY (VEH-H)	0.0

*----- SITE ACCIDENT DELAYS -----*	
BREAKDOWN DURATION (MINS)	0
RANGE OF QUEUE DELAY - MIN (VEH-H) MAX	0
AV BREAKDOWNS PER DAY	0
AV QUEUE DELAY/DAY (VEH-H)	0
AV TOTAL DELAY/DAY (VEH-H)	0

AVERAGE ACCIDENT NUMBERS (PIA/DAY)	
MAIN ROUTE WITHOUT WORKS	0.0101
MAIN ROUTE WITH WORKS	0.0087
'DIVERSION'	0.0000

PIA: Personal Injury Accidents

ECONOMIC IMPACT ON ROAD USERS	
ROAD USER COSTS PER DAY	\$507
CONGESTED HOURS PER DAY*	0

\*Delays Exceeding User-Specified Maximum

**IH 94: CTH ZZ/COLLEGE AVE TO CTH BB/RAWSON AVE (MILWAUKEE COUNTY)**  
**NIGHTTIME CLOSURE**  
**NO DIVERSION ROUTE (MAX QUEUE METHOD)**

**OCTOBER**

Analyzed for 2009  
 Construction Season

**GRAPHICAL REPRESENTATION OF TRAFFIC MODEL INPUT AND OUTPUT**  
**MON-THUR EASTBOUND DIRECTION**

