

IH 94: CTH ZZ/COLLEGE AVE TO CTH BB/RAWSON AVE (MILWAUKEE COUNTY) NIGHTTIME 2 LANE CLOSURE NO DIVERSION ROUTE (MAX QUEUE METHOD)	OCTOBER Analyzed for 2009 Construction Season
---	--

SUMMARY OF TRAFFIC MODEL OUTPUT

FRIDAY WESTBOUND DIRECTION

TIME OF DAY	FLOWS AND CAPACITY IN VEH/HR							AVERAGE SPEEDS IN MPH			
	MAIN ROUTE		SITE CAPA CITY	FLOW		AV.DEL PER VEH (MINS)	AVERAGE QUEUE (VEH)	MAIN ROUTE		SITE	
	DEMAND FLOW	PCT HEAVY		MAIN ROUTE	'DIVER TED'			WITHOUT WORK ZONE	WITH WORK ZONE		
MID-1 AM	817	0.0	1499	817	0	1.33	108	70.2	29.1	43.2	
1-2 AM	524	0.0	1500	524	0	0.22	0	70.2	55.8	46.8	
2-3 AM	490	0.0	1500	490	0	0.22	0	70.2	56.0	46.9	
3-4 AM	560	0.0	1500	560	0	0.22	0	70.2	55.7	46.6	
4-5 AM	771	0.0	1500	771	0	0.24	0	70.2	55.0	45.8	
5-6 AM	2109	0.0	OFF	2109	0	0.00	0	69.4	69.4	69.4	
6-7 AM	4067	0.0	OFF	4067	0	0.00	0	64.4	64.4	64.4	
7-8 AM	4537	0.0	OFF	4537	0	0.00	0	61.2	61.2	61.2	
8-9 AM	3821	0.0	OFF	3821	0	0.00	0	66.1	66.1	66.1	
9-10 AM	3340	0.0	OFF	3340	0	0.00	0	67.9	67.9	67.9	
10-11 AM	3512	0.0	OFF	3512	0	0.00	0	67.7	67.7	67.7	
11AM-NOON	3694	0.0	OFF	3694	0	0.00	0	66.9	66.9	66.9	
NOON-1PM	3873	0.0	OFF	3873	0	0.00	0	65.7	65.7	65.7	
1-2 PM	3898	0.0	OFF	3898	0	0.00	0	65.5	65.5	65.5	
2-3 PM	4468	0.0	OFF	4468	0	0.00	0	61.7	61.7	61.7	
3-4 PM	4674	0.0	OFF	4674	0	0.00	0	60.2	60.2	60.2	
4-5 PM	4413	0.0	OFF	4413	0	0.00	0	62.0	62.0	62.0	
5-6 PM	4450	0.0	OFF	4450	0	0.00	0	61.7	61.7	61.7	
6-7 PM	4001	0.0	OFF	4001	0	0.00	0	64.8	64.8	64.8	
7-8 PM	3368	0.0	1499	1590	1779	17.23+	442	67.9	5.4	38.9	
8-9 PM	2688	0.0	1499	1666	1022	15.05+	399	68.7	5.8	37.8	
9-10 PM	2538	0.0	1499	1648	891	16.14+	410	68.9	5.5	32.5	
10-11 PM	2017	0.0	1500	1502	515	16.56+	420	69.6	5.5	32.5	
11PM-MID	1538	0.0	1500	1445	93	15.74+	398	70.1	5.6	32.5	

"OFF" INDICATES NO ROAD WORK (ALL LANES OPEN TO TRAFFIC)

+ INDICATES QUEUEING EXCEEDS USER-SPECIFIED MAXIMUM LIMIT

----- SITE BREAKDOWN DELAYS -----	
BREAKDOWN DURATION (MINS)	0
RANGE OF QUEUE DELAY - MIN (VEH-H) MAX	0.0
AV BREAKDOWNS PER DAY	0.00
AV QUEUE DELAY/DAY (VEH-H)	0.0
AV TOTAL DELAY/DAY (VEH-H)	0.0

----- SITE ACCIDENT DELAYS -----	
BREAKDOWN DURATION (MINS)	0
RANGE OF QUEUE DELAY - MIN (VEH-H) MAX	0
AV BREAKDOWNS PER DAY	0
AV QUEUE DELAY/DAY (VEH-H)	0
AV TOTAL DELAY/DAY (VEH-H)	0

AVERAGE ACCIDENT NUMBERS (PIA/DAY)	
MAIN ROUTE WITHOUT WORKS	0.0112
MAIN ROUTE WITH WORKS	0.0093
'DIVERSION'	0.0016
<small>PIA: Personal Injury Accidents</small>	
IMPACTS ON ROAD USERS	
ROAD USER COSTS PER DAY	\$47,254
CONGESTED HOURS PER DAY*	5

*Delays Exceeding User-Specified Maximum

IH 94: CTH ZZ/COLLEGE AVE TO CTH BB/RAWSON AVE (MILWAUKEE COUNTY)
NIGHTTIME 2 LANE CLOSURE
NO DIVERSION ROUTE (MAX QUEUE METHOD)

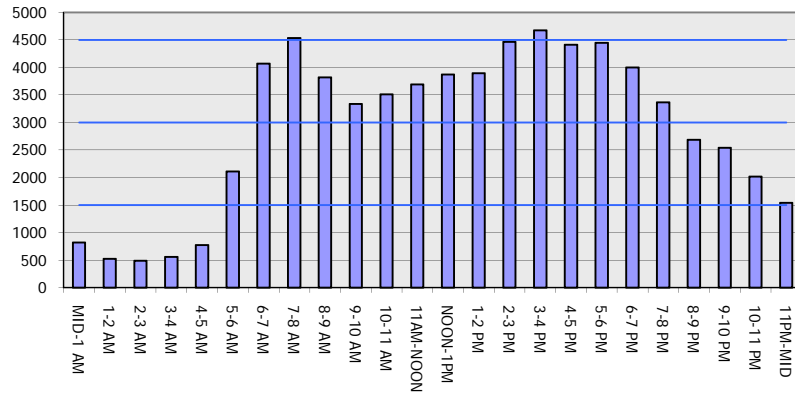
OCTOBER

Analyzed for 2009
 Construction Season

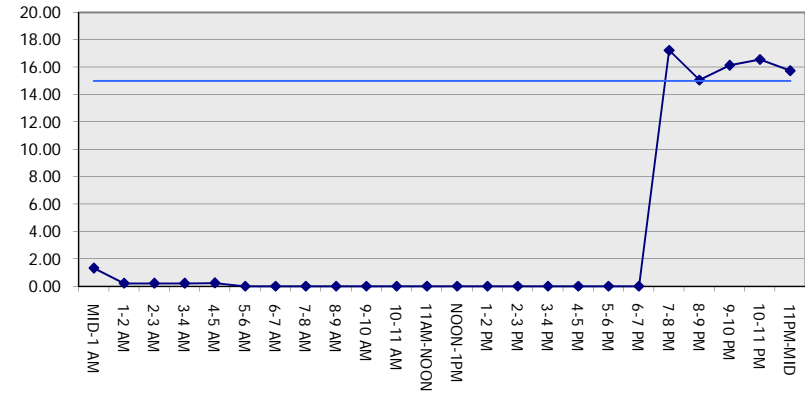
GRAPHICAL REPRESENTATION OF TRAFFIC MODEL INPUT AND OUTPUT

FRIDAY WESTBOUND DIRECTION

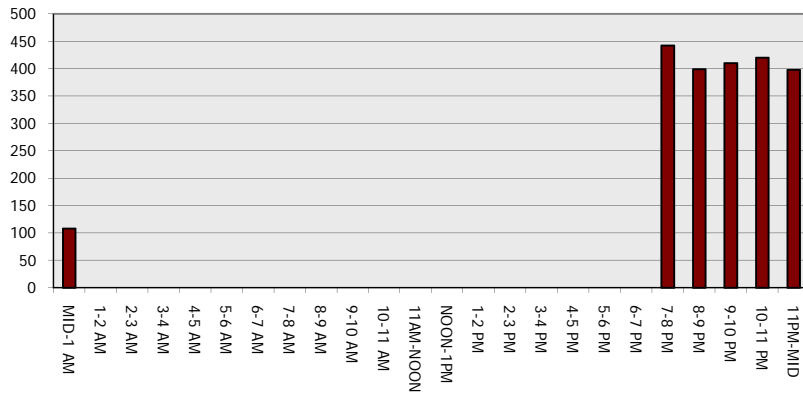
Main Route - Traffic Demand (Vehicles Per Hour)



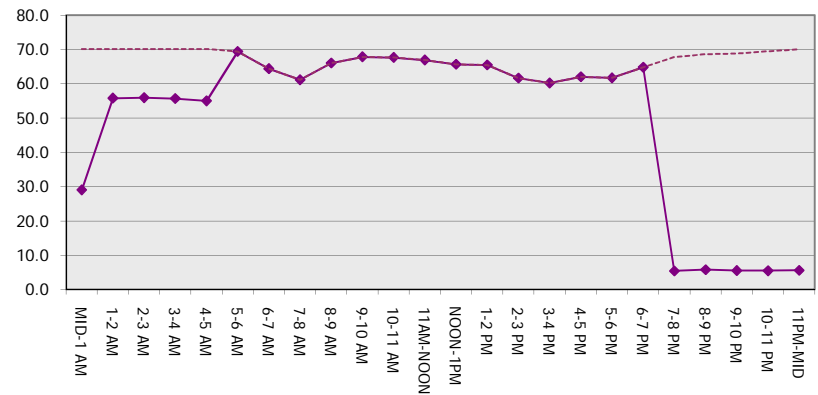
Main Route Average Delay Per Vehicle (Minutes)



Main Route - Average Queue Length (Vehicles)



Main Route - Average Speed (MPH)



IH 94: CTH ZZ/COLLEGE AVE TO CTH BB/RAWSON AVE (MILWAUKEE COUNTY) NIGHTTIME 2 LANE CLOSURE NO DIVERSION ROUTE (MAX QUEUE METHOD)	OCTOBER
	Analyzed for 2009 Construction Season

SUMMARY OF TRAFFIC MODEL OUTPUT

FRIDAY EASTBOUND DIRECTION

TIME OF DAY	FLOWS AND CAPACITY IN VEH/HR							AVERAGE SPEEDS IN MPH			
	MAIN ROUTE		SITE CAPA CITY	FLOW		AV.DEL PER VEH (MINS)	AVERAGE QUEUE (VEH)	MAIN ROUTE		SITE	
	DEMAND FLOW	PCT HEAVY		MAIN ROUTE	'DIVER TED'			WITHOUT WORK ZONE	WITH WORK ZONE		
MID-1 AM	713	0.0	1500	713	0	0.78	58	70.2	37.3	45.6	
1-2 AM	524	0.0	1500	524	0	0.22	0	70.2	55.8	46.8	
2-3 AM	509	0.0	1500	509	0	0.22	0	70.2	55.9	46.9	
3-4 AM	666	0.0	1500	666	0	0.23	0	70.2	55.3	46.2	
4-5 AM	1096	0.0	1499	1096	0	0.30	0	70.2	51.8	41.7	
5-6 AM	2196	0.0	OFF	2196	0	0.00	0	69.3	69.3	69.3	
6-7 AM	3706	0.0	OFF	3706	0	0.00	0	66.8	66.8	66.8	
7-8 AM	3665	0.0	OFF	3665	0	0.00	0	67.1	67.1	67.1	
8-9 AM	3240	0.0	OFF	3240	0	0.00	0	68.0	68.0	68.0	
9-10 AM	3078	0.0	OFF	3078	0	0.00	0	68.2	68.2	68.2	
10-11 AM	3151	0.0	OFF	3151	0	0.00	0	68.1	68.1	68.1	
11AM-NOON	3397	0.0	OFF	3397	0	0.00	0	67.8	67.8	67.8	
NOON-1PM	3706	0.0	OFF	3706	0	0.00	0	66.8	66.8	66.8	
1-2 PM	3960	0.0	OFF	3960	0	0.00	0	65.1	65.1	65.1	
2-3 PM	4536	0.0	OFF	4536	0	0.00	0	61.2	61.2	61.2	
3-4 PM	4808	0.0	OFF	4808	0	0.00	0	59.3	59.3	59.3	
4-5 PM	5164	0.0	OFF	5164	0	0.00	0	56.9	56.9	56.9	
5-6 PM	5050	0.0	OFF	5050	0	0.00	0	57.6	57.6	57.6	
6-7 PM	3979	0.0	OFF	3979	0	0.00	0	65.0	65.0	65.0	
7-8 PM	2990	0.0	1499	1588	1402	17.20+	441	68.3	5.4	38.9	
8-9 PM	2328	0.0	1499	1818	511	13.85+	363	69.1	6.0	33.5	
9-10 PM	2260	0.0	1499	1502	758	16.58+	420	69.2	5.5	32.5	
10-11 PM	1872	0.0	1500	1501	371	16.56+	419	69.7	5.5	32.5	
11PM-MID	1372	0.0	1500	1372	0	15.03+	381	70.2	5.7	32.5	

"OFF" INDICATES NO ROAD WORK (ALL LANES OPEN TO TRAFFIC)

+ INDICATES QUEUEING EXCEEDS USER-SPECIFIED MAXIMUM LIMIT

----- SITE BREAKDOWN DELAYS -----	
BREAKDOWN DURATION (MINS)	0
RANGE OF QUEUE DELAY - MIN (VEH-H) MAX	0.0
AV BREAKDOWNS PER DAY	0.00
AV QUEUE DELAY/DAY (VEH-H)	0.0
AV TOTAL DELAY/DAY (VEH-H)	0.0

----- SITE ACCIDENT DELAYS -----	
BREAKDOWN DURATION (MINS)	0
RANGE OF QUEUE DELAY - MIN (VEH-H) MAX	0
AV BREAKDOWNS PER DAY	0
AV QUEUE DELAY/DAY (VEH-H)	0
AV TOTAL DELAY/DAY (VEH-H)	0

AVERAGE ACCIDENT NUMBERS (PIA/DAY)	
MAIN ROUTE WITHOUT WORKS	0.0108
MAIN ROUTE WITH WORKS	0.0091
'DIVERSION'	0.0011

PIA: Personal Injury Accidents

ECONOMIC IMPACT ON ROAD USERS	
ROAD USER COSTS PER DAY	\$41,392
CONGESTED HOURS PER DAY*	5

*Delays Exceeding User-Specified Maximum

IH 94: CTH ZZ/COLLEGE AVE TO CTH BB/RAWSON AVE (MILWAUKEE COUNTY)
NIGHTTIME 2 LANE CLOSURE
NO DIVERSION ROUTE (MAX QUEUE METHOD)

OCTOBER

Analyzed for 2009
 Construction Season

GRAPHICAL REPRESENTATION OF TRAFFIC MODEL INPUT AND OUTPUT
FRIDAY EASTBOUND DIRECTION

