

IH 94: CTH ZZ/COLLEGE AVE TO CTH BB/RAWSON AVE (MILWAUKEE COUNTY) NIGHTTIME CLOSURE NO DIVERSION ROUTE (MAX QUEUE METHOD)	OCTOBER
	Analyzed for 2009 Construction Season

SUMMARY OF TRAFFIC MODEL OUTPUT

FRIDAY WESTBOUND DIRECTION

TIME OF DAY	FLOWS AND CAPACITY IN VEH/HR						AVERAGE SPEEDS IN MPH				
	MAIN ROUTE		SITE CAPA CITY	FLOW		AV.DEL PER VEH (MINS)	AVERAGE QUEUE (VEH)	MAIN ROUTE		SITE	
	DEMAND FLOW	PCT HEAVY		MAIN ROUTE	'DIVER TED'			WITHOUT WORK ZONE	WITH WORK ZONE		
MID-1 AM	817	0.0	3000	817	0	0.18	0	70.2	57.9	49.7	
1-2 AM	524	0.0	3000	524	0	0.18	0	70.2	57.9	49.7	
2-3 AM	490	0.0	3000	490	0	0.18	0	70.2	57.9	49.7	
3-4 AM	560	0.0	3000	560	0	0.18	0	70.2	57.9	49.7	
4-5 AM	771	0.0	3000	771	0	0.18	0	70.2	57.9	49.7	
5-6 AM	2109	0.0	OFF	2109	0	0.00	0	69.4	69.4	69.4	
6-7 AM	4067	0.0	OFF	4067	0	0.00	0	64.4	64.4	64.4	
7-8 AM	4537	0.0	OFF	4537	0	0.00	0	61.2	61.2	61.2	
8-9 AM	3821	0.0	OFF	3821	0	0.00	0	66.1	66.1	66.1	
9-10 AM	3340	0.0	OFF	3340	0	0.00	0	67.9	67.9	67.9	
10-11 AM	3512	0.0	OFF	3512	0	0.00	0	67.7	67.7	67.7	
11AM-NOON	3694	0.0	OFF	3694	0	0.00	0	66.9	66.9	66.9	
NOON-1PM	3873	0.0	OFF	3873	0	0.00	0	65.7	65.7	65.7	
1-2 PM	3898	0.0	OFF	3898	0	0.00	0	65.5	65.5	65.5	
2-3 PM	4468	0.0	OFF	4468	0	0.00	0	61.7	61.7	61.7	
3-4 PM	4674	0.0	OFF	4674	0	0.00	0	60.2	60.2	60.2	
4-5 PM	4413	0.0	OFF	4413	0	0.00	0	62.0	62.0	62.0	
5-6 PM	4450	0.0	OFF	4450	0	0.00	0	61.7	61.7	61.7	
6-7 PM	4001	0.0	OFF	4001	0	0.00	0	64.8	64.8	64.8	
7-8 PM	3368	0.0	2999	3368	0	4.13	225	67.9	14.1	36.9	
8-9 PM	2688	0.0	2999	2688	0	4.39	238	68.7	13.7	38.3	
9-10 PM	2538	0.0	3000	2538	0	0.28	4	68.9	51.9	45.3	
10-11 PM	2017	0.0	3000	2017	0	0.18	0	69.6	57.6	49.7	
11PM-MID	1538	0.0	3000	1538	0	0.18	0	70.1	57.9	49.7	

"OFF" INDICATES NO ROAD WORK (ALL LANES OPEN TO TRAFFIC)

----- SITE BREAKDOWN DELAYS -----	
BREAKDOWN DURATION (MINS)	0
RANGE OF QUEUE DELAY - MIN (VEH-H) MAX	0.0
AV BREAKDOWNS PER DAY	0.00
AV QUEUE DELAY/DAY (VEH-H)	0.0
AV TOTAL DELAY/DAY (VEH-H)	0.0

----- SITE ACCIDENT DELAYS -----	
BREAKDOWN DURATION (MINS)	0
RANGE OF QUEUE DELAY - MIN (VEH-H) MAX	0
AV BREAKDOWNS PER DAY	0
AV QUEUE DELAY/DAY (VEH-H)	0
AV TOTAL DELAY/DAY (VEH-H)	0

AVERAGE ACCIDENT NUMBERS (PIA/DAY)	
MAIN ROUTE WITHOUT WORKS	0.0112
MAIN ROUTE WITH WORKS	0.0095
'DIVERSION'	0.0000
<small>PIA: Personal Injury Accidents</small>	
IMPACTS ON ROAD USERS	
ROAD USER COSTS PER DAY	\$6,823
CONGESTED HOURS PER DAY*	0

*Delays Exceeding User-Specified Maximum

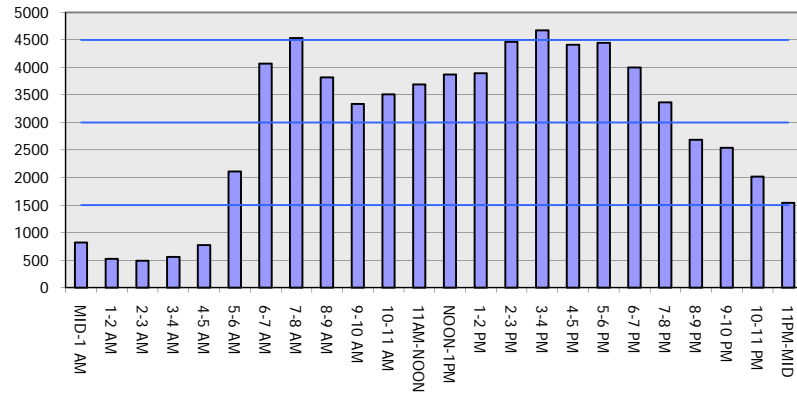
IH 94: CTH ZZ/COLLEGE AVE TO CTH BB/RAWSON AVE (MILWAUKEE COUNTY)
NIGHTTIME CLOSURE
NO DIVERSION ROUTE (MAX QUEUE METHOD)

OCTOBER

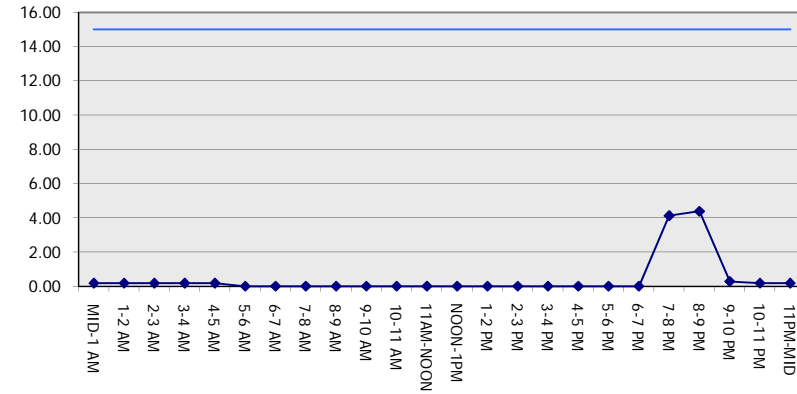
Analyzed for 2009
 Construction Season

GRAPHICAL REPRESENTATION OF TRAFFIC MODEL INPUT AND OUTPUT
FRIDAY WESTBOUND DIRECTION

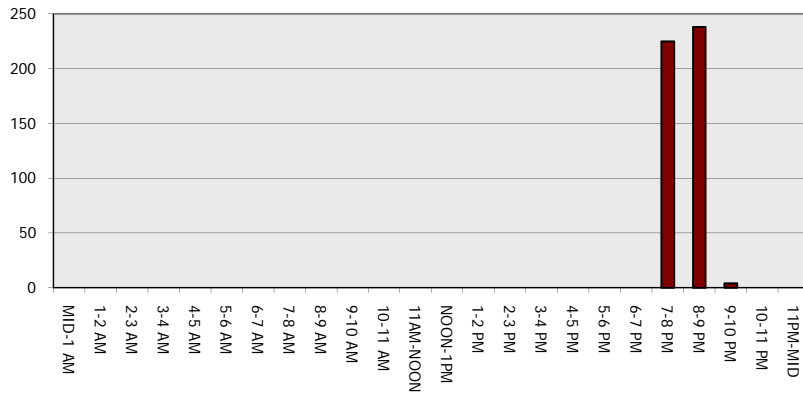
Main Route - Traffic Demand (Vehicles Per Hour)



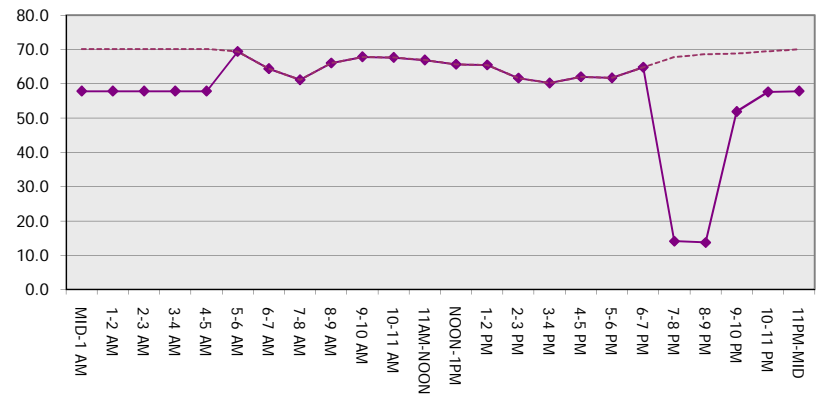
Main Route Average Delay Per Vehicle (Minutes)



Main Route - Average Queue Length (Vehicles)



Main Route - Average Speed (MPH)



IH 94: CTH ZZ/COLLEGE AVE TO CTH BB/RAWSON AVE (MILWAUKEE COUNTY) NIGHTTIME CLOSURE NO DIVERSION ROUTE (MAX QUEUE METHOD)	OCTOBER
	Analyzed for 2009 Construction Season

SUMMARY OF TRAFFIC MODEL OUTPUT

FRIDAY EASTBOUND DIRECTION

TIME OF DAY	FLOWS AND CAPACITY IN VEH/HR						AVERAGE SPEEDS IN MPH			
	MAIN ROUTE		SITE CAPA CITY	FLOW		AV.DEL PER VEH (MINS)	AVERAGE QUEUE (VEH)	MAIN ROUTE		SITE
	DEMAND FLOW	PCT HEAVY		MAIN ROUTE	'DIVER TED'			WITHOUT WORK ZONE	WITH WORK ZONE	
MID-1 AM	713	0.0	3000	713	0	0.18	0	70.2	57.9	49.7
1-2 AM	524	0.0	3000	524	0	0.18	0	70.2	57.9	49.7
2-3 AM	509	0.0	3000	509	0	0.18	0	70.2	57.9	49.7
3-4 AM	666	0.0	3000	666	0	0.18	0	70.2	57.9	49.7
4-5 AM	1096	0.0	3000	1096	0	0.18	0	70.2	57.9	49.7
5-6 AM	2196	0.0	OFF	2196	0	0.00	0	69.3	69.3	69.3
6-7 AM	3706	0.0	OFF	3706	0	0.00	0	66.8	66.8	66.8
7-8 AM	3665	0.0	OFF	3665	0	0.00	0	67.1	67.1	67.1
8-9 AM	3240	0.0	OFF	3240	0	0.00	0	68.0	68.0	68.0
9-10 AM	3078	0.0	OFF	3078	0	0.00	0	68.2	68.2	68.2
10-11 AM	3151	0.0	OFF	3151	0	0.00	0	68.1	68.1	68.1
11AM-NOON	3397	0.0	OFF	3397	0	0.00	0	67.8	67.8	67.8
NOON-1PM	3706	0.0	OFF	3706	0	0.00	0	66.8	66.8	66.8
1-2 PM	3960	0.0	OFF	3960	0	0.00	0	65.1	65.1	65.1
2-3 PM	4536	0.0	OFF	4536	0	0.00	0	61.2	61.2	61.2
3-4 PM	4808	0.0	OFF	4808	0	0.00	0	59.3	59.3	59.3
4-5 PM	5164	0.0	OFF	5164	0	0.00	0	56.9	56.9	56.9
5-6 PM	5050	0.0	OFF	5050	0	0.00	0	57.6	57.6	57.6
6-7 PM	3979	0.0	OFF	3979	0	0.00	0	65.0	65.0	65.0
7-8 PM	2990	0.0	2999	2990	0	1.18	47	68.3	29.2	37.9
8-9 PM	2328	0.0	3000	2328	0	0.18	0	69.1	57.5	49.7
9-10 PM	2260	0.0	3000	2260	0	0.18	0	69.2	57.6	49.7
10-11 PM	1872	0.0	3000	1872	0	0.18	0	69.7	57.7	49.7
11PM-MID	1372	0.0	3000	1372	0	0.18	0	70.2	57.9	49.7

"OFF" INDICATES NO ROAD WORK (ALL LANES OPEN TO TRAFFIC)

----- SITE BREAKDOWN DELAYS -----	
BREAKDOWN DURATION (MINS)	0
RANGE OF QUEUE DELAY - MIN (VEH-H) MAX	0.0
AV BREAKDOWNS PER DAY	0.00
AV QUEUE DELAY/DAY (VEH-H)	0.0
AV TOTAL DELAY/DAY (VEH-H)	0.0

----- SITE ACCIDENT DELAYS -----	
BREAKDOWN DURATION (MINS)	0
RANGE OF QUEUE DELAY - MIN (VEH-H) MAX	0
AV BREAKDOWNS PER DAY	0
AV QUEUE DELAY/DAY (VEH-H)	0
AV TOTAL DELAY/DAY (VEH-H)	0

AVERAGE ACCIDENT NUMBERS (PIA/DAY)	
MAIN ROUTE WITHOUT WORKS	0.0108
MAIN ROUTE WITH WORKS	0.0093
'DIVERSION'	0.0000

PIA: Personal Injury Accidents

ECONOMIC IMPACT ON ROAD USERS	
ROAD USER COSTS PER DAY	\$1,375
CONGESTED HOURS PER DAY*	0

*Delays Exceeding User-Specified Maximum

IH 94: CTH ZZ/COLLEGE AVE TO CTH BB/RAWSON AVE (MILWAUKEE COUNTY)
NIGHTTIME CLOSURE
NO DIVERSION ROUTE (MAX QUEUE METHOD)

OCTOBER

Analyzed for 2009
 Construction Season

GRAPHICAL REPRESENTATION OF TRAFFIC MODEL INPUT AND OUTPUT
FRIDAY EASTBOUND DIRECTION

