

<b>IH 94: CTH ZZ/COLLEGE AVE TO CTH BB/RAWSON AVE (MILWAUKEE COUNTY)</b> <b>NIGHTTIME 2 LANE CLOSURE</b> <b>NO DIVERSION ROUTE (MAX QUEUE METHOD)</b>	<b>MAY</b>
	Analyzed for 2009 Construction Season

**SUMMARY OF TRAFFIC MODEL OUTPUT**

SUNDAY WESTBOUND DIRECTION

TIME OF DAY	FLOWS AND CAPACITY IN VEH/HR						AVERAGE SPEEDS IN MPH				
	MAIN ROUTE		SITE CAPA CITY	FLOW		AV.DEL PER VEH (MINS)	AVERAGE QUEUE (VEH)	MAIN ROUTE		SITE	
	DEMAND FLOW	PCT HEAVY		MAIN ROUTE	'DIVER TED'			WITHOUT WORK ZONE	WITH WORK ZONE		
MID-1 AM	967	0.0	1500	967	0	0.25	0	70.2	54.4	45.0	
1-2 AM	559	0.0	1500	559	0	0.22	0	70.2	55.7	46.6	
2-3 AM	413	0.0	1500	413	0	0.21	0	70.2	56.2	47.3	
3-4 AM	284	0.0	1500	284	0	0.20	0	70.2	56.6	47.9	
4-5 AM	288	0.0	1500	288	0	0.21	0	70.2	56.6	47.9	
5-6 AM	452	0.0	1500	452	0	0.22	0	70.2	56.1	47.1	
6-7 AM	775	0.0	1500	775	0	0.24	0	70.2	55.0	45.7	
7-8 AM	1002	0.0	1499	1002	0	0.25	0	70.2	54.3	44.8	
8-9 AM	1493	0.0	1499	1493	0	0.84	15	70.2	35.4	34.2	
9-10 AM	2030	0.0	OFF	2030	0	0.01	0	69.5	69.1	69.1	
10-11 AM	2648	0.0	OFF	2648	0	0.00	0	68.7	68.7	68.7	
11AM-NOON	3233	0.0	OFF	3233	0	0.00	0	68.0	68.0	68.0	
NOON-1PM	3531	0.0	OFF	3531	0	0.00	0	67.6	67.6	67.6	
1-2 PM	3339	0.0	OFF	3339	0	0.00	0	67.9	67.9	67.9	
2-3 PM	3202	0.0	OFF	3202	0	0.00	0	68.1	68.1	68.1	
3-4 PM	3540	0.0	OFF	3540	0	0.00	0	67.6	67.6	67.6	
4-5 PM	3495	0.0	OFF	3495	0	0.00	0	67.7	67.7	67.7	
5-6 PM	3281	0.0	OFF	3281	0	0.00	0	67.9	67.9	67.9	
6-7 PM	2941	0.0	OFF	2941	0	0.00	0	68.4	68.4	68.4	
7-8 PM	2737	0.0	1499	1781	956	14.42+	371	68.6	5.8	37.3	
8-9 PM	2287	0.0	1499	1617	670	16.15+	410	69.2	5.5	32.5	
9-10 PM	2039	0.0	1500	1503	537	16.56+	420	69.5	5.5	32.5	
10-11 PM	1517	0.0	1500	1440	77	15.61+	395	70.2	5.6	32.5	
11PM-MID	921	0.0	1499	921	0	1.49	112	70.2	27.2	42.1	

"OFF" INDICATES NO ROAD WORK (ALL LANES OPEN TO TRAFFIC)

+ INDICATES QUEUEING EXCEEDS USER-SPECIFIED MAXIMUM LIMIT

*----- SITE BREAKDOWN DELAYS -----*	
BREAKDOWN DURATION (MINS)	0
RANGE OF QUEUE DELAY - MIN (VEH-H) MAX	0.0
AV BREAKDOWNS PER DAY	0.00
AV QUEUE DELAY/DAY (VEH-H)	0.0
AV TOTAL DELAY/DAY (VEH-H)	0.0

*----- SITE ACCIDENT DELAYS -----*	
BREAKDOWN DURATION (MINS)	0
RANGE OF QUEUE DELAY - MIN (VEH-H) MAX	0
AV BREAKDOWNS PER DAY	0
AV QUEUE DELAY/DAY (VEH-H)	0
AV TOTAL DELAY/DAY (VEH-H)	0

AVERAGE ACCIDENT NUMBERS (PIA/DAY)	
MAIN ROUTE WITHOUT WORKS	0.0075
MAIN ROUTE WITH WORKS	0.0057
'DIVERSION'	0.0008
PIA: Personal Injury Accidents	
IMPACTS ON ROAD USERS	
ROAD USER COSTS PER DAY	\$36,247
CONGESTED HOURS PER DAY*	4

\*Delays Exceeding User-Specified Maximum

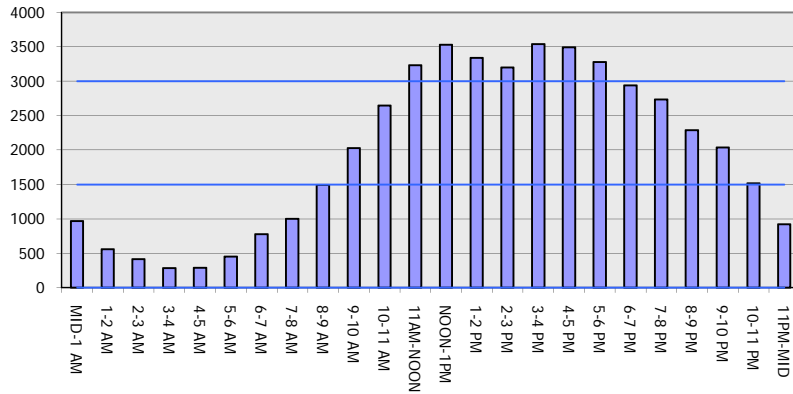
**IH 94: CTH ZZ/COLLEGE AVE TO CTH BB/RAWSON AVE (MILWAUKEE COUNTY)**  
**NIGHTTIME 2 LANE CLOSURE**  
**NO DIVERSION ROUTE (MAX QUEUE METHOD)**

**MAY**  
 Analyzed for 2009  
 Construction Season

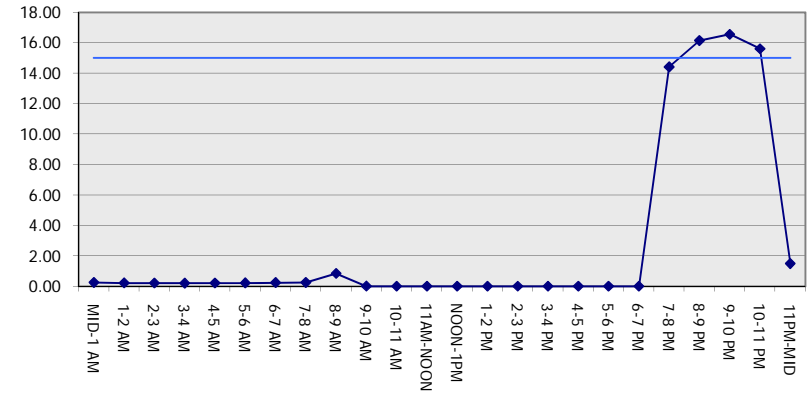
**GRAPHICAL REPRESENTATION OF TRAFFIC MODEL INPUT AND OUTPUT**

**SUNDAY WESTBOUND DIRECTION**

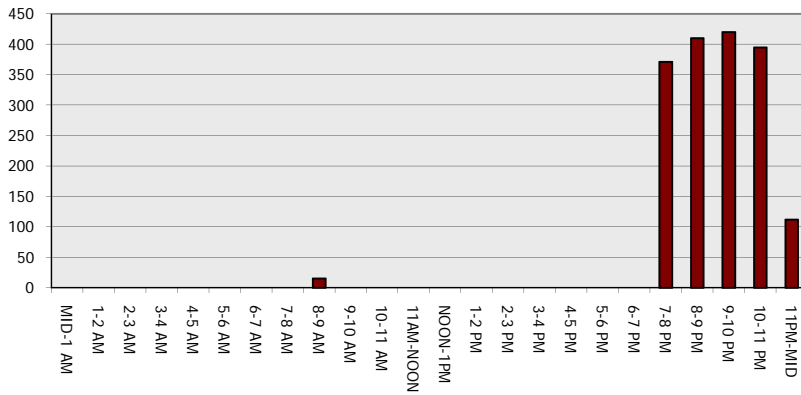
**Main Route - Traffic Demand (Vehicles Per Hour)**



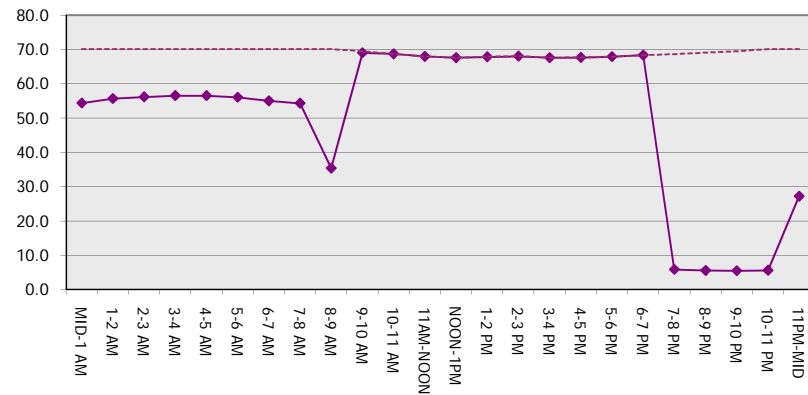
**Main Route Average Delay Per Vehicle (Minutes)**



**Main Route - Average Queue Length (Vehicles)**



**Main Route - Average Speed (MPH)**



<b>IH 94: CTH ZZ/COLLEGE AVE TO CTH BB/RAWSON AVE (MILWAUKEE COUNTY)</b> <b>NIGHTTIME 2 LANE CLOSURE</b> <b>NO DIVERSION ROUTE (MAX QUEUE METHOD)</b>	<b>MAY</b>
	Analyzed for 2009 Construction Season

**SUMMARY OF TRAFFIC MODEL OUTPUT**

SUNDAY EASTBOUND DIRECTION

TIME OF DAY	FLOWS AND CAPACITY IN VEH/HR						AVERAGE SPEEDS IN MPH			
	MAIN ROUTE		SITE CAPA CITY	FLOW		AV.DEL PER VEH (MINS)	AVERAGE QUEUE (VEH)	MAIN ROUTE		SITE
	DEMAND FLOW	PCT HEAVY		MAIN ROUTE	'DIVER TED'			WITHOUT WORK ZONE	WITH WORK ZONE	
MID-1 AM	867	0.0	1500	867	0	0.24	0	70.2	54.7	45.3
1-2 AM	618	0.0	1500	618	0	0.23	0	70.2	55.5	46.4
2-3 AM	630	0.0	1500	630	0	0.23	0	70.2	55.5	46.3
3-4 AM	449	0.0	1500	449	0	0.22	0	70.2	56.1	47.1
4-5 AM	429	0.0	1500	429	0	0.21	0	70.2	56.1	47.3
5-6 AM	682	0.0	1500	682	0	0.23	0	70.2	55.3	46.1
6-7 AM	935	0.0	1500	935	0	0.25	0	70.2	54.5	45.1
7-8 AM	1162	0.0	1499	1162	0	0.30	0	70.2	52.0	41.9
8-9 AM	1638	0.0	1499	1638	0	1.19	36	70.0	29.3	32.7
9-10 AM	2424	0.0	OFF	2424	0	0.03	3	69.1	66.5	66.5
10-11 AM	2948	0.0	OFF	2948	0	0.00	0	68.4	68.4	68.4
11AM-NOON	3469	0.0	OFF	3469	0	0.00	0	67.8	67.8	67.8
NOON-1PM	3879	0.0	OFF	3879	0	0.00	0	65.6	65.6	65.6
1-2 PM	3923	0.0	OFF	3923	0	0.00	0	65.3	65.3	65.3
2-3 PM	3981	0.0	OFF	3981	0	0.00	0	65.0	65.0	65.0
3-4 PM	3938	0.0	OFF	3938	0	0.00	0	65.3	65.3	65.3
4-5 PM	4059	0.0	OFF	4059	0	0.00	0	64.5	64.5	64.5
5-6 PM	3607	0.0	OFF	3607	0	0.00	0	67.5	67.5	67.5
6-7 PM	3129	0.0	OFF	3129	0	0.00	0	68.1	68.1	68.1
7-8 PM	2729	0.0	1499	1771	958	14.46+	372	68.6	5.8	37.4
8-9 PM	2332	0.0	1499	1631	700	16.11+	409	69.1	5.5	32.5
9-10 PM	1852	0.0	1500	1502	350	16.55+	419	69.7	5.5	32.5
10-11 PM	1396	0.0	1500	1396	0	15.13+	383	70.2	5.7	32.5
11PM-MID	854	0.0	1499	854	0	1.04	77	70.2	32.5	44.2

"OFF" INDICATES NO ROAD WORK (ALL LANES OPEN TO TRAFFIC)

+ INDICATES QUEUEING EXCEEDS USER-SPECIFIED MAXIMUM LIMIT

BREAKDOWN DURATION (MINS)	0
RANGE OF QUEUE DELAY - MIN (VEH-H) MAX	0.0
AV BREAKDOWNS PER DAY	0.00
AV QUEUE DELAY/DAY (VEH-H)	0.0
AV TOTAL DELAY/DAY (VEH-H)	0.0

BREAKDOWN DURATION (MINS)	0
RANGE OF QUEUE DELAY - MIN (VEH-H) MAX	0
AV BREAKDOWNS PER DAY	0
AV QUEUE DELAY/DAY (VEH-H)	0
AV TOTAL DELAY/DAY (VEH-H)	0

MAIN ROUTE WITHOUT WORKS	0.0083
MAIN ROUTE WITH WORKS	0.0064
'DIVERSION'	0.0007

PIA: Personal Injury Accidents

ROAD USER COSTS PER DAY	\$35,071
CONGESTED HOURS PER DAY*	4

\*Delays Exceeding User-Specified Maximum

**IH 94: CTH ZZ/COLLEGE AVE TO CTH BB/RAWSON AVE (MILWAUKEE COUNTY)**  
**NIGHTTIME 2 LANE CLOSURE**  
**NO DIVERSION ROUTE (MAX QUEUE METHOD)**

**MAY**  
 Analyzed for 2009  
 Construction Season

**GRAPHICAL REPRESENTATION OF TRAFFIC MODEL INPUT AND OUTPUT**  
**SUNDAY EASTBOUND DIRECTION**

