

USH 45: CTH E TO STH 190 (MILWAUKEE COUNTY) NIGHTTIME 2 LANE CLOSURE NO DIVERSION ROUTE (MAX QUEUE METHOD)	OCTOBER
	Analyzed for 2009 Construction Season

SUMMARY OF TRAFFIC MODEL OUTPUT

SATURDAY SOUTHBOUND DIRECTION

TIME OF DAY	FLOWS AND CAPACITY IN VEH/HR						AVERAGE SPEEDS IN MPH			
	MAIN ROUTE		SITE CAPA CITY	FLOW		AV.DEL PER VEH (MINS)	AVERAGE QUEUE (VEH)	MAIN ROUTE		SITE
	DEMAND FLOW	PCT HEAVY		MAIN ROUTE	'DIVER TED'			WITHOUT WORK ZONE	WITH WORK ZONE	
MID-1 AM	898	0.0	1500	898	0	1.52	54	69.6	36.1	40.8
1-2 AM	490	0.0	1500	490	0	0.53	0	70.1	52.8	43.5
2-3 AM	478	0.0	1500	478	0	0.53	0	70.1	52.9	43.6
3-4 AM	349	0.0	1500	349	0	0.52	0	70.2	53.3	44.1
4-5 AM	474	0.0	1500	474	0	0.53	0	70.2	52.9	43.6
5-6 AM	904	0.0	1499	904	0	0.58	0	69.6	51.5	42.0
6-7 AM	1841	0.0	1499	1841	0	4.23	121	68.4	19.4	30.8
7-8 AM	2479	0.0	1499	1524	955	17.00+	417	67.6	7.3	30.9
8-9 AM	3288	0.0	OFF	3288	0	0.26	24	66.6	57.7	57.7
9-10 AM	3453	0.0	OFF	3453	0	0.00	0	66.4	66.4	66.4
10-11 AM	4021	0.0	OFF	4021	0	0.00	0	63.4	63.4	63.4
11AM-NOON	4624	0.0	OFF	4624	0	0.00	0	59.2	59.2	59.2
NOON-1PM	4715	0.0	OFF	4715	0	0.00	0	58.6	58.6	58.6
1-2 PM	4375	0.0	OFF	4375	0	0.00	0	61.0	61.0	61.0
2-3 PM	4620	0.0	OFF	4620	0	0.00	0	59.3	59.3	59.3
3-4 PM	4450	0.0	OFF	4450	0	0.00	0	60.4	60.4	60.4
4-5 PM	4703	0.0	OFF	4703	0	0.00	0	58.7	58.7	58.7
5-6 PM	4103	0.0	OFF	4103	0	0.00	0	62.8	62.8	62.8
6-7 PM	3878	0.0	1499	1580	2298	17.29+	434	64.3	7.3	36.5
7-8 PM	2974	0.0	1499	1684	1290	15.11+	391	67.1	8.0	35.5
8-9 PM	2190	0.0	1499	1661	528	16.32+	400	68.0	7.5	30.8
9-10 PM	2123	0.0	1499	1499	624	16.91+	414	68.1	7.3	30.8
10-11 PM	1890	0.0	1499	1499	391	16.91+	414	68.4	7.3	30.8
11PM-MID	1311	0.0	1499	1311	1	14.63+	359	69.1	8.0	30.8

"OFF" INDICATES NO ROAD WORK (ALL LANES OPEN TO TRAFFIC)

+ INDICATES QUEUEING EXCEEDS USER-SPECIFIED MAXIMUM LIMIT

----- SITE BREAKDOWN DELAYS -----	
BREAKDOWN DURATION (MINS)	0
RANGE OF QUEUE DELAY - MIN (VEH-H) MAX	0.0
AV BREAKDOWNS PER DAY	0.00
AV QUEUE DELAY/DAY (VEH-H)	0.0
AV TOTAL DELAY/DAY (VEH-H)	0.0

----- SITE ACCIDENT DELAYS -----	
BREAKDOWN DURATION (MINS)	0
RANGE OF QUEUE DELAY - MIN (VEH-H) MAX	0
AV BREAKDOWNS PER DAY	0
AV QUEUE DELAY/DAY (VEH-H)	0
AV TOTAL DELAY/DAY (VEH-H)	0

AVERAGE ACCIDENT NUMBERS (PIA/DAY)	
MAIN ROUTE WITHOUT WORKS	0.0196
MAIN ROUTE WITH WORKS	0.0166
'DIVERSION'	0.0043
PIA: Personal Injury Accidents	
IMPACTS ON ROAD USERS	
ROAD USER COSTS PER DAY	\$72,726
CONGESTED HOURS PER DAY*	7

*Delays Exceeding User-Specified Maximum

**USH 45: CTH E TO STH 190 (MILWAUKEE COUNTY)
 NIGHTTIME 2 LANE CLOSURE
 NO DIVERSION ROUTE (MAX QUEUE METHOD)**

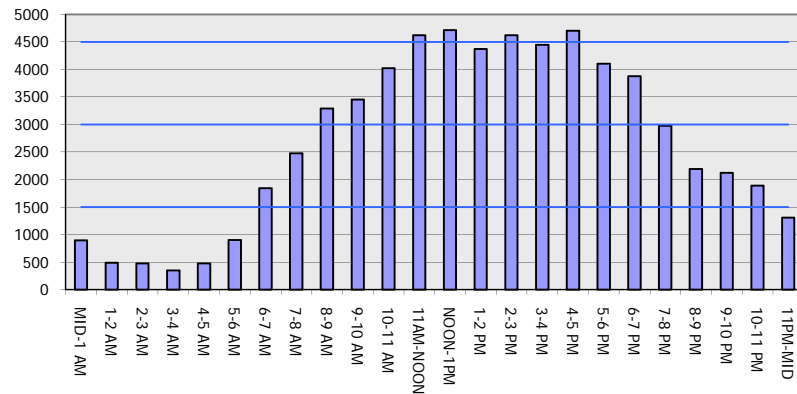
OCTOBER

Analyzed for 2009
 Construction Season

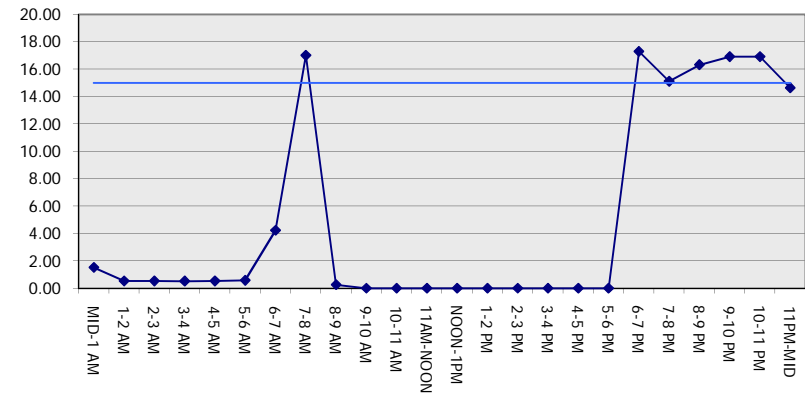
GRAPHICAL REPRESENTATION OF TRAFFIC MODEL INPUT AND OUTPUT

SATURDAY SOUTHBOUND DIRECTION

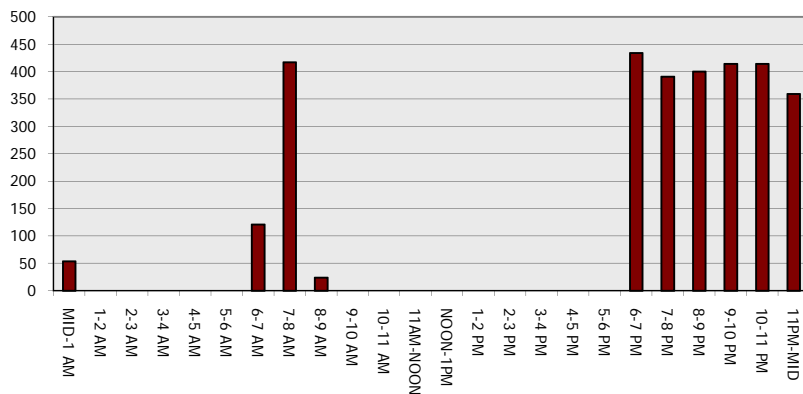
Main Route - Traffic Demand (Vehicles Per Hour)



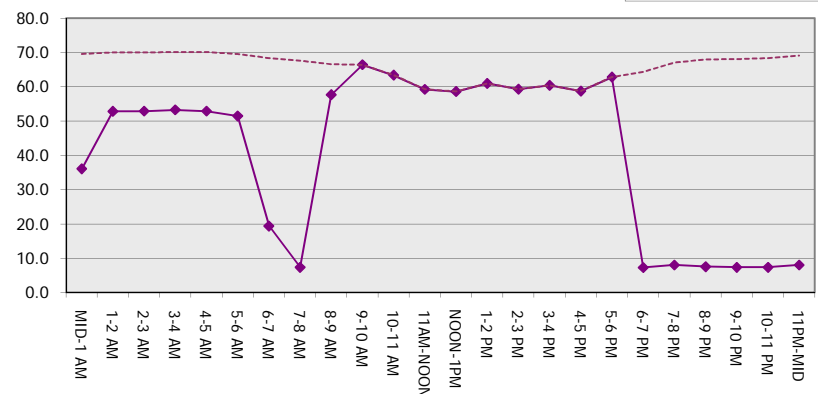
Main Route Average Delay Per Vehicle (Minutes)



Main Route - Average Queue Length (Vehicles)



Main Route - Average Speed (MPH)



USH 45: CTH E TO STH 190 (MILWAUKEE COUNTY) NIGHTTIME 2 LANE CLOSURE NO DIVERSION ROUTE (MAX QUEUE METHOD)	OCTOBER
	Analyzed for 2009 Construction Season

SUMMARY OF TRAFFIC MODEL OUTPUT

SATURDAY NORTHBOUND DIRECTION

TIME OF DAY	FLOWS AND CAPACITY IN VEH/HR						AVERAGE SPEEDS IN MPH			
	MAIN ROUTE		SITE CAPA CITY	FLOW		AV.DEL PER VEH (MINS)	AVERAGE QUEUE (VEH)	MAIN ROUTE		SITE
	DEMAND FLOW	PCT HEAVY		MAIN ROUTE	'DIVER TED'			WITHOUT WORK ZONE	WITH WORK ZONE	
MID-1 AM	1253	0.0	1500	1253	0	12.21	303	69.2	8.9	31.7
1-2 AM	893	0.0	1500	893	0	0.94	20	69.6	44.2	42.0
2-3 AM	834	0.0	1500	834	0	0.57	0	69.7	51.7	42.3
3-4 AM	679	0.0	1500	679	0	0.55	0	69.9	52.2	42.8
4-5 AM	838	0.0	1500	838	0	0.57	0	69.7	51.7	42.2
5-6 AM	1355	0.0	1499	1355	0	0.90	0	69.1	44.8	34.4
6-7 AM	1925	0.0	1499	1925	0	6.11	176	68.3	15.2	30.8
7-8 AM	2517	0.0	1499	1496	1020	16.93+	415	67.6	7.3	30.8
8-9 AM	3112	0.0	OFF	3112	0	0.32	30	66.9	56.3	56.3
9-10 AM	3818	0.0	OFF	3818	0	0.00	0	64.8	64.8	64.8
10-11 AM	4250	0.0	OFF	4250	0	0.00	0	61.8	61.8	61.8
11AM-NOON	4326	0.0	OFF	4326	0	0.00	0	61.3	61.3	61.3
NOON-1PM	4485	0.0	OFF	4485	0	0.00	0	60.2	60.2	60.2
1-2 PM	4327	0.0	OFF	4327	0	0.00	0	61.3	61.3	61.3
2-3 PM	4726	0.0	OFF	4726	0	0.00	0	58.6	58.6	58.6
3-4 PM	4455	0.0	OFF	4455	0	0.00	0	60.4	60.4	60.4
4-5 PM	4456	0.0	OFF	4456	0	0.00	0	60.4	60.4	60.4
5-6 PM	4057	0.0	OFF	4057	0	0.00	0	63.2	63.2	63.2
6-7 PM	3421	0.0	1499	1579	1842	17.32+	433	66.5	7.3	36.5
7-8 PM	3054	0.0	1499	1689	1365	15.13+	392	66.9	7.9	35.5
8-9 PM	2466	0.0	1499	1616	851	16.56+	406	67.7	7.5	30.8
9-10 PM	2441	0.0	1500	1506	935	16.93+	415	67.7	7.3	30.8
10-11 PM	2487	0.0	1500	1506	981	16.94+	415	67.6	7.3	30.8
11PM-MID	1883	0.0	1500	1502	381	16.91+	414	68.4	7.3	30.8

"OFF" INDICATES NO ROAD WORK (ALL LANES OPEN TO TRAFFIC)

+ INDICATES QUEUEING EXCEEDS USER-SPECIFIED MAXIMUM LIMIT

----- SITE BREAKDOWN DELAYS -----	
BREAKDOWN DURATION (MINS)	0
RANGE OF QUEUE DELAY - MIN	0.0
(VEH-H) MAX	0.0
AV BREAKDOWNS PER DAY	0.00
AV QUEUE DELAY/DAY (VEH-H)	0.0
AV TOTAL DELAY/DAY (VEH-H)	0.0

----- SITE ACCIDENT DELAYS -----	
BREAKDOWN DURATION (MINS)	0
RANGE OF QUEUE DELAY - MIN	0
(VEH-H) MAX	0
AV BREAKDOWNS PER DAY	0
AV QUEUE DELAY/DAY (VEH-H)	0
AV TOTAL DELAY/DAY (VEH-H)	0

AVERAGE ACCIDENT NUMBERS (PIA/DAY)	
MAIN ROUTE WITHOUT WORKS	0.0206
MAIN ROUTE WITH WORKS	0.0171
'DIVERSION'	0.0052

PIA: Personal Injury Accidents

ECONOMIC IMPACT ON ROAD USERS	
ROAD USER COSTS PER DAY	\$84,644
CONGESTED HOURS PER DAY*	7

*Delays Exceeding User-Specified Maximum

**USH 45: CTH E TO STH 190 (MILWAUKEE COUNTY)
NIGHTTIME 2 LANE CLOSURE
NO DIVERSION ROUTE (MAX QUEUE METHOD)**

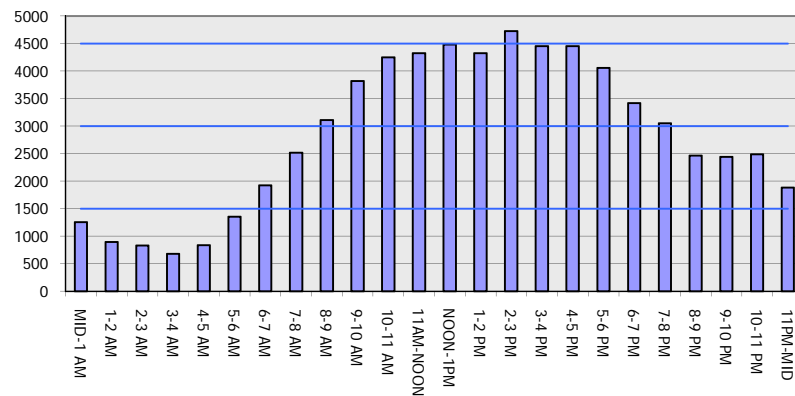
OCTOBER

Analyzed for 2009
Construction Season

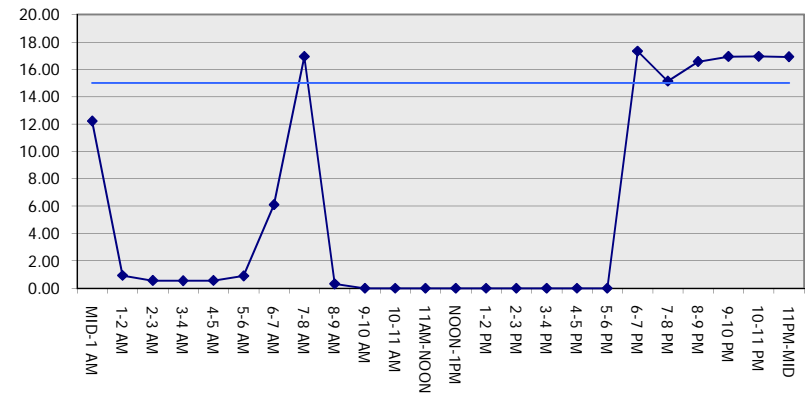
GRAPHICAL REPRESENTATION OF TRAFFIC MODEL INPUT AND OUTPUT

SATURDAY NORTHBOUND DIRECTION

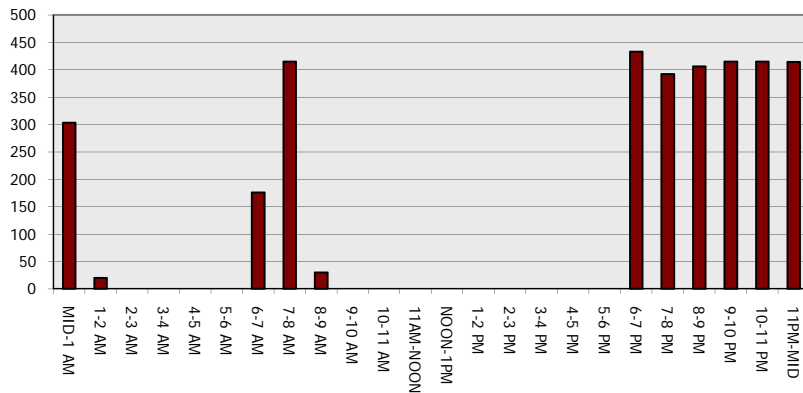
Main Route - Traffic Demand (Vehicles Per Hour)



Main Route Average Delay Per Vehicle (Minutes)



Main Route - Average Queue Length (Vehicles)



Main Route - Average Speed (MPH)

