

<b>USH 45: CTH E TO STH 190 (MILWAUKEE COUNTY)</b> <b>NIGHTTIME CLOSURE</b> <b>NO DIVERSION ROUTE (MAX QUEUE METHOD)</b>	<b>OCTOBER</b>
	Analyzed for 2009 Construction Season

**SUMMARY OF TRAFFIC MODEL OUTPUT**

FRIDAY      SOUTHBOUND DIRECTION

TIME OF DAY	FLOWS AND CAPACITY IN VEH/HR						AVERAGE SPEEDS IN MPH				
	MAIN ROUTE		SITE CAPA CITY	FLOW		AV.DEL PER VEH (MINS)	AVERAGE QUEUE (VEH)	MAIN ROUTE		SITE	
	DEMAND FLOW	PCT HEAVY		MAIN ROUTE	'DIVER TED'			WITHOUT WORK ZONE	WITH WORK ZONE		
MID-1 AM	728	0.0	3000	728	0	0.35	0	69.8	57.4	49.7	
1-2 AM	482	0.0	3000	482	0	0.36	0	70.1	57.4	49.7	
2-3 AM	423	0.0	3000	423	0	0.36	0	70.2	57.4	49.7	
3-4 AM	495	0.0	3000	495	0	0.36	0	70.1	57.4	49.7	
4-5 AM	814	0.0	3000	814	0	0.35	0	69.7	57.3	49.7	
5-6 AM	2260	0.0	OFF	2260	0	0.00	0	67.9	67.9	67.9	
6-7 AM	4962	0.0	OFF	4962	0	0.00	0	56.9	56.9	56.9	
7-8 AM	5760	0.0	OFF	5760	0	0.00	0	51.5	51.5	51.5	
8-9 AM	5046	0.0	OFF	5046	0	0.00	0	56.4	56.4	56.4	
9-10 AM	4449	0.0	OFF	4449	0	0.00	0	60.5	60.5	60.5	
10-11 AM	3419	0.0	OFF	3419	0	0.00	0	66.5	66.5	66.5	
11AM-NOON	4665	0.0	OFF	4665	0	0.00	0	59.0	59.0	59.0	
NOON-1PM	4892	0.0	OFF	4892	0	0.00	0	57.4	57.4	57.4	
1-2 PM	5002	0.0	OFF	5002	0	0.00	0	56.7	56.7	56.7	
2-3 PM	5664	0.0	OFF	5664	0	0.00	0	52.2	52.2	52.2	
3-4 PM	4713	0.0	OFF	4713	0	0.00	0	58.7	58.7	58.7	
4-5 PM	4548	0.0	OFF	4548	0	0.00	0	59.8	59.8	59.8	
5-6 PM	4309	0.0	OFF	4309	0	0.00	0	61.4	61.4	61.4	
6-7 PM	4192	0.0	OFF	4192	0	0.00	0	62.2	62.2	62.2	
7-8 PM	3397	0.0	2999	3397	0	4.85	249	66.5	18.3	37.3	
8-9 PM	2549	0.0	2999	2549	0	3.22	203	67.6	24.1	41.0	
9-10 PM	2447	0.0	3000	2447	0	0.37	0	67.7	55.6	48.1	
10-11 PM	1861	0.0	3000	1861	0	0.34	0	68.4	56.9	49.7	
11PM-MID	1559	0.0	3000	1559	0	0.34	0	68.8	57.0	49.7	

**"OFF" INDICATES NO ROAD WORK (ALL LANES OPEN TO TRAFFIC)**

*----- SITE BREAKDOWN DELAYS -----*	
BREAKDOWN DURATION (MINS)	0
RANGE OF QUEUE DELAY - MIN (VEH-H) MAX	0.0
AV BREAKDOWNS PER DAY	0.00
AV QUEUE DELAY/DAY (VEH-H)	0.0
AV TOTAL DELAY/DAY (VEH-H)	0.0

*----- SITE ACCIDENT DELAYS -----*	
BREAKDOWN DURATION (MINS)	0
RANGE OF QUEUE DELAY - MIN (VEH-H) MAX	0
AV BREAKDOWNS PER DAY	0
AV QUEUE DELAY/DAY (VEH-H)	0
AV TOTAL DELAY/DAY (VEH-H)	0

AVERAGE ACCIDENT NUMBERS (PIA/DAY)	
MAIN ROUTE WITHOUT WORKS	0.0238
MAIN ROUTE WITH WORKS	0.0228
'DIVERSION'	0.0000
<small>PIA: Personal Injury Accidents</small>	
IMPACTS ON ROAD USERS	
ROAD USER COSTS PER DAY	\$7,066
CONGESTED HOURS PER DAY*	0

\*Delays Exceeding User-Specified Maximum

**USH 45: CTH E TO STH 190 (MILWAUKEE COUNTY)  
NIGHTTIME CLOSURE  
NO DIVERSION ROUTE (MAX QUEUE METHOD)**

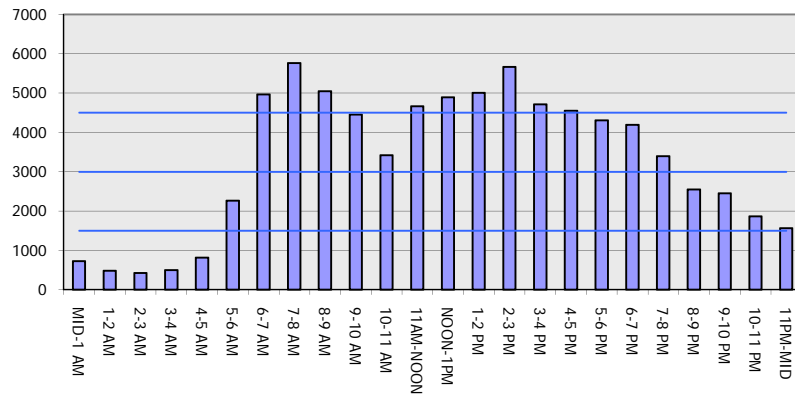
**OCTOBER**

Analyzed for 2009  
Construction Season

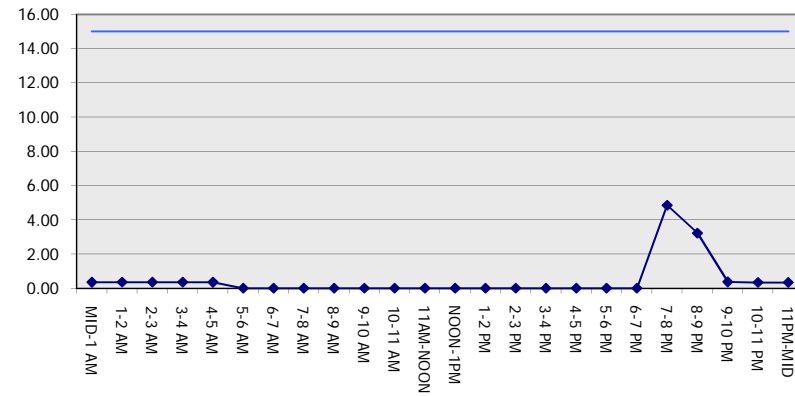
**GRAPHICAL REPRESENTATION OF TRAFFIC MODEL INPUT AND OUTPUT**

**FRIDAY SOUTHBOUND DIRECTION**

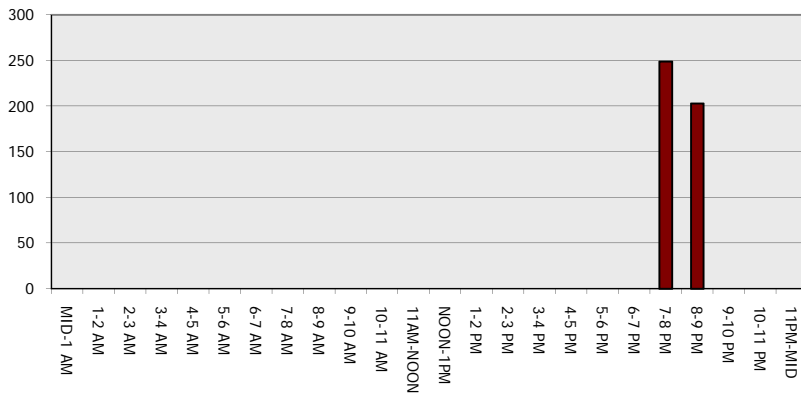
**Main Route - Traffic Demand (Vehicles Per Hour)**



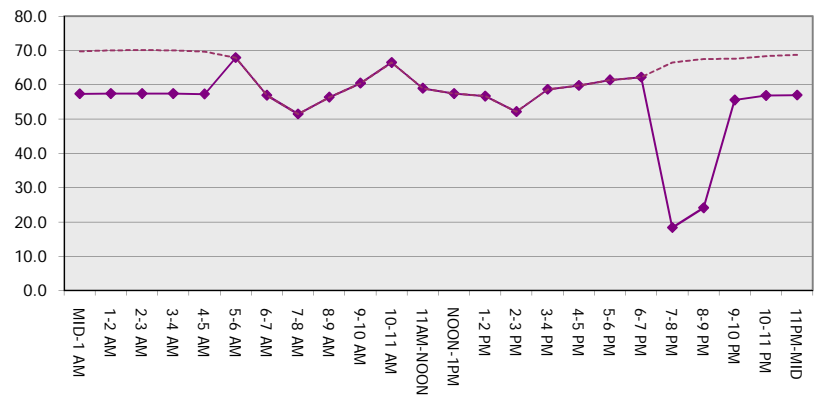
**Main Route Average Delay Per Vehicle (Minutes)**



**Main Route - Average Queue Length (Vehicles)**



**Main Route - Average Speed (MPH)**



<b>USH 45: CTH E TO STH 190 (MILWAUKEE COUNTY)</b> <b>NIGHTTIME CLOSURE</b> <b>NO DIVERSION ROUTE (MAX QUEUE METHOD)</b>	<b>OCTOBER</b>
	Analyzed for 2009 Construction Season

**SUMMARY OF TRAFFIC MODEL OUTPUT**

FRIDAY      NORTHBOUND DIRECTION

TIME OF DAY	FLOWS AND CAPACITY IN VEH/HR						AVERAGE SPEEDS IN MPH			
	MAIN ROUTE		SITE CAPA CITY	FLOW		AV.DEL PER VEH (MINS)	AVERAGE QUEUE (VEH)	MAIN ROUTE		SITE
	DEMAND FLOW	PCT HEAVY		MAIN ROUTE	'DIVER TED'			WITHOUT WORK ZONE	WITH WORK ZONE	
MID-1 AM	990	0.0	3000	990	0	0.35	0	69.5	57.3	49.7
1-2 AM	761	0.0	3000	761	0	0.35	0	69.8	57.3	49.7
2-3 AM	703	0.0	3000	703	0	0.36	0	69.9	57.4	49.7
3-4 AM	746	0.0	3000	746	0	0.35	0	69.8	57.4	49.7
4-5 AM	1308	0.0	3000	1308	0	0.35	0	69.1	57.1	49.7
5-6 AM	3143	0.0	OFF	3143	0	0.00	0	66.8	66.8	66.8
6-7 AM	5283	0.0	OFF	5283	0	0.00	0	54.8	54.8	54.8
7-8 AM	6297	0.0	OFF	6297	0	0.00	0	47.8	47.8	47.8
8-9 AM	5138	0.0	OFF	5138	0	0.00	0	55.8	55.8	55.8
9-10 AM	4463	0.0	OFF	4463	0	0.00	0	60.4	60.4	60.4
10-11 AM	3620	0.0	OFF	3620	0	0.00	0	66.1	66.1	66.1
11AM-NOON	4865	0.0	OFF	4865	0	0.00	0	57.6	57.6	57.6
NOON-1PM	5199	0.0	OFF	5199	0	0.00	0	55.3	55.3	55.3
1-2 PM	5464	0.0	OFF	5464	0	0.00	0	53.5	53.5	53.5
2-3 PM	6088	0.0	OFF	6088	0	0.00	0	49.2	49.2	49.2
3-4 PM	5999	0.0	OFF	5999	0	0.00	0	49.9	49.9	49.9
4-5 PM	6494	0.0	OFF	6494	0	0.00	0	46.5	46.5	46.5
5-6 PM	6468	0.0	OFF	6468	0	0.00	0	46.7	46.7	46.7
6-7 PM	4330	0.0	OFF	4330	0	0.00	0	61.3	61.3	61.3
7-8 PM	3669	0.0	2999	3669	0	6.86	378	65.8	15.2	37.3
8-9 PM	2919	0.0	2999	2919	0	12.51	649	67.1	11.2	37.3
9-10 PM	2996	0.0	3000	2996	0	11.69	603	67.0	11.6	37.3
10-11 PM	2349	0.0	2999	2349	0	4.18	296	67.8	21.4	42.7
11PM-MID	1881	0.0	3000	1881	0	0.34	0	68.4	56.9	49.7

"OFF" INDICATES NO ROAD WORK (ALL LANES OPEN TO TRAFFIC)

*----- SITE BREAKDOWN DELAYS -----*	
BREAKDOWN DURATION (MINS)	0
RANGE OF QUEUE DELAY - MIN (VEH-H) MAX	0.0
AV BREAKDOWNS PER DAY	0.00
AV QUEUE DELAY/DAY (VEH-H)	0.0
AV TOTAL DELAY/DAY (VEH-H)	0.0

*----- SITE ACCIDENT DELAYS -----*	
BREAKDOWN DURATION (MINS)	0
RANGE OF QUEUE DELAY - MIN (VEH-H) MAX	0
AV BREAKDOWNS PER DAY	0
AV QUEUE DELAY/DAY (VEH-H)	0
AV TOTAL DELAY/DAY (VEH-H)	0

AVERAGE ACCIDENT NUMBERS (PIA/DAY)	
MAIN ROUTE WITHOUT WORKS	0.0276
MAIN ROUTE WITH WORKS	0.0264
'DIVERSION'	0.0000

PIA: Personal Injury Accidents

ECONOMIC IMPACT ON ROAD USERS	
ROAD USER COSTS PER DAY	\$27,649
CONGESTED HOURS PER DAY*	0

\*Delays Exceeding User-Specified Maximum

**USH 45: CTH E TO STH 190 (MILWAUKEE COUNTY)  
NIGHTTIME CLOSURE  
NO DIVERSION ROUTE (MAX QUEUE METHOD)**

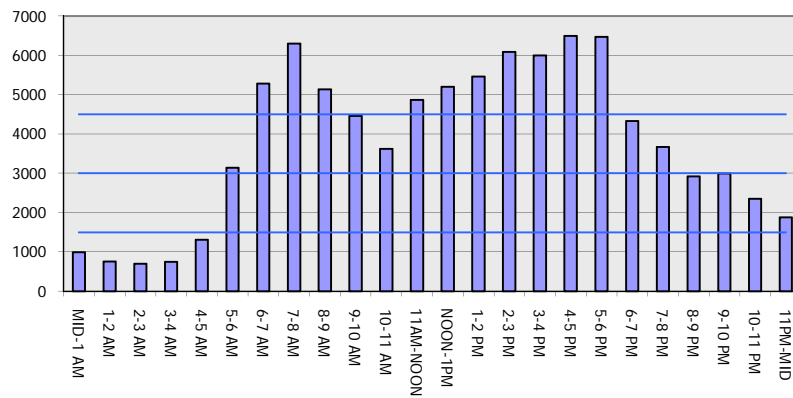
**OCTOBER**

Analyzed for 2009  
Construction Season

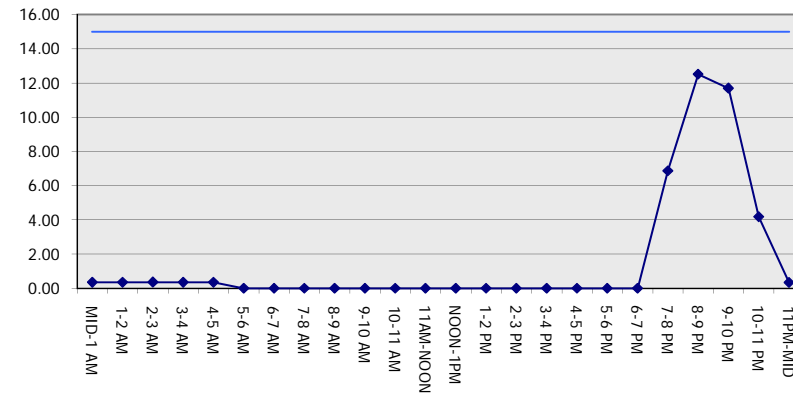
**GRAPHICAL REPRESENTATION OF TRAFFIC MODEL INPUT AND OUTPUT**

**FRIDAY NORTHBOUND DIRECTION**

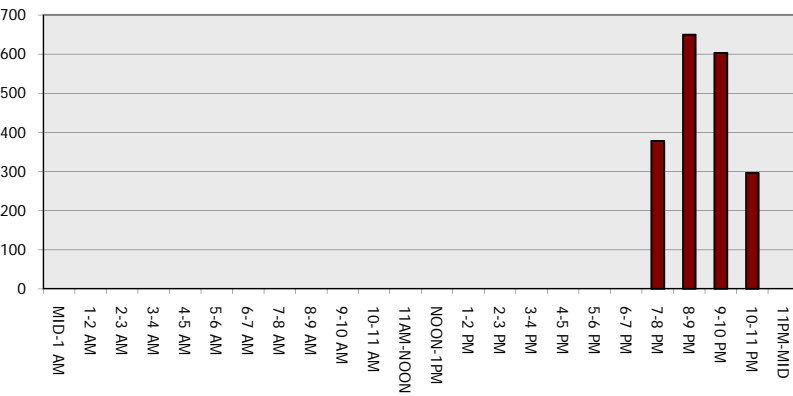
**Main Route - Traffic Demand (Vehicles Per Hour)**



**Main Route Average Delay Per Vehicle (Minutes)**



**Main Route - Average Queue Length (Vehicles)**



**Main Route - Average Speed (MPH)**

