

USH 45: CTH E TO STH 190 (MILWAUKEE COUNTY) NIGHTTIME 2 LANE CLOSURE NO DIVERSION ROUTE (MAX QUEUE METHOD)	AUGUST
	Analyzed for 2009 Construction Season

SUMMARY OF TRAFFIC MODEL OUTPUT

SATURDAY SOUTHBOUND DIRECTION

TIME OF DAY	FLOWS AND CAPACITY IN VEH/HR						AVERAGE SPEEDS IN MPH				
	MAIN ROUTE		SITE CAPA CITY	FLOW		AV.DEL PER VEH (MINS)	AVERAGE QUEUE (VEH)	MAIN ROUTE		SITE	
	DEMAND FLOW	PCT HEAVY		MAIN ROUTE	'DIVER TED'			WITHOUT WORK ZONE	WITH WORK ZONE		
MID-1 AM	879	0.0	1499	879	0	2.33	114	69.6	29.0	39.3	
1-2 AM	510	0.0	1500	510	0	0.53	0	70.1	52.8	43.5	
2-3 AM	459	0.0	1500	459	0	0.53	0	70.2	53.0	43.7	
3-4 AM	377	0.0	1500	377	0	0.52	0	70.2	53.2	44.0	
4-5 AM	467	0.0	1500	467	0	0.53	0	70.2	52.9	43.7	
5-6 AM	935	0.0	1499	935	0	0.58	0	69.6	51.4	41.9	
6-7 AM	1622	0.0	1499	1622	0	1.95	35	68.7	31.5	31.2	
7-8 AM	2205	0.0	1500	1785	420	13.89+	348	68.0	8.3	30.8	
8-9 AM	2701	0.0	OFF	2701	0	0.29	27	67.4	57.6	57.6	
9-10 AM	3404	0.0	OFF	3404	0	0.00	0	66.5	66.5	66.5	
10-11 AM	4095	0.0	OFF	4095	0	0.00	0	62.9	62.9	62.9	
11AM-NOON	4560	0.0	OFF	4560	0	0.00	0	59.7	59.7	59.7	
NOON-1PM	4846	0.0	OFF	4846	0	0.00	0	57.8	57.8	57.8	
1-2 PM	4488	0.0	OFF	4488	0	0.00	0	60.2	60.2	60.2	
2-3 PM	4525	0.0	OFF	4525	0	0.00	0	59.9	59.9	59.9	
3-4 PM	4527	0.0	OFF	4527	0	0.00	0	59.9	59.9	59.9	
4-5 PM	4309	0.0	OFF	4309	0	0.00	0	61.4	61.4	61.4	
5-6 PM	3950	0.0	OFF	3950	0	0.00	0	63.9	63.9	63.9	
6-7 PM	3310	0.0	1499	1578	1731	17.32+	433	66.6	7.3	36.5	
7-8 PM	2747	0.0	1499	1644	1103	15.03+	392	67.3	8.0	35.6	
8-9 PM	2379	0.0	1499	1739	640	16.11+	396	67.8	7.6	30.8	
9-10 PM	2081	0.0	1499	1496	586	16.91+	414	68.1	7.3	30.8	
10-11 PM	1870	0.0	1499	1474	397	16.83+	412	68.4	7.4	30.8	
11PM-MID	1473	0.0	1499	1411	62	16.18+	395	68.9	7.5	30.8	

"OFF" INDICATES NO ROAD WORK (ALL LANES OPEN TO TRAFFIC)

+ INDICATES QUEUEING EXCEEDS USER-SPECIFIED MAXIMUM LIMIT

----- SITE BREAKDOWN DELAYS -----	
BREAKDOWN DURATION (MINS)	0
RANGE OF QUEUE DELAY - MIN	0.0
(VEH-H) MAX	0.0
AV BREAKDOWNS PER DAY	0.00
AV QUEUE DELAY/DAY (VEH-H)	0.0
AV TOTAL DELAY/DAY (VEH-H)	0.0

----- SITE ACCIDENT DELAYS -----	
BREAKDOWN DURATION (MINS)	0
RANGE OF QUEUE DELAY - MIN	0
(VEH-H) MAX	0
AV BREAKDOWNS PER DAY	0
AV QUEUE DELAY/DAY (VEH-H)	0
AV TOTAL DELAY/DAY (VEH-H)	0

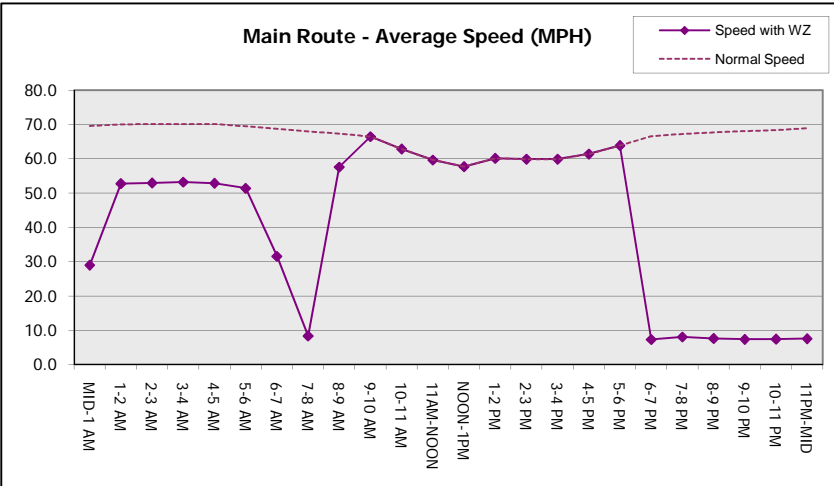
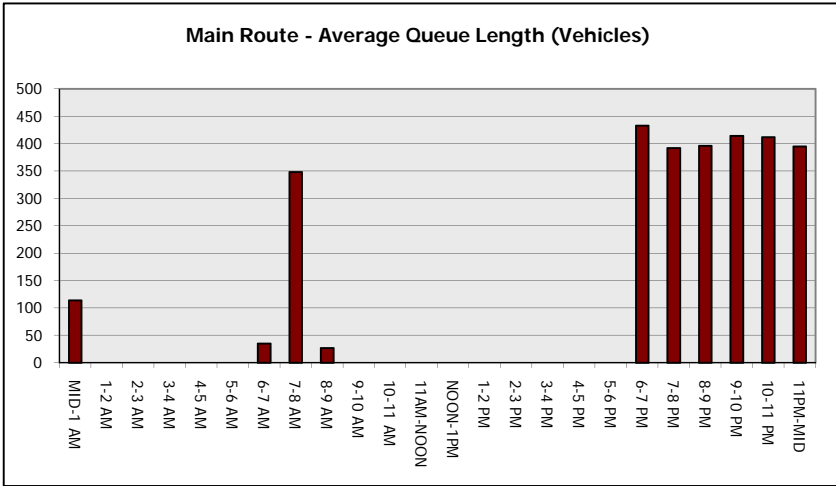
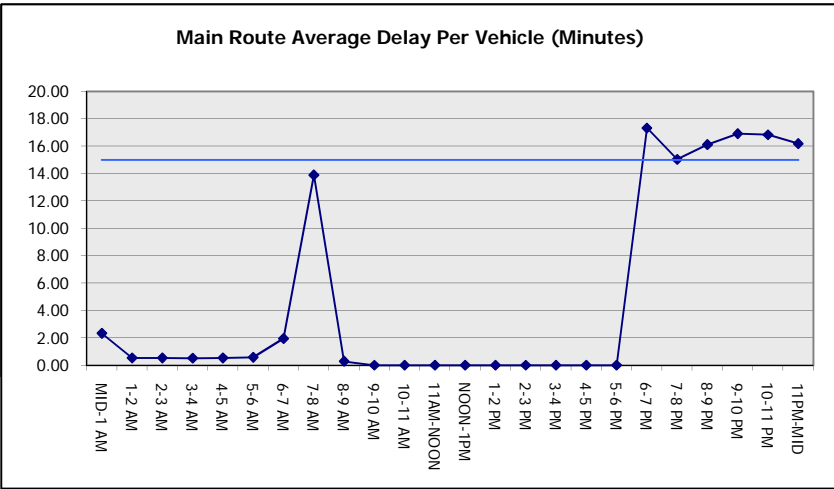
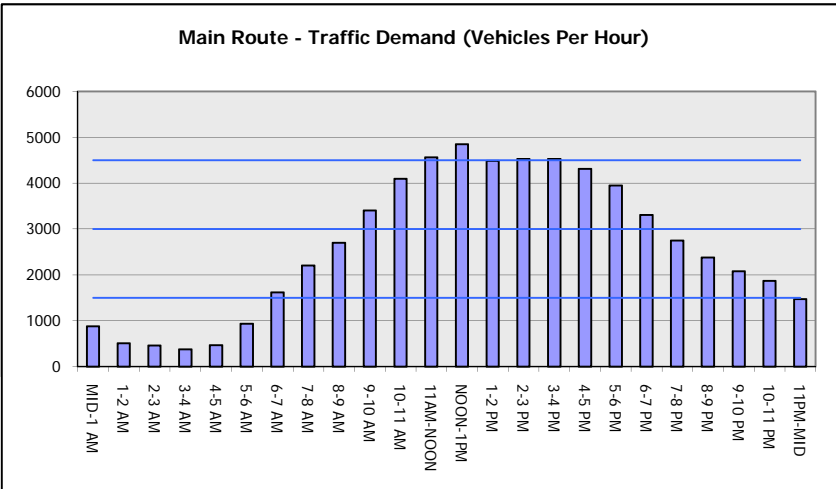
AVERAGE ACCIDENT NUMBERS (PIA/DAY)	
MAIN ROUTE WITHOUT WORKS	0.0190
MAIN ROUTE WITH WORKS	0.0164
'DIVERSION'	0.0035
PIA: Personal Injury Accidents	
IMPACTS ON ROAD USERS	
ROAD USER COSTS PER DAY	\$66,897
CONGESTED HOURS PER DAY*	7

*Delays Exceeding User-Specified Maximum

**USH 45: CTH E TO STH 190 (MILWAUKEE COUNTY)
NIGHTTIME 2 LANE CLOSURE
NO DIVERSION ROUTE (MAX QUEUE METHOD)**

AUGUST
Analyzed for 2009
Construction Season

GRAPHICAL REPRESENTATION OF TRAFFIC MODEL INPUT AND OUTPUT
SATURDAY SOUTHBOUND DIRECTION



USH 45: CTH E TO STH 190 (MILWAUKEE COUNTY) NIGHTTIME 2 LANE CLOSURE NO DIVERSION ROUTE (MAX QUEUE METHOD)	AUGUST
	Analyzed for 2009 Construction Season

SUMMARY OF TRAFFIC MODEL OUTPUT

SATURDAY NORTHBOUND DIRECTION

TIME OF DAY	FLOWS AND CAPACITY IN VEH/HR							AVERAGE SPEEDS IN MPH		
	MAIN ROUTE		SITE CAPA CITY	FLOW		AV.DEL PER VEH (MINS)	AVERAGE QUEUE (VEH)	MAIN ROUTE		SITE
	DEMAND FLOW	PCT HEAVY		MAIN ROUTE	'DIVER TED'			WITHOUT WORK ZONE	WITH WORK ZONE	
MID-1 AM	1388	0.0	1500	1371	17	15.66+	383	69.0	7.7	30.8
1-2 AM	924	0.0	1499	924	0	1.89	81	69.6	32.4	40.0
2-3 AM	843	0.0	1500	843	0	0.57	0	69.7	51.7	42.2
3-4 AM	639	0.0	1500	639	0	0.55	0	69.9	52.4	43.0
4-5 AM	853	0.0	1500	853	0	0.57	0	69.7	51.7	42.2
5-6 AM	1292	0.0	1499	1292	0	0.81	0	69.1	46.3	36.1
6-7 AM	1945	0.0	1499	1945	0	6.23	182	68.3	15.0	30.8
7-8 AM	2575	0.0	1499	1490	1084	16.96+	416	67.6	7.3	30.8
8-9 AM	3044	0.0	OFF	3044	0	0.33	32	66.9	56.0	56.0
9-10 AM	3432	0.0	OFF	3432	0	0.00	0	66.4	66.4	66.4
10-11 AM	3797	0.0	OFF	3797	0	0.00	0	64.9	64.9	64.9
11AM-NOON	4257	0.0	OFF	4257	0	0.00	0	61.8	61.8	61.8
NOON-1PM	4508	0.0	OFF	4508	0	0.00	0	60.1	60.1	60.1
1-2 PM	4458	0.0	OFF	4458	0	0.00	0	60.4	60.4	60.4
2-3 PM	4524	0.0	OFF	4524	0	0.00	0	59.9	59.9	59.9
3-4 PM	4507	0.0	OFF	4507	0	0.00	0	60.1	60.1	60.1
4-5 PM	4104	0.0	OFF	4104	0	0.00	0	62.8	62.8	62.8
5-6 PM	3828	0.0	OFF	3828	0	0.00	0	64.7	64.7	64.7
6-7 PM	3234	0.0	1499	1578	1656	17.32+	433	66.7	7.3	36.5
7-8 PM	2802	0.0	1499	1649	1154	15.04+	392	67.3	8.0	35.6
8-9 PM	2800	0.0	1499	1689	1111	16.41+	403	67.3	7.5	30.8
9-10 PM	2904	0.0	1500	1502	1402	17.07+	419	67.1	7.3	30.8
10-11 PM	2605	0.0	1500	1499	1106	16.94+	415	67.5	7.3	30.8
11PM-MID	2091	0.0	1500	1500	591	16.91+	414	68.1	7.3	30.8

"OFF" INDICATES NO ROAD WORK (ALL LANES OPEN TO TRAFFIC)

+ INDICATES QUEUEING EXCEEDS USER-SPECIFIED MAXIMUM LIMIT

----- SITE BREAKDOWN DELAYS -----	
BREAKDOWN DURATION (MINS)	0
RANGE OF QUEUE DELAY - MIN (VEH-H) MAX	0.0
AV BREAKDOWNS PER DAY	0.00
AV QUEUE DELAY/DAY (VEH-H)	0.0
AV TOTAL DELAY/DAY (VEH-H)	0.0

----- SITE ACCIDENT DELAYS -----	
BREAKDOWN DURATION (MINS)	0
RANGE OF QUEUE DELAY - MIN (VEH-H) MAX	0
AV BREAKDOWNS PER DAY	0
AV QUEUE DELAY/DAY (VEH-H)	0
AV TOTAL DELAY/DAY (VEH-H)	0

AVERAGE ACCIDENT NUMBERS (PIA/DAY)	
MAIN ROUTE WITHOUT WORKS	0.0204
MAIN ROUTE WITH WORKS	0.0167
'DIVERSION'	0.0057

PIA: Personal Injury Accidents

ECONOMIC IMPACT ON ROAD USERS	
ROAD USER COSTS PER DAY	\$89,630
CONGESTED HOURS PER DAY*	8

*Delays Exceeding User-Specified Maximum

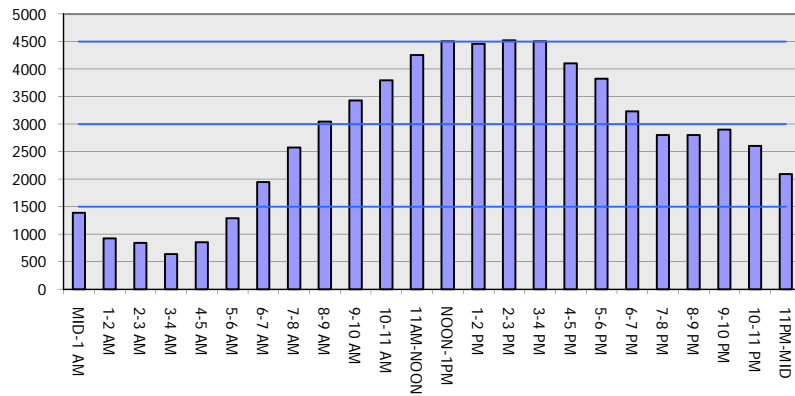
**USH 45: CTH E TO STH 190 (MILWAUKEE COUNTY)
 NIGHTTIME 2 LANE CLOSURE
 NO DIVERSION ROUTE (MAX QUEUE METHOD)**

AUGUST

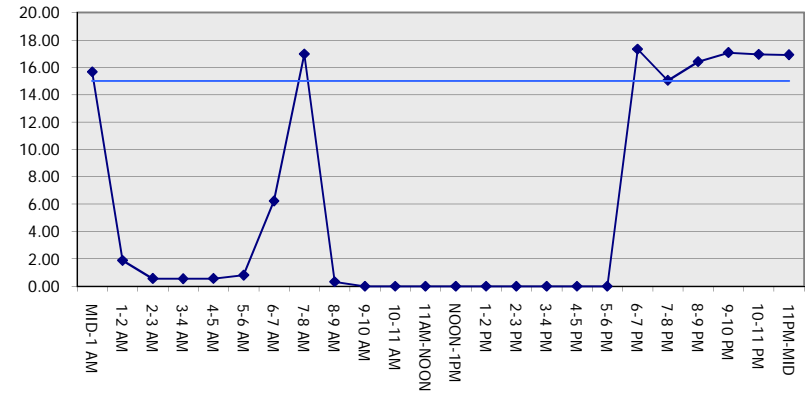
Analyzed for 2009
 Construction Season

GRAPHICAL REPRESENTATION OF TRAFFIC MODEL INPUT AND OUTPUT
SATURDAY NORTHBOUND DIRECTION

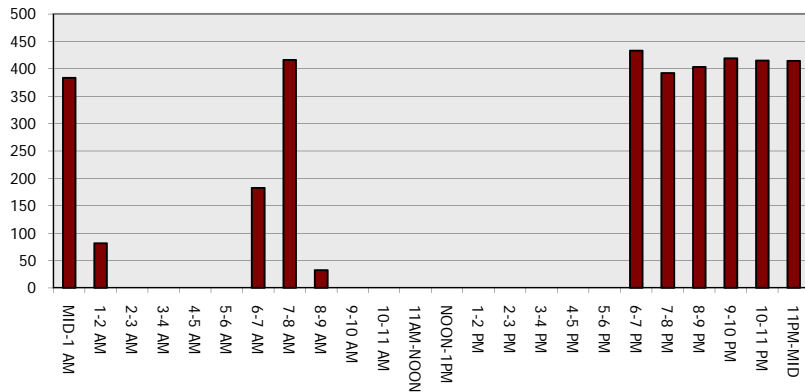
Main Route - Traffic Demand (Vehicles Per Hour)



Main Route Average Delay Per Vehicle (Minutes)



Main Route - Average Queue Length (Vehicles)



Main Route - Average Speed (MPH)

