

**IH 94: USH 41 AND IH 43 (MILWAUKEE COUNTY)
NIGHTTIME 2 LANE CLOSURE
NO DIVERSION ROUTE (MAX QUEUE METHOD)**

OCTOBER
Analyzed for 2009
Construction Season

SUMMARY OF TRAFFIC MODEL OUTPUT
SUNDAY WESTBOUND DIRECTION

TIME OF DAY	FLOWS AND CAPACITY IN VEH/HR						AVERAGE SPEEDS IN MPH				
	MAIN ROUTE		SITE CAPA CITY	FLOW		AV.DEL PER VEH (MINS)	AVERAGE QUEUE (VEH)	MAIN ROUTE		SITE	
	DEMAND FLOW	PCT HEAVY		MAIN ROUTE	'DIVER TED'			WITHOUT WORK ZONE	WITH WORK ZONE		
MID-1 AM	1737	0.0	1499	1737	0	4.41	106	68.6	20.2	30.8	
1-2 AM	1261	0.0	1499	1261	0	4.87	125	69.2	18.8	32.6	
2-3 AM	1486	0.0	1499	1486	0	1.54	13	68.9	37.4	31.5	
3-4 AM	644	0.0	1500	644	0	0.55	0	69.9	53.6	43.0	
4-5 AM	420	0.0	1500	420	0	0.52	0	70.2	54.3	43.8	
5-6 AM	435	0.0	1500	435	0	0.53	0	70.2	54.3	43.8	
6-7 AM	807	0.0	1500	807	0	0.57	0	69.7	53.1	42.4	
7-8 AM	1085	0.0	1499	1085	0	0.63	0	69.4	51.6	40.6	
8-9 AM	1490	0.0	1499	1490	0	1.46	15	68.9	38.3	32.5	
9-10 AM	2183	0.0	OFF	2183	0	0.01	0	68.0	67.8	67.8	
10-11 AM	3043	0.0	OFF	3043	0	0.00	0	66.9	66.9	66.9	
11AM-NOON	3432	0.0	OFF	3432	0	0.00	0	66.4	66.4	66.4	
NOON-1PM	4036	0.0	OFF	4036	0	0.00	0	63.3	63.3	63.3	
1-2 PM	4092	0.0	OFF	4092	0	0.00	0	62.9	62.9	62.9	
2-3 PM	4008	0.0	OFF	4008	0	0.00	0	63.5	63.5	63.5	
3-4 PM	3926	0.0	OFF	3926	0	0.00	0	64.0	64.0	64.0	
4-5 PM	3657	0.0	OFF	3657	0	0.00	0	65.9	65.9	65.9	
5-6 PM	3450	0.0	OFF	3450	0	0.00	0	66.4	66.4	66.4	
6-7 PM	2871	0.0	OFF	2871	0	0.00	0	67.2	67.2	67.2	
7-8 PM	2617	0.0	1499	1830	787	13.95+	346	67.5	8.5	34.2	
8-9 PM	2144	0.0	1499	1535	609	16.64+	408	68.1	7.7	31.1	
9-10 PM	1743	0.0	1500	1548	195	16.54+	404	68.6	7.7	30.8	
10-11 PM	1323	0.0	1499	1323	0	14.37+	351	69.1	8.4	30.8	
11PM-MID	879	0.0	1500	879	0	1.24	41	69.6	41.4	41.9	

"OFF" INDICATES NO ROAD WORK (ALL LANES OPEN TO TRAFFIC)

+ INDICATES QUEUEING EXCEEDS USER-SPECIFIED MAXIMUM LIMIT

----- SITE BREAKDOWN DELAYS -----	
BREAKDOWN DURATION (MINS)	0
RANGE OF QUEUE DELAY - MIN (VEH-H) MAX	0.0
AV BREAKDOWNS PER DAY	0.00
AV QUEUE DELAY/DAY (VEH-H)	0.0
AV TOTAL DELAY/DAY (VEH-H)	0.0

----- SITE ACCIDENT DELAYS -----	
BREAKDOWN DURATION (MINS)	0
RANGE OF QUEUE DELAY - MIN (VEH-H) MAX	0
AV BREAKDOWNS PER DAY	0
AV QUEUE DELAY/DAY (VEH-H)	0
AV TOTAL DELAY/DAY (VEH-H)	0

AVERAGE ACCIDENT NUMBERS (PIA/DAY)	
MAIN ROUTE WITHOUT WORKS	0.0176
MAIN ROUTE WITH WORKS	0.0160
'DIVERSION'	0.0012
PIA: Personal Injury Accidents	
IMPACTS ON ROAD USERS	
ROAD USER COSTS PER DAY	\$36,576
CONGESTED HOURS PER DAY*	4

*Delays Exceeding User-Specified Maximum

**IH 94: USH 41 AND IH 43 (MILWAUKEE COUNTY)
NIGHTTIME 2 LANE CLOSURE
NO DIVERSION ROUTE (MAX QUEUE METHOD)**

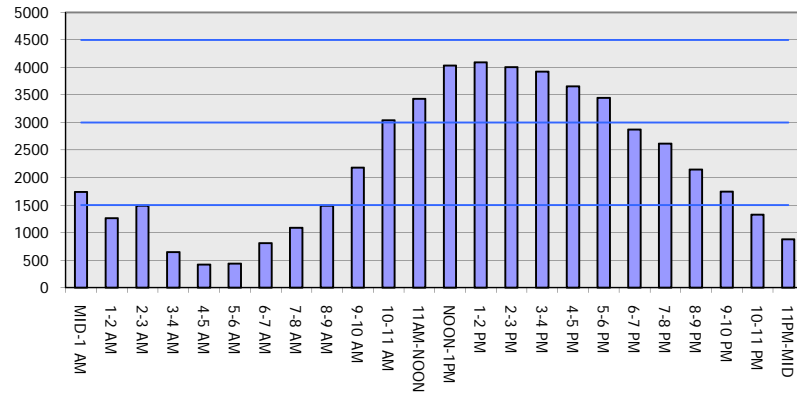
OCTOBER

Analyzed for 2009
Construction Season

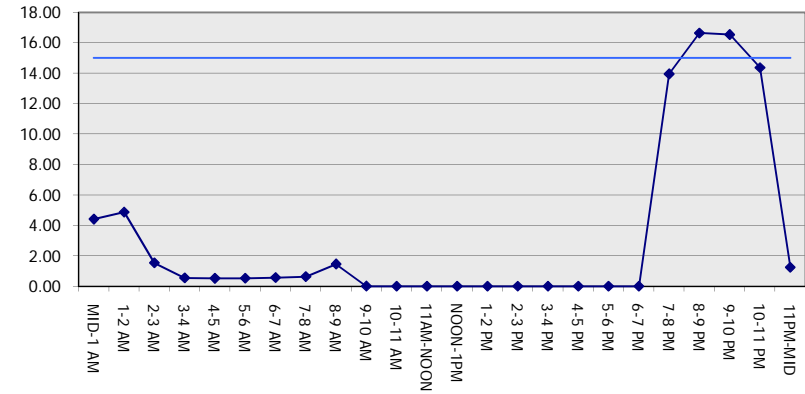
GRAPHICAL REPRESENTATION OF TRAFFIC MODEL INPUT AND OUTPUT

SUNDAY WESTBOUND DIRECTION

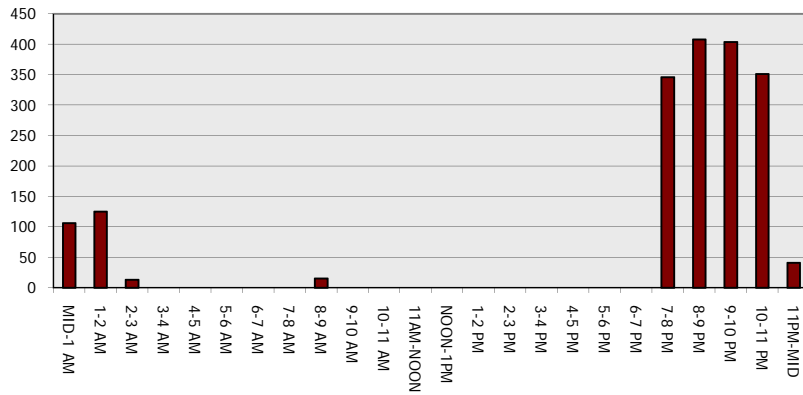
Main Route - Traffic Demand (Vehicles Per Hour)



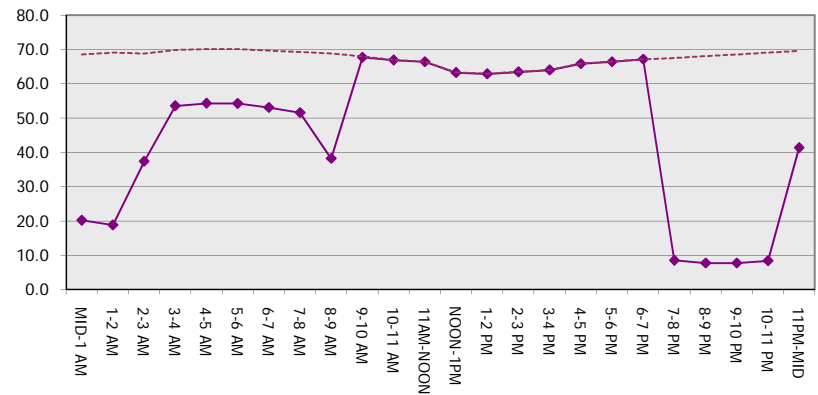
Main Route Average Delay Per Vehicle (Minutes)



Main Route - Average Queue Length (Vehicles)



Main Route - Average Speed (MPH)



IH 94: USH 41 AND IH 43 (MILWAUKEE COUNTY) NIGHTTIME 2 LANE CLOSURE NO DIVERSION ROUTE (MAX QUEUE METHOD)	OCTOBER
	Analyzed for 2009 Construction Season

SUMMARY OF TRAFFIC MODEL OUTPUT

SUNDAY EASTBOUND DIRECTION

TIME OF DAY	FLOWS AND CAPACITY IN VEH/HR						AVERAGE SPEEDS IN MPH			
	MAIN ROUTE		SITE CAPA CITY	FLOW		AV.DEL PER VEH (MINS)	AVERAGE QUEUE (VEH)	MAIN ROUTE		SITE
	DEMAND FLOW	PCT HEAVY		MAIN ROUTE	'DIVER TED'			WITHOUT WORK ZONE	WITH WORK ZONE	
MID-1 AM	1093	0.0	1500	1093	0	0.60	0	69.4	52.2	41.4
1-2 AM	647	0.0	1500	647	0	0.55	0	69.9	53.6	43.0
2-3 AM	538	0.0	1500	538	0	0.54	0	70.0	54.0	43.3
3-4 AM	404	0.0	1500	404	0	0.52	0	70.2	54.3	43.9
4-5 AM	366	0.0	1500	366	0	0.52	0	70.2	54.5	44.0
5-6 AM	634	0.0	1500	634	0	0.55	0	69.9	53.7	43.0
6-7 AM	1038	0.0	1500	1038	0	0.59	0	69.4	52.4	41.5
7-8 AM	1091	0.0	1499	1091	0	0.61	0	69.4	52.0	41.0
8-9 AM	1414	0.0	1499	1414	0	1.05	2	69.0	43.7	33.0
9-10 AM	1953	0.0	OFF	1953	0	0.00	0	68.3	68.3	68.3
10-11 AM	2274	0.0	OFF	2274	0	0.00	0	67.9	67.9	67.9
11AM-NOON	2756	0.0	OFF	2756	0	0.00	0	67.3	67.3	67.3
NOON-1PM	3042	0.0	OFF	3042	0	0.00	0	66.9	66.9	66.9
1-2 PM	3102	0.0	OFF	3102	0	0.00	0	66.9	66.9	66.9
2-3 PM	3018	0.0	OFF	3018	0	0.00	0	67.0	67.0	67.0
3-4 PM	3080	0.0	OFF	3080	0	0.00	0	66.9	66.9	66.9
4-5 PM	3061	0.0	OFF	3061	0	0.00	0	66.9	66.9	66.9
5-6 PM	2790	0.0	OFF	2790	0	0.00	0	67.3	67.3	67.3
6-7 PM	2712	0.0	OFF	2712	0	0.00	0	67.4	67.4	67.4
7-8 PM	2696	0.0	1499	1777	919	14.22+	355	67.4	8.4	35.3
8-9 PM	2047	0.0	1499	1644	403	16.21+	397	68.2	7.8	30.8
9-10 PM	1726	0.0	1499	1499	226	16.76+	410	68.6	7.6	30.8
10-11 PM	1203	0.0	1499	1203	0	11.78+	300	69.2	9.7	32.3
11PM-MID	790	0.0	1500	790	0	0.78	10	69.7	48.7	42.4

"OFF" INDICATES NO ROAD WORK (ALL LANES OPEN TO TRAFFIC)

+ INDICATES QUEUEING EXCEEDS USER-SPECIFIED MAXIMUM LIMIT

----- SITE BREAKDOWN DELAYS -----	
BREAKDOWN DURATION (MINS)	0
RANGE OF QUEUE DELAY - MIN (VEH-H) MAX	0.0
AV BREAKDOWNS PER DAY	0.00
AV QUEUE DELAY/DAY (VEH-H)	0.0
AV TOTAL DELAY/DAY (VEH-H)	0.0

----- SITE ACCIDENT DELAYS -----	
BREAKDOWN DURATION (MINS)	0
RANGE OF QUEUE DELAY - MIN (VEH-H) MAX	0
AV BREAKDOWNS PER DAY	0
AV QUEUE DELAY/DAY (VEH-H)	0
AV TOTAL DELAY/DAY (VEH-H)	0

AVERAGE ACCIDENT NUMBERS (PIA/DAY)	
MAIN ROUTE WITHOUT WORKS	0.0145
MAIN ROUTE WITH WORKS	0.0131
'DIVERSION'	0.0012

PIA: Personal Injury Accidents

ECONOMIC IMPACT ON ROAD USERS	
ROAD USER COSTS PER DAY	\$31,064
CONGESTED HOURS PER DAY*	4

*Delays Exceeding User-Specified Maximum

**IH 94: USH 41 AND IH 43 (MILWAUKEE COUNTY)
NIGHTTIME 2 LANE CLOSURE
NO DIVERSION ROUTE (MAX QUEUE METHOD)**

OCTOBER

Analyzed for 2009
Construction Season

GRAPHICAL REPRESENTATION OF TRAFFIC MODEL INPUT AND OUTPUT

SUNDAY EASTBOUND DIRECTION

