

IH 94: USH 41 AND IH 43 (MILWAUKEE COUNTY) NIGHTTIME 2 LANE CLOSURE NO DIVERSION ROUTE (MAX QUEUE METHOD)	OCTOBER
	Analyzed for 2009 Construction Season

SUMMARY OF TRAFFIC MODEL OUTPUT

MON-THUR WESTBOUND DIRECTION

TIME OF DAY	FLOWS AND CAPACITY IN VEH/HR						AVERAGE SPEEDS IN MPH				
	MAIN ROUTE		SITE CAPA CITY	FLOW		AV.DEL PER VEH (MINS)	AVERAGE QUEUE (VEH)	MAIN ROUTE		SITE	
	DEMAND FLOW	PCT HEAVY		MAIN ROUTE	'DIVER TED'			WITHOUT WORK ZONE	WITH WORK ZONE		
MID-1 AM	614	0.0	1500	614	0	0.55	0	70.0	53.7	43.1	
1-2 AM	380	0.0	1500	380	0	0.52	0	70.2	54.5	44.0	
2-3 AM	301	0.0	1500	301	0	0.51	0	70.2	54.6	44.3	
3-4 AM	273	0.0	1500	273	0	0.51	0	70.2	54.8	44.4	
4-5 AM	514	0.0	1500	514	0	0.53	0	70.1	54.0	43.5	
5-6 AM	1621	0.0	OFF	1621	0	0.00	0	68.7	68.7	68.7	
6-7 AM	3837	0.0	OFF	3837	0	0.00	0	64.6	64.6	64.6	
7-8 AM	5370	0.0	OFF	5370	0	0.00	0	54.2	54.2	54.2	
8-9 AM	4442	0.0	OFF	4442	0	0.00	0	60.5	60.5	60.5	
9-10 AM	3360	0.0	OFF	3360	0	0.00	0	66.6	66.6	66.6	
10-11 AM	3343	0.0	OFF	3343	0	0.00	0	66.6	66.6	66.6	
11AM-NOON	3889	0.0	OFF	3889	0	0.00	0	64.3	64.3	64.3	
NOON-1PM	3993	0.0	OFF	3993	0	0.00	0	63.6	63.6	63.6	
1-2 PM	3898	0.0	OFF	3898	0	0.00	0	64.2	64.2	64.2	
2-3 PM	4788	0.0	OFF	4788	0	0.00	0	58.1	58.1	58.1	
3-4 PM	5188	0.0	OFF	5188	0	0.00	0	55.4	55.4	55.4	
4-5 PM	5097	0.0	OFF	5097	0	0.00	0	56.0	56.0	56.0	
5-6 PM	4946	0.0	OFF	4946	0	0.00	0	57.1	57.1	57.1	
6-7 PM	4354	0.0	OFF	4354	0	0.00	0	61.1	61.1	61.1	
7-8 PM	3018	0.0	1499	1570	1448	17.10+	427	67.0	7.6	36.6	
8-9 PM	2547	0.0	1499	1681	866	14.34+	374	67.6	8.6	35.3	
9-10 PM	2159	0.0	1499	1687	472	16.08+	394	68.1	7.8	30.8	
10-11 PM	1524	0.0	1499	1424	99	16.25+	396	68.9	7.8	30.8	
11PM-MID	1129	0.0	1499	1129	0	6.74	205	69.3	14.9	34.7	

"OFF" INDICATES NO ROAD WORK (ALL LANES OPEN TO TRAFFIC)

+ INDICATES QUEUEING EXCEEDS USER-SPECIFIED MAXIMUM LIMIT

----- SITE BREAKDOWN DELAYS -----	
BREAKDOWN DURATION (MINS)	0
RANGE OF QUEUE DELAY - MIN (VEH-H) MAX	0.0
AV BREAKDOWNS PER DAY	0.00
AV QUEUE DELAY/DAY (VEH-H)	0.0
AV TOTAL DELAY/DAY (VEH-H)	0.0

----- SITE ACCIDENT DELAYS -----	
BREAKDOWN DURATION (MINS)	0
RANGE OF QUEUE DELAY - MIN (VEH-H) MAX	0
AV BREAKDOWNS PER DAY	0
AV QUEUE DELAY/DAY (VEH-H)	0
AV TOTAL DELAY/DAY (VEH-H)	0

AVERAGE ACCIDENT NUMBERS (PIA/DAY)	
MAIN ROUTE WITHOUT WORKS	0.0236
MAIN ROUTE WITH WORKS	0.0220
'DIVERSION'	0.0022
<small>PIA: Personal Injury Accidents</small>	
IMPACTS ON ROAD USERS	
ROAD USER COSTS PER DAY	\$36,031
CONGESTED HOURS PER DAY*	4

*Delays Exceeding User-Specified Maximum

**IH 94: USH 41 AND IH 43 (MILWAUKEE COUNTY)
NIGHTTIME 2 LANE CLOSURE
NO DIVERSION ROUTE (MAX QUEUE METHOD)**

OCTOBER

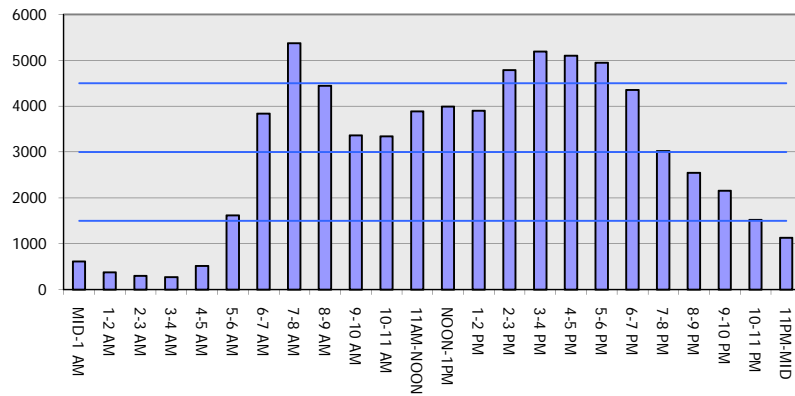
Analyzed for 2009
Construction Season

GRAPHICAL REPRESENTATION OF TRAFFIC MODEL INPUT AND OUTPUT

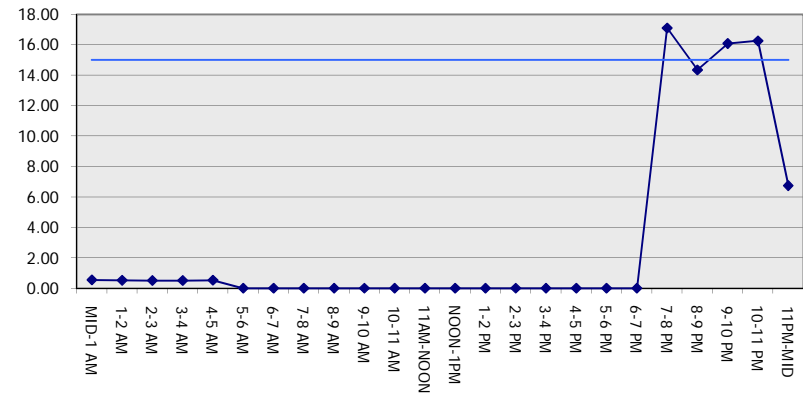
MON-THUR

WESTBOUND DIRECTION

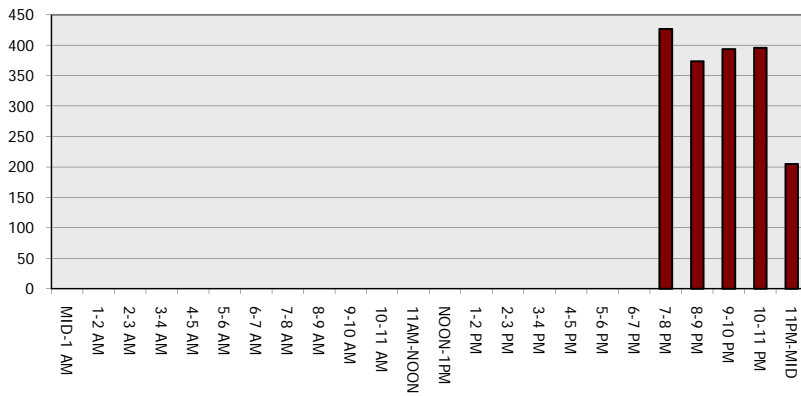
Main Route - Traffic Demand (Vehicles Per Hour)



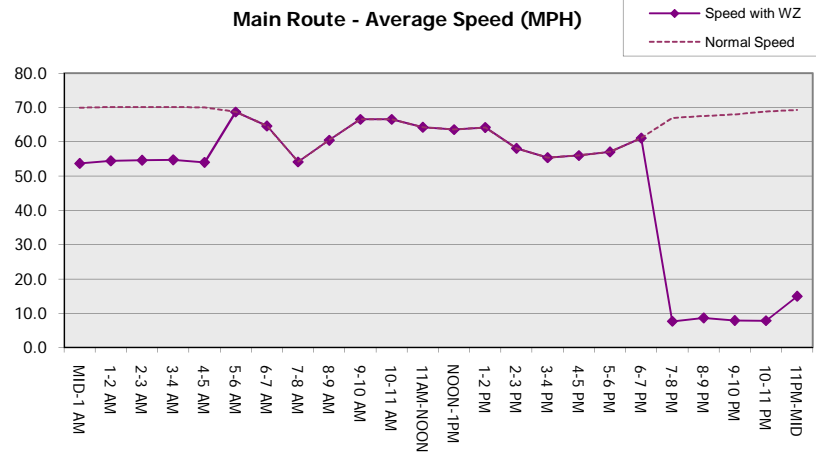
Main Route Average Delay Per Vehicle (Minutes)



Main Route - Average Queue Length (Vehicles)



Main Route - Average Speed (MPH)



IH 94: USH 41 AND IH 43 (MILWAUKEE COUNTY) NIGHTTIME 2 LANE CLOSURE NO DIVERSION ROUTE (MAX QUEUE METHOD)	OCTOBER
	Analyzed for 2009 Construction Season

SUMMARY OF TRAFFIC MODEL OUTPUT

MON-THUR EASTBOUND DIRECTION

TIME OF DAY	FLOWS AND CAPACITY IN VEH/HR							AVERAGE SPEEDS IN MPH		
	MAIN ROUTE		SITE CAPA CITY	FLOW		AV.DEL PER VEH (MINS)	AVERAGE QUEUE (VEH)	MAIN ROUTE		SITE
	DEMAND FLOW	PCT HEAVY		MAIN ROUTE	'DIVER TED'			WITHOUT WORK ZONE	WITH WORK ZONE	
MID-1 AM	505	0.0	1500	505	0	0.53	0	70.1	54.0	43.5
1-2 AM	340	0.0	1500	340	0	0.51	0	70.2	54.5	44.2
2-3 AM	279	0.0	1500	279	0	0.51	0	70.2	54.7	44.3
3-4 AM	278	0.0	1500	278	0	0.51	0	70.2	54.7	44.3
4-5 AM	487	0.0	1500	487	0	0.53	0	70.1	54.1	43.5
5-6 AM	1890	0.0	OFF	1890	0	0.00	0	68.4	68.4	68.4
6-7 AM	4133	0.0	OFF	4133	0	0.00	0	62.6	62.6	62.6
7-8 AM	4431	0.0	OFF	4431	0	0.00	0	60.6	60.6	60.6
8-9 AM	4282	0.0	OFF	4282	0	0.00	0	61.6	61.6	61.6
9-10 AM	3588	0.0	OFF	3588	0	0.00	0	66.3	66.3	66.3
10-11 AM	3215	0.0	OFF	3215	0	0.00	0	66.8	66.8	66.8
11AM-NOON	3354	0.0	OFF	3354	0	0.00	0	66.6	66.6	66.6
NOON-1PM	3422	0.0	OFF	3422	0	0.00	0	66.5	66.5	66.5
1-2 PM	3166	0.0	OFF	3166	0	0.00	0	66.8	66.8	66.8
2-3 PM	2903	0.0	OFF	2903	0	0.00	0	67.1	67.1	67.1
3-4 PM	3689	0.0	OFF	3689	0	0.00	0	65.6	65.6	65.6
4-5 PM	3986	0.0	OFF	3986	0	0.00	0	63.7	63.7	63.7
5-6 PM	4086	0.0	OFF	4086	0	0.00	0	63.0	63.0	63.0
6-7 PM	3702	0.0	OFF	3702	0	0.00	0	65.6	65.6	65.6
7-8 PM	2713	0.0	1499	1671	1042	14.85+	374	67.4	8.3	35.9
8-9 PM	2231	0.0	1499	1685	546	15.03+	377	67.9	8.3	32.7
9-10 PM	2152	0.0	1499	1504	648	16.76+	410	68.1	7.6	30.8
10-11 PM	1508	0.0	1500	1494	14	16.05+	391	68.9	7.8	30.8
11PM-MID	975	0.0	1499	975	0	3.22	145	69.5	25.2	37.4

"OFF" INDICATES NO ROAD WORK (ALL LANES OPEN TO TRAFFIC)

+ INDICATES QUEUEING EXCEEDS USER-SPECIFIED MAXIMUM LIMIT

----- SITE BREAKDOWN DELAYS -----	
BREAKDOWN DURATION (MINS)	0
RANGE OF QUEUE DELAY - MIN (VEH-H) MAX	0.0
AV BREAKDOWNS PER DAY	0.00
AV QUEUE DELAY/DAY (VEH-H)	0.0
AV TOTAL DELAY/DAY (VEH-H)	0.0

----- SITE ACCIDENT DELAYS -----	
BREAKDOWN DURATION (MINS)	0
RANGE OF QUEUE DELAY - MIN (VEH-H) MAX	0
AV BREAKDOWNS PER DAY	0
AV QUEUE DELAY/DAY (VEH-H)	0
AV TOTAL DELAY/DAY (VEH-H)	0

AVERAGE ACCIDENT NUMBERS (PIA/DAY)	
MAIN ROUTE WITHOUT WORKS	0.0205
MAIN ROUTE WITH WORKS	0.0191
'DIVERSION'	0.0017

PIA: Personal Injury Accidents

ECONOMIC IMPACT ON ROAD USERS	
ROAD USER COSTS PER DAY	\$31,857
CONGESTED HOURS PER DAY*	4

*Delays Exceeding User-Specified Maximum

**IH 94: USH 41 AND IH 43 (MILWAUKEE COUNTY)
 NIGHTTIME 2 LANE CLOSURE
 NO DIVERSION ROUTE (MAX QUEUE METHOD)**

OCTOBER

Analyzed for 2009
 Construction Season

GRAPHICAL REPRESENTATION OF TRAFFIC MODEL INPUT AND OUTPUT

MON-THUR EASTBOUND DIRECTION

