

<b>IH 94: USH 41 AND IH 43 (MILWAUKEE COUNTY)                  NIGHTTIME CLOSURE                  NO DIVERSION ROUTE (MAX QUEUE METHOD)</b>	<b>OCTOBER</b>
	Analyzed for 2009 Construction Season

**SUMMARY OF TRAFFIC MODEL OUTPUT**

MON-THUR                  WESTBOUND DIRECTION

TIME OF DAY	FLOWS AND CAPACITY IN VEH/HR						AVERAGE SPEEDS IN MPH			
	MAIN ROUTE		SITE CAPA CITY	FLOW		AV.DEL PER VEH (MINS)	AVERAGE QUEUE (VEH)	MAIN ROUTE		SITE
	DEMAND FLOW	PCT HEAVY		MAIN ROUTE	'DIVER TED'			WITHOUT WORK ZONE	WITH WORK ZONE	
MID-1 AM	614	0.0	3000	614	0	0.36	0	70.0	58.4	49.7
1-2 AM	380	0.0	3000	380	0	0.36	0	70.2	58.5	49.7
2-3 AM	301	0.0	3000	301	0	0.36	0	70.2	58.5	49.7
3-4 AM	273	0.0	3000	273	0	0.36	0	70.2	58.5	49.7
4-5 AM	514	0.0	3000	514	0	0.36	0	70.1	58.4	49.7
5-6 AM	1621	0.0	OFF	1621	0	0.00	0	68.7	68.7	68.7
6-7 AM	3837	0.0	OFF	3837	0	0.00	0	64.6	64.6	64.6
7-8 AM	5370	0.0	OFF	5370	0	0.00	0	54.2	54.2	54.2
8-9 AM	4442	0.0	OFF	4442	0	0.00	0	60.5	60.5	60.5
9-10 AM	3360	0.0	OFF	3360	0	0.00	0	66.6	66.6	66.6
10-11 AM	3343	0.0	OFF	3343	0	0.00	0	66.6	66.6	66.6
11AM-NOON	3889	0.0	OFF	3889	0	0.00	0	64.3	64.3	64.3
NOON-1PM	3993	0.0	OFF	3993	0	0.00	0	63.6	63.6	63.6
1-2 PM	3898	0.0	OFF	3898	0	0.00	0	64.2	64.2	64.2
2-3 PM	4788	0.0	OFF	4788	0	0.00	0	58.1	58.1	58.1
3-4 PM	5188	0.0	OFF	5188	0	0.00	0	55.4	55.4	55.4
4-5 PM	5097	0.0	OFF	5097	0	0.00	0	56.0	56.0	56.0
5-6 PM	4946	0.0	OFF	4946	0	0.00	0	57.1	57.1	57.1
6-7 PM	4354	0.0	OFF	4354	0	0.00	0	61.1	61.1	61.1
7-8 PM	3018	0.0	2999	3018	0	1.88	65	67.0	33.5	38.0
8-9 PM	2547	0.0	3000	2547	0	0.44	0	67.6	54.7	45.8
9-10 PM	2159	0.0	3000	2159	0	0.33	0	68.1	57.7	49.7
10-11 PM	1524	0.0	3000	1524	0	0.34	0	68.9	58.0	49.7
11PM-MID	1129	0.0	3000	1129	0	0.35	0	69.3	58.2	49.7

**"OFF" INDICATES NO ROAD WORK (ALL LANES OPEN TO TRAFFIC)**

*----- SITE BREAKDOWN DELAYS -----*	
BREAKDOWN DURATION (MINS)	0
RANGE OF QUEUE DELAY - MIN (VEH-H) MAX	0.0
AV BREAKDOWNS PER DAY	0.00
AV QUEUE DELAY/DAY (VEH-H)	0.0
AV TOTAL DELAY/DAY (VEH-H)	0.0

*----- SITE ACCIDENT DELAYS -----*	
BREAKDOWN DURATION (MINS)	0
RANGE OF QUEUE DELAY - MIN (VEH-H) MAX	0
AV BREAKDOWNS PER DAY	0
AV QUEUE DELAY/DAY (VEH-H)	0
AV TOTAL DELAY/DAY (VEH-H)	0

AVERAGE ACCIDENT NUMBERS (PIA/DAY)	
MAIN ROUTE WITHOUT WORKS	0.0236
MAIN ROUTE WITH WORKS	0.0228
'DIVERSION'	0.0000
<small>PIA: Personal Injury Accidents</small>	
IMPACTS ON ROAD USERS	
ROAD USER COSTS PER DAY	\$1,906
CONGESTED HOURS PER DAY*	0

\*Delays Exceeding User-Specified Maximum

**IH 94: USH 41 AND IH 43 (MILWAUKEE COUNTY)  
NIGHTTIME CLOSURE  
NO DIVERSION ROUTE (MAX QUEUE METHOD)**

**OCTOBER**

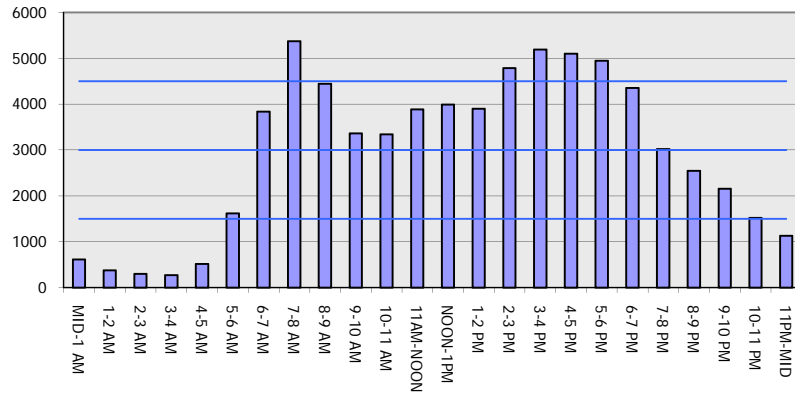
Analyzed for 2009  
Construction Season

**GRAPHICAL REPRESENTATION OF TRAFFIC MODEL INPUT AND OUTPUT**

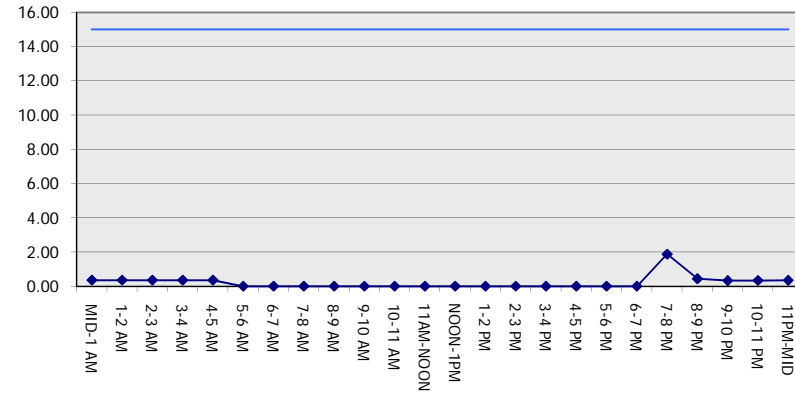
**MON-THUR**

**WESTBOUND DIRECTION**

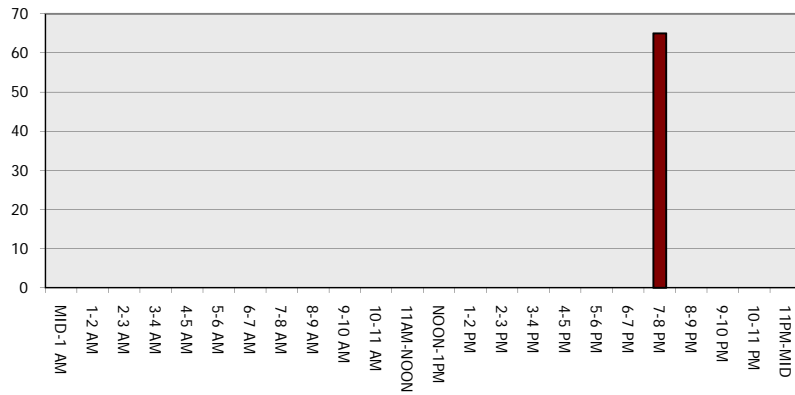
**Main Route - Traffic Demand (Vehicles Per Hour)**



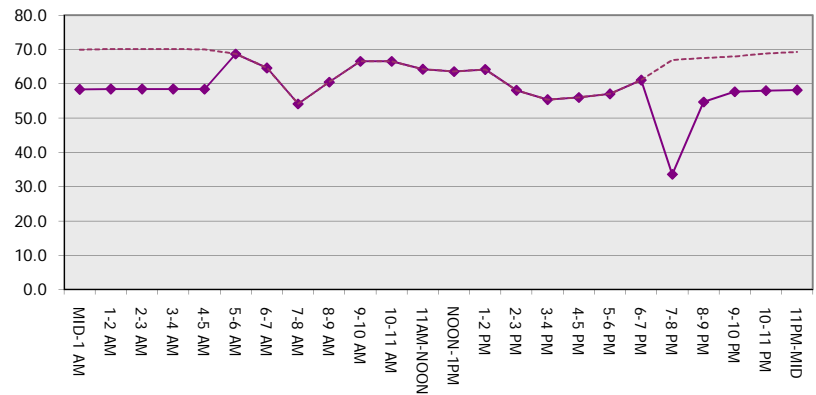
**Main Route Average Delay Per Vehicle (Minutes)**



**Main Route - Average Queue Length (Vehicles)**



**Main Route - Average Speed (MPH)**



<b>IH 94: USH 41 AND IH 43 (MILWAUKEE COUNTY)                  NIGHTTIME CLOSURE                  NO DIVERSION ROUTE (MAX QUEUE METHOD)</b>	<b>OCTOBER</b>
	Analyzed for 2009 Construction Season

**SUMMARY OF TRAFFIC MODEL OUTPUT**

MON-THUR                      EASTBOUND DIRECTION

TIME OF DAY	FLOWS AND CAPACITY IN VEH/HR							AVERAGE SPEEDS IN MPH		
	MAIN ROUTE		SITE CAPA CITY	FLOW		AV.DEL PER VEH (MINS)	AVERAGE QUEUE (VEH)	MAIN ROUTE		SITE
	DEMAND FLOW	PCT HEAVY		MAIN ROUTE	'DIVER TED'			WITHOUT WORK ZONE	WITH WORK ZONE	
MID-1 AM	505	0.0	3000	505	0	0.36	0	70.1	58.4	49.7
1-2 AM	340	0.0	3000	340	0	0.36	0	70.2	58.5	49.7
2-3 AM	279	0.0	3000	279	0	0.36	0	70.2	58.5	49.7
3-4 AM	278	0.0	3000	278	0	0.36	0	70.2	58.5	49.7
4-5 AM	487	0.0	3000	487	0	0.36	0	70.1	58.4	49.7
5-6 AM	1890	0.0	OFF	1890	0	0.00	0	68.4	68.4	68.4
6-7 AM	4133	0.0	OFF	4133	0	0.00	0	62.6	62.6	62.6
7-8 AM	4431	0.0	OFF	4431	0	0.00	0	60.6	60.6	60.6
8-9 AM	4282	0.0	OFF	4282	0	0.00	0	61.6	61.6	61.6
9-10 AM	3588	0.0	OFF	3588	0	0.00	0	66.3	66.3	66.3
10-11 AM	3215	0.0	OFF	3215	0	0.00	0	66.8	66.8	66.8
11AM-NOON	3354	0.0	OFF	3354	0	0.00	0	66.6	66.6	66.6
NOON-1PM	3422	0.0	OFF	3422	0	0.00	0	66.5	66.5	66.5
1-2 PM	3166	0.0	OFF	3166	0	0.00	0	66.8	66.8	66.8
2-3 PM	2903	0.0	OFF	2903	0	0.00	0	67.1	67.1	67.1
3-4 PM	3689	0.0	OFF	3689	0	0.00	0	65.6	65.6	65.6
4-5 PM	3986	0.0	OFF	3986	0	0.00	0	63.7	63.7	63.7
5-6 PM	4086	0.0	OFF	4086	0	0.00	0	63.0	63.0	63.0
6-7 PM	3702	0.0	OFF	3702	0	0.00	0	65.6	65.6	65.6
7-8 PM	2713	0.0	3000	2713	0	0.54	0	67.4	52.2	42.2
8-9 PM	2231	0.0	3000	2231	0	0.33	0	67.9	57.7	49.7
9-10 PM	2152	0.0	3000	2152	0	0.33	0	68.1	57.7	49.7
10-11 PM	1508	0.0	3000	1508	0	0.34	0	68.9	58.0	49.7
11PM-MID	975	0.0	3000	975	0	0.35	0	69.5	58.2	49.7

**"OFF" INDICATES NO ROAD WORK (ALL LANES OPEN TO TRAFFIC)**

BREAKDOWN DURATION (MINS)	0
RANGE OF QUEUE DELAY - MIN (VEH-H) MAX	0.0
AV BREAKDOWNS PER DAY	0.00
AV QUEUE DELAY/DAY (VEH-H)	0.0
AV TOTAL DELAY/DAY (VEH-H)	0.0

BREAKDOWN DURATION (MINS)	0
RANGE OF QUEUE DELAY - MIN (VEH-H) MAX	0
AV BREAKDOWNS PER DAY	0
AV QUEUE DELAY/DAY (VEH-H)	0
AV TOTAL DELAY/DAY (VEH-H)	0

MAIN ROUTE WITHOUT WORKS	0.0205
MAIN ROUTE WITH WORKS	0.0197
'DIVERSION'	0.0000

PIA: Personal Injury Accidents

ROAD USER COSTS PER DAY	\$924
CONGESTED HOURS PER DAY*	0

\*Delays Exceeding User-Specified Maximum

**IH 94: USH 41 AND IH 43 (MILWAUKEE COUNTY)  
NIGHTTIME CLOSURE  
NO DIVERSION ROUTE (MAX QUEUE METHOD)**

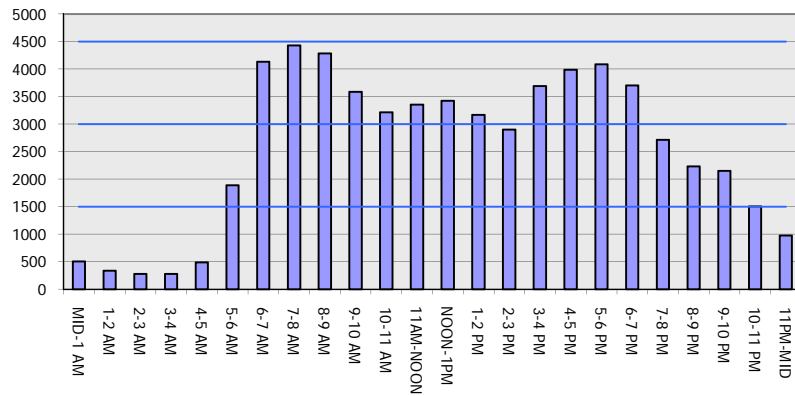
**OCTOBER**

Analyzed for 2009  
Construction Season

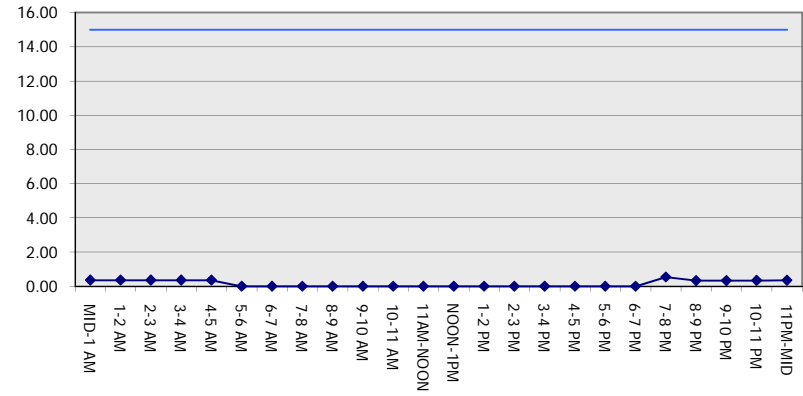
**GRAPHICAL REPRESENTATION OF TRAFFIC MODEL INPUT AND OUTPUT**

**MON-THUR EASTBOUND DIRECTION**

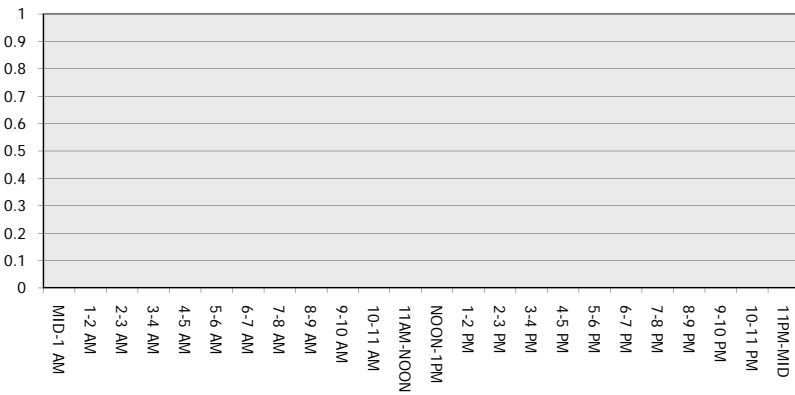
**Main Route - Traffic Demand (Vehicles Per Hour)**



**Main Route Average Delay Per Vehicle (Minutes)**



**Main Route - Average Queue Length (Vehicles)**



**Main Route - Average Speed (MPH)**

