

IH 94: USH 41 AND IH 43 (MILWAUKEE COUNTY) NIGHTTIME CLOSURE NO DIVERSION ROUTE (MAX QUEUE METHOD)	OCTOBER
	Analyzed for 2009 Construction Season

SUMMARY OF TRAFFIC MODEL OUTPUT

FRIDAY WESTBOUND DIRECTION

TIME OF DAY	FLOWS AND CAPACITY IN VEH/HR						AVERAGE SPEEDS IN MPH			
	MAIN ROUTE		SITE CAPA CITY	FLOW		AV.DEL PER VEH (MINS)	AVERAGE QUEUE (VEH)	MAIN ROUTE		SITE
	DEMAND FLOW	PCT HEAVY		MAIN ROUTE	'DIVER TED'			WITHOUT WORK ZONE	WITH WORK ZONE	
MID-1 AM	740	0.0	3000	740	0	0.35	0	69.8	58.3	49.7
1-2 AM	538	0.0	3000	538	0	0.36	0	70.0	58.4	49.7
2-3 AM	451	0.0	3000	451	0	0.36	0	70.2	58.5	49.7
3-4 AM	344	0.0	3000	344	0	0.36	0	70.2	58.5	49.7
4-5 AM	623	0.0	3000	623	0	0.36	0	70.0	58.4	49.7
5-6 AM	1758	0.0	OFF	1758	0	0.00	0	68.6	68.6	68.6
6-7 AM	3790	0.0	OFF	3790	0	0.00	0	65.0	65.0	65.0
7-8 AM	5327	0.0	OFF	5327	0	0.00	0	54.5	54.5	54.5
8-9 AM	4416	0.0	OFF	4416	0	0.00	0	60.7	60.7	60.7
9-10 AM	3764	0.0	OFF	3764	0	0.00	0	65.1	65.1	65.1
10-11 AM	3356	0.0	OFF	3356	0	0.00	0	66.6	66.6	66.6
11AM-NOON	4412	0.0	OFF	4412	0	0.00	0	60.7	60.7	60.7
NOON-1PM	4073	0.0	OFF	4073	0	0.00	0	63.0	63.0	63.0
1-2 PM	4091	0.0	OFF	4091	0	0.00	0	62.9	62.9	62.9
2-3 PM	4421	0.0	OFF	4421	0	0.00	0	60.7	60.7	60.7
3-4 PM	4325	0.0	OFF	4325	0	0.00	0	61.3	61.3	61.3
4-5 PM	4103	0.0	OFF	4103	0	0.00	0	62.8	62.8	62.8
5-6 PM	3513	0.0	OFF	3513	0	0.00	0	66.4	66.4	66.4
6-7 PM	2479	0.0	OFF	2479	0	0.00	0	67.6	67.6	67.6
7-8 PM	2164	0.0	3000	2164	0	0.33	0	68.1	57.7	49.7
8-9 PM	1697	0.0	3000	1697	0	0.34	0	68.6	57.9	49.7
9-10 PM	1849	0.0	3000	1849	0	0.34	0	68.4	57.8	49.7
10-11 PM	1620	0.0	3000	1620	0	0.34	0	68.7	57.9	49.7
11PM-MID	1770	0.0	3000	1770	0	0.34	0	68.6	57.9	49.7

"OFF" INDICATES NO ROAD WORK (ALL LANES OPEN TO TRAFFIC)

----- SITE BREAKDOWN DELAYS -----	
BREAKDOWN DURATION (MINS)	0
RANGE OF QUEUE DELAY - MIN (VEH-H) MAX	0.0
AV BREAKDOWNS PER DAY	0.00
AV QUEUE DELAY/DAY (VEH-H)	0.0
AV TOTAL DELAY/DAY (VEH-H)	0.0

----- SITE ACCIDENT DELAYS -----	
BREAKDOWN DURATION (MINS)	0
RANGE OF QUEUE DELAY - MIN (VEH-H) MAX	0
AV BREAKDOWNS PER DAY	0
AV QUEUE DELAY/DAY (VEH-H)	0
AV TOTAL DELAY/DAY (VEH-H)	0

AVERAGE ACCIDENT NUMBERS (PIA/DAY)	
MAIN ROUTE WITHOUT WORKS	0.0219
MAIN ROUTE WITH WORKS	0.0212
'DIVERSION'	0.0000
PIA: Personal Injury Accidents	
IMPACTS ON ROAD USERS	
ROAD USER COSTS PER DAY	\$869
CONGESTED HOURS PER DAY*	0

*Delays Exceeding User-Specified Maximum

**IH 94: USH 41 AND IH 43 (MILWAUKEE COUNTY)
NIGHTTIME CLOSURE
NO DIVERSION ROUTE (MAX QUEUE METHOD)**

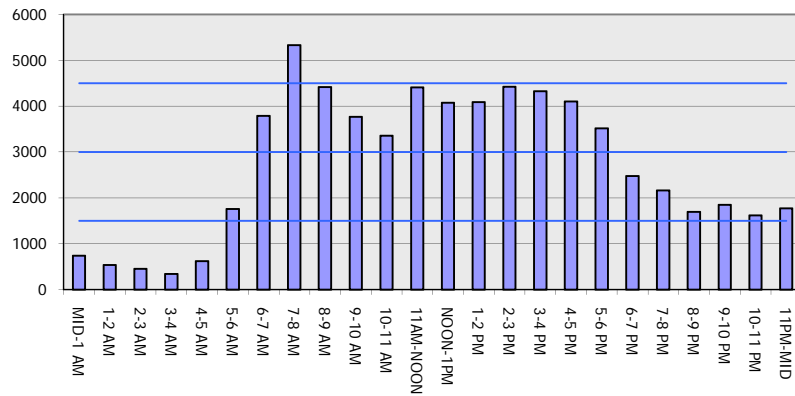
OCTOBER

Analyzed for 2009
Construction Season

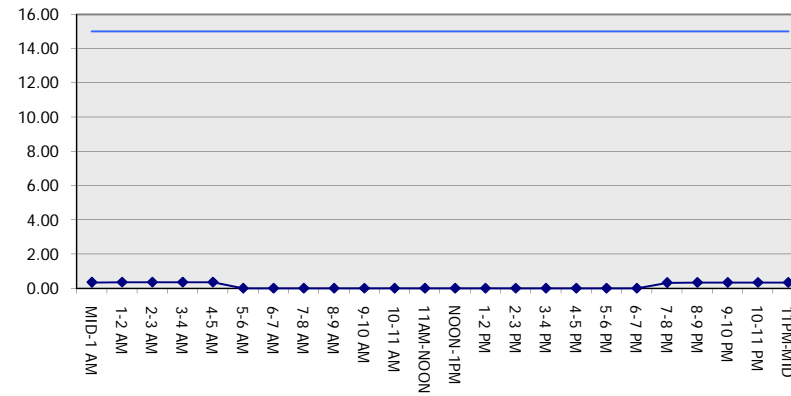
GRAPHICAL REPRESENTATION OF TRAFFIC MODEL INPUT AND OUTPUT

FRIDAY WESTBOUND DIRECTION

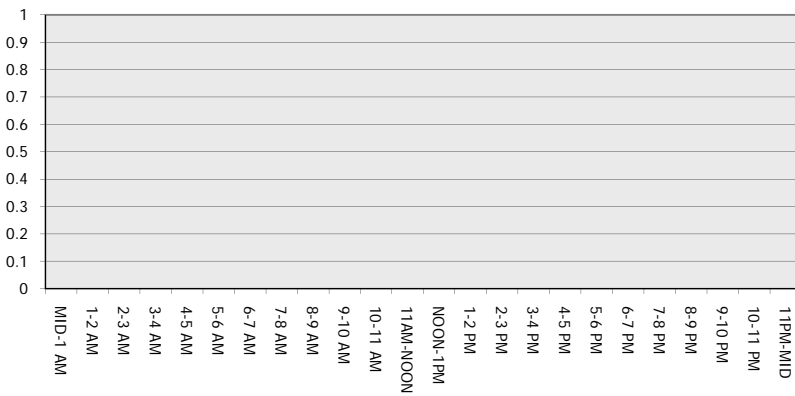
Main Route - Traffic Demand (Vehicles Per Hour)



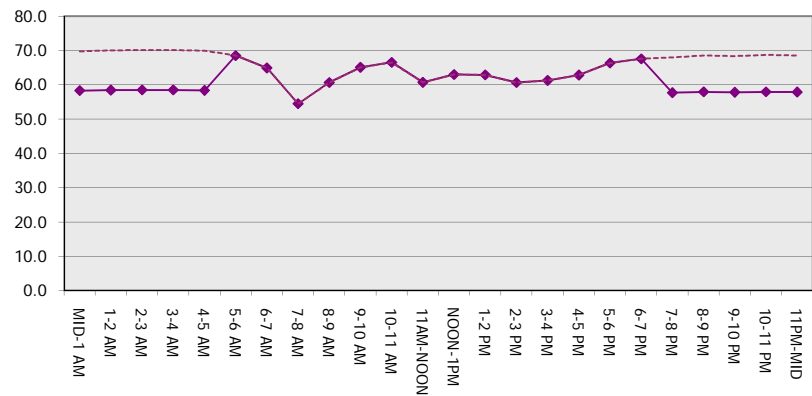
Main Route Average Delay Per Vehicle (Minutes)



Main Route - Average Queue Length (Vehicles)



Main Route - Average Speed (MPH)



IH 94: USH 41 AND IH 43 (MILWAUKEE COUNTY) NIGHTTIME CLOSURE NO DIVERSION ROUTE (MAX QUEUE METHOD)	OCTOBER
	Analyzed for 2009 Construction Season

SUMMARY OF TRAFFIC MODEL OUTPUT

FRIDAY EASTBOUND DIRECTION

TIME OF DAY	FLOWS AND CAPACITY IN VEH/HR						AVERAGE SPEEDS IN MPH			
	MAIN ROUTE		SITE CAPA CITY	FLOW		AV.DEL PER VEH (MINS)	AVERAGE QUEUE (VEH)	MAIN ROUTE		SITE
	DEMAND FLOW	PCT HEAVY		MAIN ROUTE	'DIVER TED'			WITHOUT WORK ZONE	WITH WORK ZONE	
MID-1 AM	593	0.0	3000	593	0	0.36	0	70.0	58.4	49.7
1-2 AM	374	0.0	3000	374	0	0.36	0	70.2	58.5	49.7
2-3 AM	312	0.0	3000	312	0	0.36	0	70.2	58.5	49.7
3-4 AM	284	0.0	3000	284	0	0.36	0	70.2	58.5	49.7
4-5 AM	477	0.0	3000	477	0	0.36	0	70.1	58.4	49.7
5-6 AM	1765	0.0	OFF	1765	0	0.00	0	68.6	68.6	68.6
6-7 AM	4098	0.0	OFF	4098	0	0.00	0	62.8	62.8	62.8
7-8 AM	4599	0.0	OFF	4599	0	0.00	0	59.4	59.4	59.4
8-9 AM	4136	0.0	OFF	4136	0	0.00	0	62.6	62.6	62.6
9-10 AM	3324	0.0	OFF	3324	0	0.00	0	66.6	66.6	66.6
10-11 AM	2857	0.0	OFF	2857	0	0.00	0	67.2	67.2	67.2
11AM-NOON	3532	0.0	OFF	3532	0	0.00	0	66.3	66.3	66.3
NOON-1PM	3657	0.0	OFF	3657	0	0.00	0	65.9	65.9	65.9
1-2 PM	3695	0.0	OFF	3695	0	0.00	0	65.6	65.6	65.6
2-3 PM	3796	0.0	OFF	3796	0	0.00	0	64.9	64.9	64.9
3-4 PM	3707	0.0	OFF	3707	0	0.00	0	65.5	65.5	65.5
4-5 PM	4060	0.0	OFF	4060	0	0.00	0	63.1	63.1	63.1
5-6 PM	4066	0.0	OFF	4066	0	0.00	0	63.1	63.1	63.1
6-7 PM	3455	0.0	OFF	3455	0	0.00	0	66.4	66.4	66.4
7-8 PM	3055	0.0	2999	3055	0	1.72	55	66.9	34.9	37.3
8-9 PM	2553	0.0	3000	2553	0	0.50	3	67.6	53.3	45.5
9-10 PM	2598	0.0	3000	2598	0	0.47	0	67.5	54.0	44.6
10-11 PM	2079	0.0	3000	2079	0	0.33	0	68.1	57.8	49.7
11PM-MID	1642	0.0	3000	1642	0	0.34	0	68.7	57.9	49.7

"OFF" INDICATES NO ROAD WORK (ALL LANES OPEN TO TRAFFIC)

----- SITE BREAKDOWN DELAYS -----	
BREAKDOWN DURATION (MINS)	0
RANGE OF QUEUE DELAY - MIN (VEH-H) MAX	0.0
AV BREAKDOWNS PER DAY	0.00
AV QUEUE DELAY/DAY (VEH-H)	0.0
AV TOTAL DELAY/DAY (VEH-H)	0.0

----- SITE ACCIDENT DELAYS -----	
BREAKDOWN DURATION (MINS)	0
RANGE OF QUEUE DELAY - MIN (VEH-H) MAX	0
AV BREAKDOWNS PER DAY	0
AV QUEUE DELAY/DAY (VEH-H)	0
AV TOTAL DELAY/DAY (VEH-H)	0

AVERAGE ACCIDENT NUMBERS (PIA/DAY)	
MAIN ROUTE WITHOUT WORKS	0.0216
MAIN ROUTE WITH WORKS	0.0207
'DIVERSION'	0.0000

PIA: Personal Injury Accidents

ECONOMIC IMPACT ON ROAD USERS	
ROAD USER COSTS PER DAY	\$2,095
CONGESTED HOURS PER DAY*	0

*Delays Exceeding User-Specified Maximum

**IH 94: USH 41 AND IH 43 (MILWAUKEE COUNTY)
NIGHTTIME CLOSURE
NO DIVERSION ROUTE (MAX QUEUE METHOD)**

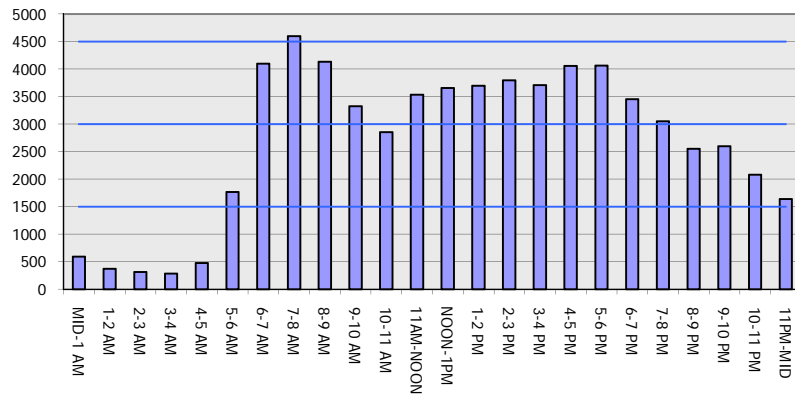
OCTOBER

Analyzed for 2009
Construction Season

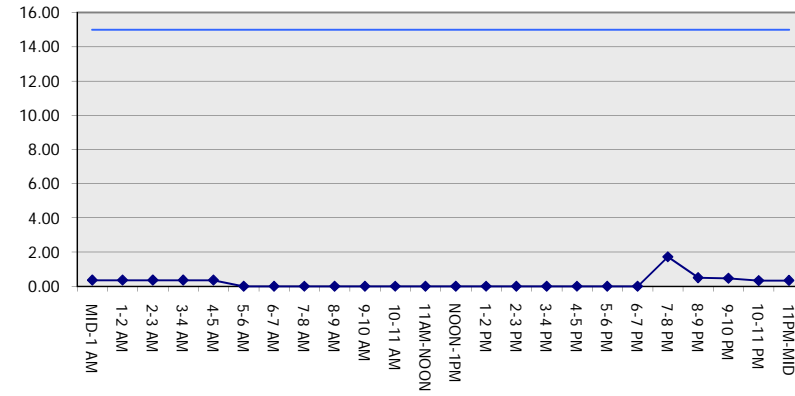
GRAPHICAL REPRESENTATION OF TRAFFIC MODEL INPUT AND OUTPUT

FRIDAY EASTBOUND DIRECTION

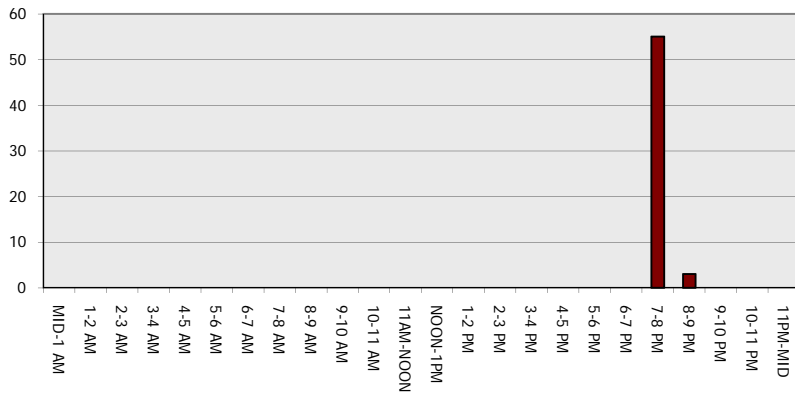
Main Route - Traffic Demand (Vehicles Per Hour)



Main Route Average Delay Per Vehicle (Minutes)



Main Route - Average Queue Length (Vehicles)



Main Route - Average Speed (MPH)

