

IH 94: USH 41 AND IH 43 (MILWAUKEE COUNTY) NIGHTTIME CLOSURE NO DIVERSION ROUTE (MAX QUEUE METHOD)	AUGUST
	Analyzed for 2009 Construction Season

SUMMARY OF TRAFFIC MODEL OUTPUT

SUNDAY WESTBOUND DIRECTION

TIME OF DAY	FLOWS AND CAPACITY IN VEH/HR						AVERAGE SPEEDS IN MPH				
	MAIN ROUTE		SITE CAPA CITY	FLOW		AV.DEL PER VEH (MINS)	AVERAGE QUEUE (VEH)	MAIN ROUTE		SITE	
	DEMAND FLOW	PCT HEAVY		MAIN ROUTE	'DIVER TED'			WITHOUT WORK ZONE	WITH WORK ZONE		
MID-1 AM	2170	0.0	3000	2170	0	0.33	0	68.1	57.7	49.7	
1-2 AM	1458	0.0	3000	1458	0	0.34	0	68.9	58.0	49.7	
2-3 AM	1497	0.0	3000	1497	0	0.34	0	68.9	58.0	49.7	
3-4 AM	755	0.0	3000	755	0	0.35	0	69.8	58.3	49.7	
4-5 AM	481	0.0	3000	481	0	0.36	0	70.1	58.4	49.7	
5-6 AM	558	0.0	3000	558	0	0.36	0	70.0	58.4	49.7	
6-7 AM	954	0.0	3000	954	0	0.35	0	69.6	58.2	49.7	
7-8 AM	1216	0.0	3000	1216	0	0.35	0	69.2	58.1	49.7	
8-9 AM	1284	0.0	3000	1284	0	0.35	0	69.1	58.1	49.7	
9-10 AM	2396	0.0	OFF	2396	0	0.00	0	67.8	67.8	67.8	
10-11 AM	3476	0.0	OFF	3476	0	0.00	0	66.4	66.4	66.4	
11AM-NOON	4191	0.0	OFF	4191	0	0.00	0	62.2	62.2	62.2	
NOON-1PM	4467	0.0	OFF	4467	0	0.00	0	60.4	60.4	60.4	
1-2 PM	4104	0.0	OFF	4104	0	0.00	0	62.8	62.8	62.8	
2-3 PM	4149	0.0	OFF	4149	0	0.00	0	62.5	62.5	62.5	
3-4 PM	4086	0.0	OFF	4086	0	0.00	0	63.0	63.0	63.0	
4-5 PM	3971	0.0	OFF	3971	0	0.00	0	63.7	63.7	63.7	
5-6 PM	3559	0.0	OFF	3559	0	0.00	0	66.3	66.3	66.3	
6-7 PM	3396	0.0	OFF	3396	0	0.00	0	66.5	66.5	66.5	
7-8 PM	3140	0.0	2999	3140	0	2.27	90	66.8	30.3	37.3	
8-9 PM	2745	0.0	2999	2745	0	1.30	51	67.3	39.7	40.4	
9-10 PM	2513	0.0	3000	2513	0	0.41	0	67.6	55.4	46.5	
10-11 PM	2354	0.0	3000	2354	0	0.33	0	67.8	57.6	49.7	
11PM-MID	1424	0.0	3000	1424	0	0.34	0	69.0	58.1	49.7	

"OFF" INDICATES NO ROAD WORK (ALL LANES OPEN TO TRAFFIC)

----- SITE BREAKDOWN DELAYS -----	
BREAKDOWN DURATION (MINS)	0
RANGE OF QUEUE DELAY - MIN (VEH-H) MAX	0.0
AV BREAKDOWNS PER DAY	0.00
AV QUEUE DELAY/DAY (VEH-H)	0.0
AV TOTAL DELAY/DAY (VEH-H)	0.0

----- SITE ACCIDENT DELAYS -----	
BREAKDOWN DURATION (MINS)	0
RANGE OF QUEUE DELAY - MIN (VEH-H) MAX	0
AV BREAKDOWNS PER DAY	0
AV QUEUE DELAY/DAY (VEH-H)	0
AV TOTAL DELAY/DAY (VEH-H)	0

AVERAGE ACCIDENT NUMBERS (PIA/DAY)	
MAIN ROUTE WITHOUT WORKS	0.0202
MAIN ROUTE WITH WORKS	0.0187
'DIVERSION'	0.0000
PIA: Personal Injury Accidents	
IMPACTS ON ROAD USERS	
ROAD USER COSTS PER DAY	\$4,217
CONGESTED HOURS PER DAY*	0

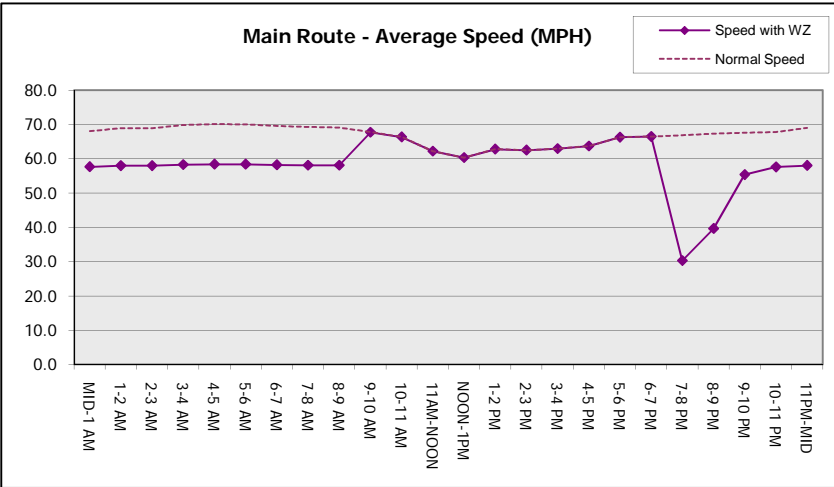
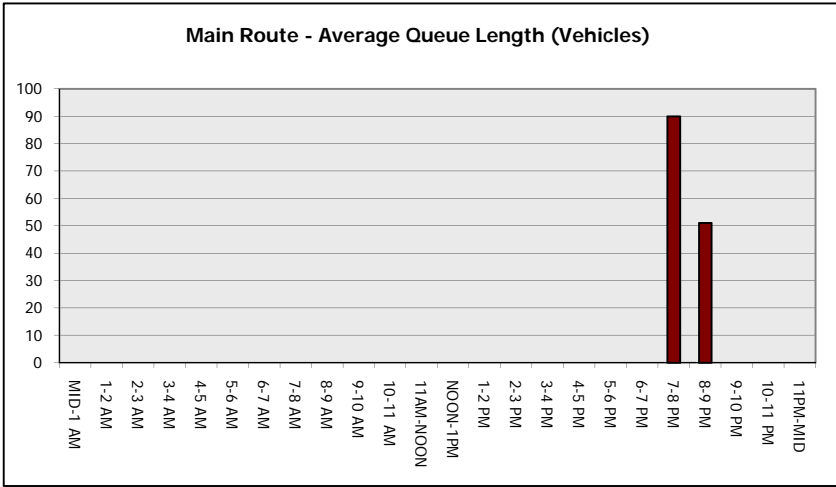
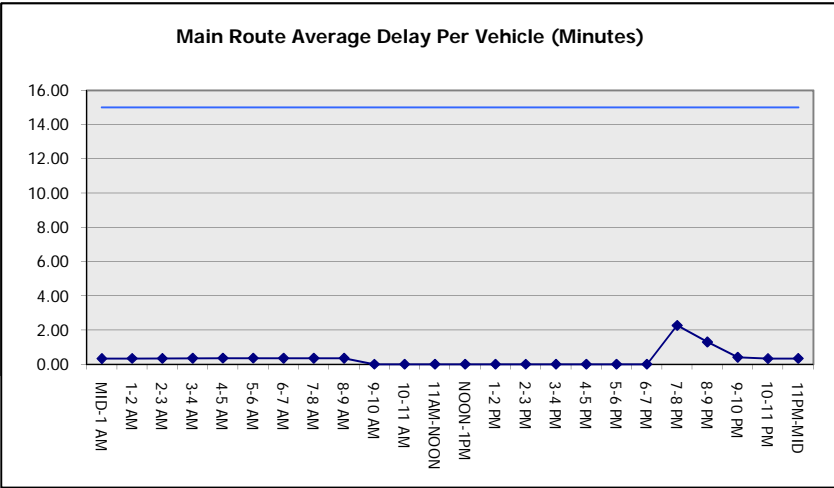
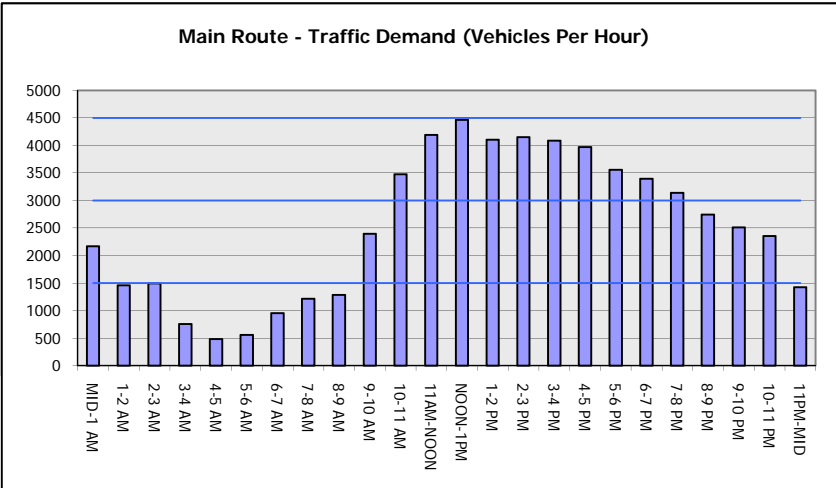
*Delays Exceeding User-Specified Maximum

**IH 94: USH 41 AND IH 43 (MILWAUKEE COUNTY)
NIGHTTIME CLOSURE
NO DIVERSION ROUTE (MAX QUEUE METHOD)**

AUGUST
Analyzed for 2009
Construction Season

GRAPHICAL REPRESENTATION OF TRAFFIC MODEL INPUT AND OUTPUT

SUNDAY WESTBOUND DIRECTION



IH 94: USH 41 AND IH 43 (MILWAUKEE COUNTY) NIGHTTIME CLOSURE NO DIVERSION ROUTE (MAX QUEUE METHOD)	AUGUST
	Analyzed for 2009 Construction Season

SUMMARY OF TRAFFIC MODEL OUTPUT

SUNDAY EASTBOUND DIRECTION

TIME OF DAY	FLOWS AND CAPACITY IN VEH/HR							AVERAGE SPEEDS IN MPH		
	MAIN ROUTE		SITE CAPA CITY	FLOW		AV.DEL PER VEH (MINS)	AVERAGE QUEUE (VEH)	MAIN ROUTE		SITE
	DEMAND FLOW	PCT HEAVY		MAIN ROUTE	'DIVER TED'			WITHOUT WORK ZONE	WITH WORK ZONE	
MID-1 AM	1416	0.0	3000	1416	0	0.34	0	69.0	58.1	49.7
1-2 AM	758	0.0	3000	758	0	0.35	0	69.8	58.3	49.7
2-3 AM	575	0.0	3000	575	0	0.36	0	70.0	58.4	49.7
3-4 AM	507	0.0	3000	507	0	0.36	0	70.1	58.4	49.7
4-5 AM	331	0.0	3000	331	0	0.36	0	70.2	58.5	49.7
5-6 AM	448	0.0	3000	448	0	0.36	0	70.2	58.5	49.7
6-7 AM	739	0.0	3000	739	0	0.35	0	69.8	58.3	49.7
7-8 AM	1048	0.0	3000	1048	0	0.35	0	69.4	58.2	49.7
8-9 AM	1286	0.0	3000	1286	0	0.35	0	69.1	58.1	49.7
9-10 AM	2222	0.0	OFF	2222	0	0.00	0	68.0	68.0	68.0
10-11 AM	2509	0.0	OFF	2509	0	0.00	0	67.6	67.6	67.6
11AM-NOON	2686	0.0	OFF	2686	0	0.00	0	67.4	67.4	67.4
NOON-1PM	2767	0.0	OFF	2767	0	0.00	0	67.3	67.3	67.3
1-2 PM	3503	0.0	OFF	3503	0	0.00	0	66.4	66.4	66.4
2-3 PM	3427	0.0	OFF	3427	0	0.00	0	66.4	66.4	66.4
3-4 PM	3584	0.0	OFF	3584	0	0.00	0	66.3	66.3	66.3
4-5 PM	3710	0.0	OFF	3710	0	0.00	0	65.5	65.5	65.5
5-6 PM	3494	0.0	OFF	3494	0	0.00	0	66.4	66.4	66.4
6-7 PM	3426	0.0	OFF	3426	0	0.00	0	66.4	66.4	66.4
7-8 PM	2959	0.0	2999	2959	0	0.82	7	67.1	46.7	38.2
8-9 PM	2748	0.0	3000	2748	0	0.56	0	67.3	51.7	41.5
9-10 PM	2483	0.0	3000	2483	0	0.39	0	67.6	55.9	47.2
10-11 PM	1680	0.0	3000	1680	0	0.34	0	68.6	57.9	49.7
11PM-MID	994	0.0	3000	994	0	0.35	0	69.5	58.2	49.7

"OFF" INDICATES NO ROAD WORK (ALL LANES OPEN TO TRAFFIC)

----- SITE BREAKDOWN DELAYS -----	
BREAKDOWN DURATION (MINS)	0
RANGE OF QUEUE DELAY - MIN (VEH-H) MAX	0.0
AV BREAKDOWNS PER DAY	0.00
AV QUEUE DELAY/DAY (VEH-H)	0.0
AV TOTAL DELAY/DAY (VEH-H)	0.0

----- SITE ACCIDENT DELAYS -----	
BREAKDOWN DURATION (MINS)	0
RANGE OF QUEUE DELAY - MIN (VEH-H) MAX	0
AV BREAKDOWNS PER DAY	0
AV QUEUE DELAY/DAY (VEH-H)	0
AV TOTAL DELAY/DAY (VEH-H)	0

AVERAGE ACCIDENT NUMBERS (PIA/DAY)	
MAIN ROUTE WITHOUT WORKS	0.0165
MAIN ROUTE WITH WORKS	0.0153
'DIVERSION'	0.0000

PIA: Personal Injury Accidents

ECONOMIC IMPACT ON ROAD USERS	
ROAD USER COSTS PER DAY	\$2,126
CONGESTED HOURS PER DAY*	0

*Delays Exceeding User-Specified Maximum

**IH 94: USH 41 AND IH 43 (MILWAUKEE COUNTY)
NIGHTTIME CLOSURE
NO DIVERSION ROUTE (MAX QUEUE METHOD)**

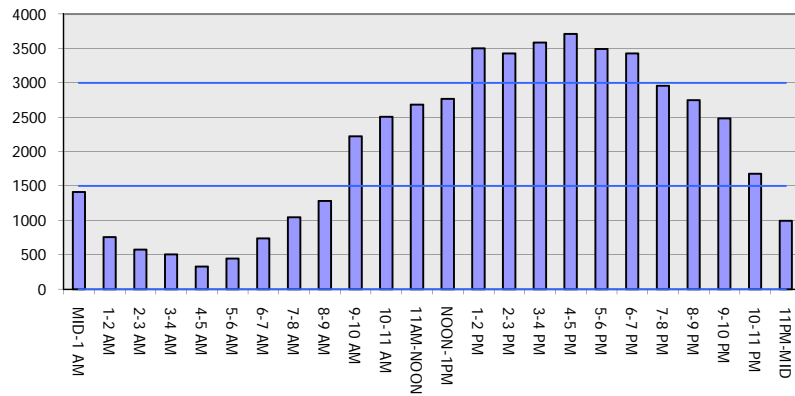
AUGUST

Analyzed for 2009
Construction Season

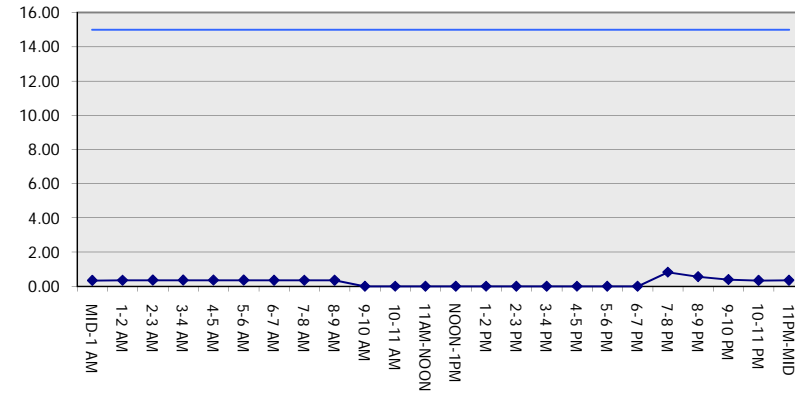
GRAPHICAL REPRESENTATION OF TRAFFIC MODEL INPUT AND OUTPUT

SUNDAY EASTBOUND DIRECTION

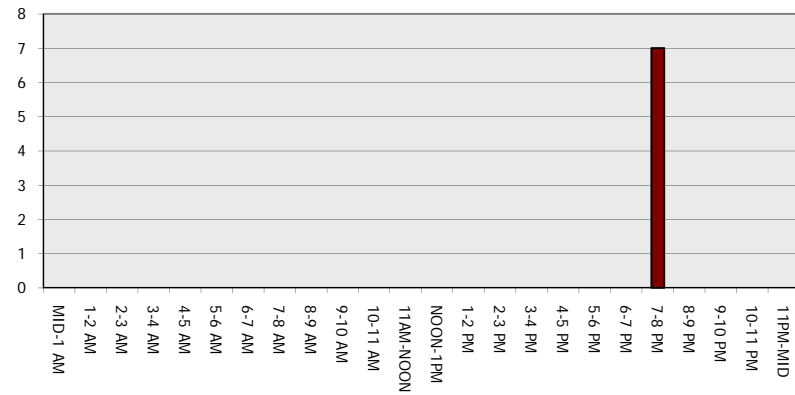
Main Route - Traffic Demand (Vehicles Per Hour)



Main Route Average Delay Per Vehicle (Minutes)



Main Route - Average Queue Length (Vehicles)



Main Route - Average Speed (MPH)

