

IH 94: USH 41 AND IH 43 (MILWAUKEE COUNTY) NIGHTTIME CLOSURE NO DIVERSION ROUTE (MAX QUEUE METHOD)	AUGUST
	Analyzed for 2009 Construction Season

SUMMARY OF TRAFFIC MODEL OUTPUT

SATURDAY WESTBOUND DIRECTION

TIME OF DAY	FLOWS AND CAPACITY IN VEH/HR						AVERAGE SPEEDS IN MPH				
	MAIN ROUTE		SITE CAPA CITY	FLOW		AV.DEL PER VEH (MINS)	AVERAGE QUEUE (VEH)	MAIN ROUTE		SITE	
	DEMAND FLOW	PCT HEAVY		MAIN ROUTE	'DIVER TED'			WITHOUT WORK ZONE	WITH WORK ZONE		
MID-1 AM	2108	0.0	3000	2108	0	0.86	49	68.1	46.6	48.4	
1-2 AM	1286	0.0	3000	1286	0	0.35	0	69.1	58.1	49.7	
2-3 AM	1336	0.0	3000	1336	0	0.35	0	69.1	58.1	49.7	
3-4 AM	789	0.0	3000	789	0	0.35	0	69.7	58.3	49.7	
4-5 AM	662	0.0	3000	662	0	0.36	0	69.9	58.4	49.7	
5-6 AM	1014	0.0	3000	1014	0	0.35	0	69.5	58.2	49.7	
6-7 AM	1593	0.0	3000	1593	0	0.34	0	68.7	57.9	49.7	
7-8 AM	2130	0.0	2999	2130	0	0.33	0	68.1	57.7	49.7	
8-9 AM	2888	0.0	OFF	2888	0	0.00	0	67.1	67.1	67.1	
9-10 AM	3458	0.0	OFF	3458	0	0.00	0	66.4	66.4	66.4	
10-11 AM	4014	0.0	OFF	4014	0	0.00	0	63.4	63.4	63.4	
11AM-NOON	4368	0.0	OFF	4368	0	0.00	0	61.0	61.0	61.0	
NOON-1PM	4622	0.0	OFF	4622	0	0.00	0	59.3	59.3	59.3	
1-2 PM	4496	0.0	OFF	4496	0	0.00	0	60.1	60.1	60.1	
2-3 PM	4600	0.0	OFF	4600	0	0.00	0	59.4	59.4	59.4	
3-4 PM	4638	0.0	OFF	4638	0	0.00	0	59.2	59.2	59.2	
4-5 PM	4418	0.0	OFF	4418	0	0.00	0	60.7	60.7	60.7	
5-6 PM	4131	0.0	OFF	4131	0	0.00	0	62.7	62.7	62.7	
6-7 PM	3380	0.0	2999	3380	0	4.43	227	66.5	20.3	37.3	
7-8 PM	2912	0.0	2999	2912	0	7.04	348	67.1	15.0	37.3	
8-9 PM	2966	0.0	3000	2966	0	6.00	290	67.1	16.3	37.3	
9-10 PM	2409	0.0	3000	2409	0	0.94	52	67.8	45.0	46.9	
10-11 PM	3344	0.0	2999	3344	0	3.09	156	66.6	25.3	37.3	
11PM-MID	2916	0.0	2999	2916	0	6.90	340	67.1	15.2	37.3	

"OFF" INDICATES NO ROAD WORK (ALL LANES OPEN TO TRAFFIC)

----- SITE BREAKDOWN DELAYS -----	
BREAKDOWN DURATION (MINS)	0
RANGE OF QUEUE DELAY - MIN (VEH-H) MAX	0.0
AV BREAKDOWNS PER DAY	0.00
AV QUEUE DELAY/DAY (VEH-H)	0.0
AV TOTAL DELAY/DAY (VEH-H)	0.0

----- SITE ACCIDENT DELAYS -----	
BREAKDOWN DURATION (MINS)	0
RANGE OF QUEUE DELAY - MIN (VEH-H) MAX	0
AV BREAKDOWNS PER DAY	0
AV QUEUE DELAY/DAY (VEH-H)	0
AV TOTAL DELAY/DAY (VEH-H)	0

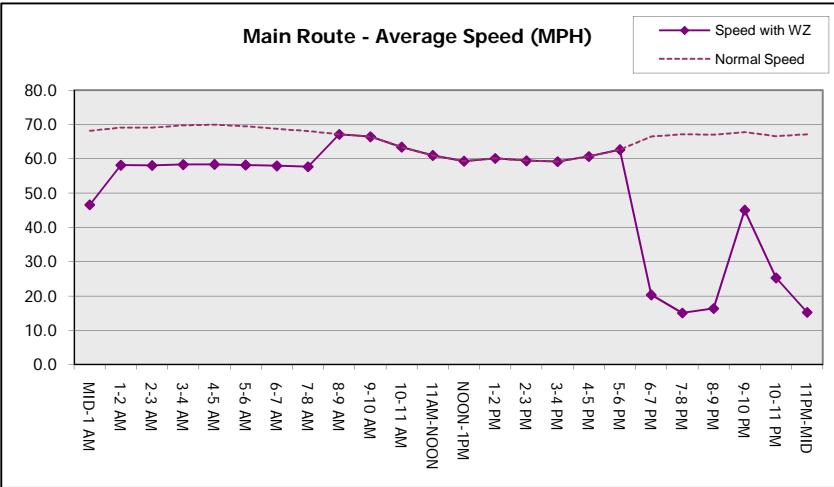
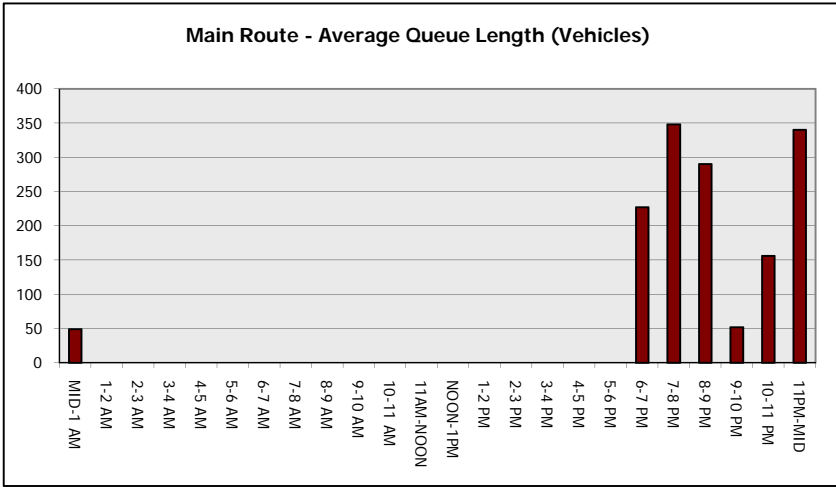
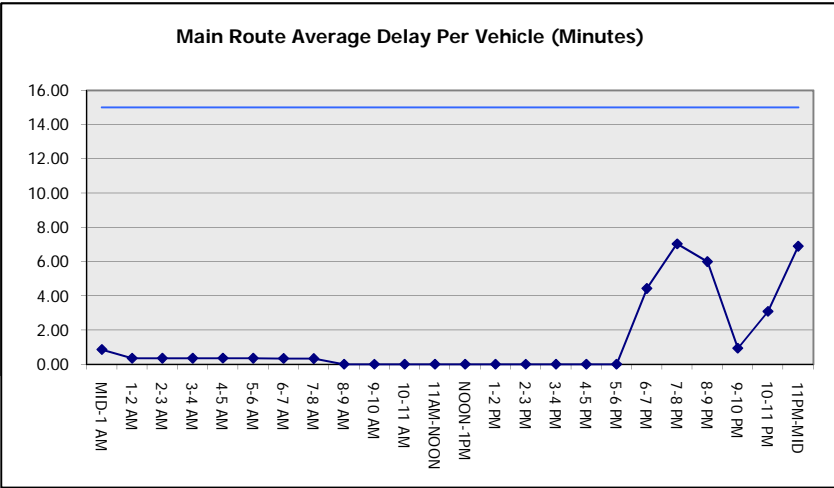
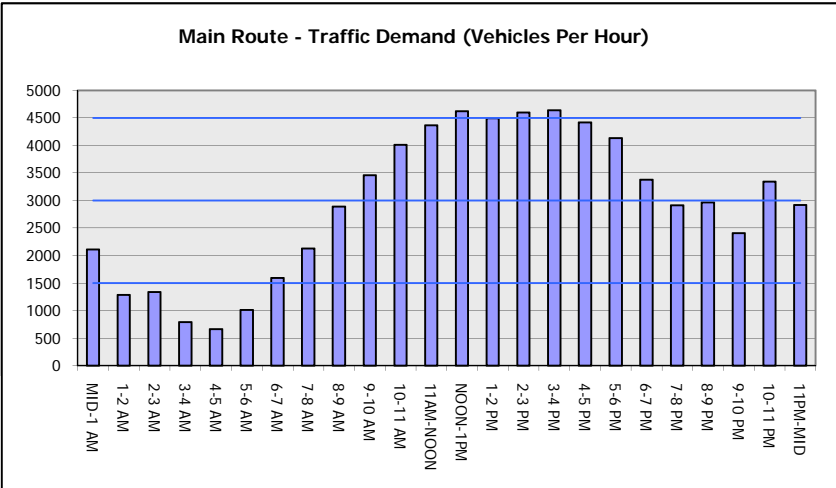
AVERAGE ACCIDENT NUMBERS (PIA/DAY)	
MAIN ROUTE WITHOUT WORKS	0.0236
MAIN ROUTE WITH WORKS	0.0217
'DIVERSION'	0.0000
PIA: Personal Injury Accidents	
IMPACTS ON ROAD USERS	
ROAD USER COSTS PER DAY	\$24,832
CONGESTED HOURS PER DAY*	0

*Delays Exceeding User-Specified Maximum

**IH 94: USH 41 AND IH 43 (MILWAUKEE COUNTY)
NIGHTTIME CLOSURE
NO DIVERSION ROUTE (MAX QUEUE METHOD)**

AUGUST
Analyzed for 2009
Construction Season

GRAPHICAL REPRESENTATION OF TRAFFIC MODEL INPUT AND OUTPUT
SATURDAY WESTBOUND DIRECTION



IH 94: USH 41 AND IH 43 (MILWAUKEE COUNTY) NIGHTTIME CLOSURE NO DIVERSION ROUTE (MAX QUEUE METHOD)	AUGUST
	Analyzed for 2009 Construction Season

SUMMARY OF TRAFFIC MODEL OUTPUT

SATURDAY EASTBOUND DIRECTION

TIME OF DAY	FLOWS AND CAPACITY IN VEH/HR							AVERAGE SPEEDS IN MPH		
	MAIN ROUTE		SITE CAPA CITY	FLOW		AV.DEL PER VEH (MINS)	AVERAGE QUEUE (VEH)	MAIN ROUTE		SITE
	DEMAND FLOW	PCT HEAVY		MAIN ROUTE	'DIVER TED'			WITHOUT WORK ZONE	WITH WORK ZONE	
MID-1 AM	1237	0.0	3000	1237	0	0.35	0	69.2	58.1	49.7
1-2 AM	596	0.0	3000	596	0	0.36	0	70.0	58.4	49.7
2-3 AM	533	0.0	3000	533	0	0.36	0	70.0	58.4	49.7
3-4 AM	383	0.0	3000	383	0	0.36	0	70.2	58.5	49.7
4-5 AM	484	0.0	3000	484	0	0.36	0	70.1	58.4	49.7
5-6 AM	815	0.0	3000	815	0	0.35	0	69.7	58.3	49.7
6-7 AM	1240	0.0	3000	1240	0	0.35	0	69.2	58.1	49.7
7-8 AM	1709	0.0	3000	1709	0	0.34	0	68.6	57.9	49.7
8-9 AM	2067	0.0	OFF	2067	0	0.00	0	68.2	68.2	68.2
9-10 AM	2655	0.0	OFF	2655	0	0.00	0	67.4	67.4	67.4
10-11 AM	2944	0.0	OFF	2944	0	0.00	0	67.1	67.1	67.1
11AM-NOON	3517	0.0	OFF	3517	0	0.00	0	66.4	66.4	66.4
NOON-1PM	3712	0.0	OFF	3712	0	0.00	0	65.5	65.5	65.5
1-2 PM	3692	0.0	OFF	3692	0	0.00	0	65.6	65.6	65.6
2-3 PM	3892	0.0	OFF	3892	0	0.00	0	64.3	64.3	64.3
3-4 PM	3843	0.0	OFF	3843	0	0.00	0	64.6	64.6	64.6
4-5 PM	3744	0.0	OFF	3744	0	0.00	0	65.3	65.3	65.3
5-6 PM	3918	0.0	OFF	3918	0	0.00	0	64.1	64.1	64.1
6-7 PM	3704	0.0	2999	3704	0	6.59	373	65.6	16.4	37.3
7-8 PM	3232	0.0	2999	3172	60	15.88+	837	66.7	10.5	37.3
8-9 PM	2871	0.0	3000	2871	0	15.92+	837	67.2	10.5	37.3
9-10 PM	2402	0.0	2999	2402	0	8.39	459	67.8	14.2	39.3
10-11 PM	2511	0.0	3000	2511	0	0.72	24	67.6	48.7	45.6
11PM-MID	2161	0.0	3000	2161	0	0.33	0	68.1	57.7	49.7

"OFF" INDICATES NO ROAD WORK (ALL LANES OPEN TO TRAFFIC)

+ INDICATES QUEUEING EXCEEDS USER-SPECIFIED MAXIMUM LIMIT

----- SITE BREAKDOWN DELAYS -----	
BREAKDOWN DURATION (MINS)	0
RANGE OF QUEUE DELAY - MIN (VEH-H) MAX	0.0
AV BREAKDOWNS PER DAY	0.00
AV QUEUE DELAY/DAY (VEH-H)	0.0
AV TOTAL DELAY/DAY (VEH-H)	0.0

----- SITE ACCIDENT DELAYS -----	
BREAKDOWN DURATION (MINS)	0
RANGE OF QUEUE DELAY - MIN (VEH-H) MAX	0
AV BREAKDOWNS PER DAY	0
AV QUEUE DELAY/DAY (VEH-H)	0
AV TOTAL DELAY/DAY (VEH-H)	0

AVERAGE ACCIDENT NUMBERS (PIA/DAY)	
MAIN ROUTE WITHOUT WORKS	0.0193
MAIN ROUTE WITH WORKS	0.0177
'DIVERSION'	0.0000

PIA: Personal Injury Accidents

ECONOMIC IMPACT ON ROAD USERS	
ROAD USER COSTS PER DAY	\$40,069
CONGESTED HOURS PER DAY*	2

*Delays Exceeding User-Specified Maximum

**IH 94: USH 41 AND IH 43 (MILWAUKEE COUNTY)
NIGHTTIME CLOSURE
NO DIVERSION ROUTE (MAX QUEUE METHOD)**

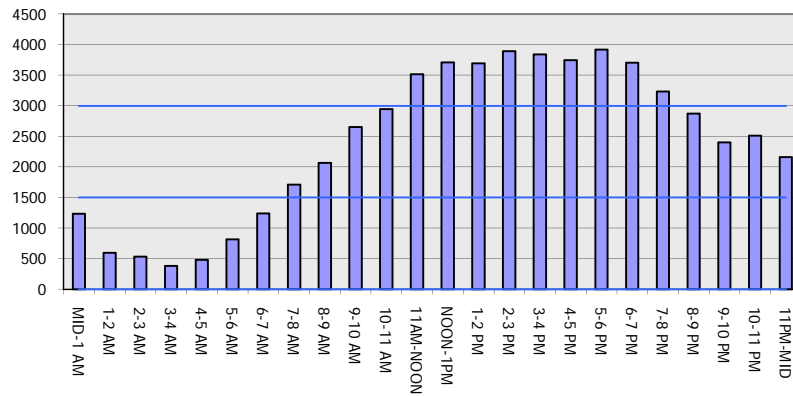
AUGUST

Analyzed for 2009
Construction Season

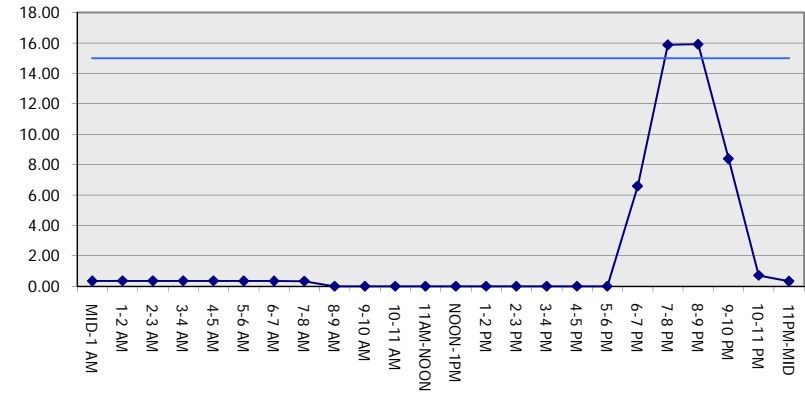
GRAPHICAL REPRESENTATION OF TRAFFIC MODEL INPUT AND OUTPUT

SATURDAY EASTBOUND DIRECTION

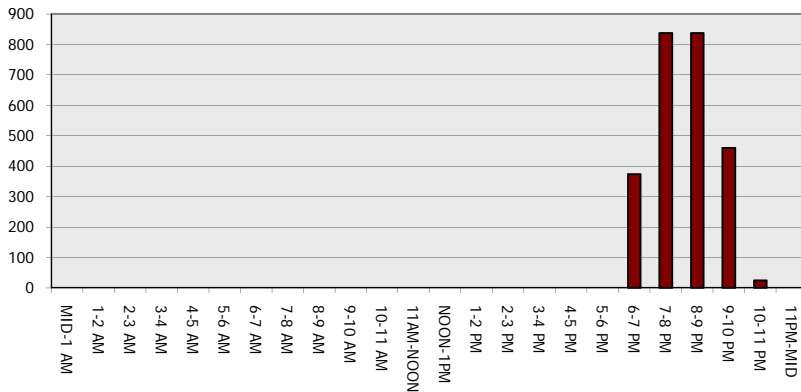
Main Route - Traffic Demand (Vehicles Per Hour)



Main Route Average Delay Per Vehicle (Minutes)



Main Route - Average Queue Length (Vehicles)



Main Route - Average Speed (MPH)

