

<b>IH 94: USH 41 AND IH 43 (MILWAUKEE COUNTY)                  NIGHTTIME CLOSURE                  NO DIVERSION ROUTE (MAX QUEUE METHOD)</b>	<b>AUGUST</b>
	Analyzed for 2009 Construction Season

**SUMMARY OF TRAFFIC MODEL OUTPUT**

MON-THUR                      WESTBOUND DIRECTION

TIME OF DAY	FLOWS AND CAPACITY IN VEH/HR						AVERAGE SPEEDS IN MPH			
	MAIN ROUTE		SITE CAPA CITY	FLOW		AV.DEL PER VEH (MINS)	AVERAGE QUEUE (VEH)	MAIN ROUTE		SITE
	DEMAND FLOW	PCT HEAVY		MAIN ROUTE	'DIVER TED'			WITHOUT WORK ZONE	WITH WORK ZONE	
MID-1 AM	909	0.0	3000	909	0	0.35	0	69.6	58.2	49.7
1-2 AM	634	0.0	3000	634	0	0.36	0	69.9	58.4	49.7
2-3 AM	480	0.0	3000	480	0	0.36	0	70.1	58.4	49.7
3-4 AM	423	0.0	3000	423	0	0.36	0	70.2	58.5	49.7
4-5 AM	750	0.0	3000	750	0	0.35	0	69.8	58.3	49.7
5-6 AM	2083	0.0	OFF	2083	0	0.00	0	68.1	68.1	68.1
6-7 AM	4309	0.0	OFF	4309	0	0.00	0	61.4	61.4	61.4
7-8 AM	5349	0.0	OFF	5349	0	0.00	0	54.3	54.3	54.3
8-9 AM	4711	0.0	OFF	4711	0	0.00	0	58.7	58.7	58.7
9-10 AM	4031	0.0	OFF	4031	0	0.00	0	63.3	63.3	63.3
10-11 AM	4097	0.0	OFF	4097	0	0.00	0	62.8	62.8	62.8
11AM-NOON	4654	0.0	OFF	4654	0	0.00	0	59.1	59.1	59.1
NOON-1PM	4699	0.0	OFF	4699	0	0.00	0	58.7	58.7	58.7
1-2 PM	4778	0.0	OFF	4778	0	0.00	0	58.2	58.2	58.2
2-3 PM	5437	0.0	OFF	5437	0	0.00	0	53.7	53.7	53.7
3-4 PM	5186	0.0	OFF	5186	0	0.00	0	55.5	55.5	55.5
4-5 PM	5290	0.0	OFF	5290	0	0.00	0	54.7	54.7	54.7
5-6 PM	5228	0.0	OFF	5228	0	0.00	0	55.1	55.1	55.1
6-7 PM	4855	0.0	OFF	4855	0	0.00	0	57.7	57.7	57.7
7-8 PM	3199	0.0	2999	3199	0	3.61	167	66.8	22.9	37.3
8-9 PM	2688	0.0	2999	2688	0	1.58	78	67.4	36.5	40.9
9-10 PM	2580	0.0	3000	2580	0	0.45	0	67.5	54.3	45.0
10-11 PM	1948	0.0	3000	1948	0	0.34	0	68.3	57.8	49.7
11PM-MID	1442	0.0	3000	1442	0	0.34	0	68.9	58.0	49.7

"OFF" INDICATES NO ROAD WORK (ALL LANES OPEN TO TRAFFIC)

*----- SITE BREAKDOWN DELAYS -----*	
BREAKDOWN DURATION (MINS)	0
RANGE OF QUEUE DELAY - MIN (VEH-H) MAX	0.0
AV BREAKDOWNS PER DAY	0.00
AV QUEUE DELAY/DAY (VEH-H)	0.0
AV TOTAL DELAY/DAY (VEH-H)	0.0

*----- SITE ACCIDENT DELAYS -----*	
BREAKDOWN DURATION (MINS)	0
RANGE OF QUEUE DELAY - MIN (VEH-H) MAX	0
AV BREAKDOWNS PER DAY	0
AV QUEUE DELAY/DAY (VEH-H)	0
AV TOTAL DELAY/DAY (VEH-H)	0

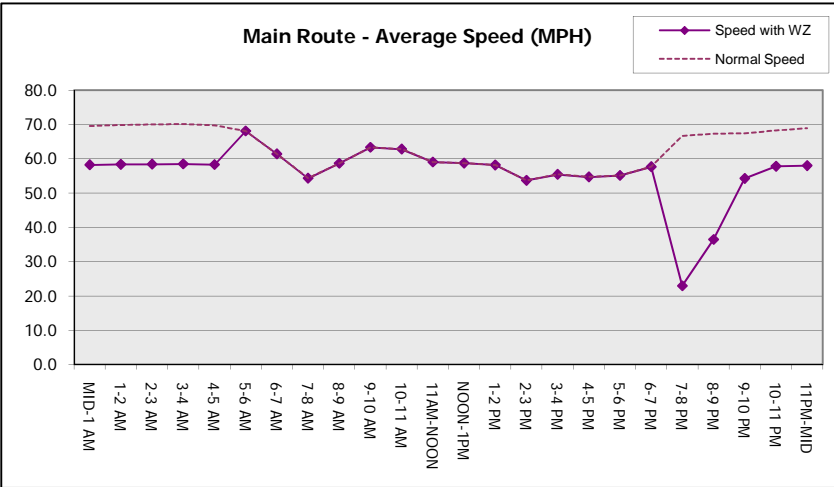
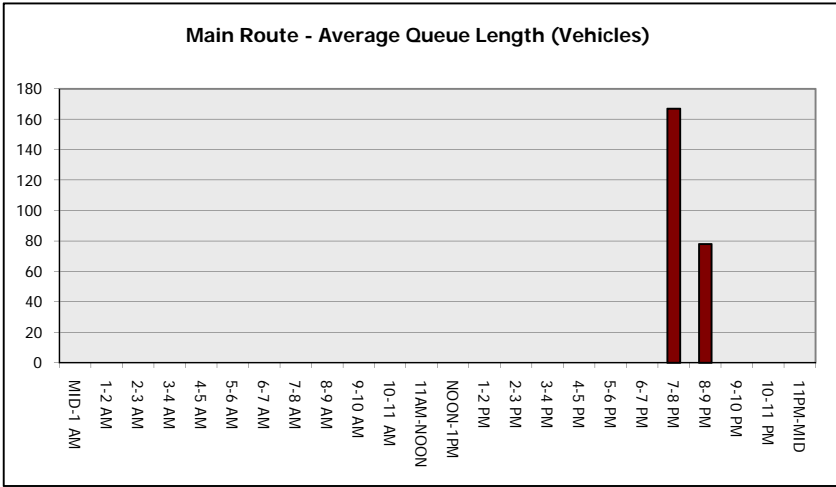
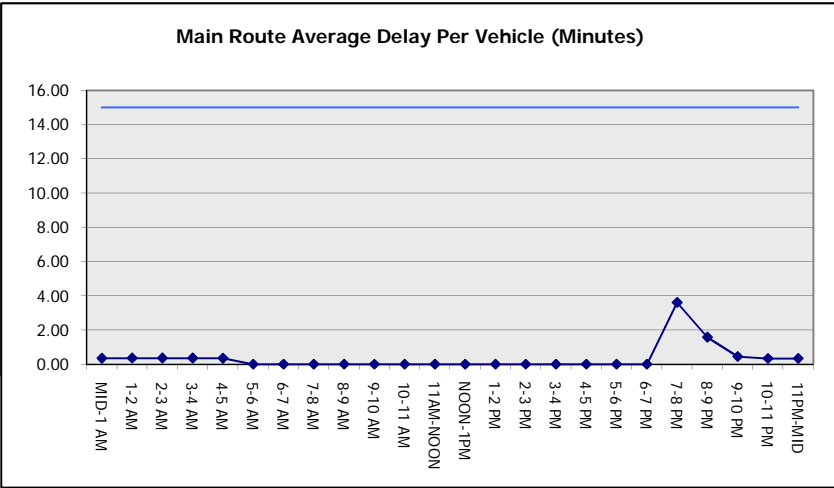
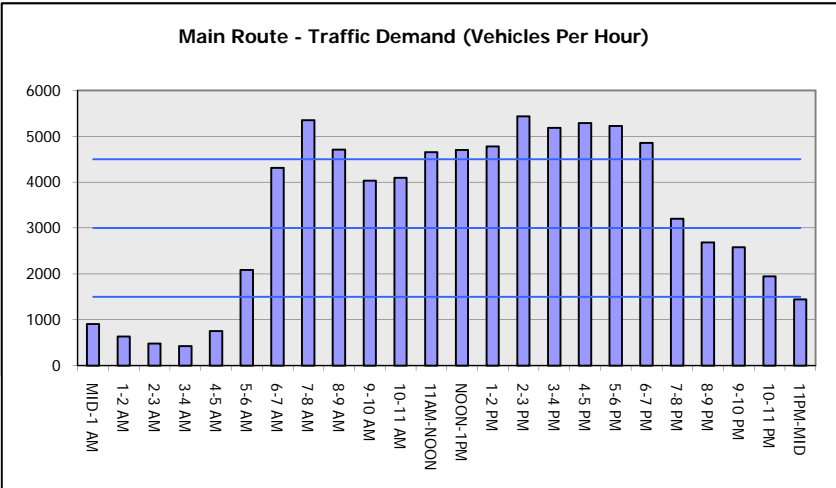
AVERAGE ACCIDENT NUMBERS (PIA/DAY)	
MAIN ROUTE WITHOUT WORKS	0.0267
MAIN ROUTE WITH WORKS	0.0257
'DIVERSION'	0.0000
PIA: Personal Injury Accidents	
IMPACTS ON ROAD USERS	
ROAD USER COSTS PER DAY	\$4,412
CONGESTED HOURS PER DAY*	0

\*Delays Exceeding User-Specified Maximum

**IH 94: USH 41 AND IH 43 (MILWAUKEE COUNTY)  
NIGHTTIME CLOSURE  
NO DIVERSION ROUTE (MAX QUEUE METHOD)**

**AUGUST**  
Analyzed for 2009  
Construction Season

**GRAPHICAL REPRESENTATION OF TRAFFIC MODEL INPUT AND OUTPUT**  
**MON-THUR WESTBOUND DIRECTION**



<b>IH 94: USH 41 AND IH 43 (MILWAUKEE COUNTY)                  NIGHTTIME CLOSURE                  NO DIVERSION ROUTE (MAX QUEUE METHOD)</b>	<b>AUGUST</b>
	Analyzed for 2009 Construction Season

**SUMMARY OF TRAFFIC MODEL OUTPUT**

MON-THUR                      EASTBOUND DIRECTION

TIME OF DAY	FLOWS AND CAPACITY IN VEH/HR						AVERAGE SPEEDS IN MPH			
	MAIN ROUTE		SITE CAPA CITY	FLOW		AV.DEL PER VEH (MINS)	AVERAGE QUEUE (VEH)	MAIN ROUTE		SITE
	DEMAND FLOW	PCT HEAVY		MAIN ROUTE	'DIVER TED'			WITHOUT WORK ZONE	WITH WORK ZONE	
MID-1 AM	675	0.0	3000	675	0	0.36	0	69.9	58.4	49.7
1-2 AM	388	0.0	3000	388	0	0.36	0	70.2	58.5	49.7
2-3 AM	300	0.0	3000	300	0	0.36	0	70.2	58.5	49.7
3-4 AM	328	0.0	3000	328	0	0.36	0	70.2	58.5	49.7
4-5 AM	582	0.0	3000	582	0	0.36	0	70.0	58.4	49.7
5-6 AM	2080	0.0	OFF	2080	0	0.00	0	68.1	68.1	68.1
6-7 AM	4187	0.0	OFF	4187	0	0.00	0	62.2	62.2	62.2
7-8 AM	4506	0.0	OFF	4506	0	0.00	0	60.1	60.1	60.1
8-9 AM	4356	0.0	OFF	4356	0	0.00	0	61.1	61.1	61.1
9-10 AM	3648	0.0	OFF	3648	0	0.00	0	66.0	66.0	66.0
10-11 AM	3278	0.0	OFF	3278	0	0.00	0	66.6	66.6	66.6
11AM-NOON	3471	0.0	OFF	3471	0	0.00	0	66.4	66.4	66.4
NOON-1PM	3341	0.0	OFF	3341	0	0.00	0	66.6	66.6	66.6
1-2 PM	3505	0.0	OFF	3505	0	0.00	0	66.4	66.4	66.4
2-3 PM	3741	0.0	OFF	3741	0	0.00	0	65.3	65.3	65.3
3-4 PM	3650	0.0	OFF	3650	0	0.00	0	66.0	66.0	66.0
4-5 PM	4043	0.0	OFF	4043	0	0.00	0	63.2	63.2	63.2
5-6 PM	4113	0.0	OFF	4113	0	0.00	0	62.8	62.8	62.8
6-7 PM	3430	0.0	OFF	3430	0	0.00	0	66.4	66.4	66.4
7-8 PM	2794	0.0	3000	2794	0	0.59	0	67.3	51.0	40.7
8-9 PM	2164	0.0	3000	2164	0	0.33	0	68.1	57.7	49.7
9-10 PM	2361	0.0	3000	2361	0	0.33	0	67.8	57.6	49.7
10-11 PM	1752	0.0	3000	1752	0	0.34	0	68.6	57.9	49.7
11PM-MID	1096	0.0	3000	1096	0	0.35	0	69.4	58.2	49.7

**"OFF" INDICATES NO ROAD WORK (ALL LANES OPEN TO TRAFFIC)**

*----- SITE BREAKDOWN DELAYS -----*	
BREAKDOWN DURATION (MINS)	0
RANGE OF QUEUE DELAY - MIN (VEH-H) MAX	0.0
AV BREAKDOWNS PER DAY	0.00
AV QUEUE DELAY/DAY (VEH-H)	0.0
AV TOTAL DELAY/DAY (VEH-H)	0.0

*----- SITE ACCIDENT DELAYS -----*	
BREAKDOWN DURATION (MINS)	0
RANGE OF QUEUE DELAY - MIN (VEH-H) MAX	0
AV BREAKDOWNS PER DAY	0
AV QUEUE DELAY/DAY (VEH-H)	0
AV TOTAL DELAY/DAY (VEH-H)	0

AVERAGE ACCIDENT NUMBERS (PIA/DAY)	
MAIN ROUTE WITHOUT WORKS	0.0213
MAIN ROUTE WITH WORKS	0.0205
'DIVERSION'	0.0000

PIA: Personal Injury Accidents

ECONOMIC IMPACT ON ROAD USERS	
ROAD USER COSTS PER DAY	\$1,132
CONGESTED HOURS PER DAY*	0

\*Delays Exceeding User-Specified Maximum

**IH 94: USH 41 AND IH 43 (MILWAUKEE COUNTY)  
NIGHTTIME CLOSURE  
NO DIVERSION ROUTE (MAX QUEUE METHOD)**

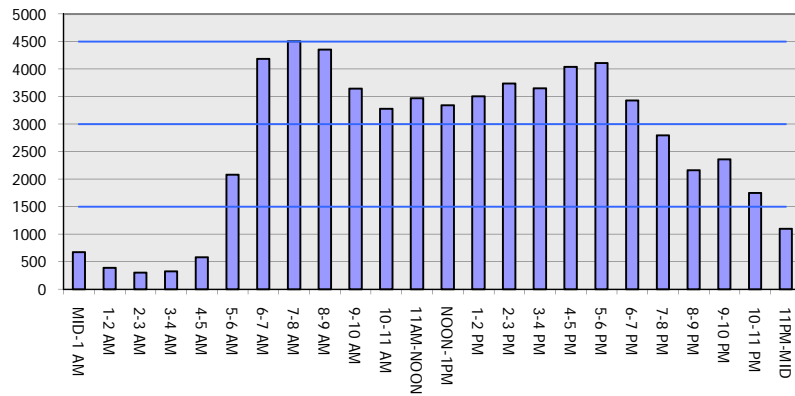
**AUGUST**

Analyzed for 2009  
Construction Season

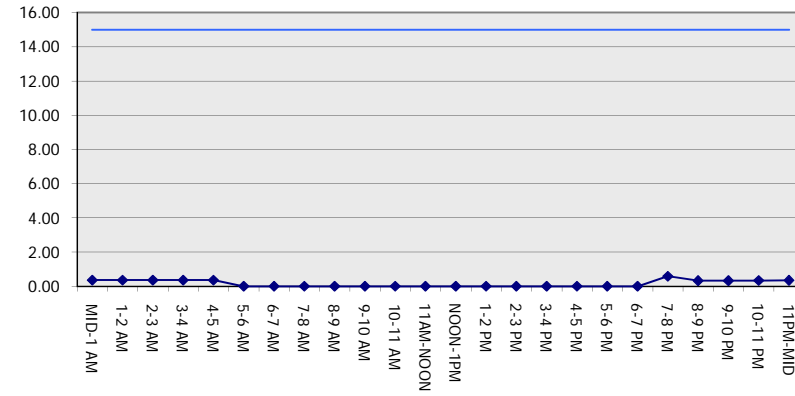
**GRAPHICAL REPRESENTATION OF TRAFFIC MODEL INPUT AND OUTPUT**

**MON-THUR EASTBOUND DIRECTION**

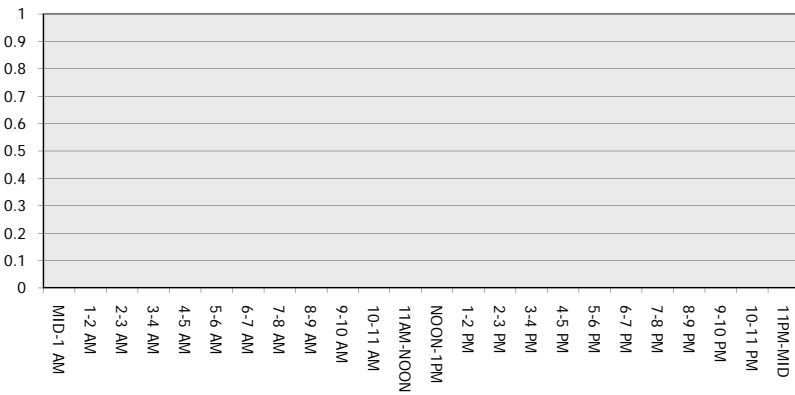
**Main Route - Traffic Demand (Vehicles Per Hour)**



**Main Route Average Delay Per Vehicle (Minutes)**



**Main Route - Average Queue Length (Vehicles)**



**Main Route - Average Speed (MPH)**

