

IH 94: USH 41 AND IH 43 (MILWAUKEE COUNTY) NIGHTTIME 2 LANE CLOSURE NO DIVERSION ROUTE (MAX QUEUE METHOD)	AUGUST
	Analyzed for 2009 Construction Season

SUMMARY OF TRAFFIC MODEL OUTPUT

FRIDAY WESTBOUND DIRECTION

TIME OF DAY	FLOWS AND CAPACITY IN VEH/HR						AVERAGE SPEEDS IN MPH				
	MAIN ROUTE		SITE CAPA CITY	FLOW		AV.DEL PER VEH (MINS)	AVERAGE QUEUE (VEH)	MAIN ROUTE		SITE	
	DEMAND FLOW	PCT HEAVY		MAIN ROUTE	'DIVER TED'			WITHOUT WORK ZONE	WITH WORK ZONE		
MID-1 AM	913	0.0	1499	913	0	3.76	180	69.6	22.9	37.0	
1-2 AM	704	0.0	1500	704	0	0.55	0	69.9	53.4	42.7	
2-3 AM	559	0.0	1500	559	0	0.54	0	70.0	53.9	43.3	
3-4 AM	389	0.0	1500	389	0	0.52	0	70.2	54.4	43.9	
4-5 AM	805	0.0	1500	805	0	0.57	0	69.7	53.1	42.4	
5-6 AM	2033	0.0	OFF	2033	0	0.00	0	68.2	68.2	68.2	
6-7 AM	4123	0.0	OFF	4123	0	0.00	0	62.7	62.7	62.7	
7-8 AM	5469	0.0	OFF	5469	0	0.00	0	53.5	53.5	53.5	
8-9 AM	4764	0.0	OFF	4764	0	0.00	0	58.3	58.3	58.3	
9-10 AM	4237	0.0	OFF	4237	0	0.00	0	61.9	61.9	61.9	
10-11 AM	4398	0.0	OFF	4398	0	0.00	0	60.8	60.8	60.8	
11AM-NOON	4806	0.0	OFF	4806	0	0.00	0	58.0	58.0	58.0	
NOON-1PM	4999	0.0	OFF	4999	0	0.00	0	56.7	56.7	56.7	
1-2 PM	5100	0.0	OFF	5100	0	0.00	0	56.0	56.0	56.0	
2-3 PM	5512	0.0	OFF	5512	0	0.00	0	53.2	53.2	53.2	
3-4 PM	5442	0.0	OFF	5442	0	0.00	0	53.7	53.7	53.7	
4-5 PM	5279	0.0	OFF	5279	0	0.00	0	54.8	54.8	54.8	
5-6 PM	4680	0.0	OFF	4680	0	0.00	0	58.9	58.9	58.9	
6-7 PM	4456	0.0	OFF	4456	0	0.00	0	60.4	60.4	60.4	
7-8 PM	3472	0.0	1499	1571	1901	17.10+	428	66.4	7.6	36.6	
8-9 PM	2978	0.0	1499	1655	1323	14.83+	388	67.0	8.4	35.6	
9-10 PM	3067	0.0	1499	1655	1412	16.47+	405	66.9	7.7	30.8	
10-11 PM	3044	0.0	1500	1515	1529	16.90+	415	66.9	7.6	30.8	
11PM-MID	2369	0.0	1500	1503	866	16.77+	411	67.8	7.6	30.8	

"OFF" INDICATES NO ROAD WORK (ALL LANES OPEN TO TRAFFIC)

+ INDICATES QUEUEING EXCEEDS USER-SPECIFIED MAXIMUM LIMIT

----- SITE BREAKDOWN DELAYS -----	
BREAKDOWN DURATION (MINS)	0
RANGE OF QUEUE DELAY - MIN (VEH-H) MAX	0.0
AV BREAKDOWNS PER DAY	0.00
AV QUEUE DELAY/DAY (VEH-H)	0.0
AV TOTAL DELAY/DAY (VEH-H)	0.0

----- SITE ACCIDENT DELAYS -----	
BREAKDOWN DURATION (MINS)	0
RANGE OF QUEUE DELAY - MIN (VEH-H) MAX	0
AV BREAKDOWNS PER DAY	0
AV QUEUE DELAY/DAY (VEH-H)	0
AV TOTAL DELAY/DAY (VEH-H)	0

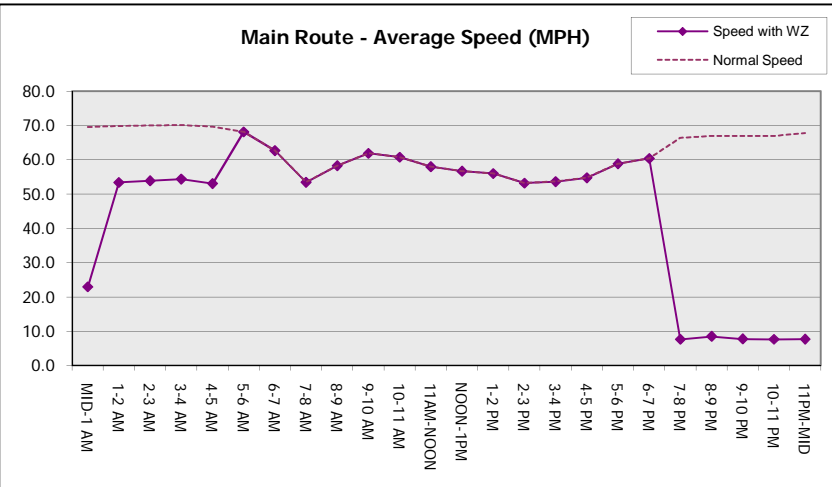
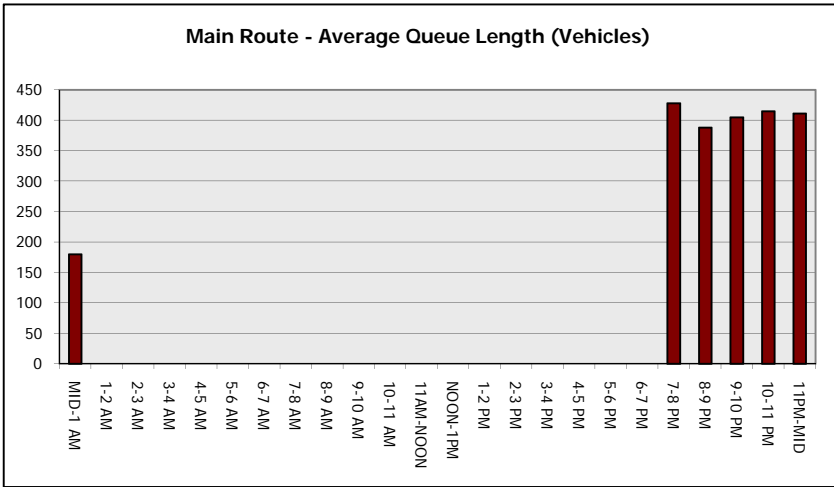
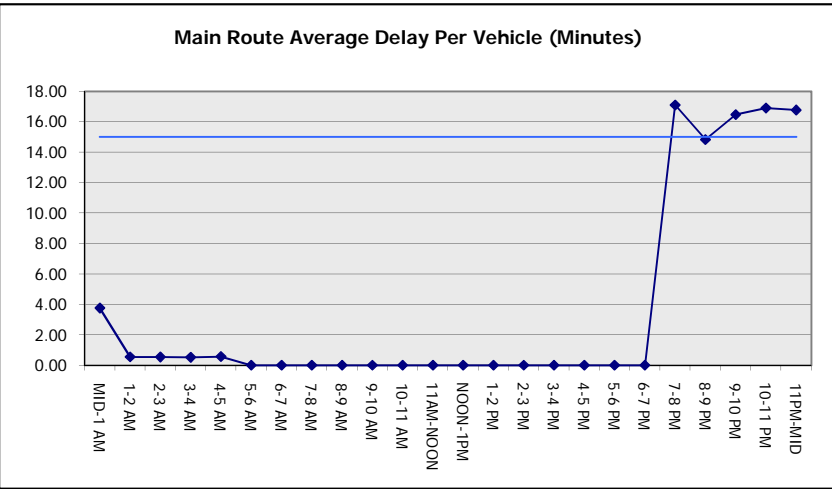
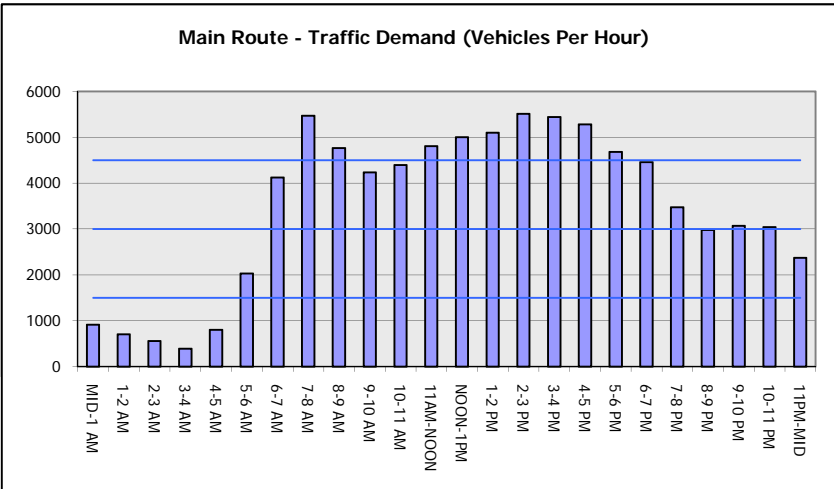
AVERAGE ACCIDENT NUMBERS (PIA/DAY)	
MAIN ROUTE WITHOUT WORKS	0.0279
MAIN ROUTE WITH WORKS	0.0248
'DIVERSION'	0.0054
<small>PIA: Personal Injury Accidents</small>	
IMPACTS ON ROAD USERS	
ROAD USER COSTS PER DAY	\$59,261
CONGESTED HOURS PER DAY*	5

*Delays Exceeding User-Specified Maximum

**IH 94: USH 41 AND IH 43 (MILWAUKEE COUNTY)
NIGHTTIME 2 LANE CLOSURE
NO DIVERSION ROUTE (MAX QUEUE METHOD)**

AUGUST
Analyzed for 2009
Construction Season

GRAPHICAL REPRESENTATION OF TRAFFIC MODEL INPUT AND OUTPUT
FRIDAY WESTBOUND DIRECTION



IH 94: USH 41 AND IH 43 (MILWAUKEE COUNTY) NIGHTTIME 2 LANE CLOSURE NO DIVERSION ROUTE (MAX QUEUE METHOD)	AUGUST
	Analyzed for 2009 Construction Season

SUMMARY OF TRAFFIC MODEL OUTPUT

FRIDAY EASTBOUND DIRECTION

TIME OF DAY	FLOWS AND CAPACITY IN VEH/HR						AVERAGE SPEEDS IN MPH			
	MAIN ROUTE		SITE CAPA CITY	FLOW		AV.DEL PER VEH (MINS)	AVERAGE QUEUE (VEH)	MAIN ROUTE		SITE
	DEMAND FLOW	PCT HEAVY		MAIN ROUTE	'DIVER TED'			WITHOUT WORK ZONE	WITH WORK ZONE	
MID-1 AM	379	0.0	1500	379	0	1.63	92	70.2	36.9	43.5
1-2 AM	244	0.0	1500	244	0	0.50	0	70.2	54.8	44.5
2-3 AM	205	0.0	1500	205	0	0.50	0	70.2	55.0	44.6
3-4 AM	308	0.0	1500	308	0	0.51	0	70.2	54.6	44.3
4-5 AM	601	0.0	1500	601	0	0.54	0	70.0	53.7	43.1
5-6 AM	1947	0.0	OFF	1947	0	0.00	0	68.3	68.3	68.3
6-7 AM	4016	0.0	OFF	4016	0	0.00	0	63.4	63.4	63.4
7-8 AM	4612	0.0	OFF	4612	0	0.00	0	59.4	59.4	59.4
8-9 AM	4227	0.0	OFF	4227	0	0.00	0	62.0	62.0	62.0
9-10 AM	3546	0.0	OFF	3546	0	0.00	0	66.3	66.3	66.3
10-11 AM	3427	0.0	OFF	3427	0	0.00	0	66.4	66.4	66.4
11AM-NOON	3682	0.0	OFF	3682	0	0.00	0	65.7	65.7	65.7
NOON-1PM	3695	0.0	OFF	3695	0	0.00	0	65.6	65.6	65.6
1-2 PM	3926	0.0	OFF	3926	0	0.00	0	64.0	64.0	64.0
2-3 PM	3963	0.0	OFF	3963	0	0.00	0	63.8	63.8	63.8
3-4 PM	3960	0.0	OFF	3960	0	0.00	0	63.8	63.8	63.8
4-5 PM	3997	0.0	OFF	3997	0	0.00	0	63.5	63.5	63.5
5-6 PM	3865	0.0	OFF	3865	0	0.00	0	64.5	64.5	64.5
6-7 PM	3816	0.0	OFF	3816	0	0.00	0	64.8	64.8	64.8
7-8 PM	3392	0.0	1499	1571	1821	17.10+	428	66.5	7.6	36.6
8-9 PM	2886	0.0	1499	1642	1244	14.81+	388	67.1	8.4	35.7
9-10 PM	3028	0.0	1499	1693	1335	16.36+	402	66.9	7.8	30.8
10-11 PM	2785	0.0	1500	1503	1282	16.82+	412	67.3	7.6	30.8
11PM-MID	1970	0.0	1500	1500	470	16.76+	410	68.3	7.6	30.8

"OFF" INDICATES NO ROAD WORK (ALL LANES OPEN TO TRAFFIC)

+ INDICATES QUEUEING EXCEEDS USER-SPECIFIED MAXIMUM LIMIT

----- SITE BREAKDOWN DELAYS -----	
BREAKDOWN DURATION (MINS)	0
RANGE OF QUEUE DELAY - MIN (VEH-H) MAX	0.0
AV BREAKDOWNS PER DAY	0.00
AV QUEUE DELAY/DAY (VEH-H)	0.0
AV TOTAL DELAY/DAY (VEH-H)	0.0

----- SITE ACCIDENT DELAYS -----	
BREAKDOWN DURATION (MINS)	0
RANGE OF QUEUE DELAY - MIN (VEH-H) MAX	0
AV BREAKDOWNS PER DAY	0
AV QUEUE DELAY/DAY (VEH-H)	0
AV TOTAL DELAY/DAY (VEH-H)	0

AVERAGE ACCIDENT NUMBERS (PIA/DAY)	
MAIN ROUTE WITHOUT WORKS	0.0229
MAIN ROUTE WITH WORKS	0.0202
'DIVERSION'	0.0048

PIA: Personal Injury Accidents

ECONOMIC IMPACT ON ROAD USERS	
ROAD USER COSTS PER DAY	\$54,867
CONGESTED HOURS PER DAY*	5

*Delays Exceeding User-Specified Maximum

**IH 94: USH 41 AND IH 43 (MILWAUKEE COUNTY)
NIGHTTIME 2 LANE CLOSURE
NO DIVERSION ROUTE (MAX QUEUE METHOD)**

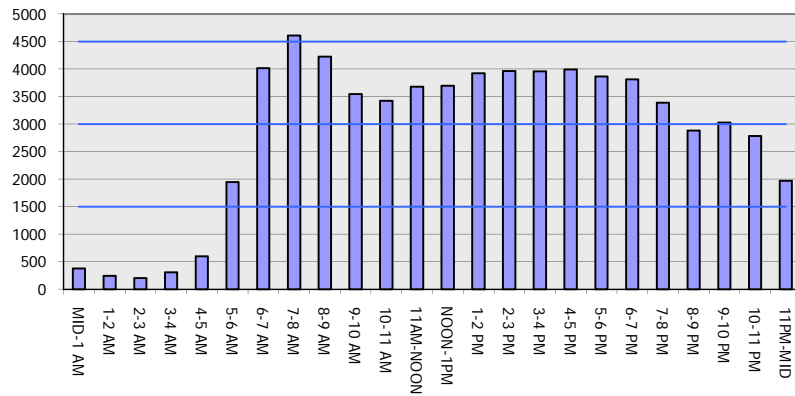
AUGUST

Analyzed for 2009
Construction Season

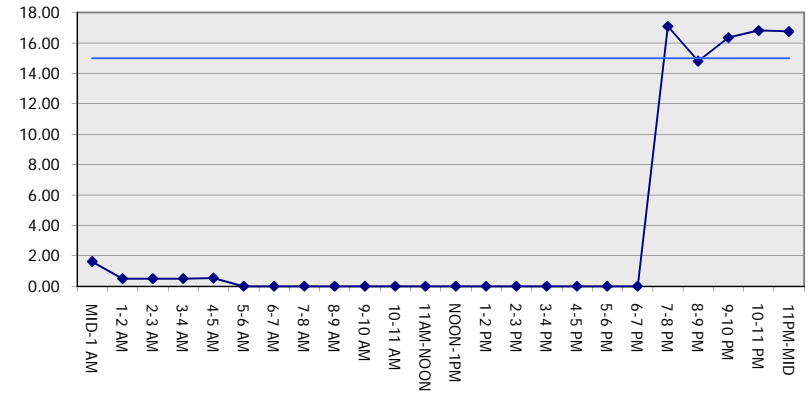
GRAPHICAL REPRESENTATION OF TRAFFIC MODEL INPUT AND OUTPUT

FRIDAY EASTBOUND DIRECTION

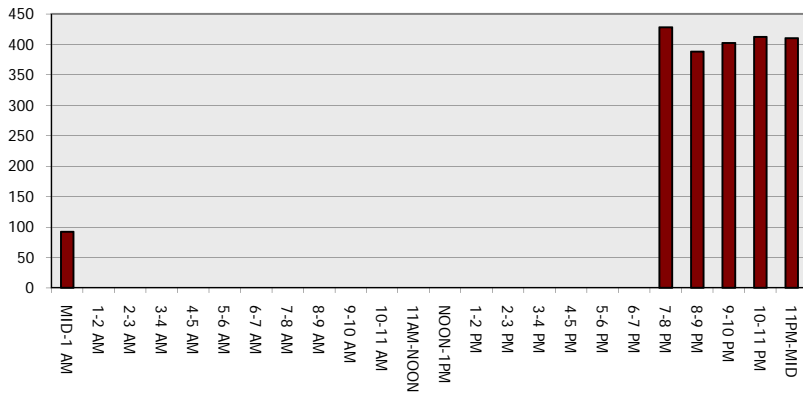
Main Route - Traffic Demand (Vehicles Per Hour)



Main Route Average Delay Per Vehicle (Minutes)



Main Route - Average Queue Length (Vehicles)



Main Route - Average Speed (MPH)

