

IH 94: USH 41 AND IH 43 (MILWAUKEE COUNTY) NIGHTTIME CLOSURE NO DIVERSION ROUTE (MAX QUEUE METHOD)	MAY
	Analyzed for 2009 Construction Season

SUMMARY OF TRAFFIC MODEL OUTPUT

FRIDAY WESTBOUND DIRECTION

TIME OF DAY	FLOWS AND CAPACITY IN VEH/HR						AVERAGE SPEEDS IN MPH			
	MAIN ROUTE		SITE CAPA CITY	FLOW		AV.DEL PER VEH (MINS)	AVERAGE QUEUE (VEH)	MAIN ROUTE		SITE
	DEMAND FLOW	PCT HEAVY		MAIN ROUTE	'DIVER TED'			WITHOUT WORK ZONE	WITH WORK ZONE	
MID-1 AM	980	0.0	3000	980	0	0.35	0	69.5	58.2	49.7
1-2 AM	758	0.0	3000	758	0	0.35	0	69.8	58.3	49.7
2-3 AM	581	0.0	3000	581	0	0.36	0	70.0	58.4	49.7
3-4 AM	794	0.0	3000	794	0	0.35	0	69.7	58.3	49.7
4-5 AM	1925	0.0	2999	1925	0	0.34	0	68.3	57.8	49.7
5-6 AM	4070	0.0	OFF	4070	0	0.00	0	63.0	63.0	63.0
6-7 AM	5657	0.0	OFF	5657	0	0.00	0	52.2	52.2	52.2
7-8 AM	5276	0.0	OFF	5276	0	0.00	0	54.8	54.8	54.8
8-9 AM	4433	0.0	OFF	4433	0	0.00	0	60.5	60.5	60.5
9-10 AM	4372	0.0	OFF	4372	0	0.00	0	61.0	61.0	61.0
10-11 AM	4830	0.0	OFF	4830	0	0.00	0	57.9	57.9	57.9
11AM-NOON	5259	0.0	OFF	5259	0	0.00	0	55.0	55.0	55.0
NOON-1PM	5441	0.0	OFF	5441	0	0.00	0	53.7	53.7	53.7
1-2 PM	5825	0.0	OFF	5825	0	0.00	0	51.0	51.0	51.0
2-3 PM	5594	0.0	OFF	5594	0	0.00	0	52.7	52.7	52.7
3-4 PM	5745	0.0	OFF	5745	0	0.00	0	51.6	51.6	51.6
4-5 PM	5626	0.0	OFF	5626	0	0.00	0	52.4	52.4	52.4
5-6 PM	5183	0.0	OFF	5183	0	0.00	0	55.5	55.5	55.5
6-7 PM	3973	0.0	OFF	3973	0	0.00	0	63.7	63.7	63.7
7-8 PM	3221	0.0	2999	3221	0	3.03	138	66.8	25.6	37.3
8-9 PM	3087	0.0	3000	3087	0	5.57	268	66.9	17.1	37.3
9-10 PM	3095	0.0	3000	3095	0	7.42	370	66.9	14.7	37.3
10-11 PM	2605	0.0	2999	2605	0	4.39	240	67.5	20.6	39.9
11PM-MID	1978	0.0	3000	1978	0	0.34	0	68.2	57.8	49.7

"OFF" INDICATES NO ROAD WORK (ALL LANES OPEN TO TRAFFIC)

----- SITE BREAKDOWN DELAYS -----	
BREAKDOWN DURATION (MINS)	0
RANGE OF QUEUE DELAY - MIN (VEH-H) MAX	0.0
AV BREAKDOWNS PER DAY	0.00
AV QUEUE DELAY/DAY (VEH-H)	0.0
AV TOTAL DELAY/DAY (VEH-H)	0.0

----- SITE ACCIDENT DELAYS -----	
BREAKDOWN DURATION (MINS)	0
RANGE OF QUEUE DELAY - MIN (VEH-H) MAX	0
AV BREAKDOWNS PER DAY	0
AV QUEUE DELAY/DAY (VEH-H)	0
AV TOTAL DELAY/DAY (VEH-H)	0

AVERAGE ACCIDENT NUMBERS (PIA/DAY)	
MAIN ROUTE WITHOUT WORKS	0.0302
MAIN ROUTE WITH WORKS	0.0289
'DIVERSION'	0.0000
PIA: Personal Injury Accidents	
IMPACTS ON ROAD USERS	
ROAD USER COSTS PER DAY	\$15,920
CONGESTED HOURS PER DAY*	0

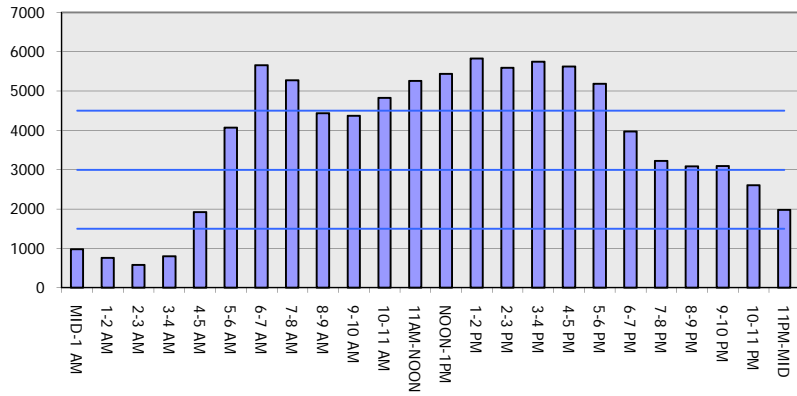
*Delays Exceeding User-Specified Maximum

**IH 94: USH 41 AND IH 43 (MILWAUKEE COUNTY)
NIGHTTIME CLOSURE
NO DIVERSION ROUTE (MAX QUEUE METHOD)**

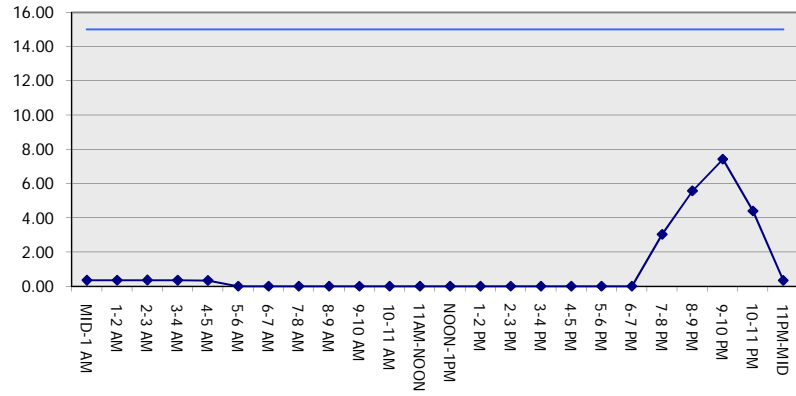
MAY
Analyzed for 2009
Construction Season

GRAPHICAL REPRESENTATION OF TRAFFIC MODEL INPUT AND OUTPUT
FRIDAY WESTBOUND DIRECTION

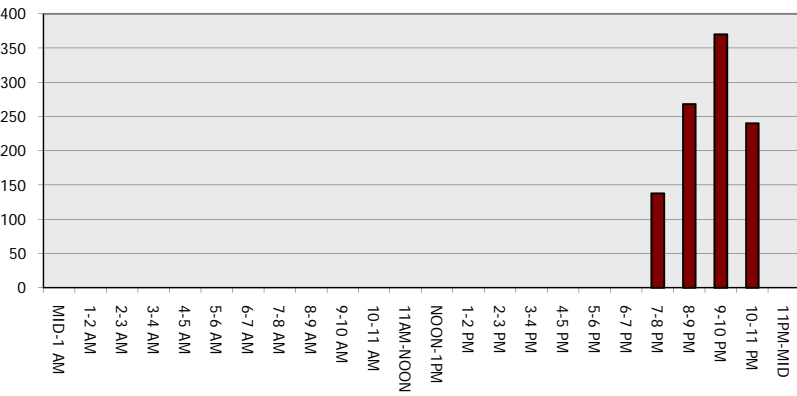
Main Route - Traffic Demand (Vehicles Per Hour)



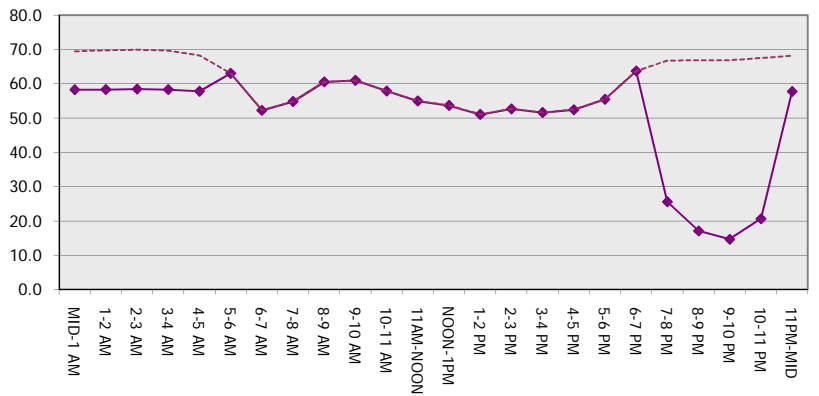
Main Route Average Delay Per Vehicle (Minutes)



Main Route - Average Queue Length (Vehicles)



Main Route - Average Speed (MPH)



IH 94: USH 41 AND IH 43 (MILWAUKEE COUNTY) NIGHTTIME CLOSURE NO DIVERSION ROUTE (MAX QUEUE METHOD)	MAY
	Analyzed for 2009 Construction Season

SUMMARY OF TRAFFIC MODEL OUTPUT

FRIDAY EASTBOUND DIRECTION

TIME OF DAY	FLOWS AND CAPACITY IN VEH/HR						AVERAGE SPEEDS IN MPH			
	MAIN ROUTE		SITE CAPA CITY	FLOW		AV.DEL PER VEH (MINS)	AVERAGE QUEUE (VEH)	MAIN ROUTE		SITE
	DEMAND FLOW	PCT HEAVY		MAIN ROUTE	'DIVER TED'			WITHOUT WORK ZONE	WITH WORK ZONE	
MID-1 AM	704	0.0	3000	704	0	0.36	0	69.9	58.4	49.7
1-2 AM	536	0.0	3000	536	0	0.36	0	70.0	58.4	49.7
2-3 AM	566	0.0	3000	566	0	0.36	0	70.0	58.4	49.7
3-4 AM	708	0.0	3000	708	0	0.36	0	69.9	58.4	49.7
4-5 AM	1852	0.0	2999	1852	0	0.34	0	68.4	57.8	49.7
5-6 AM	4061	0.0	OFF	4061	0	0.00	0	63.1	63.1	63.1
6-7 AM	5101	0.0	OFF	5101	0	0.00	0	56.0	56.0	56.0
7-8 AM	4765	0.0	OFF	4765	0	0.00	0	58.3	58.3	58.3
8-9 AM	4243	0.0	OFF	4243	0	0.00	0	61.9	61.9	61.9
9-10 AM	3909	0.0	OFF	3909	0	0.00	0	64.1	64.1	64.1
10-11 AM	3930	0.0	OFF	3930	0	0.00	0	64.0	64.0	64.0
11AM-NOON	3999	0.0	OFF	3999	0	0.00	0	63.5	63.5	63.5
NOON-1PM	4085	0.0	OFF	4085	0	0.00	0	63.0	63.0	63.0
1-2 PM	4237	0.0	OFF	4237	0	0.00	0	61.9	61.9	61.9
2-3 PM	4397	0.0	OFF	4397	0	0.00	0	60.8	60.8	60.8
3-4 PM	4347	0.0	OFF	4347	0	0.00	0	61.2	61.2	61.2
4-5 PM	4486	0.0	OFF	4486	0	0.00	0	60.2	60.2	60.2
5-6 PM	4097	0.0	OFF	4097	0	0.00	0	62.8	62.8	62.8
6-7 PM	3677	0.0	OFF	3677	0	0.00	0	65.8	65.8	65.8
7-8 PM	3081	0.0	2999	3081	0	1.73	57	66.9	34.8	37.3
8-9 PM	3124	0.0	3000	3124	0	3.17	138	66.9	24.9	37.3
9-10 PM	3220	0.0	3000	3220	0	6.76	338	66.8	15.5	37.3
10-11 PM	2362	0.0	2999	2362	0	2.37	186	67.8	30.2	43.8
11PM-MID	1493	0.0	3000	1493	0	0.34	0	68.9	58.0	49.7

"OFF" INDICATES NO ROAD WORK (ALL LANES OPEN TO TRAFFIC)

----- SITE BREAKDOWN DELAYS -----	
BREAKDOWN DURATION (MINS)	0
RANGE OF QUEUE DELAY - MIN (VEH-H) MAX	0.0
AV BREAKDOWNS PER DAY	0.00
AV QUEUE DELAY/DAY (VEH-H)	0.0
AV TOTAL DELAY/DAY (VEH-H)	0.0

----- SITE ACCIDENT DELAYS -----	
BREAKDOWN DURATION (MINS)	0
RANGE OF QUEUE DELAY - MIN (VEH-H) MAX	0
AV BREAKDOWNS PER DAY	0
AV QUEUE DELAY/DAY (VEH-H)	0
AV TOTAL DELAY/DAY (VEH-H)	0

AVERAGE ACCIDENT NUMBERS (PIA/DAY)	
MAIN ROUTE WITHOUT WORKS	0.0257
MAIN ROUTE WITH WORKS	0.0246
'DIVERSION'	0.0000

PIA: Personal Injury Accidents

ECONOMIC IMPACT ON ROAD USERS	
ROAD USER COSTS PER DAY	\$11,143
CONGESTED HOURS PER DAY*	0

*Delays Exceeding User-Specified Maximum

**IH 94: USH 41 AND IH 43 (MILWAUKEE COUNTY)
NIGHTTIME CLOSURE
NO DIVERSION ROUTE (MAX QUEUE METHOD)**

MAY
Analyzed for 2009
Construction Season

**GRAPHICAL REPRESENTATION OF TRAFFIC MODEL INPUT AND OUTPUT
FRIDAY EASTBOUND DIRECTION**

