

**USH 45: STH 145 TO CTH E (MILWAUKEE COUNTY)
NIGHTTIME 2 LANE CLOSURE
NO DIVERSION ROUTE (MAX QUEUE METHOD)**

OCTOBER
Analyzed for 2009
Construction Season

SUMMARY OF TRAFFIC MODEL OUTPUT
SUNDAY SOUTHBOUND DIRECTION

TIME OF DAY	FLOWS AND CAPACITY IN VEH/HR							AVERAGE SPEEDS IN MPH			
	MAIN ROUTE		SITE CAPA CITY	FLOW		AV.DEL PER VEH (MINS)	AVERAGE QUEUE (VEH)	MAIN ROUTE		SITE	
	DEMAND FLOW	PCT HEAVY		MAIN ROUTE	'DIVER TED'			WITHOUT WORK ZONE	WITH WORK ZONE		
MID-1 AM	595	0.0	1500	595	0	0.54	0	70.0	54.8	43.2	
1-2 AM	350	0.0	1500	350	0	0.52	0	70.2	55.6	44.1	
2-3 AM	270	0.0	1500	270	0	0.51	0	70.2	55.8	44.4	
3-4 AM	187	0.0	1500	187	0	0.50	0	70.2	56.1	44.7	
4-5 AM	200	0.0	1500	200	0	0.50	0	70.2	56.0	44.7	
5-6 AM	322	0.0	1500	322	0	0.51	0	70.2	55.6	44.2	
6-7 AM	617	0.0	1500	617	0	0.55	0	70.0	54.8	43.0	
7-8 AM	832	0.0	1500	832	0	0.57	0	69.7	54.2	42.3	
8-9 AM	1154	0.0	1499	1154	0	0.70	0	69.3	51.3	38.8	
9-10 AM	1902	0.0	OFF	1902	0	0.00	0	68.4	68.4	68.4	
10-11 AM	2374	0.0	OFF	2374	0	0.00	0	67.8	67.8	67.8	
11AM-NOON	2767	0.0	OFF	2767	0	0.00	0	67.3	67.3	67.3	
NOON-1PM	3185	0.0	OFF	3185	0	0.00	0	66.8	66.8	66.8	
1-2 PM	3335	0.0	OFF	3335	0	0.00	0	66.6	66.6	66.6	
2-3 PM	3203	0.0	OFF	3203	0	0.00	0	66.8	66.8	66.8	
3-4 PM	3404	0.0	OFF	3404	0	0.00	0	66.5	66.5	66.5	
4-5 PM	3288	0.0	OFF	3288	0	0.00	0	66.6	66.6	66.6	
5-6 PM	3046	0.0	OFF	3046	0	0.00	0	66.9	66.9	66.9	
6-7 PM	2834	0.0	OFF	2834	0	0.00	0	67.2	67.2	67.2	
7-8 PM	2249	0.0	1499	1954	296	12.52+	317	67.9	9.8	30.8	
8-9 PM	1551	0.0	1499	1399	152	15.82+	385	68.8	8.2	30.8	
9-10 PM	1111	0.0	1499	1111	0	5.46	184	69.4	18.5	35.3	
10-11 PM	748	0.0	1500	748	0	0.56	0	69.8	54.4	42.6	
11PM-MID	509	0.0	1500	509	0	0.53	0	70.1	55.1	43.5	

"OFF" INDICATES NO ROAD WORK (ALL LANES OPEN TO TRAFFIC)

+ INDICATES QUEUEING EXCEEDS USER-SPECIFIED MAXIMUM LIMIT

----- SITE BREAKDOWN DELAYS -----	
BREAKDOWN DURATION (MINS)	0
RANGE OF QUEUE DELAY - MIN (VEH-H) MAX	0.0
AV BREAKDOWNS PER DAY	0.00
AV QUEUE DELAY/DAY (VEH-H)	0.0
AV TOTAL DELAY/DAY (VEH-H)	0.0

----- SITE ACCIDENT DELAYS -----	
BREAKDOWN DURATION (MINS)	0
RANGE OF QUEUE DELAY - MIN (VEH-H) MAX	0
AV BREAKDOWNS PER DAY	0
AV QUEUE DELAY/DAY (VEH-H)	0
AV TOTAL DELAY/DAY (VEH-H)	0

AVERAGE ACCIDENT NUMBERS (PIA/DAY)	
MAIN ROUTE WITHOUT WORKS	0.0146
MAIN ROUTE WITH WORKS	0.0138
'DIVERSION'	0.0004
PIA: Personal Injury Accidents	
IMPACTS ON ROAD USERS	
ROAD USER COSTS PER DAY	\$17,427
CONGESTED HOURS PER DAY*	2

*Delays Exceeding User-Specified Maximum

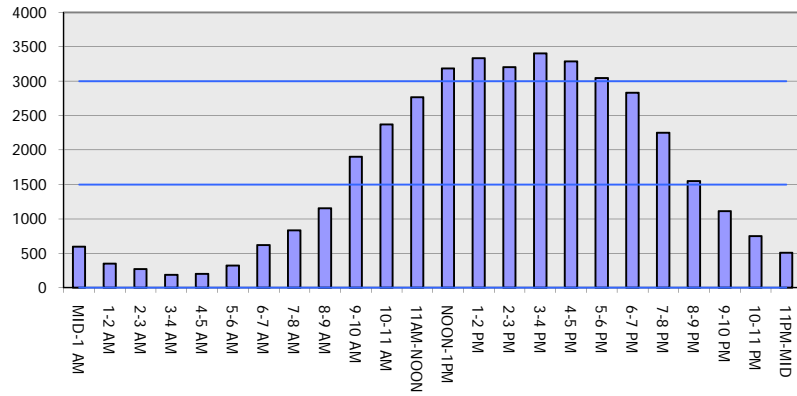
USH 45: STH 145 TO CTH E (MILWAUKEE COUNTY)
NIGHTTIME 2 LANE CLOSURE
NO DIVERSION ROUTE (MAX QUEUE METHOD)

OCTOBER

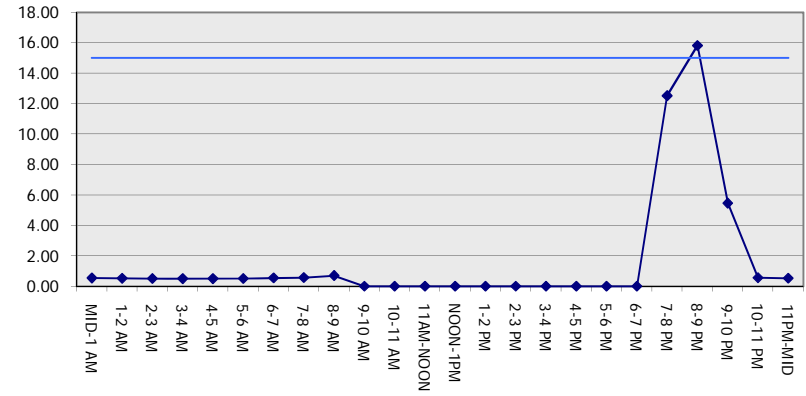
Analyzed for 2009
 Construction Season

GRAPHICAL REPRESENTATION OF TRAFFIC MODEL INPUT AND OUTPUT
SUNDAY SOUTHBOUND DIRECTION

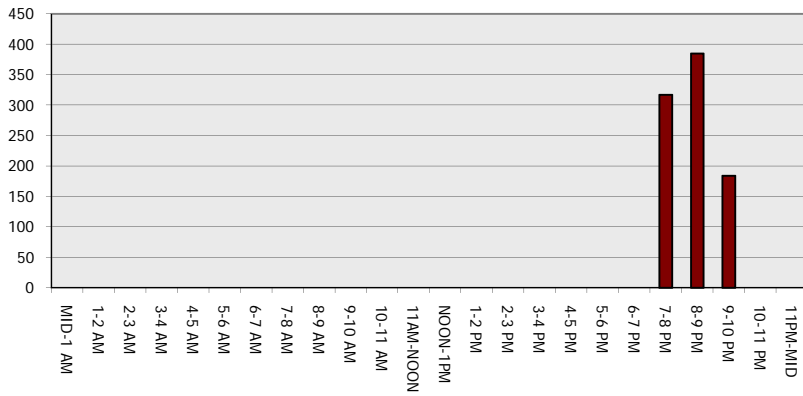
Main Route - Traffic Demand (Vehicles Per Hour)



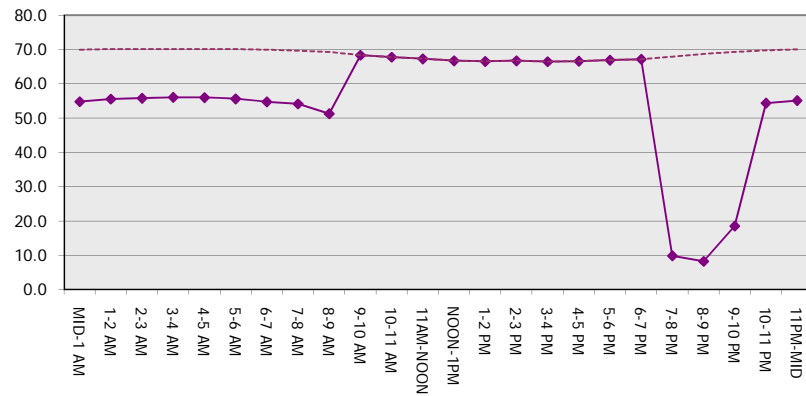
Main Route Average Delay Per Vehicle (Minutes)



Main Route - Average Queue Length (Vehicles)



Main Route - Average Speed (MPH)



USH 45: STH 145 TO CTH E (MILWAUKEE COUNTY) NIGHTTIME 2 LANE CLOSURE NO DIVERSION ROUTE (MAX QUEUE METHOD)	OCTOBER
	Analyzed for 2009 Construction Season

SUMMARY OF TRAFFIC MODEL OUTPUT

SUNDAY NORTHBOUND DIRECTION

TIME OF DAY	FLOWS AND CAPACITY IN VEH/HR						AVERAGE SPEEDS IN MPH			
	MAIN ROUTE		SITE CAPA CITY	FLOW		AV.DEL PER VEH (MINS)	AVERAGE QUEUE (VEH)	MAIN ROUTE		SITE
	DEMAND FLOW	PCT HEAVY		MAIN ROUTE	'DIVER TED'			WITHOUT WORK ZONE	WITH WORK ZONE	
MID-1 AM	783	0.0	1500	783	0	0.56	0	69.7	54.3	42.5
1-2 AM	452	0.0	1500	452	0	0.53	0	70.2	55.3	43.7
2-3 AM	404	0.0	1500	404	0	0.52	0	70.2	55.5	43.9
3-4 AM	258	0.0	1500	258	0	0.50	0	70.2	55.8	44.5
4-5 AM	207	0.0	1500	207	0	0.50	0	70.2	56.0	44.6
5-6 AM	360	0.0	1500	360	0	0.52	0	70.2	55.6	44.0
6-7 AM	558	0.0	1500	558	0	0.54	0	70.0	55.0	43.3
7-8 AM	908	0.0	1500	908	0	0.58	0	69.6	53.9	42.0
8-9 AM	1291	0.0	1499	1291	0	0.82	0	69.1	49.0	36.0
9-10 AM	1773	0.0	OFF	1773	0	0.00	0	68.6	68.6	68.6
10-11 AM	2273	0.0	OFF	2273	0	0.00	0	67.9	67.9	67.9
11AM-NOON	2665	0.0	OFF	2665	0	0.00	0	67.4	67.4	67.4
NOON-1PM	2986	0.0	OFF	2986	0	0.00	0	67.0	67.0	67.0
1-2 PM	2893	0.0	OFF	2893	0	0.00	0	67.1	67.1	67.1
2-3 PM	2817	0.0	OFF	2817	0	0.00	0	67.3	67.3	67.3
3-4 PM	3048	0.0	OFF	3048	0	0.00	0	66.9	66.9	66.9
4-5 PM	2894	0.0	OFF	2894	0	0.00	0	67.1	67.1	67.1
5-6 PM	2636	0.0	OFF	2636	0	0.00	0	67.4	67.4	67.4
6-7 PM	2239	0.0	OFF	2239	0	0.00	0	67.9	67.9	67.9
7-8 PM	1856	0.0	1499	1856	0	7.84	204	68.4	14.0	30.8
8-9 PM	1376	0.0	1499	1376	0	13.12	317	69.0	9.3	30.8
9-10 PM	1102	0.0	1499	1102	0	2.15	75	69.4	33.3	37.9
10-11 PM	1017	0.0	1500	1017	0	0.59	0	69.5	53.6	41.6
11PM-MID	609	0.0	1500	609	0	0.54	0	70.0	54.8	43.1

"OFF" INDICATES NO ROAD WORK (ALL LANES OPEN TO TRAFFIC)

----- SITE BREAKDOWN DELAYS -----	
BREAKDOWN DURATION (MINS)	0
RANGE OF QUEUE DELAY - MIN (VEH-H) MAX	0.0
AV BREAKDOWNS PER DAY	0.00
AV QUEUE DELAY/DAY (VEH-H)	0.0
AV TOTAL DELAY/DAY (VEH-H)	0.0

----- SITE ACCIDENT DELAYS -----	
BREAKDOWN DURATION (MINS)	0
RANGE OF QUEUE DELAY - MIN (VEH-H) MAX	0
AV BREAKDOWNS PER DAY	0
AV QUEUE DELAY/DAY (VEH-H)	0
AV TOTAL DELAY/DAY (VEH-H)	0

AVERAGE ACCIDENT NUMBERS (PIA/DAY)	
MAIN ROUTE WITHOUT WORKS	0.0137
MAIN ROUTE WITH WORKS	0.0129
'DIVERSION'	0.0000

PIA: Personal Injury Accidents

ECONOMIC IMPACT ON ROAD USERS	
ROAD USER COSTS PER DAY	\$10,977
CONGESTED HOURS PER DAY*	0

*Delays Exceeding User-Specified Maximum

**USH 45: STH 145 TO CTH E (MILWAUKEE COUNTY)
NIGHTTIME 2 LANE CLOSURE
NO DIVERSION ROUTE (MAX QUEUE METHOD)**

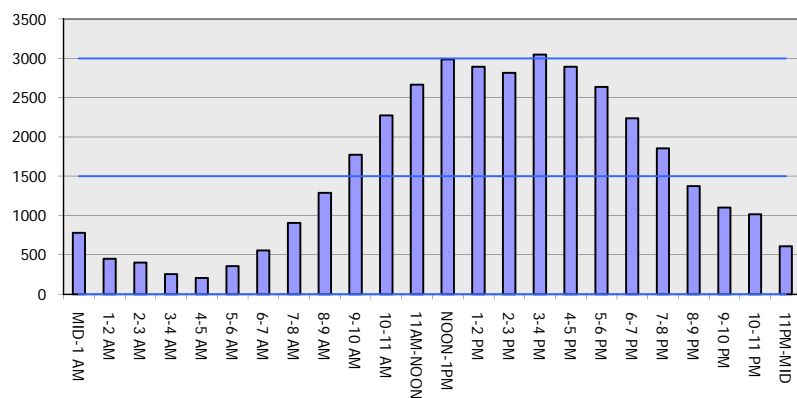
OCTOBER

Analyzed for 2009
Construction Season

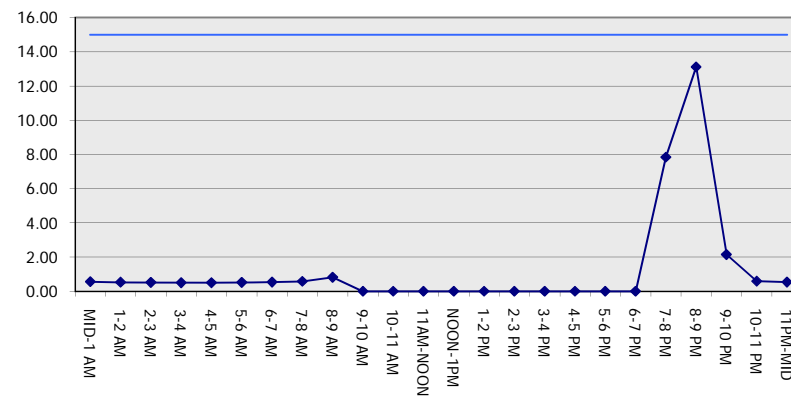
GRAPHICAL REPRESENTATION OF TRAFFIC MODEL INPUT AND OUTPUT

SUNDAY NORTHBOUND DIRECTION

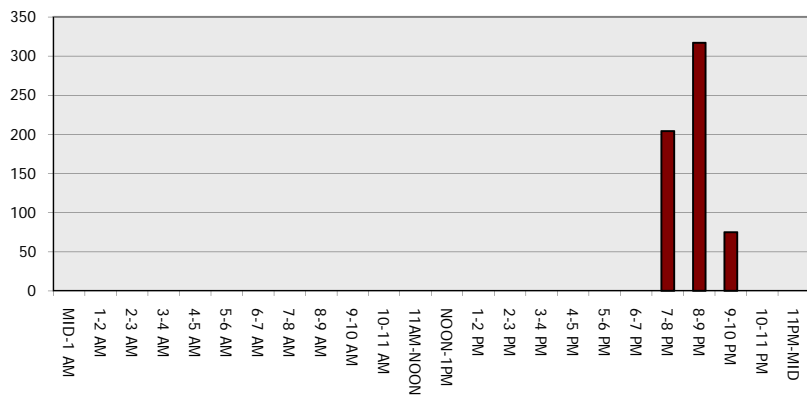
Main Route - Traffic Demand (Vehicles Per Hour)



Main Route Average Delay Per Vehicle (Minutes)



Main Route - Average Queue Length (Vehicles)



Main Route - Average Speed (MPH)

